



IRON WORKS SYNTHETIC TURF FIELD

SCALE: 1"=50'

**IRON WORKS PARK
TURF FIELD
CONCEPT PLAN
TOWNSHIP OF MOUNT HOLLY
BURLINGTON COUNTY, NEW JERSEY 08060**

REVISIONS	
REV	DATE

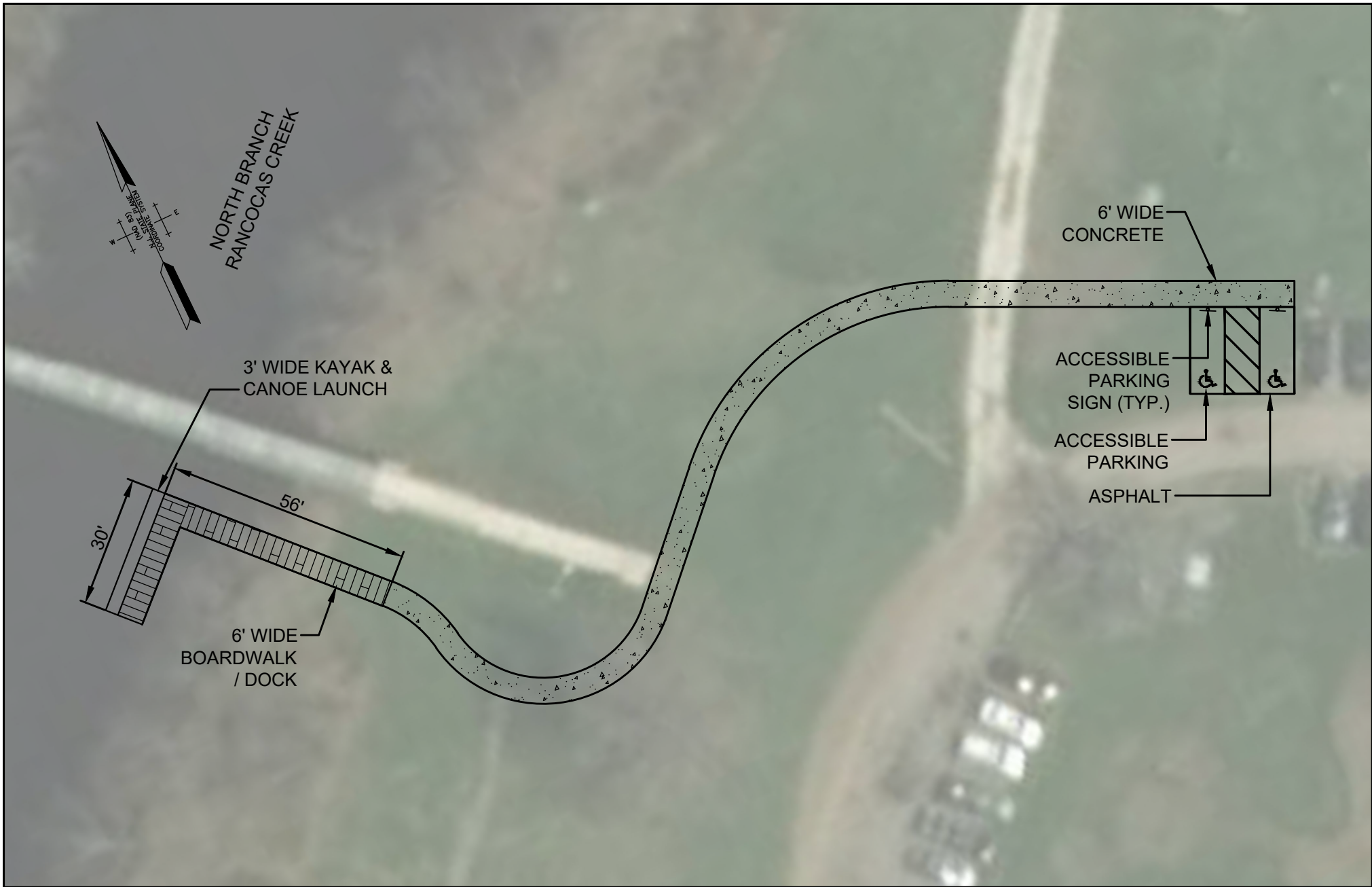
Environmental Resolutions
815 East Gate Drive, Suite 103
Mt. Laurel, NJ 08054
tel. 856.235.7170 fax 856.273.9239

PROJECT # 29000
DATE: 01/25/23
SCALE: 1"=50'

ENVIRONMENTAL RESOLUTIONS, INC.
Engineers • Planners • Scientists • Surveyors

C-1

DRAWING NUMBER:



**IRON WORKS PARK
CANOE LAUNCH**

TOWNSHIP OF MOUNT HOLLY
BURLINGTON COUNTY, NEW JERSEY 08060

REVISIONS	PROJECT # 29000
	DATE: 2.13.2023
	SCALE: 1"=60'
	DRAWN BY: NJW
	REVIEWED BY: NJW

ENVIRONMENTAL RESOLUTIONS, INC.
Engineers • Planners • Scientists • Surveyors
Environmental Resolutions
815 East Gate Drive, Suite 103
Mt. Laurel, NJ 08054
tel. 856.235.7170 fax 856.273.9239

DRAWING REFERENCE:

CONCEPT

C-1

DRAWING NUMBER: