

# OPERATION & MAINTENANCE PLAN

---

## SITE OR SUBDIVISION NAME

TOWN OF VINLAND | WINNEBAGO COUNTY, WISCONSIN



THE HEART OF WISCONSIN

FOR

## TOWN OF VINLAND

WINNEBAGO COUNTY, STATE

OCTOBER, 2025

McMAHON ASSOCIATES, INC.

1445 McMAHON DRIVE NEENAH, WI 54956 Mailing: PO BOX 1025 NEENAH, WI 54957-1025 PH 920.751.4200 MCMGRP.COM

McM. No. V0006-09-23-00760

PTK/car





THE HEART OF WISCONSIN

# OPERATION & MAINTENANCE PLAN

## TABLE OF CONTENTS

---

- I. INTRODUCTION
- II. RESPONSIBLE PARTY
- III. BACKGROUND
- IV. INSPECTION, OPERATION & MAINTENANCE

### APPENDICES

- Appendix A Inspection, Operation & Maintenance Form
- Appendix B Operation & Maintenance Agreement
- Appendix C Plan Set or Drawings

# OPERATION & MAINTENANCE PLAN

## SITE OR SUBDIVISION NAME

TOWN OF VINLAND | WINNEBAGO COUNTY, WISCONSIN



## TOWN OF VINLAND

WINNEBAGO COUNTY, WISCONSIN

OCTOBER 2, 2025

McM. No. V0006-09-23-00760

### I. INTRODUCTION

This Operation & Maintenance (O&M) Plan is applicable to sites and subdivisions with a stormwater management system located in the Town of Vinland, Winnebago County, Wisconsin. More specifically, this O&M Plan is applicable to the following site or subdivision:

Site or Subdivision Name:

Site Address / Location:

Parcel No. / Tax Key No.:

### II. RESPONSIBLE PARTY

The individual or entity responsible for operation and maintenance of the stormwater management system is as follows:

Landowner Name:

Contact Person:

Title:

Phone:

E-mail:

Mailing Address:

City

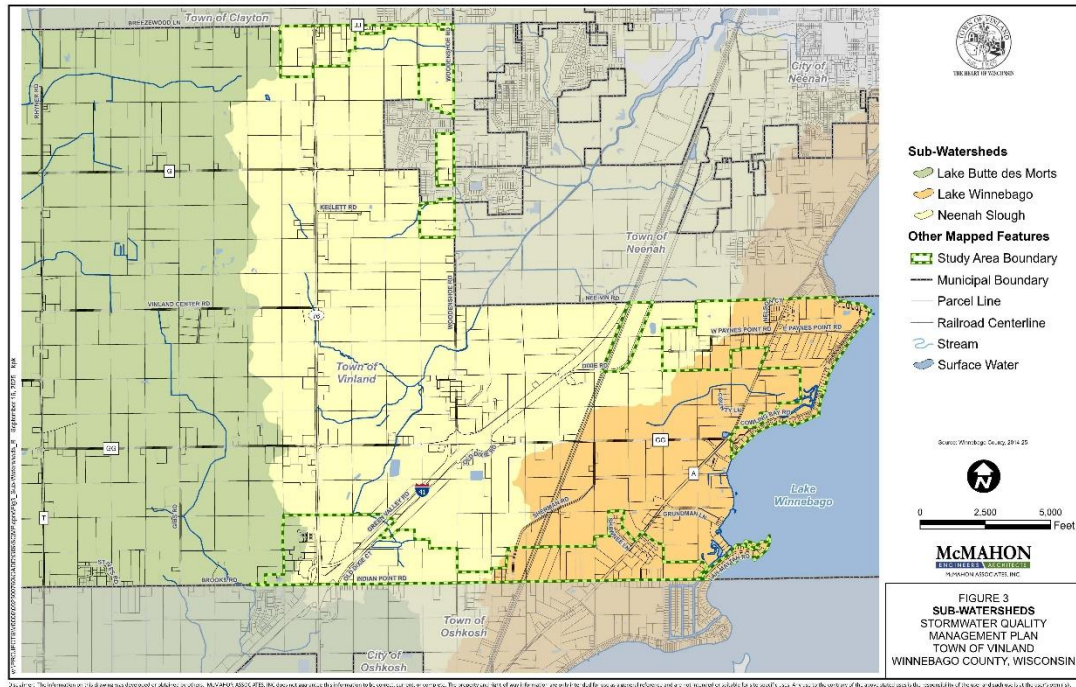
State

Zip Code

### III. BACKGROUND

Landowners and the Town are required by the Wisconsin Department of Natural Resources (WDNR) to reduce the amount of stormwater pollutants discharging into the Lake Butte des Morts,

the Neenah Slough and Lake Winnebago. Stormwater pollutants include sediment, phosphorus, heavy metals, bacteria, oil, litter, and other pollutants. The purpose of the stormwater management system is to provide flood control, reduce pollutants, and improve water quality. To satisfy this purpose, proper inspection, operation, and maintenance of the stormwater management system is needed.



#### IV. INSPECTION, OPERATION & MAINTENANCE

Inspection, operation, and maintenance of the stormwater management system is to be in conformance with the approved plan set, Stormwater Management Plan report, O&M Plan report, and O&M Agreement. In addition, inspection, operation, and maintenance are to conform with WDNR Technical Standards and guidance in effect at the time of site or subdivision plan approval. The most current version of Technical Standards developed by the WDNR can be downloaded at [https://dnr.wisconsin.gov/topic/Stormwater/standards/postconst\\_standards.html](https://dnr.wisconsin.gov/topic/Stormwater/standards/postconst_standards.html). The site or subdivision's stormwater management system includes the following devices or components (check all that apply), which are depicted on the plan set or drawings:

- |   |   |
|---|---|
| <input type="checkbox"/> Wet Detention Pond (1001)          | <input type="checkbox"/> Proprietary Filter Device (1010) |
| <input type="checkbox"/> Infiltration Basin (1003)          | <input type="checkbox"/> Dry Detention Pond               |
| <input type="checkbox"/> Bioretention (1004)                | <input type="checkbox"/> Enhanced Phosphorus Treatment    |
| <input type="checkbox"/> Vegetated Swale (1005)             | <input type="checkbox"/> Underground Detention            |
| <input type="checkbox"/> Proprietary Sediment Device (1006) | <input type="checkbox"/> Hydro Dynamic Separator (HDS)    |
| <input type="checkbox"/> Infiltration Trench (1007)         | <input type="checkbox"/> Catch Basin Cleaning             |
| <input type="checkbox"/> Permeable Pavement (1008)          | <input type="checkbox"/> Other: _____                     |
| <input type="checkbox"/> Rain Garden (1009)                 | <input type="checkbox"/> Other: _____                     |

Inspection, operation, and maintenance of the stormwater management system is to be performed by the responsible party, or a designated representative trained in stormwater management system inspection, operation, and maintenance.

Limited experience and knowledge are typically required to perform routine inspection and maintenance activities after a 0.5-inch rainfall event or greater. Moderate experience and knowledge are typically required to perform annual inspection and maintenance activities. Extensive experience and professional knowledge are typically required to perform inspection and maintenance activities that are required once every five years.

Written records are to be kept which document inspection, operation, and maintenance activities. To assist with record keeping, sample O&M Forms are provided in Appendix A. Records and test results are to be kept for at least seven years.

## **A. Debris & Litter**

After each 0.5-inch rainfall event or greater, inlet and outlet locations are to be inspected for debris, litter, obstructions, and clogging. Debris, litter, obstructions, and clogging are to be removed or repaired as soon as practicable after the rainfall event. At a minimum, the following inlet and outlet locations are to be inspected and maintained: trash racks, grates, orifices, weirs, standpipes, backflow preventors, flap gates, pumps, pipes, spillways, channels, level spreaders, dewatering pipes, filter surfaces, and infiltration surfaces.

Annually, other device locations are to be inspected for debris, litter, obstructions, and clogging. Debris, litter, obstructions, and clogging in these other locations are to be removed annually.

## **B. Vegetation**

About monthly, vegetation is to be visually inspected and maintained during the growing season. Vegetation is to conform with the approved plan set and drawings, unless prior approval to modify vegetation is obtained from the municipality. Consult with and follow the recommendations of a qualified professional that is familiar with the approved plan set, Technical Standards, and stormwater system's purpose.

### **1. Turf Grass**

Refer to the approved plan set and drawings for site areas planted with turf grass. Maintain a turf grass density of at least 70% to reduce soil erosion and encourage stormwater infiltration. Apply fertilizers, herbicides, and water if needed to maintain the turf grass's health and density. Replant or overseed, if needed. Select salt, shade, and wet tolerant species where appropriate. Turf grasses are typically mowed to a +/- 2- to 3-inch height. However, if a Vegetated Swale (1005) is depicted on the plan set, the mowing height needs to conform with the height listed in the following table.

---

Vegetated Swale (1005) Mowing Height: \_\_\_\_\_ inches

---

Vegetated Swale (1005) Density / Mowing Length: \_\_\_\_\_ feet

---

**2. Native Prairie Grass (Larger Area)**

Refer to the approved plan set for the location of larger site areas planted with native prairie. For larger prairie grass areas (e.g. wet or dry detention pond, infiltration basin, vegetated swale), maintain a native prairie grass and wildflower density of at least 70% to reduce soil erosion potential and encourage stormwater infiltration.

Larger prairie areas are typically established by seeding, reseeding, or overseeding, as needed. Temporary erosion mat is typically used to improve seed germination and reduce the need for watering during establishment. Hardwood mulch is not typically used for a larger prairie area. Use salt, shade, and wet tolerant species where appropriate. A larger prairie area does not typically need fertilizer, herbicide, and water applications. A larger prairie area is not frequently mowed. However, if a Vegetated Swale (1005) is depicted on the plan set, the mowing height needs to conform with the height listed in the following table. A larger prairie area is typically burned every few years after the initial establishment period. Consult with a qualified professional.

---

Vegetated Swale (1005) Mowing Height: \_\_\_\_\_ inches

---

Vegetated Swale (1005) Density / Mowing Length: \_\_\_\_\_ feet

---

**3. Native Prairie Grass (Smaller Area)**

Refer to the approved plan set for smaller site areas planted with native prairie. For smaller prairie grass areas (e.g. bioretention, infiltration trench, rain garden), maintain a native prairie grass and wildflower density of about one plant for every 1 to 3 square feet, depending on plant canopy and whether a hardwood mulch layer is utilized. Native prairies consist of deep-rooted plants, which enhance stormwater infiltration and reduce potential for clogging in filtration and infiltration devices.

Smaller prairie areas are typically established using individual bare root or potted plants, as needed. Hardwood mulch or erosion mat is typically used to reduce weed growth between individual plants and reduce the need for watering during the establishment period. Use salt, shade, and wet tolerant species where appropriate. Apply fertilizers, herbicides, and water only if needed to maintain individual plant health and density. Prairie plants rarely need fertilizer, herbicide, and water applications. A smaller prairie area is not typically mowed or burned. Rather, individual weeds are pulled by hand. Consult with a qualified professional.

**4. Wetland**

Refer to the approved plan set for site areas planted with wetland plants. Wetland plants are typically planted or grow naturally within a wet detention pond's safety

shelf or shallow water. Wetland plants shade water, hide litter, hide algae, reduce shoreline erosion, reduce accessibility to deep water, provide habitat for mosquito predators, discourage Canadian Geese, and improve water quality.

Plant spacing depends on the species. Each species has a different density or spacing recommendation for adequate shoreline protection. Wetland plants may need weed control on occasion, but typically not fertilizer or water applications. Replant if needed to manage plant density. Consult with a qualified professional.

**5. Trees & Shrubs**

Refer to the approved plan set for site areas planted with trees and shrubs. Trees and shrubs consist of deep-rooted plants, which enhance water infiltration and reduce potential for clogging within filtration and infiltration devices. Use salt, shade, and wet tolerant species where appropriate.

Trees and shrubs are typically trimmed every year or every few years. Trimming frequency depends on the species and desired aesthetics. Trees and shrubs may also need occasional fertilizer, herbicide, insecticide, and water applications. Replant diseased or dead trees and shrubs. Consult with a qualified professional.

**6. Noxious Weed Growth**

Annually, noxious weeds and undesirable vegetation are to be cut, sprayed, stunted, and/or removed. Refer to the list of noxious weeds published by the WDNR. Consult with a qualified professional, such as an ecologist or landscaper, to identify and eradicate noxious weeds and other undesirable vegetation.

**7. Unauthorized Tree & Shrub Growth**

Annually, unauthorized trees and shrubs will likely grow within stormwater management devices (e.g. willow, cottonwood, buckthorn, etc.). Unauthorized trees and shrubs growth along a stormwater management device's embankment or within a liner have the potential to cause root damage, embankment failure, liner failure, etc. Unauthorized and undesirable woody vegetation is to be eradicated. Unauthorized and undesirable woody vegetation can be cut to a height of 6 inches and then apply a herbicide to the freshly cut stump to stunt growth.

**C. Wildlife**

Annually, wildlife damage to stormwater management devices is to be visually inspected and maintained. Consult with and follow the recommendations of a qualified professional that is familiar with the approved plan set, Technical Standards, stormwater system's purpose, and public safety risks.

**1. Animal Burrow Holes**

Animal burrow holes can cause a fill embankment, dam, liner, or filter to fail. Animal burrow holes are to be repaired immediately, if public safety is at risk.

Animal burrow holes are to be repaired as soon as practicable, if public safety is not at risk.

**2. Birds Near Airports**

If required by Winnebago County, wet detention ponds located within 10,000 feet of the airport are to be inspected for large birds (e.g. geese, gulls, etc.). Birds are attracted to open water. Large birds can become a safety hazard to airplanes and public safety. Wet ponds located within 10,000 feet of the airport may contain a bird deterrent system such as wire grids, bird balls, stone perimeters, specific vegetation, lasers, etc. Bird deterrent systems are to be inspected and maintained in conformance with recommendations of the system manufacturer and Winnebago County. Bird deterrent systems are typically identified on the approved plan set.

**3. Fish**

Fish are not recommended within wet detention ponds. Bottom feeding fish, such as carp, can uproot wetland vegetation and decrease water quality by re-suspending sediment. If adjacent to a water body, backflow preventers or flap gates on outlets can reduce the potential for fish to enter a pond. Fish can be eradicated by spearing or other methods.

**4. Mosquitoes**

Mosquitoes are attracted to open water, wetland vegetation, tall grass, and trees. Mosquito populations should be monitored to control vector-borne diseases, such as the West Nile Virus. Although mosquitoes cannot be permanently eliminated, natural predators can be used to reduce populations. Dragonflies, aquatic insects, bats, and birds are effective natural predators. If biological controls are ineffective, other measures may be utilized, such as harvesting wetland vegetation, burning / mowing tall grass, or artificially fluctuating pond water surface elevations to disrupt breeding. If these measures fail, more aggressive measures such as biological larvicides, larvicidal oils, and chemical adulticides may be necessary. Contact the WDNR before using a biological larvicide, larvicidal oil, or chemical adulticide within or near water.

**D. Erosion**

Annually, erosion is to be inspected and repaired as soon as practicable. A more immediate repair is required if needed to protect public safety, structural integrity, slope stability, or stormwater device performance. A description of the different types of erosion is provided below, including typical maintenance activities.

1. Channel erosion (concentrated flow) may occur along steep slopes, bends, high velocity areas, or continuous flows. For minor erosion, the damaged segment is typically repaired with topsoil, seed, and channel erosion mat. For moderate to



severe erosion, the damaged segment is typically repaired with turf reinforcement mat, riprap with geotextile fabric, or concrete.

2. Rill erosion may occur along moderate to steep slopes. For minor to moderate rill erosion, the damaged area is typically repaired with topsoil, seed, and slope erosion mat. For moderate to severe rill erosion, the damaged area is typically repaired with turf reinforcement mat or riprap with geotextile fabric.
3. Scour erosion may occur at inlet or outlet structures. For minor scour erosion, no action may be needed. For moderate to severe scour erosion, the damaged area is typically repaired with turf reinforcement mat, riprap with geotextile fabric, or concrete.
4. Shoreline erosion may occur at the perimeter of open water areas. Shoreline erosion is more common within wet detention ponds, as compared to other devices. The damaged area is typically repaired with topsoil, dense wetland plantings, turf reinforcement mat, and/or riprap with geotextile fabric.

## **E. Algae & Aesthetics**

Annually, inspect the stormwater management devices for algae concerns or other aesthetic concerns such as graffiti. Algae typically grows within wet detention ponds. If problematic, algae can be removed with a skimmer, hidden with wetland plants, or dispersed with aerators or fountains. Contact the municipality and WDNR prior to adding aerators, fountains, or chemicals. Approvals or permits may be required. Graffiti and other aesthetic concerns can be addressed as needed.

## **F. Pollutants & Illicit Discharges**

Annually, inspect the stormwater management devices for potential pollutants from illegal dumping, illicit discharges, and petroleum sheen. Remove and properly dispose of materials illegally dumped. Contact the municipality if an illicit discharge or petroleum sheen is observed within the stormwater device, site, or subdivision.

## **G. Structural (Inlets & Outlets)**

Annually, inspect inlet and outlet structures for cracking, spalling, corrosion, joint separation, leaks, instability, damage, deterioration, and failure. At a minimum, the following components are to be inspected and maintained: trash racks, grates, orifices, weirs, standpipes, structures, pumps, pipes, backflow preventers, flap gates, spillways, channels, level spreaders, and dewatering pipes. Debris and obstructions are to be removed as soon as practicable. Erosion, scour, seepage, instability, damage, deterioration, failures, and other undesirable conditions are to be repaired as soon as practicable, if detrimental to device performance or a public safety hazard. Please contact a professional engineer or the municipality with concerns.

About once every five years, the annual inspection should be performed by a professional engineer or individual with extensive experience and knowledge.

## **H. Structural (Embankments, Dam Structures & Emergency Spillways)**

After each 0.5-inch rainfall event or greater, embankments, dam structures, and emergency spillways are to be quickly inspected for bulging, cracking, seepage, sliding, slumping, instability, erosion, and other failure risks. Complete the repair immediately if deemed a public safety hazard. Schedule the repair if not an immediate public safety risk. Please contact a professional engineer or the municipality with concerns.

Annually, embankments, dam structures, and emergency spillways are to be more thoroughly inspected for bulging, cracking, seepage, leakage, sliding, slumping, instability, erosion, burrow holes, tree roots, settlement, erosion, scour, damage, deterioration, failures, and other failure risks. Complete the repair immediately if deemed a public safety hazard. Schedule the repair if not an immediate public safety risk. Please contact a professional engineer or the municipality with concerns.

About once every five years, the annual inspection should be performed by a professional engineer or individual with extensive experience and knowledge.

## **I. Structural (Liners)**

Annually, clay and synthetic liners are to be inspected for potential leaks, animal burrow holes, tree or shrub root penetration, shoreline erosion, and other potential failures. Liners are often used for wet ponds and dry ponds. Liners, if any, are typically depicted on the approved plan set or drawings for the stormwater device.

About once every five years, the annual inspection should be performed by a professional engineer or individual with extensive experience and knowledge.

Repair liners using the materials on the approved plan set unless prior approval is obtained from the municipality for a different material. Three liner types are typically used: clay liners, high density polyethylene liners, or geosynthetic clay liners. To repair a clay liner, the damaged area is typically excavated or tilled, and then recompacted to meet liner detail and specifications identified on the approved plan set. To repair HDPE or geosynthetic liners, a qualified contractor is typically required. If the liner repair is located beneath a surface water, dewatering is typically required. Dewatering is to be performed in conformance with WDNR Technical Standards and permits. Dewatering of both surface water and groundwater may be required.

## **J. Sediment Accumulation**

Annually, sediment accumulation is to be visually inspected for undesirable conditions. Sediments accumulate most rapidly at inlets. Sediment is to be removed when detrimental

to stormwater device performance, which is generally defined in Table 1 and WDNR Technical Standards.

About once every five -years, sediment accumulation is to be measured. The measurement is typically performed by a professional engineer, surveyor, or individual with extensive experience and knowledge. If recommended by a professional engineer and approved by the municipality, the time elapsed between detailed sediment measurements can be decreased or increased using trend data.

Stormwater Device	Required Sediment Removal
Wet Detention Pond	< 3.5 feet of average water above sediment
Infiltration Basin	Active storage volume reduced by > 10%
Bioretention	Active storage volume reduced by > 10%
Vegetated Swale	Active storage volume reduced by > 10%
Proprietary Sediment Device	_____ time(s) per _____
Infiltration Trench	Active storage volume reduced by > 10%
Permeable Pavement	_____
Rain Garden	Active storage volume reduced by > 10%
Proprietary Filter Device	_____ time(s) per _____
Dry Detention Pond	Active storage volume reduced by > 10%
Underground Detention	Active storage volume reduced by > 10%
Hydro Dynamic Separator	_____ time(s) per _____
Catch Basin Cleaning	_____ time(s) per _____

Sediment removal is to be in accordance with Wisconsin Administrative Code NR 528 and associated guidance documents. Sediment sampling may be required prior to removal and disposal to determine if accumulated sediment is contaminated. The responsible party or sediment manager typically hires a professional to conduct sediment sampling, analysis, and evaluations if deemed appropriate or necessary. Permits may be required for the sediment removal activity.

Sediment removal is typically performed using dredging or excavating techniques. Liners are to be protected during sediment removal. Refer to the approved plan set and record drawing for liner locations and elevations. Confirm liner elevations prior to and during dredging or excavating operations. To prevent a liner failure during sediment removal, monitor and control groundwater elevations beneath the liner.

## **K. Aerators & Fountains**

After each 0.5-inch rainfall event or greater, aerators and fountains are to be inspected. Aerators and fountains are to be inspected for conformance with approved elevation, float, and timer operational requirements. Aerators and fountains are typically depicted on the approved plan set or drawings for the stormwater device.

Aerators and fountains are required to be operated and maintained in conformance with Wet Detention Pond (1001). Aerators and fountains require local approval prior to the initial installation and/or future modification. Aerators and fountains may or may not need to include an automatic shut-off as the pond’s water begins to rise during a rainfall event. For this site or subdivision, the following aerator or fountain information is provided:

Pond Location:			
Type (select one):	<input type="checkbox"/> None	<input type="checkbox"/> Aerator	<input type="checkbox"/> Fountain
Water Surface Area:	Increased?	<input type="checkbox"/> Yes or <input type="checkbox"/> No	Influence Area _____ acres
Water Intake:	<input type="checkbox"/> Vertical or <input type="checkbox"/> Horizontal	Influence Depth _____ feet	
Manufacturer:			
Model Number:			
Motor / Pump:	_____ HP	_____ Volts	_____ Hertz
Float & Timer:	<input type="checkbox"/> Yes <input type="checkbox"/> No <input type="checkbox"/> N/A		
Motor and pump are to remain off for at least _____ hours after pond’s water surface returns to its normal elevation.			

**L. Enhanced Phosphorus Removal**

Enhanced phosphorus removal systems are used in some wet detention ponds. Enhanced phosphorus removal systems are to be inspected, operated, and maintained in conformance with the approved plan set, drawings, and Technical Standards. After each 0.5-inch rainfall event or greater, enhanced phosphorus removal systems are to be inspected and maintained.

**M. Filtration & Infiltration Surfaces**

Filtration and infiltration surfaces are used in some stormwater management devices, including Infiltration Basins (1003), Bioretention & Biofiltration (1004), Vegetated Swales (1005), Infiltration Trenches (1007), Permeable Pavements (1008), and Rain Gardens (1009), and Proprietary Filtration (1010). Filtration and infiltration surfaces are to be protected from clogging and compaction by restricting unnecessary weight, such as snow piles and vehicles.

After each 0.5-inch rainfall event or greater, filtration and infiltration surfaces are to be visually inspected for debris, obstructions, damage, clogging, and compaction. Debris and obstructions are to be removed as soon as practicable. Damage is to be repaired as soon as practicable, if detrimental to system performance or a safety hazard. Clogging and compaction are to be mitigated as soon as practicable, and ideally before the next rainfall event. Refer to the operation and maintenance form for acceptable draining times for surface water and subsurface water.

Annually, filtration and infiltration surfaces are to be visually inspected for debris, obstructions, damage, animal burrow holes, erosion, mulch thickness (if any), clogging, and compaction. In addition, water levels below the ground surface are to be measured at observation wells, clean outs, and standpipes. Debris and obstructions are to be removed as soon as practicable. Damage, erosion, and mulch thickness (if any) are to be repaired as soon as practicable, if detrimental to system performance or a safety hazard. Clogging and compaction are to be mitigated as soon as practicable. Refer to the O&M Form for acceptable draining times for surface and subsurface water.

About once every five years, the annual inspection should be performed by a professional engineer or individual with extensive experience and knowledge.

#### **1. Clogging & Compaction Mitigation**

Clogging and compaction typically reduce the movement of stormwater through a filtration or infiltration surface. For design purposes, the maximum design drawdown time for surface water ponding is typically 24 hours after a rainfall event ends. Similarly, for design purposes, the maximum drawdown time for each layer is typically an additional 24-hours per layer. Refer to the operation and maintenance form and the applicable Technical Standards for acceptable draining times for each device.

For maintenance purposes, the filtration or infiltration surface is typically clogged if standing water is observed over 50% of the device's surface or within one or more observation wells. Refer to the operation and maintenance form and the applicable Technical Standards for acceptable draining times for each device.

The following techniques can be used to mitigate the effects of clogging or compaction: deep tilling, chisel plowing, scarifying, replacing upper soil surface, replacing entire soil layer, amending soils, etc. In addition, deep rooted plants, such as native prairie, trees, and shrubs can be used to reduce clogging potential. Refer to the vegetation section for a vegetation discussion.

#### **2. Hardwood Mulch Surface Layer**

Hardwood mulch is sometimes used at the surface of a filtering or infiltrating device to reduce potential weed growth and plant watering. For example, a hardwood mulch layer is often used in bioretention, biofiltration, and rain garden devices. Add hardwood mulch when needed to maintain the desired mulch thickness. Use erosion mat if needed to prevent floating of hardwood mulch. Use care so the hardwood mulch thickness does not impact the device's surface storage volume, draining time, and consequently the device's performance.

### **3. Stone Surface Layer**

Stone is sometimes used at the surface of a filtering or infiltrating device to reduce potential weed growth and plant watering. For example, a stone layer is often used within infiltration trench devices. Add or replace stone when needed to maintain the desired stone thickness and device performance. Use care so the stone thickness does not impact the device's surface storage volume, draining time, and consequently the device's performance.

### **4. Infiltration Basins**

During early spring, an infiltration basin's bypass and dewatering pipes are to be closed, such that stormwater flows are not bypassed away from the infiltration surface during spring, summer, and fall operation. Infiltration basins are required to have a bypass or dewatering pipe which directs stormwater away from the infiltrating surface during winter months due to concerns with deicers entering groundwater.

During late fall, an infiltration basin's bypass and dewatering pipe is to be opened, such that stormwater flows are bypassed away from the infiltration surface during winter.

## APPENDIX A

---

### Inspection, Operation & Maintenance Form



Town of Vinland  
6085 County Road T  
Phone: 920.235.6953  
Oshkosh, WI 54904-9734

## STORMWATER MANAGEMENT SYSTEM INSPECTION, OPERATION, & MAINTENANCE FORM

Site or Subdivision Name:		Parcel ID:		
Site Address / Location:				
Inspection Frequency (check one): <input type="checkbox"/> > 0.5 Inch Rain (R) <input type="checkbox"/> Monthly (M) <input type="checkbox"/> Biannual (B) <input type="checkbox"/> Annual (A) <input type="checkbox"/> 5-Year Cycle (C) <input type="checkbox"/> Other				
Date of Inspection:		Inspector Name:		Maintenance Crew Leader Name:
Maintenance Items – Wet or Dry Detention Pond (1001)	Frequency	Observed?	Inspector Comments	Maintenance Completed
1. Debris & Litter – At inlets and outlets (grate, orifice, weir, pipe, spillway, etc.)	R,M,B,A,C	<input type="checkbox"/> Yes <input type="checkbox"/> No		<input type="checkbox"/> Yes
2. Debris & Litter – At other device locations (open water, shoreline, vegetation)	A,C	<input type="checkbox"/> Yes <input type="checkbox"/> No		<input type="checkbox"/> Yes
3. Vegetation – Vegetation health or density concern (water, disease, etc.)	M,B,A,C	<input type="checkbox"/> Yes <input type="checkbox"/> No		<input type="checkbox"/> Yes
4. Vegetation – Noxious weed or tree root concern (unauthorized planting, etc.)	A,C	<input type="checkbox"/> Yes <input type="checkbox"/> No		<input type="checkbox"/> Yes
5. Wildlife – Burrow holes, fish damage, animal paths, or other concern	A,C	<input type="checkbox"/> Yes <input type="checkbox"/> No		<input type="checkbox"/> Yes
6. Erosion – Channel, rill, scour, shoreline, or other erosion concern	A,C	<input type="checkbox"/> Yes <input type="checkbox"/> No		<input type="checkbox"/> Yes
7. Structural inlet or outlet concern (crack, spalling, corrosion, pipe joint, etc.)	A,C	<input type="checkbox"/> Yes <input type="checkbox"/> No		<input type="checkbox"/> Yes
8. Structural liner concern (burrow hole, tree/shrub root, erosion, leak, etc.)	A,C	<input type="checkbox"/> Yes <input type="checkbox"/> No		<input type="checkbox"/> Yes
9. Structural embankment concern (seeping, settling, slumping, roots, etc.)	R,M,B,A,C	<input type="checkbox"/> Yes <input type="checkbox"/> No		<input type="checkbox"/> Yes
10. Structural spillway concern (dimensions, freeboard, unstable, leaking, etc.)	R,M,B,A,C	<input type="checkbox"/> Yes <input type="checkbox"/> No		<input type="checkbox"/> Yes
11. Backflow preventor or flap gate concern (clogged, missing, etc.)	R,M,B,A,C	<input type="checkbox"/> Yes <input type="checkbox"/> No		<input type="checkbox"/> Yes
12. Aerator or fountain system operational concern	R,M,B,A,C	<input type="checkbox"/> Yes <input type="checkbox"/> No		<input type="checkbox"/> Yes
13. If < 10,000 feet from airport, bird deterrent concern (large bird, etc.)	M,B,A,C	<input type="checkbox"/> Yes <input type="checkbox"/> No		<input type="checkbox"/> Yes
14. Wet Pond – Sediment accumulation concern (PP water depth < 3.5 feet)	C	<input type="checkbox"/> Yes <input type="checkbox"/> No		<input type="checkbox"/> Yes
15. Dry Pond – Sediment accumulation concern (storage reduced by > 10%)	C	<input type="checkbox"/> Yes <input type="checkbox"/> No		<input type="checkbox"/> Yes
16. Other (graffiti, illicit discharge, illegal dumping, etc.):		<input type="checkbox"/> Yes <input type="checkbox"/> No		<input type="checkbox"/> Yes





Town of Vinland  
6085 County Road T  
Phone: 920.235.6953  
Oshkosh, WI 54904-9734

## STORMWATER MANAGEMENT SYSTEM INSPECTION, OPERATION, & MAINTENANCE FORM

Site or Subdivision Name:			Parcel ID:	
Site Address / Location:				
Inspection Frequency (check one): <input type="checkbox"/> > 0.5 Inch Rain (R) <input type="checkbox"/> Monthly (M) <input type="checkbox"/> Biannual (B) <input type="checkbox"/> Annual (A) <input type="checkbox"/> 5-Year Cycle (C) <input type="checkbox"/> Other				
Date of Inspection:		Inspector Name:		Maintenance Crew Leader Name:
<b>Maintenance Items – Infiltration Basin (1003)</b>	<b>Frequency</b>	<b>Observed?</b>	<b>Inspector Comments</b>	<b>Maintenance Completed</b>
1. Debris & Litter – At inlets and outlets (grate, orifice, weir, pipe, spillway, etc.)	R,M,B,A,C	<input type="checkbox"/> Yes <input type="checkbox"/> No		<input type="checkbox"/> Yes
2. Debris & Litter – At other device locations (vegetation)	A,C	<input type="checkbox"/> Yes <input type="checkbox"/> No		<input type="checkbox"/> Yes
3. Vegetation – Vegetation health or density concern (water, disease, etc.)	M,B,A,C	<input type="checkbox"/> Yes <input type="checkbox"/> No		<input type="checkbox"/> Yes
4. Vegetation – Noxious weed or tree root concern (unauthorized planting, etc.)	A,C	<input type="checkbox"/> Yes <input type="checkbox"/> No		<input type="checkbox"/> Yes
5. Wildlife – Burrow holes, fish damage, animal paths, or other concern	A,C	<input type="checkbox"/> Yes <input type="checkbox"/> No		<input type="checkbox"/> Yes
6. Erosion – Channel, rill, scour, or other erosion concern	A,C	<input type="checkbox"/> Yes <input type="checkbox"/> No		<input type="checkbox"/> Yes
7. Structural inlet or outlet concern (crack, spalling, corrosion, pipe joint, etc.)	A,C	<input type="checkbox"/> Yes <input type="checkbox"/> No		<input type="checkbox"/> Yes
8. Structural embankment concern (seeping, settling, slumping, roots, etc.)	R,M,B,A,C	<input type="checkbox"/> Yes <input type="checkbox"/> No		<input type="checkbox"/> Yes
9. Structural spillway concern (dimensions, freeboard, unstable, leaking, etc.)	R,M,B,A,C	<input type="checkbox"/> Yes <input type="checkbox"/> No		<input type="checkbox"/> Yes
10. Backflow preventor or flap gate concern (clogged, missing, etc.)	R,M,B,A,C	<input type="checkbox"/> Yes <input type="checkbox"/> No		<input type="checkbox"/> Yes
11. Level spreader system concern (flow not evenly spread out, etc.)	R,M,B,A,C	<input type="checkbox"/> Yes <input type="checkbox"/> No		<input type="checkbox"/> Yes
12. Clogging or compaction concern (water > 24 to 72 hrs after > 0.5" rain)	R,M,B,A,C	<input type="checkbox"/> Yes <input type="checkbox"/> No		<input type="checkbox"/> Yes
13. Bypass or dewatering system concern (winter/summer operation, etc.)	B,A,C	<input type="checkbox"/> Yes <input type="checkbox"/> No		<input type="checkbox"/> Yes
14. Sediment accumulation concern (surface storage reduced by > 10%)	C	<input type="checkbox"/> Yes <input type="checkbox"/> No		<input type="checkbox"/> Yes
15. Other (graffiti, illicit discharge, illegal dumping, etc.):		<input type="checkbox"/> Yes <input type="checkbox"/> No		<input type="checkbox"/> Yes



Town of Vinland  
6085 County Road T  
Phone: 920.235.6953  
Oshkosh, WI 54904-9734

## STORMWATER MANAGEMENT SYSTEM INSPECTION, OPERATION, & MAINTENANCE FORM

Site or Subdivision Name:				Parcel ID:	
Site Address / Location:					
Inspection Frequency (check one): <input type="checkbox"/> > 0.5 Inch Rain (R) <input type="checkbox"/> Monthly (M) <input type="checkbox"/> Biannual (B) <input type="checkbox"/> Annual (A) <input type="checkbox"/> 5-Year Cycle (C) <input type="checkbox"/> Other					
Date of Inspection:		Inspector Name:		Maintenance Crew Leader Name:	
Maintenance Items – Bioretention or Biofiltration (1004)	Frequency	Observed?	Inspector Comments	Maintenance Completed	
1. Debris & Litter – At inlets and outlets (grate, orifice, weir, pipe, filter, etc.)	R,M,B,A,C	<input type="checkbox"/> Yes <input type="checkbox"/> No		<input type="checkbox"/> Yes	
2. Debris & Litter – At other device locations (vegetation)	A,C	<input type="checkbox"/> Yes <input type="checkbox"/> No		<input type="checkbox"/> Yes	
3. Vegetation – Vegetation health or density concern (water, disease, etc.)	M,B,A,C	<input type="checkbox"/> Yes <input type="checkbox"/> No		<input type="checkbox"/> Yes	
4. Vegetation – Noxious weed or tree root concern (unauthorized planting, etc.)	A,C	<input type="checkbox"/> Yes <input type="checkbox"/> No		<input type="checkbox"/> Yes	
5. Wildlife – Burrow holes, animal paths, or other concern	A,C	<input type="checkbox"/> Yes <input type="checkbox"/> No		<input type="checkbox"/> Yes	
6. Erosion – Channel, rill, scour, or other erosion concern	A,C	<input type="checkbox"/> Yes <input type="checkbox"/> No		<input type="checkbox"/> Yes	
7. Structural inlet or outlet concern (crack, spalling, corrosion, pipe joint, etc.)	A,C	<input type="checkbox"/> Yes <input type="checkbox"/> No		<input type="checkbox"/> Yes	
8. Structural embankment concern (seeping, settling, slumping, roots, etc.)	A,C	<input type="checkbox"/> Yes <input type="checkbox"/> No		<input type="checkbox"/> Yes	
9. Structural spillway concern (dimensions, freeboard, unstable, leaking, etc.)	A,C	<input type="checkbox"/> Yes <input type="checkbox"/> No		<input type="checkbox"/> Yes	
10. Clogging or compaction concern (surface water > 24 hrs after > 0.5" rain)	R,M,B,A,C	<input type="checkbox"/> Yes <input type="checkbox"/> No		<input type="checkbox"/> Yes	
11. Clogging or compaction concern (subsurface water > 72 hrs after > 0.5" rain)	A,C	<input type="checkbox"/> Yes <input type="checkbox"/> No		<input type="checkbox"/> Yes	
12. Surface storage concern (depth is not within 10% of design plan, etc.)	A,C	<input type="checkbox"/> Yes <input type="checkbox"/> No		<input type="checkbox"/> Yes	
13. Mulch concern (mulch needed, surface storage reduced by > 10%, etc.)	A,C	<input type="checkbox"/> Yes <input type="checkbox"/> No		<input type="checkbox"/> Yes	
14. Filter surface concern (animal burrow holes, filter bypass, etc.)	A,C	<input type="checkbox"/> Yes <input type="checkbox"/> No		<input type="checkbox"/> Yes	
15. Sediment accumulation concern (surface storage depth reduced by > 10%)	C	<input type="checkbox"/> Yes <input type="checkbox"/> No		<input type="checkbox"/> Yes	
16. Other (graffiti, illicit discharge, illegal dumping, etc.):		<input type="checkbox"/> Yes <input type="checkbox"/> No		<input type="checkbox"/> Yes	



Town of Vinland  
6085 County Road T  
Phone: 920.235.6953  
Oshkosh, WI 54904-9734

## STORMWATER MANAGEMENT SYSTEM INSPECTION, OPERATION, & MAINTENANCE FORM

Site or Subdivision Name:		Parcel ID:		
Site Address / Location:				
Inspection Frequency (check one): <input type="checkbox"/> > 0.5 Inch Rain (R) <input type="checkbox"/> Monthly (M) <input type="checkbox"/> Biannual (B) <input type="checkbox"/> Annual (A) <input type="checkbox"/> 5-Year Cycle (C) <input type="checkbox"/> Other				
Date of Inspection:		Inspector Name:		Maintenance Crew Leader Name:
Maintenance Items – Vegetated Swale (1005)	Frequency	Observed?	Inspector Comments	Maintenance Completed
1. Debris & Litter – At inlets and outlets (grate, pipe, culvert, etc.)	R,M,B,A,C	<input type="checkbox"/> Yes <input type="checkbox"/> No		<input type="checkbox"/> Yes
2. Debris & Litter – At other device locations (vegetation, filter surface)	A,C	<input type="checkbox"/> Yes <input type="checkbox"/> No		<input type="checkbox"/> Yes
3. Vegetation – Vegetation health or density concern (water, disease, etc.)	M,B,A,C	<input type="checkbox"/> Yes <input type="checkbox"/> No		<input type="checkbox"/> Yes
4. Vegetation – Noxious weed or tree root concern (unauthorized planting, etc.)	A,C	<input type="checkbox"/> Yes <input type="checkbox"/> No		<input type="checkbox"/> Yes
5. Wildlife – Burrow holes, animal paths, or other concern	A,C	<input type="checkbox"/> Yes <input type="checkbox"/> No		<input type="checkbox"/> Yes
6. Erosion – Channel, rill, scour, or other erosion concern	A,C	<input type="checkbox"/> Yes <input type="checkbox"/> No		<input type="checkbox"/> Yes
7. Structural inlet or outlet concern (crack, spalling, corrosion, pipe joint, etc.)	A,C	<input type="checkbox"/> Yes <input type="checkbox"/> No		<input type="checkbox"/> Yes
8. Structural embankment concern (seeping, settling, slumping, roots, etc.)	A,C	<input type="checkbox"/> Yes <input type="checkbox"/> No		<input type="checkbox"/> Yes
9. Clogging or compaction concern (surface water > 48 hrs after > 0.5" rain)	R,M,B,A,C	<input type="checkbox"/> Yes <input type="checkbox"/> No		<input type="checkbox"/> Yes
10. Mowing height concern (incorrect mowing height based on design, etc.)	M,B,A,C	<input type="checkbox"/> Yes <input type="checkbox"/> No		<input type="checkbox"/> Yes
11. Swale length or density concern (swale enclosed, lined, stone added, etc.)	A,C	<input type="checkbox"/> Yes <input type="checkbox"/> No		<input type="checkbox"/> Yes
12. Permanent ditch check concern (ditch check is required but missing, etc.)	A,C	<input type="checkbox"/> Yes <input type="checkbox"/> No		<input type="checkbox"/> Yes
13. Sediment accumulation concern (surface or swale depth reduced by > 10%)	C	<input type="checkbox"/> Yes <input type="checkbox"/> No		<input type="checkbox"/> Yes
14. Other (graffiti, illicit discharge, illegal dumping, etc.):		<input type="checkbox"/> Yes <input type="checkbox"/> No		<input type="checkbox"/> Yes



Town of Vinland  
6085 County Road T  
Phone: 920.235.6953  
Oshkosh, WI 54904-9734

## STORMWATER MANAGEMENT SYSTEM INSPECTION, OPERATION, & MAINTENANCE FORM

Site or Subdivision Name:				Parcel ID:	
Site Address / Location:					
Inspection Frequency (check one): <input type="checkbox"/> > 0.5 Inch Rain (R) <input type="checkbox"/> Monthly (M) <input type="checkbox"/> Biannual (B) <input type="checkbox"/> Annual (A) <input type="checkbox"/> 5-Year Cycle (C) <input type="checkbox"/> Other					
Date of Inspection:		Inspector Name:		Maintenance Crew Leader Name:	
<b>Maintenance Items – Proprietary Sedimentation Device (1006)</b>	<b>Frequency</b>	<b>Observed?</b>	<b>Inspector Comments</b>	<b>Maintenance Completed</b>	
1. Debris & Litter – At inlets and outlets (grate, orifice, weir, pipe, etc.)	R,M,B,A,C	<input type="checkbox"/> Yes <input type="checkbox"/> No		<input type="checkbox"/> Yes	
2. Debris & Litter – At other device locations (open water, vegetation)	A,C	<input type="checkbox"/> Yes <input type="checkbox"/> No		<input type="checkbox"/> Yes	
3. Vegetation – Vegetation health or density concern (water, disease, etc.)	M,B,A,C	<input type="checkbox"/> Yes <input type="checkbox"/> No		<input type="checkbox"/> Yes	
4. Vegetation – Noxious weed or tree root concern (unauthorized planting, etc.)	A,C	<input type="checkbox"/> Yes <input type="checkbox"/> No		<input type="checkbox"/> Yes	
5. Wildlife – Burrow holes or other concern	A,C	<input type="checkbox"/> Yes <input type="checkbox"/> No		<input type="checkbox"/> Yes	
6. Erosion – Channel, rill, scour, or other erosion concern	A,C	<input type="checkbox"/> Yes <input type="checkbox"/> No		<input type="checkbox"/> Yes	
7. Structural inlet or outlet concern (crack, spalling, corrosion, pipe joint, etc.)	A,C	<input type="checkbox"/> Yes <input type="checkbox"/> No		<input type="checkbox"/> Yes	
8. Structural wall or embankment concern (seeping, settling, failing, etc.)	A,C	<input type="checkbox"/> Yes <input type="checkbox"/> No		<input type="checkbox"/> Yes	
9. Structural spillway concern (dimensions, freeboard, unstable, leaking, etc.)	A,C	<input type="checkbox"/> Yes <input type="checkbox"/> No		<input type="checkbox"/> Yes	
10. Structural liner concern (burrow holes, puncture, leak, etc.)	A,C	<input type="checkbox"/> Yes <input type="checkbox"/> No		<input type="checkbox"/> Yes	
11. Sediment accumulation concern (exceeds maximum allowed)	A,C	<input type="checkbox"/> Yes <input type="checkbox"/> No		<input type="checkbox"/> Yes	
12. Other (graffiti, illicit discharge, illegal dumping, oil sheen, etc.):		<input type="checkbox"/> Yes <input type="checkbox"/> No		<input type="checkbox"/> Yes	



Town of Vinland  
6085 County Road T  
Phone: 920.235.6953  
Oshkosh, WI 54904-9734

## STORMWATER MANAGEMENT SYSTEM INSPECTION, OPERATION, & MAINTENANCE FORM

Site or Subdivision Name:		Parcel ID:		
Site Address / Location:				
Inspection Frequency (check one): <input type="checkbox"/> > 0.5 Inch Rain (R) <input type="checkbox"/> Monthly (M) <input type="checkbox"/> Biannual (B) <input type="checkbox"/> Annual (A) <input type="checkbox"/> 5-Year Cycle (C) <input type="checkbox"/> Other				
Date of Inspection:		Inspector Name:		Maintenance Crew Leader Name:
Maintenance Items – Infiltration Trench (1007)	Frequency	Observed?	Inspector Comments	Maintenance Completed
1. Debris & Litter – At inlets and outlets (grate, weir, pipe, filter, etc.)	R,M,B,A,C	<input type="checkbox"/> Yes <input type="checkbox"/> No		<input type="checkbox"/> Yes
2. Debris & Litter – At other device locations (vegetation)	A,C	<input type="checkbox"/> Yes <input type="checkbox"/> No		<input type="checkbox"/> Yes
3. Vegetation – Vegetation health or density concern (water, disease, etc.)	M,B,A,C	<input type="checkbox"/> Yes <input type="checkbox"/> No		<input type="checkbox"/> Yes
4. Vegetation – Noxious weed or tree root concern (unauthorized planting, etc.)	A,C	<input type="checkbox"/> Yes <input type="checkbox"/> No		<input type="checkbox"/> Yes
5. Wildlife – Burrow holes or other concern	A,C	<input type="checkbox"/> Yes <input type="checkbox"/> No		<input type="checkbox"/> Yes
6. Erosion – Channel, rill, scour, or other erosion concern	A,C	<input type="checkbox"/> Yes <input type="checkbox"/> No		<input type="checkbox"/> Yes
7. Structural inlet or outlet concern (crack, spalling, corrosion, pipe joint, etc.)	A,C	<input type="checkbox"/> Yes <input type="checkbox"/> No		<input type="checkbox"/> Yes
8. Structural embankment concern (seeping, settling, slumping, roots, etc.)	A,C	<input type="checkbox"/> Yes <input type="checkbox"/> No		<input type="checkbox"/> Yes
9. Clogging or compaction concern (surface water > 24 hrs after > 0.5" rain)	R,M,B,A,C	<input type="checkbox"/> Yes <input type="checkbox"/> No		<input type="checkbox"/> Yes
10. Clogging or compaction concern (subsurface water > 72 hrs after > 0.5" rain)	B,A,C	<input type="checkbox"/> Yes <input type="checkbox"/> No		<input type="checkbox"/> Yes
11. Surface mulch or stone concern (thickness more than ±1" of design depth)	A,C	<input type="checkbox"/> Yes <input type="checkbox"/> No		<input type="checkbox"/> Yes
12. Infiltration surface concern (animal burrow holes, infiltration bypass, etc.)	A,C	<input type="checkbox"/> Yes <input type="checkbox"/> No		<input type="checkbox"/> Yes
13. Sediment accumulation concern (surface storage reduced by > 10%)	C	<input type="checkbox"/> Yes <input type="checkbox"/> No		<input type="checkbox"/> Yes
14. Other (graffiti, illicit discharge, illegal dumping, etc.):		<input type="checkbox"/> Yes <input type="checkbox"/> No		<input type="checkbox"/> Yes



Town of Vinland  
6085 County Road T  
Phone: 920.235.6953  
Oshkosh, WI 54904-9734

## STORMWATER MANAGEMENT SYSTEM INSPECTION, OPERATION, & MAINTENANCE FORM

Site or Subdivision Name:			Parcel ID:	
Site Address / Location:				
Inspection Frequency (check one): <input type="checkbox"/> > 0.5 Inch Rain (R) <input type="checkbox"/> Monthly (M) <input type="checkbox"/> Biannual (B) <input type="checkbox"/> Annual (A) <input type="checkbox"/> 5-Year Cycle (C) <input type="checkbox"/> Other				
Date of Inspection:		Inspector Name:		Maintenance Crew Leader Name:
Maintenance Items – Permeable Pavement (1008)	Frequency	Observed?	Inspector Comments	Maintenance Completed
1. Debris & Litter – At inlets and outlets (grate, pavement surface, etc.)	R,M,B,A,C	<input type="checkbox"/> Yes <input type="checkbox"/> No		<input type="checkbox"/> Yes
2. Debris & Litter – At other device locations (vegetation, run on areas, etc.)	A,C	<input type="checkbox"/> Yes <input type="checkbox"/> No		<input type="checkbox"/> Yes
3. Vegetation – Vegetation health, density, or erosion concern from run on area	M,B,A,C	<input type="checkbox"/> Yes <input type="checkbox"/> No		<input type="checkbox"/> Yes
4. Vegetation – Noxious weed or tree root concern from run on area	A,C	<input type="checkbox"/> Yes <input type="checkbox"/> No		<input type="checkbox"/> Yes
5. Wildlife – Burrow holes or other concern	A,C	<input type="checkbox"/> Yes <input type="checkbox"/> No		<input type="checkbox"/> Yes
6. Erosion – Channel, rill, scour, or other erosion concern	A,C	<input type="checkbox"/> Yes <input type="checkbox"/> No		<input type="checkbox"/> Yes
7. Structural inlet or outlet concern (crack, spalling, corrosion, joint, etc.)	A,C	<input type="checkbox"/> Yes <input type="checkbox"/> No		<input type="checkbox"/> Yes
8. Pavement clogging concern (surface water > 24 hrs after > 0.5" rain)	R,M,B,A,C	<input type="checkbox"/> Yes <input type="checkbox"/> No		<input type="checkbox"/> Yes
9. Clogging or compaction concern (subsurface water > 72 hrs after > 0.5" rain)	A,C	<input type="checkbox"/> Yes <input type="checkbox"/> No		<input type="checkbox"/> Yes
10. Infiltration surface concern (infiltration bypass, etc.)	A,C	<input type="checkbox"/> Yes <input type="checkbox"/> No		<input type="checkbox"/> Yes
11. Pavement concern (deformation, settling, cracking, sealing, deicer, etc.)	A,C	<input type="checkbox"/> Yes <input type="checkbox"/> No		<input type="checkbox"/> Yes
12. If pavers, joint aggregate replenishment concern	A,C	<input type="checkbox"/> Yes <input type="checkbox"/> No		<input type="checkbox"/> Yes
13. Regenerative air or vacuum sweeping concern (twice per year)	B	<input type="checkbox"/> Yes <input type="checkbox"/> No		<input type="checkbox"/> Yes
14. Other (graffiti, illicit discharge, illegal dumping, etc.):		<input type="checkbox"/> Yes <input type="checkbox"/> No		<input type="checkbox"/> Yes



Town of Vinland  
6085 County Road T  
Phone: 920.235.6953  
Oshkosh, WI 54904-9734

## STORMWATER MANAGEMENT SYSTEM INSPECTION, OPERATION, & MAINTENANCE FORM

Site or Subdivision Name:				Parcel ID:	
Site Address / Location:					
Inspection Frequency (check one): <input type="checkbox"/> > 0.5 Inch Rain (R) <input type="checkbox"/> Monthly (M) <input type="checkbox"/> Biannual (B) <input type="checkbox"/> Annual (A) <input type="checkbox"/> 5-Year Cycle (C) <input type="checkbox"/> Other					
Date of Inspection:		Inspector Name:		Maintenance Crew Leader Name:	
Maintenance Items – Rain Garden (1009)	Frequency	Observed?	Inspector Comments	Maintenance Completed	
1. Debris & Litter – At inlets and outlets (grate, pipe, filter surface, etc.)	R,M,B,A,C	<input type="checkbox"/> Yes <input type="checkbox"/> No		<input type="checkbox"/> Yes	
2. Debris & Litter – At other device locations (vegetation)	A,C	<input type="checkbox"/> Yes <input type="checkbox"/> No		<input type="checkbox"/> Yes	
3. Vegetation – Vegetation health or density concern (water, disease, etc.)	M,B,A,C	<input type="checkbox"/> Yes <input type="checkbox"/> No		<input type="checkbox"/> Yes	
4. Vegetation – Noxious weed or tree root concern (unauthorized planting, etc.)	A,C	<input type="checkbox"/> Yes <input type="checkbox"/> No		<input type="checkbox"/> Yes	
5. Wildlife – Burrow holes, animal paths, or other concern	A,C	<input type="checkbox"/> Yes <input type="checkbox"/> No		<input type="checkbox"/> Yes	
6. Erosion – Channel, rill, scour, or other erosion concern	A,C	<input type="checkbox"/> Yes <input type="checkbox"/> No		<input type="checkbox"/> Yes	
7. Structural inlet or outlet concern (crack, spalling, corrosion, pipe joint, etc.)	A,C	<input type="checkbox"/> Yes <input type="checkbox"/> No		<input type="checkbox"/> Yes	
8. Structural embankment concern (seeping, settling, slumping, roots, etc.)	A,C	<input type="checkbox"/> Yes <input type="checkbox"/> No		<input type="checkbox"/> Yes	
9. Structural spillway concern (dimensions, freeboard, unstable, leaking, etc.)	A,C	<input type="checkbox"/> Yes <input type="checkbox"/> No		<input type="checkbox"/> Yes	
10. Clogging or compaction concern (surface water > 72 hrs after > 0.5" rain)	R,M,B,A,C	<input type="checkbox"/> Yes <input type="checkbox"/> No		<input type="checkbox"/> Yes	
11. Surface storage concern (depth is not within 10% of design plan, etc.)	A,C	<input type="checkbox"/> Yes <input type="checkbox"/> No		<input type="checkbox"/> Yes	
12. Surface mulch or stone concern (mulch needed, etc.)	A,C	<input type="checkbox"/> Yes <input type="checkbox"/> No		<input type="checkbox"/> Yes	
13. Infiltration surface concern (animal burrow holes, infiltration bypass, etc.)	A,C	<input type="checkbox"/> Yes <input type="checkbox"/> No		<input type="checkbox"/> Yes	
14. Sediment accumulation concern (surface storage reduced by > 10%)	C	<input type="checkbox"/> Yes <input type="checkbox"/> No		<input type="checkbox"/> Yes	
15. Other (graffiti, illicit discharge, illegal dumping, etc.):		<input type="checkbox"/> Yes <input type="checkbox"/> No		<input type="checkbox"/> Yes	



Town of Vinland  
6085 County Road T  
Phone: 920.235.6953  
Oshkosh, WI 54904-9734

## STORMWATER MANAGEMENT SYSTEM INSPECTION, OPERATION, & MAINTENANCE FORM

Site or Subdivision Name:				Parcel ID:	
Site Address / Location:					
Inspection Frequency (check one): <input type="checkbox"/> > 0.5 Inch Rain (R) <input type="checkbox"/> Monthly (M) <input type="checkbox"/> Biannual (B) <input type="checkbox"/> Annual (A) <input type="checkbox"/> 5-Year Cycle (C) <input type="checkbox"/> Other					
Date of Inspection:		Inspector Name:		Maintenance Crew Leader Name:	
Maintenance Items – Proprietary Filtration Device (1010)	Frequency	Observed?	Inspector Comments	Maintenance Completed	
1. Debris & Litter – At inlets and outlets (grate, orifice, weir, pipe, filter, etc.)	R,M,B,A,C	<input type="checkbox"/> Yes <input type="checkbox"/> No		<input type="checkbox"/> Yes	
2. Debris & Litter – At other device locations (vegetation)	A,C	<input type="checkbox"/> Yes <input type="checkbox"/> No		<input type="checkbox"/> Yes	
3. Vegetation – Vegetation health or density concern (water, disease, etc.)	M,B,A,C	<input type="checkbox"/> Yes <input type="checkbox"/> No		<input type="checkbox"/> Yes	
4. Vegetation – Noxious weed or tree root concern (unauthorized planting, etc.)	A,C	<input type="checkbox"/> Yes <input type="checkbox"/> No		<input type="checkbox"/> Yes	
5. Wildlife – Burrow holes or other concern	A,C	<input type="checkbox"/> Yes <input type="checkbox"/> No		<input type="checkbox"/> Yes	
6. Erosion – Channel, rill, scour, or other erosion concern	A,C	<input type="checkbox"/> Yes <input type="checkbox"/> No		<input type="checkbox"/> Yes	
7. Structural inlet or outlet concern (crack, spalling, corrosion, joint, etc.)	A,C	<input type="checkbox"/> Yes <input type="checkbox"/> No		<input type="checkbox"/> Yes	
8. Structural wall or embankment concern (seeping, settling, failing, etc.)	A,C	<input type="checkbox"/> Yes <input type="checkbox"/> No		<input type="checkbox"/> Yes	
9. Structural spillway concern (dimensions, freeboard, unstable, leak, etc.)	A,C	<input type="checkbox"/> Yes <input type="checkbox"/> No		<input type="checkbox"/> Yes	
10. Pretreatment sediment accumulation concern (exceeds maximum allowed)	A,C	<input type="checkbox"/> Yes <input type="checkbox"/> No		<input type="checkbox"/> Yes	
11. Clogging or compaction concern (drain time or life exceeds max. allowed)	R,A,C	<input type="checkbox"/> Yes <input type="checkbox"/> No		<input type="checkbox"/> Yes	
12. Other (graffiti, illicit discharge, illegal dumping, etc.):		<input type="checkbox"/> Yes <input type="checkbox"/> No		<input type="checkbox"/> Yes	





Town of Vinland  
6085 County Road T  
Phone: 920.235.6953  
Oshkosh, WI 54904-9734

## STORMWATER MANAGEMENT SYSTEM INSPECTION, OPERATION, & MAINTENANCE FORM

Site or Subdivision Name:			Parcel ID:	
Site Address / Location:				
Inspection Frequency (check one): <input type="checkbox"/> > 0.5 Inch Rain (R) <input type="checkbox"/> Monthly (M) <input type="checkbox"/> Biannual (B) <input type="checkbox"/> Annual (A) <input type="checkbox"/> 5-Year Cycle (C) <input type="checkbox"/> Other				
Date of Inspection:		Inspector Name:		Maintenance Crew Leader Name:
Maintenance Items – Underground Detention	Frequency	Observed?	Inspector Comments	Maintenance Completed
1. Debris & Litter – At inlets and outlets (grate, orifice, weir, pipe, spillway, etc.)	R,M,B,A,C	<input type="checkbox"/> Yes <input type="checkbox"/> No		<input type="checkbox"/> Yes
2. Debris & Litter – At other device locations (open water)	A,C	<input type="checkbox"/> Yes <input type="checkbox"/> No		<input type="checkbox"/> Yes
3. Vegetation – Tree root or other concern (unauthorized planting, etc.)	A,C	<input type="checkbox"/> Yes <input type="checkbox"/> No		<input type="checkbox"/> Yes
4. Wildlife – Burrow holes or other concern	A,C	<input type="checkbox"/> Yes <input type="checkbox"/> No		<input type="checkbox"/> Yes
5. Erosion – Channel, rill, scour, or other erosion concern	A,C	<input type="checkbox"/> Yes <input type="checkbox"/> No		<input type="checkbox"/> Yes
6. Structural inlet or outlet concern (crack, spalling, corrosion, leaking, etc.)	A,C	<input type="checkbox"/> Yes <input type="checkbox"/> No		<input type="checkbox"/> Yes
7. Structural wall or embankment concern (seeping, settling, failing, etc.)	A,C	<input type="checkbox"/> Yes <input type="checkbox"/> No		<input type="checkbox"/> Yes
8. Structural spillway concern (dimensions, freeboard, unstable, leaking, etc.)	A,C	<input type="checkbox"/> Yes <input type="checkbox"/> No		<input type="checkbox"/> Yes
9. Structural liner concern (burrow hole, tree/shrub root, leak, etc.)	A,C	<input type="checkbox"/> Yes <input type="checkbox"/> No		<input type="checkbox"/> Yes
10. Pretreatment concern	A,C	<input type="checkbox"/> Yes <input type="checkbox"/> No		<input type="checkbox"/> Yes
11. Wet Detention - Sediment accumulation concern (PP water depth < 3.5 feet)	A,C	<input type="checkbox"/> Yes <input type="checkbox"/> No		<input type="checkbox"/> Yes
12. Dry Detention - Sediment accumulation concern (storage reduced by > 10%)	A,C	<input type="checkbox"/> Yes <input type="checkbox"/> No		<input type="checkbox"/> Yes
13. Other (graffiti, illicit discharge, illegal dumping, etc.):		<input type="checkbox"/> Yes <input type="checkbox"/> No		<input type="checkbox"/> Yes



Town of Vinland  
6085 County Road T  
Phone: 920.235.6953  
Oshkosh, WI 54904-9734

## STORMWATER MANAGEMENT SYSTEM INSPECTION, OPERATION, & MAINTENANCE FORM

Site or Subdivision Name:			Parcel ID:	
Site Address / Location:				
Inspection Frequency (check one): <input type="checkbox"/> > 0.5 Inch Rain (R) <input type="checkbox"/> Monthly (M) <input type="checkbox"/> Biannual (B) <input type="checkbox"/> Annual (A) <input type="checkbox"/> 5-Year Cycle (C) <input type="checkbox"/> Other				
Date of Inspection:		Inspector Name:		Maintenance Crew Leader Name:
Maintenance Items – Underground HDS or Catch Basin	Frequency	Observed?	Inspector Comments	Maintenance Completed
1. Debris & Litter – At inlets and outlets (grate, orifice, weir, pipe, spillway, etc.)	R,M,B,A,C	<input type="checkbox"/> Yes <input type="checkbox"/> No		<input type="checkbox"/> Yes
2. Debris & Litter – At other device locations (open water)	A,C	<input type="checkbox"/> Yes <input type="checkbox"/> No		<input type="checkbox"/> Yes
3. Vegetation – Tree root or other concern (unauthorized planting, etc.)	A,C	<input type="checkbox"/> Yes <input type="checkbox"/> No		<input type="checkbox"/> Yes
4. Wildlife – Burrow holes or other concern	A,C	<input type="checkbox"/> Yes <input type="checkbox"/> No		<input type="checkbox"/> Yes
5. Erosion – Channel, rill, scour, or other erosion concern	A,C	<input type="checkbox"/> Yes <input type="checkbox"/> No		<input type="checkbox"/> Yes
6. Structural inlet or outlet concern (crack, spalling, corrosion, leaking, etc.)	A,C	<input type="checkbox"/> Yes <input type="checkbox"/> No		<input type="checkbox"/> Yes
7. Structural wall or structure concern (seeping, settling, failing, etc.)	A,C	<input type="checkbox"/> Yes <input type="checkbox"/> No		<input type="checkbox"/> Yes
8. Sediment accumulation concern (PP water depth < 1.0 foot)	A,C	<input type="checkbox"/> Yes <input type="checkbox"/> No		<input type="checkbox"/> Yes
9. Other (graffiti, illicit discharge, illegal dumping, etc.):		<input type="checkbox"/> Yes <input type="checkbox"/> No		<input type="checkbox"/> Yes



Town of Vinland  
6085 County Road T  
Phone: 920.235.6953  
Oshkosh, WI 54904-9734

## STORMWATER MANAGEMENT SYSTEM INSPECTION, OPERATION, & MAINTENANCE FORM

Site or Subdivision Name:			Parcel ID:	
Site Address / Location:				
Inspection Frequency (check one): <input type="checkbox"/> > 0.5 Inch Rain (R) <input type="checkbox"/> Monthly (M) <input type="checkbox"/> Biannual (B) <input type="checkbox"/> Annual (A) <input type="checkbox"/> 5-Year Cycle (C) <input type="checkbox"/> Other				
Date of Inspection:		Inspector Name:		Maintenance Crew Leader Name:
Maintenance Items – Sand Filter	Frequency	Observed?	Inspector Comments	Maintenance Completed
1. Debris & Litter – At inlets and outlets (grate, orifice, weir, filter surface, etc.)	R,M,B,A,C	<input type="checkbox"/> Yes <input type="checkbox"/> No		<input type="checkbox"/> Yes
2. Debris & Litter – At other device locations (pretreatment)	A,C	<input type="checkbox"/> Yes <input type="checkbox"/> No		<input type="checkbox"/> Yes
3. Vegetation – Tree root or other concern (unauthorized planting, etc.)	A,C	<input type="checkbox"/> Yes <input type="checkbox"/> No		<input type="checkbox"/> Yes
4. Wildlife – Burrow holes or other concern	A,C	<input type="checkbox"/> Yes <input type="checkbox"/> No		<input type="checkbox"/> Yes
5. Erosion – Channel, rill, scour, or other erosion concern	A,C	<input type="checkbox"/> Yes <input type="checkbox"/> No		<input type="checkbox"/> Yes
6. Structural inlet or outlet concern (crack, spalling, corrosion, leaking, etc.)	A,C	<input type="checkbox"/> Yes <input type="checkbox"/> No		<input type="checkbox"/> Yes
7. Structural wall or structure concern (seeping, settling, failing, etc.)	A,C	<input type="checkbox"/> Yes <input type="checkbox"/> No		<input type="checkbox"/> Yes
8. Structural liner concern (burrow hole, tree/shrub root, leak, etc.)	A,C	<input type="checkbox"/> Yes <input type="checkbox"/> No		<input type="checkbox"/> Yes
9. Pretreatment concern	R,M,B,A,C	<input type="checkbox"/> Yes <input type="checkbox"/> No		<input type="checkbox"/> Yes
10. Clogging or compaction concern (surface water > 24 hrs after > 0.5" rain)	R,M,B,A,C	<input type="checkbox"/> Yes <input type="checkbox"/> No		<input type="checkbox"/> Yes
11. Clogging or compaction concern (subsurface water > 48 hrs after > 0.5" rain)	B,A,C	<input type="checkbox"/> Yes <input type="checkbox"/> No		<input type="checkbox"/> Yes
12. Sediment accumulation concern (storage reduced by > 10%)	C	<input type="checkbox"/> Yes <input type="checkbox"/> No		<input type="checkbox"/> Yes
13. Other (graffiti, illicit discharge, illegal dumping, etc.):		<input type="checkbox"/> Yes <input type="checkbox"/> No		<input type="checkbox"/> Yes



Town of Vinland  
6085 County Road T  
Phone: 920.235.6953  
Oshkosh, WI 54904-9734

## STORMWATER MANAGEMENT SYSTEM INSPECTION, OPERATION, & MAINTENANCE FORM

Site or Subdivision Name:				Parcel ID:	
Site Address / Location:					
Inspection Frequency (check one): <input type="checkbox"/> > 0.5 Inch Rain (R) <input type="checkbox"/> Monthly (M) <input type="checkbox"/> Biannual (B) <input type="checkbox"/> Annual (A) <input type="checkbox"/> 5-Year Cycle (C) <input type="checkbox"/> Other					
Date of Inspection:		Inspector Name:		Maintenance Crew Leader Name:	
Maintenance Items – Artificial Wetland	Frequency	Observed?	Inspector Comments	Maintenance Completed	
1. Debris & Litter – At inlets and outlets (grate, orifice, weir, pipe, spillway, etc.)	R,M,B,A,C	<input type="checkbox"/> Yes <input type="checkbox"/> No		<input type="checkbox"/> Yes	
2. Debris & Litter – At other device locations (open water, shoreline, vegetation)	A,C	<input type="checkbox"/> Yes <input type="checkbox"/> No		<input type="checkbox"/> Yes	
3. Vegetation – Vegetation health or density concern (water, disease, etc.)	M,B,A,C	<input type="checkbox"/> Yes <input type="checkbox"/> No		<input type="checkbox"/> Yes	
4. Vegetation – Noxious weed or tree root concern (unauthorized planting, etc.)	A,C	<input type="checkbox"/> Yes <input type="checkbox"/> No		<input type="checkbox"/> Yes	
5. Wildlife – Burrow holes, fish damage, animal paths, or other concern	A,C	<input type="checkbox"/> Yes <input type="checkbox"/> No		<input type="checkbox"/> Yes	
6. Erosion – Channel, rill, scour, shoreline, or other erosion concern	A,C	<input type="checkbox"/> Yes <input type="checkbox"/> No		<input type="checkbox"/> Yes	
7. Structural inlet or outlet concern (crack, spalling, corrosion, pipe joint, etc.)	A,C	<input type="checkbox"/> Yes <input type="checkbox"/> No		<input type="checkbox"/> Yes	
8. Structural liner concern (burrow hole, tree/shrub root, erosion, leak, etc.)	A,C	<input type="checkbox"/> Yes <input type="checkbox"/> No		<input type="checkbox"/> Yes	
9. Structural embankment concern (seeping, settling, slumping, roots, etc.)	R,M,B,A,C	<input type="checkbox"/> Yes <input type="checkbox"/> No		<input type="checkbox"/> Yes	
10. Structural spillway concern (dimensions, freeboard, unstable, leaking, etc.)	R,M,B,A,C	<input type="checkbox"/> Yes <input type="checkbox"/> No		<input type="checkbox"/> Yes	
11. Backflow preventor or flap gate concern (clogged, missing, etc.)	R,M,B,A,C	<input type="checkbox"/> Yes <input type="checkbox"/> No		<input type="checkbox"/> Yes	
12. If < 10,000 feet from airport, bird deterrent concern (large bird, etc.)	M,B,A,C	<input type="checkbox"/> Yes <input type="checkbox"/> No		<input type="checkbox"/> Yes	
13. Sediment accumulation concern (PP water depth < 3.5 feet)	C	<input type="checkbox"/> Yes <input type="checkbox"/> No		<input type="checkbox"/> Yes	
14. Other (graffiti, illicit discharge, illegal dumping, etc.):		<input type="checkbox"/> Yes <input type="checkbox"/> No		<input type="checkbox"/> Yes	



Town of Vinland  
6085 County Road T  
Phone: 920.235.6953  
Oshkosh, WI 54904-9734

## STORMWATER MANAGEMENT SYSTEM INSPECTION, OPERATION, & MAINTENANCE FORM

Site or Subdivision Name:				Parcel ID:	
Site Address / Location:					
Inspection Frequency (check one): <input type="checkbox"/> > 0.5 Inch Rain (R) <input type="checkbox"/> Monthly (M) <input type="checkbox"/> Biannual (B) <input type="checkbox"/> Annual (A) <input type="checkbox"/> 5-Year Cycle (C) <input type="checkbox"/> Other					
Date of Inspection:		Inspector Name:		Maintenance Crew Leader Name:	
<b>Maintenance Items – Vegetated Filter Strip</b>	<b>Frequency</b>	<b>Observed?</b>	<b>Inspector Comments</b>	<b>Maintenance Completed</b>	
1. Debris & Litter – At inlets and outlets (grate, level spreader, etc.)	R,M,B,A,C	<input type="checkbox"/> Yes <input type="checkbox"/> No		<input type="checkbox"/> Yes	
2. Debris & Litter – At other device locations (vegetation, filter surface)	A,C	<input type="checkbox"/> Yes <input type="checkbox"/> No		<input type="checkbox"/> Yes	
3. Vegetation – Vegetation health or density concern (water, disease, etc.)	M,B,A,C	<input type="checkbox"/> Yes <input type="checkbox"/> No		<input type="checkbox"/> Yes	
4. Vegetation – Noxious weed or tree root concern (unauthorized planting, etc.)	A,C	<input type="checkbox"/> Yes <input type="checkbox"/> No		<input type="checkbox"/> Yes	
5. Wildlife – Burrow holes, animal paths, or other concern	A,C	<input type="checkbox"/> Yes <input type="checkbox"/> No		<input type="checkbox"/> Yes	
6. Erosion – Channel, rill, scour, or other erosion concern	A,C	<input type="checkbox"/> Yes <input type="checkbox"/> No		<input type="checkbox"/> Yes	
7. Structural inlet or outlet concern (crack, spalling, corrosion, pipe joint, etc.)	A,C	<input type="checkbox"/> Yes <input type="checkbox"/> No		<input type="checkbox"/> Yes	
8. Structural embankment concern (seeping, settling, slumping, roots, etc.)	A,C	<input type="checkbox"/> Yes <input type="checkbox"/> No		<input type="checkbox"/> Yes	
9. Clogging or compaction concern (surface water > 48 hrs after > 0.5" rain)	R,M,B,A,C	<input type="checkbox"/> Yes <input type="checkbox"/> No		<input type="checkbox"/> Yes	
10. Mowing height concern (incorrect mowing height based on design, etc.)	M,B,A,C	<input type="checkbox"/> Yes <input type="checkbox"/> No		<input type="checkbox"/> Yes	
11. Sediment accumulation concern (surface or swale depth reduced by > 10%)	C	<input type="checkbox"/> Yes <input type="checkbox"/> No		<input type="checkbox"/> Yes	
12. Other (graffiti, illicit discharge, illegal dumping, etc.):		<input type="checkbox"/> Yes <input type="checkbox"/> No		<input type="checkbox"/> Yes	



Town of Vinland  
6085 County Road T  
Phone: 920.235.6953  
Oshkosh, WI 54904-9734

## STORMWATER MANAGEMENT SYSTEM INSPECTION, OPERATION, & MAINTENANCE FORM

Site or Subdivision Name:				Parcel ID:	
Site Address / Location:					
Inspection Frequency (check one): <input type="checkbox"/> > 0.5 Inch Rain (R) <input type="checkbox"/> Monthly (M) <input type="checkbox"/> Biannual (B) <input type="checkbox"/> Annual (A) <input type="checkbox"/> 5-Year Cycle (C) <input type="checkbox"/> Other					
Date of Inspection:		Inspector Name:		Maintenance Crew Leader Name:	
Maintenance Items – Green Roof		Frequency	Observed?	Inspector Comments	Maintenance Completed
1. Debris & Litter – At inlets and outlets (grate, level spreader, etc.)		R,M,B,A,C	<input type="checkbox"/> Yes <input type="checkbox"/> No		<input type="checkbox"/> Yes
2. Debris & Litter – At other device locations (vegetation, filter surface)		A,C	<input type="checkbox"/> Yes <input type="checkbox"/> No		<input type="checkbox"/> Yes
3. Vegetation concern (health, density, size, species, etc.)		M,B,A,C	<input type="checkbox"/> Yes <input type="checkbox"/> No		<input type="checkbox"/> Yes
4. Vegetation – Noxious weed or tree root concern (unauthorized planting, etc.)		A,C	<input type="checkbox"/> Yes <input type="checkbox"/> No		<input type="checkbox"/> Yes
5. Wildlife – Burrow holes or other concern		A,C	<input type="checkbox"/> Yes <input type="checkbox"/> No		<input type="checkbox"/> Yes
6. Erosion – Channel, rill, scour, or other erosion concern		A,C	<input type="checkbox"/> Yes <input type="checkbox"/> No		<input type="checkbox"/> Yes
7. Structural container or roof concern (seeping, settling, slumping, failing, etc.)		A,C	<input type="checkbox"/> Yes <input type="checkbox"/> No		<input type="checkbox"/> Yes
8. Clogging or compaction concern (surface water > 24 hrs after > 0.5" rain)		R,M,B,A,C	<input type="checkbox"/> Yes <input type="checkbox"/> No		<input type="checkbox"/> Yes
9. Surface mulch or stone concern (thickness more than ±1" of intended depth)		A,C	<input type="checkbox"/> Yes <input type="checkbox"/> No		<input type="checkbox"/> Yes
10. Surface storage concern (depth is not within 10% of design plan, etc.)		A,C	<input type="checkbox"/> Yes <input type="checkbox"/> No		<input type="checkbox"/> Yes
11. Other (graffiti, illicit discharge, illegal dumping, etc.):			<input type="checkbox"/> Yes <input type="checkbox"/> No		<input type="checkbox"/> Yes



Town of Vinland  
6085 County Road T  
Phone: 920.235.6953  
Oshkosh, WI 54904-9734

## STORMWATER MANAGEMENT SYSTEM INSPECTION, OPERATION, & MAINTENANCE FORM

Site or Subdivision Name:			Parcel ID:	
Site Address / Location:				
Inspection Frequency (check one): <input type="checkbox"/> > 0.5 Inch Rain (R) <input type="checkbox"/> Monthly (M) <input type="checkbox"/> Biannual (B) <input type="checkbox"/> Annual (A) <input type="checkbox"/> 5-Year Cycle (C) <input type="checkbox"/> Other				
Date of Inspection:		Inspector Name:		Maintenance Crew Leader Name:
Maintenance Items – Rain Barrel or Cistern	Frequency	Observed?	Inspector Comments	Maintenance Completed
1. Debris & Litter – At inlets and outlets (grate, downspout, pipe, etc.)	R,M,B,A,C	<input type="checkbox"/> Yes <input type="checkbox"/> No		<input type="checkbox"/> Yes
2. Debris & Litter – At other device locations (inside barrel or cistern)	A,C	<input type="checkbox"/> Yes <input type="checkbox"/> No		<input type="checkbox"/> Yes
3. Structural barrel, cistern, or liner concern (settling, leaking, failing, etc.)	A,C	<input type="checkbox"/> Yes <input type="checkbox"/> No		<input type="checkbox"/> Yes
4. Water use concern (water is not routinely used, reused, or drained)	R,M,B,A,C	<input type="checkbox"/> Yes <input type="checkbox"/> No		<input type="checkbox"/> Yes
5. Sediment accumulation concern (storage volume reduced by > 10%)	C	<input type="checkbox"/> Yes <input type="checkbox"/> No		<input type="checkbox"/> Yes
6. Other (graffiti, illicit discharge, illegal dumping, etc.):		<input type="checkbox"/> Yes <input type="checkbox"/> No		<input type="checkbox"/> Yes

## Operation & Maintenance Agreement



**Stormwater Management  
Practices Maintenance Agreement**

Document Number \_\_\_\_\_

THIS AGREEMENT, made and entered into this \_\_\_\_\_  
day of \_\_\_\_\_, 20\_\_ by and between  
\_\_\_\_\_, hereinafter called the "Owner"  
and **Winnebago County**, hereinafter called the "**County**".

WITNESSETH:

WHEREAS, the Owner is the owner of the following described  
lands situated in the Town of \_\_\_\_\_,  
Winnebago County, State of Wisconsin, to-wit:

*Full Legal Description (if lengthy, type see Attached Exhibit.  
exhibit must be labeled):*

Recording Area \_\_\_\_\_

Name and Return Address \_\_\_\_\_

Parcel Identification Number (PIN) \_\_\_\_\_

Hereinafter called the "Property".

This **is / is not** homestead property. \_\_\_\_\_

WHEREAS, the Owner is developing the Property; and

WHEREAS, the Site Plan identified as \_\_\_\_\_, hereinafter called the  
"Plan", which is expressly made a part of hereof, as approved or to be approved by the **County**, provides for  
on-site stormwater management practices within the confines of the Property; and

WHEREAS, the **County** and the Owner, its successors and assigns, including any homeowners  
association, agree that the health, safety and welfare of the residents of the Town of \_\_\_\_\_  
require that the on-site stormwater management practices as defined in Wisconsin Administrative Code NR  
151, and the **Winnebago County** Stormwater Ordinance be constructed and maintained in perpetuity on the  
Property; and

WHEREAS, the **County** requires that on-site stormwater management practices as shown on the  
Plan be constructed and adequately maintained by the Owner, its successors and assigns, including any  
homeowners association.

NOW, THEREFORE, in consideration of the foregoing premises, the mutual covenants contained  
herein, and the following terms and conditions, the parties hereto agree as follows:

1. The Owner, its successors and assigns, in accordance with the plans and specifications  
identified in the Plan, shall construct the on-site stormwater management practices. Following  
construction, **County** approved construction documentation and "as-builts" of the Property  
shall be recorded with the Winnebago County Register of Deeds.
2. The Owner, its successors and assigns, including homeowners association, shall adequately  
maintain the stormwater management practices, including, but not limited to, all pipes, swales,  
and channels built to convey stormwater to and from the facilities, as well as all structures,

improvements (including grading/drainage patterns) and vegetation provided to control the quantity and quality of the stormwater. Adequate maintenance is herein defined as keeping the stormwater management facilities in good working condition so that these facilities are performing their design functions and are in accordance with the Operation and Maintenance Plan attached to this agreement as Exhibit **A** and by this reference made a part hereof. The Operation and Maintenance Plan may be periodically updated by the County.

3. The Owner, its successors and assigns, shall regularly inspect the stormwater management practices as often as conditions require, but in any event at least twice each year. The standard Operation and Maintenance Report attached to this Agreement as Exhibit **B** and by this reference made a part hereof shall be used for the purpose of the regular inspections of the stormwater management practices. This report form may be periodically updated by the **County**. The Owner, successors and assigns shall keep the Operation and Maintenance Reports from past inspections as well as a log of maintenance activity indicating the date and type of maintenance completed and provide copies of the reports and log to the **County** annually. The reports and maintenance logs shall be made available to the **County** for review upon request. The purpose of the inspections is to assure safe and proper functioning of the facilities. The inspections shall cover all facilities including, but not limited to, berms, outlet structures, pond areas and access roads. Deficiencies shall be noted in the Operation and Maintenance Report.
4. The Owner, its successors and assigns, hereby grants permission to the **County**, its authorized agents and employees, to enter upon the Property and to inspect the stormwater management practices whenever the **County** deems necessary. The purpose of inspection is to investigate reported deficiencies, to respond to citizen complaints, or verify maintenance of on-site stormwater management practices. The **County** shall provide the Owner, its successors and assigns, copies of the inspection findings and a directive to commence with the repairs if necessary. Corrective actions shall be taken within a reasonable time frame as established by the **County**.
5. If the Owner, its successors and assigns, fails to maintain the stormwater management practices in good working condition acceptable to the **County** and does not perform the required corrective actions in the specified time, the **County** may:
  - a. Issue a citation to the Owner, its successors and assigns. The penalty for violation of this section shall be not less than fifty dollars (\$50.00) nor more than five hundred dollars (\$500.00) for each offense, together with the costs of prosecution. Each day that the violation exists shall constitute a separate offense, and
  - b. Perform the corrective actions identified in the inspection report and assess the Owner, its successors and assigns for the cost of such work. The cost of such work shall be specially assessed against the Property. If the facilities are located on an outlot owned collectively, the **County** may assess each owner according to ownership interest in the facilities located on the Property. The provision shall not be construed to allow the **County** to erect any structure of permanent nature on the land of the Owner outside of the easement for the stormwater management practices. It is expressly understood and agreed that the **County** is under no obligation to routinely maintain or repair said stormwater management practices, and in no event shall this Agreement be construed to impose any such obligation on the **County**.
6. The Owner, its successors and assigns, will perform the work necessary to keep these facilities in good working order as appropriate. In the event a maintenance schedule for the stormwater management practices (including sediment removal) is outlined in the Operation and Maintenance Plan, the schedule will be followed.

7. This Maintenance Agreement may be modified by the sole approval of the **County**. The modification date shall be the date the modified Maintenance Agreement is recorded with the **Winnebago County** Register of Deeds, as a property deed restriction so that the modified agreement is binding upon all subsequent owners of the land served by the stormwater management practices.
8. In the event the **County** pursuant to this Agreement, performs the work of any nature, or expends any funds in performance of said work for labor, use of equipment, supplies, materials, and the like, the Owner, its successors and assigns, shall reimburse the **County** upon demand, within thirty (30) days of receipt thereof for all actual costs incurred by the **County** hereunder. Failure of the Owner to make payment within thirty (30) days shall result in the amount plus any interest thereupon being added to the tax roll and collected as a special charge against the property.
9. This Agreement imposes no liability of any kind whatsoever on the **County** and the Owner agrees to hold the **County** harmless from any liability in the event the stormwater management practices fail to operate properly.
10. This Agreement shall be attached as an exhibit to any document which creates a homeowners association that is responsible for maintenance of the stormwater management practices and be recorded at the **Winnebago County** Register of Deeds, and shall constitute a covenant running with the land, and shall be binding on the Owner, its administrators, executors, assigns, heirs and any other successors in interests, including any homeowners association. The Owner shall provide the **County** with a copy of any document, which creates a homeowners association that is responsible for the stormwater management practices.
11. Upon receipt of the executed Maintenance Agreement, the Owner shall record said agreement in the Office of the Register of Deeds. The Owner shall provide a copy of the recorded Maintenance Agreement with applicable attachments to the County.

[SIGNATURES BEGIN ON THE FOLLOWING PAGE]

WITNESS the following signatures and seals:

Owner Name:

By: \_\_\_\_\_  
(Signature)

\_\_\_\_\_  
(Date)

Printed Name:

Title:

STATE OF WISCONSIN     )  
                                     : ss.  
COUNTY                     )

The foregoing Agreement was acknowledged  
before me this \_\_\_\_\_ day of  
\_\_\_\_\_ 20 \_\_\_\_

by \_\_\_\_\_  
(name of Owner)

\_\_\_\_\_  
(Notary Signature)

\_\_\_\_\_  
(Notary Print Name)

Notary Public, State of Wisconsin

My commission expires/is  
permanent \_\_\_\_\_, 20\_\_\_\_.

Owner Name:

By: \_\_\_\_\_  
(Signature)

\_\_\_\_\_  
(Date)

Printed Name:

Title:

STATE OF WISCONSIN     )  
                                     : ss.  
COUNTY                     )

The foregoing Agreement was acknowledged  
before me this \_\_\_\_\_ day of  
\_\_\_\_\_ 20 \_\_\_\_

by \_\_\_\_\_  
(name of Owner)

\_\_\_\_\_  
(Notary Signature)

\_\_\_\_\_  
(Notary Print Name)

Notary Public, State of Wisconsin

My commission expires/is  
permanent \_\_\_\_\_, 20\_\_\_\_.

This instrument was drafted by \_\_\_\_\_.

## APPENDIX C

---

Plan Set or Drawings