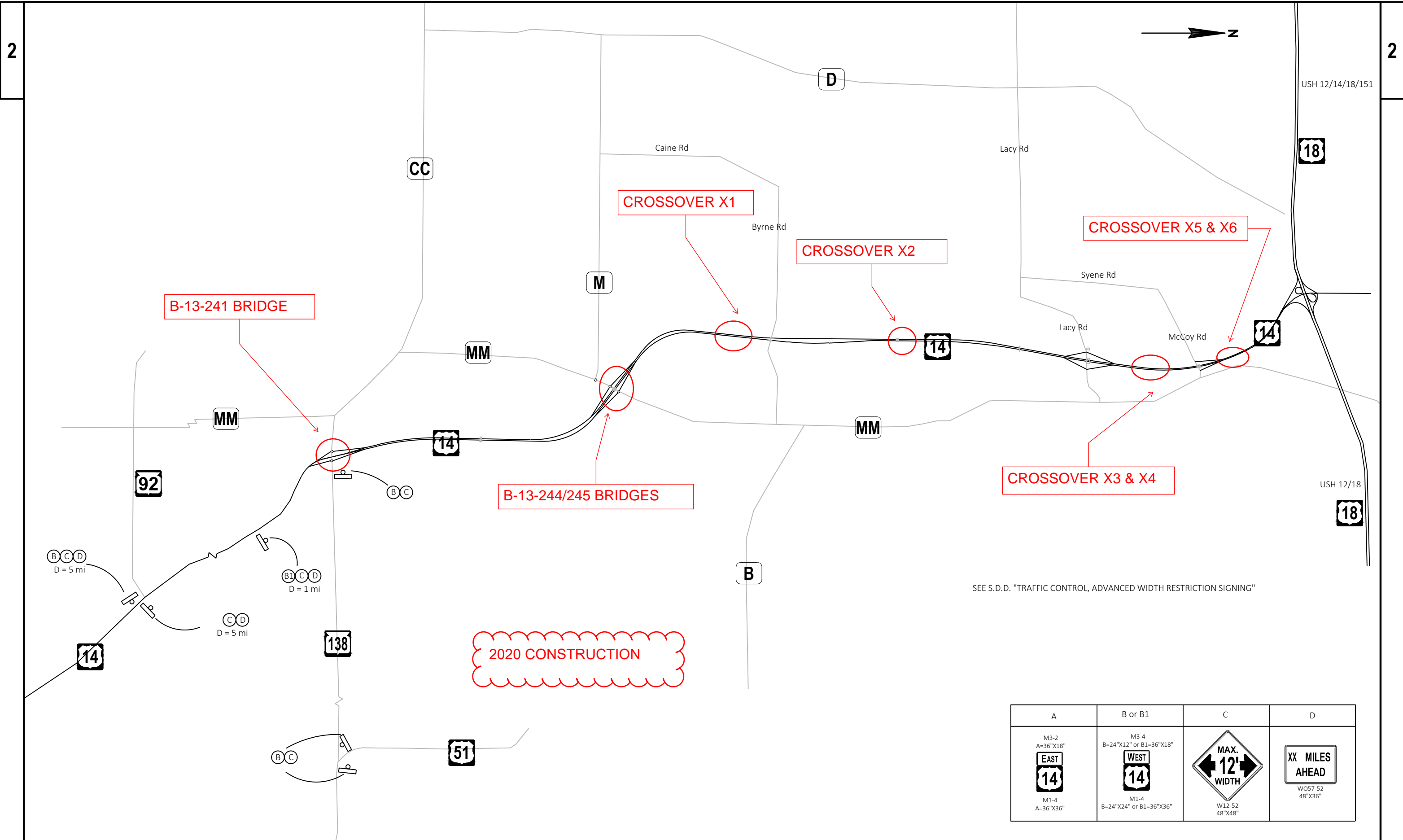






PROJECT NO: 5155-02-83	HWY: USH 14	COUNTY: DANE	PROJECT OVERVIEW	SHEET	E
------------------------	-------------	--------------	------------------	-------	---



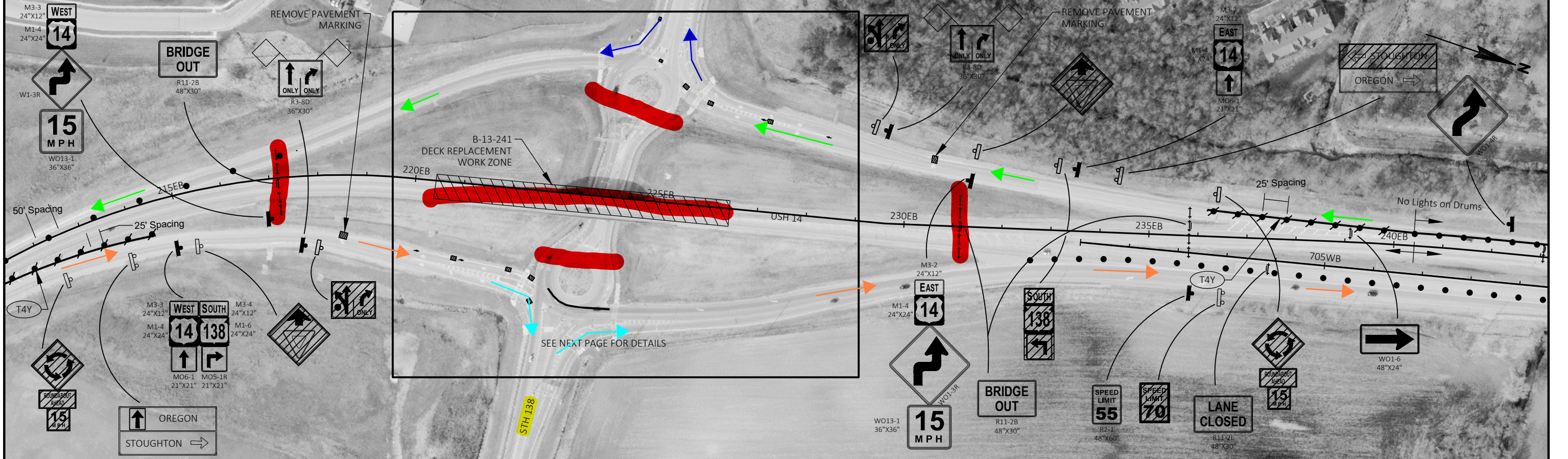
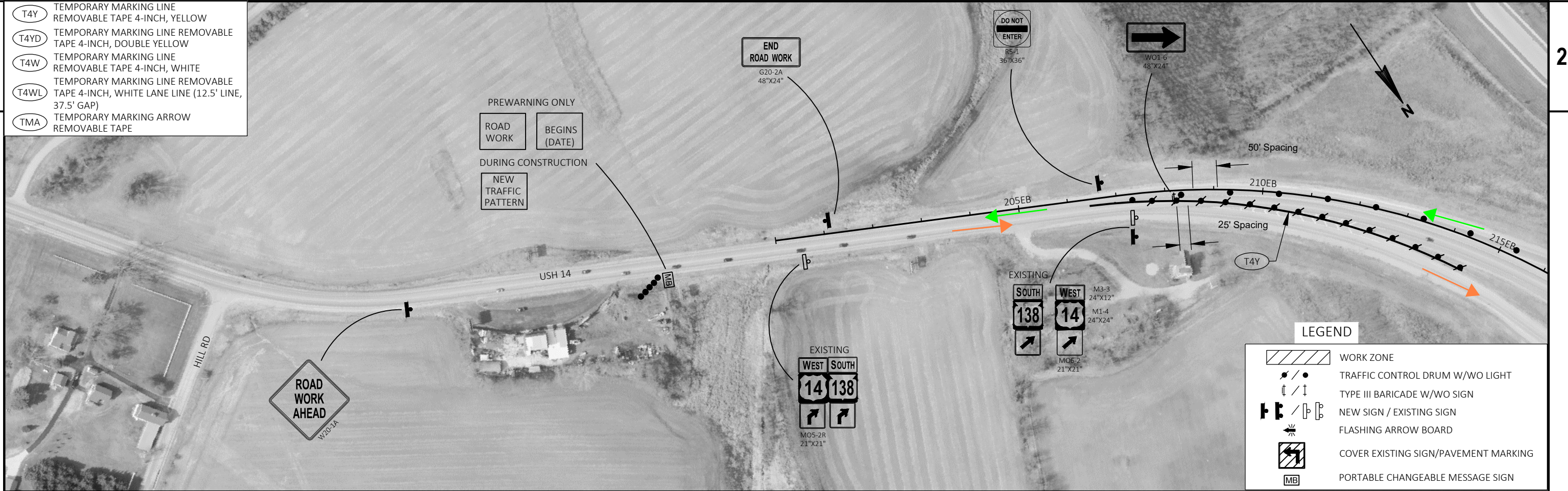
SEE S.D.D. "TRAFFIC CONTROL, ADVANCED WIDTH RESTRICTION SIGNING"

A	B or B1	C	D
M3-2 A=36"x18"  EAST 14	M3-4 B=24"x12" or B1=36"x18"  WEST 14	 MAX. 12' WIDTH	 XX MILES AHEAD
M1-4 A=36"x36"	M1-4 B=24"x24" or B1=36"x36"	W12-52 48"x48"	W057-52 48"x36"

- (T4Y) TEMPORARY MARKING LINE
REMOVABLE TAPE 4-INCH, YELLOW
- (T4YD) TEMPORARY MARKING LINE REMOVABLE
TAPE 4-INCH, DOUBLE YELLOW
- (T4W) TEMPORARY MARKING LINE
REMOVABLE TAPE 4-INCH, WHITE
- (T4WL) TEMPORARY MARKING LINE REMOVABLE
TAPE 4-INCH, WHITE LANE LINE (12.5' LINE,
37.5' GAP)
- (TMA) TEMPORARY MARKING ARROW
REMOVABLE TAPE

PREWARNING ONLY
ROAD WORK BEGINS (DATE)

DURING CONSTRUCTION
NEW TRAFFIC PATTERN

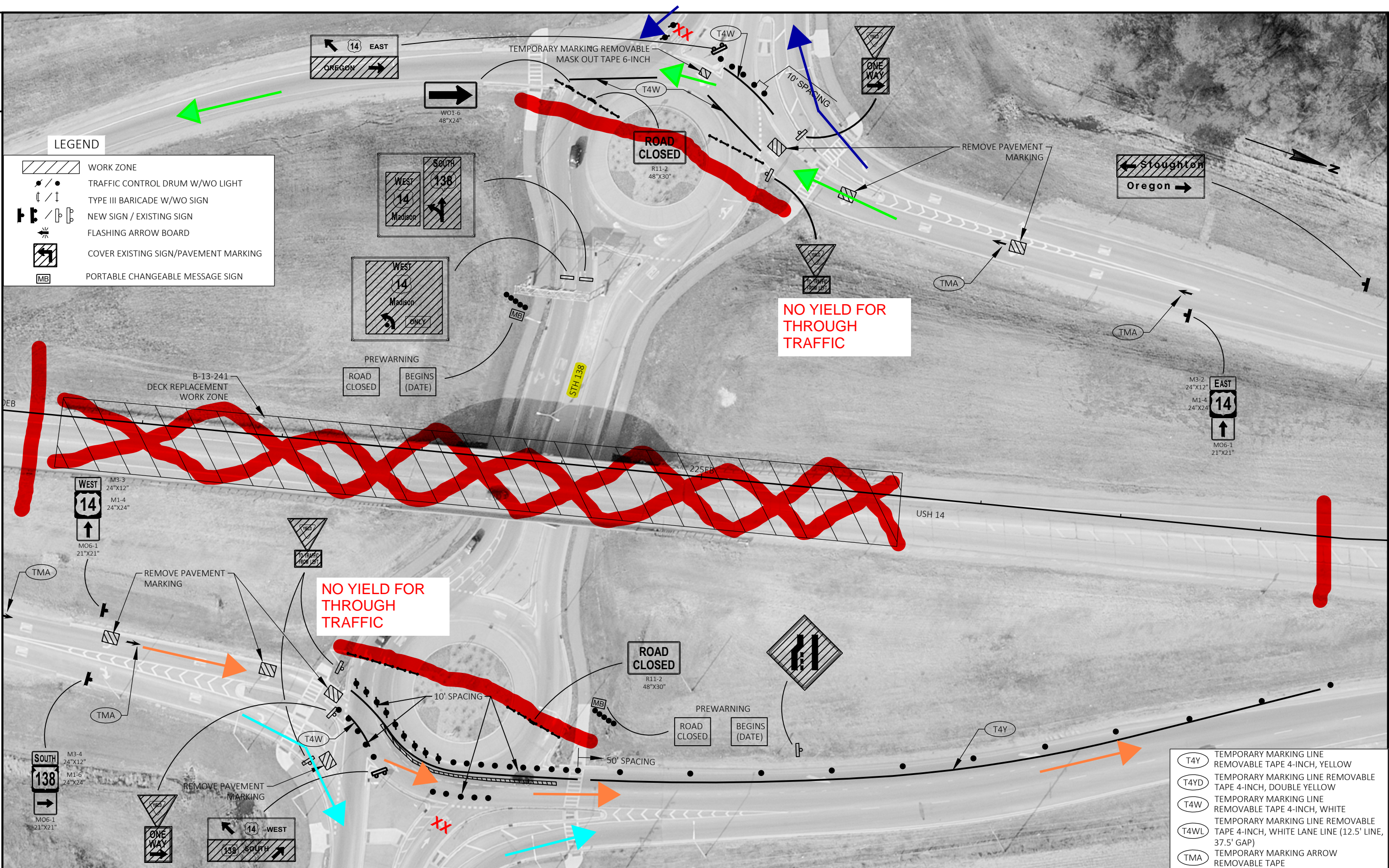


LEGEND

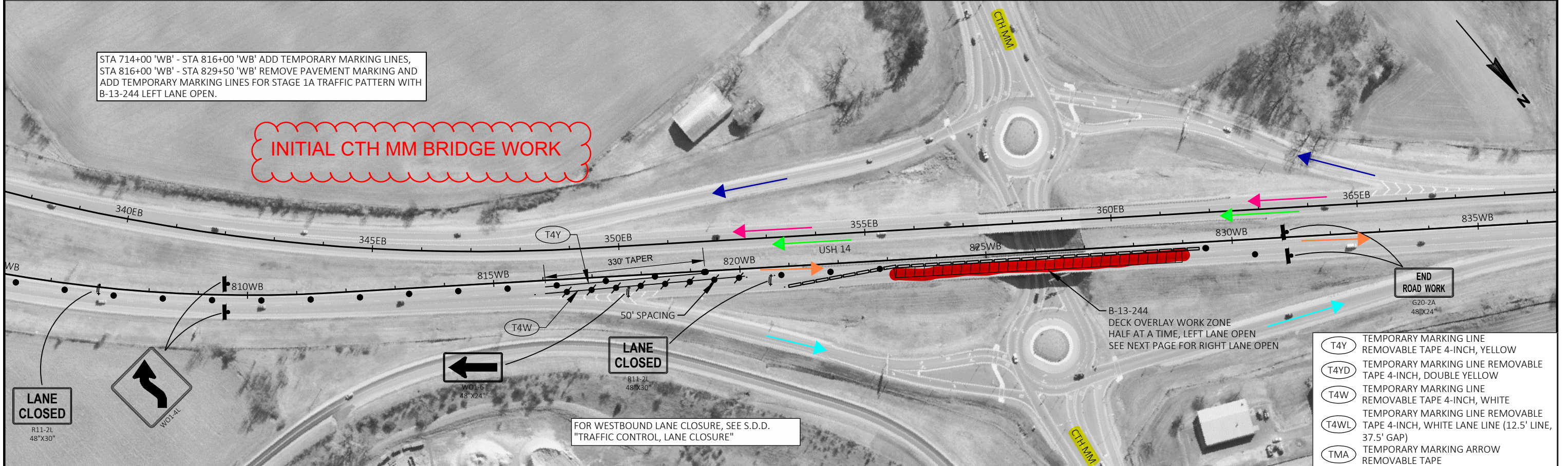
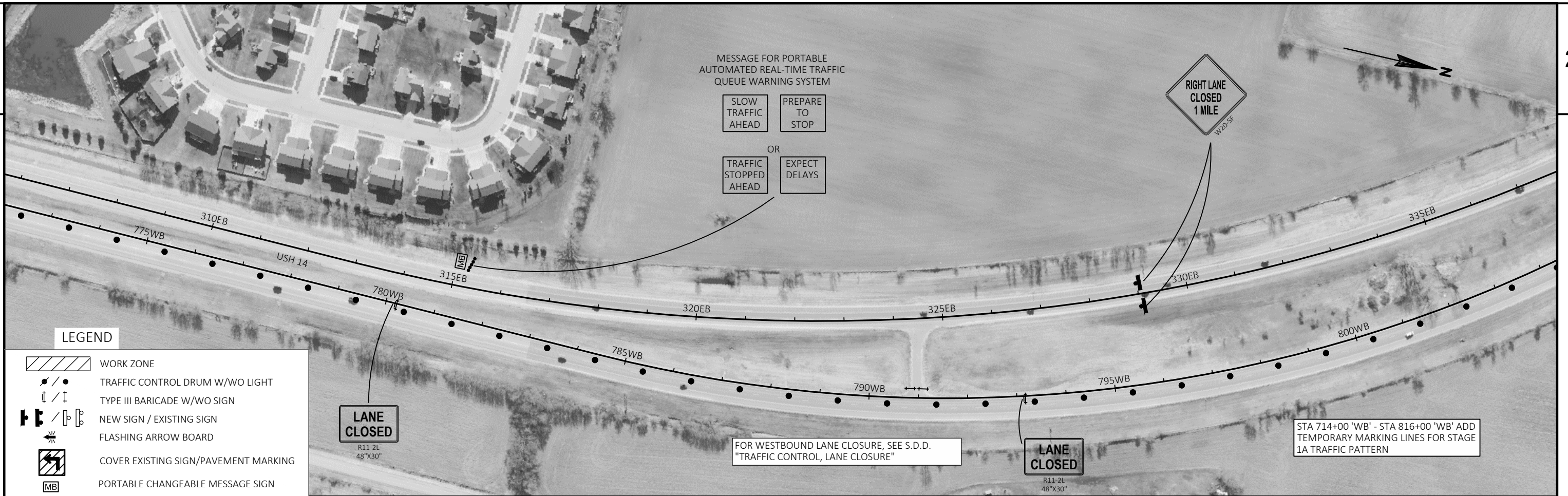
- WORK ZONE
- TRAFFIC CONTROL DRUM W/WO LIGHT
- TYPE III BARICADE W/WO SIGN
- NEW SIGN / EXISTING SIGN
- FLASHING ARROW BOARD
- COVER EXISTING SIGN/PAVEMENT MARKING
- PORTABLE CHANGEABLE MESSAGE SIGN

LEGEND

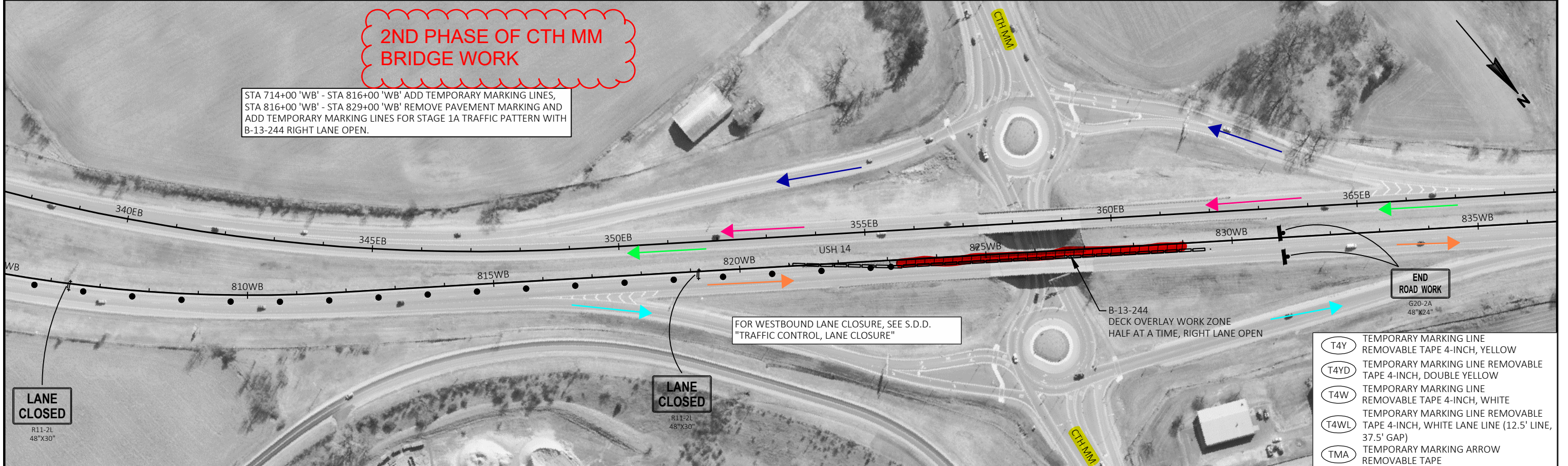
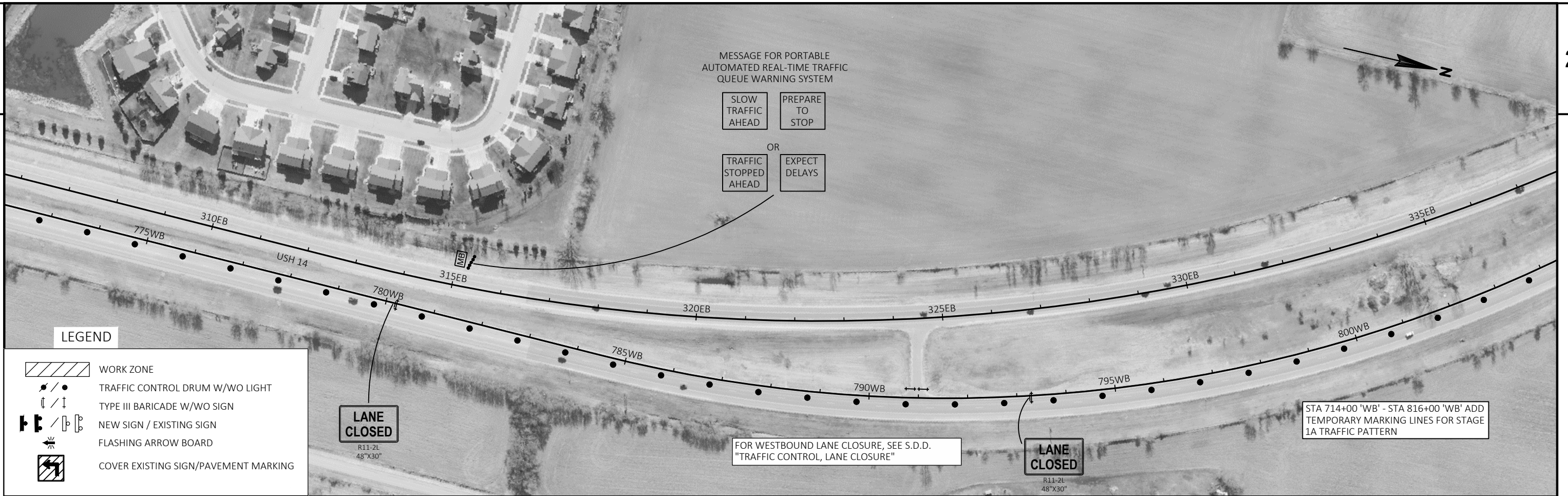
- WORK ZONE
- TRAFFIC CONTROL DRUM W/WO LIGHT
- TYPE III BARICADE W/WO SIGN
- NEW SIGN / EXISTING SIGN
- FLASHING ARROW BOARD
- COVER EXISTING SIGN/PAVEMENT MARKING
- PORTABLE CHANGEABLE MESSAGE SIGN



- T4Y TEMPORARY MARKING LINE REMOVABLE TAPE 4-INCH, YELLOW
- T4YD TEMPORARY MARKING LINE REMOVABLE TAPE 4-INCH, DOUBLE YELLOW
- T4W TEMPORARY MARKING LINE REMOVABLE TAPE 4-INCH, WHITE
- T4WL TEMPORARY MARKING LINE REMOVABLE TAPE 4-INCH, WHITE LANE LINE (12.5' LINE, 37.5' GAP)
- TMA TEMPORARY MARKING ARROW REMOVABLE TAPE


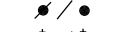
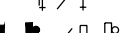
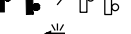








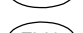
PROJECT NO: 5155-02-83	HWY: USH 14	COUNTY: DANE	TRAFFIC CONTROL - STAGE 1A - LEFT LANE OPEN	SHEET	E
------------------------	-------------	--------------	---	-------	---



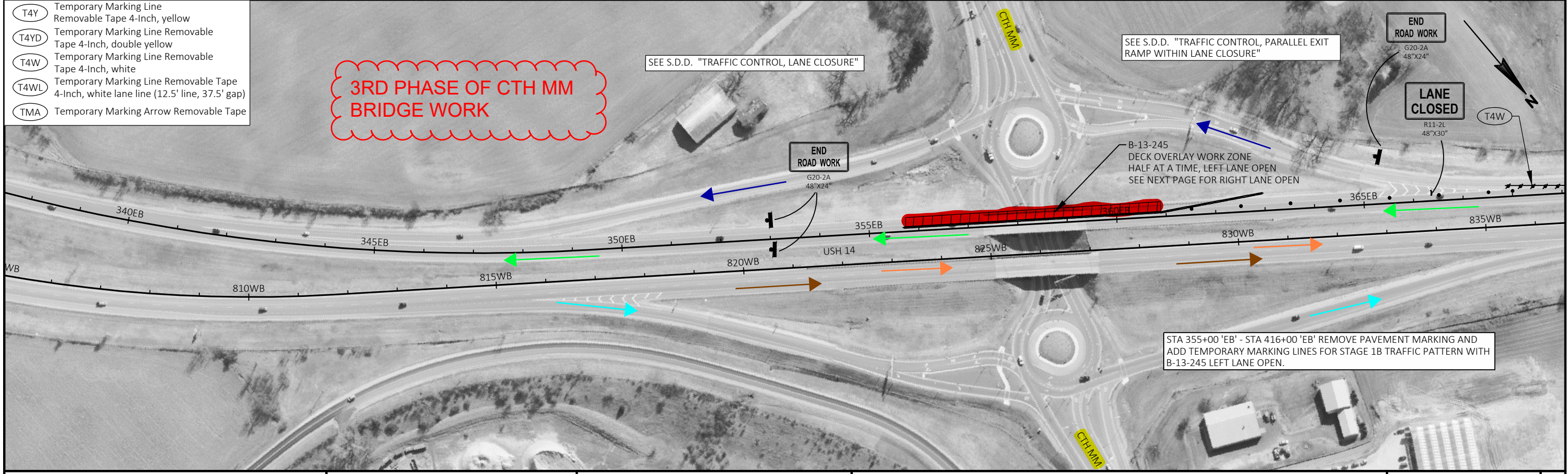


LEGEND

-  WORK ZONE
-  TRAFFIC CONTROL DRUM W/WO LIGHT
-  TYPE III BARRICADE W/WO SIGN
-  NEW SIGN / EXISTING SIGN
-  FLASHING ARROW BOARD
-  COVER EXISTING SIGN/PAVEMENT MARKING

-  Temporary Marking Line Removable Tape 4-Inch, yellow
-  Temporary Marking Line Removable Tape 4-Inch, double yellow
-  Temporary Marking Line Removable Tape 4-Inch, white
-  Temporary Marking Line Removable Tape 4-Inch, white lane line (12.5' line, 37.5' gap)
-  Temporary Marking Arrow Removable Tape

3RD PHASE OF CTH MM BRIDGE WORK





LEGEND

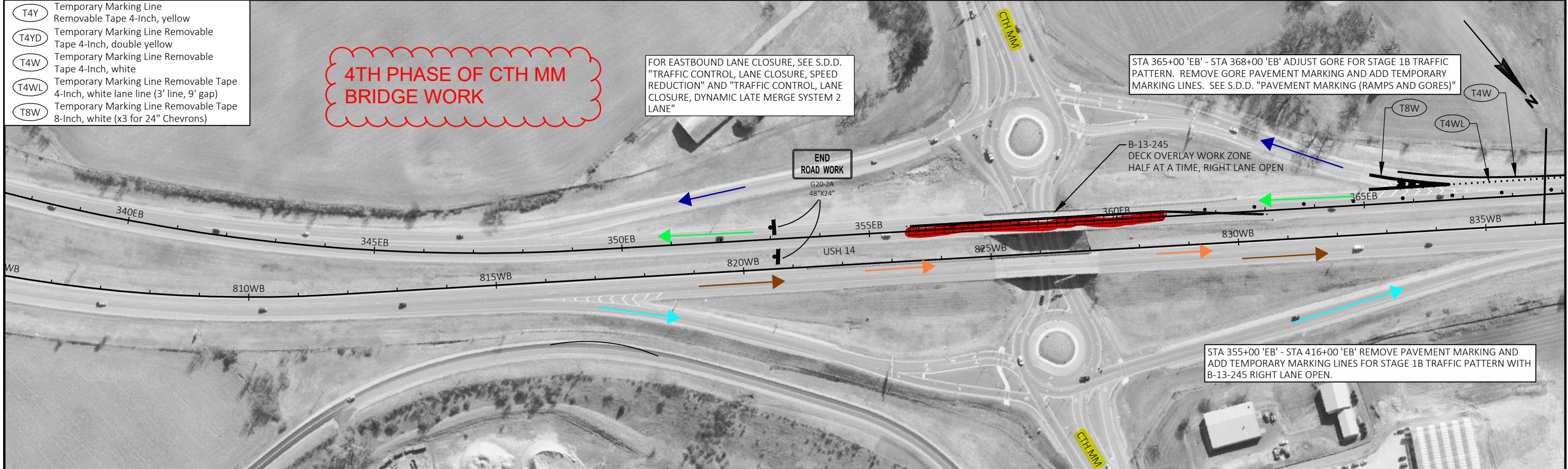
- WORK ZONE
- TRAFFIC CONTROL DRUM W/WO LIGHT
- TYPE III BARRICADE W/WO SIGN
- NEW SIGN / EXISTING SIGN
- FLASHING ARROW BOARD
- COVER EXISTING SIGN/PAVEMENT MARKING

- Temporary Marking Line Removable Tape 4-Inch, yellow
- Temporary Marking Line Removable Tape 4-Inch, double yellow
- Temporary Marking Line Removable Tape 4-Inch, white
- Temporary Marking Line Removable Tape 4-Inch, white lane line (3' line, 9' gap)
- Temporary Marking Line Removable Tape 8-Inch, white (x3 for 24" Chevrons)

4TH PHASE OF CTH MM BRIDGE WORK


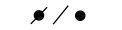
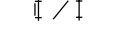



FOR EASTBOUND LANE CLOSURE, SEE S.D.D. "TRAFFIC CONTROL, LANE CLOSURE, SPEED REDUCTION" AND "TRAFFIC CONTROL, LANE CLOSURE, DYNAMIC LATE MERGE SYSTEM 2 LANE"

STA 365+00 'EB' - STA 368+00 'EB' ADJUST GORE FOR STAGE 1B TRAFFIC PATTERN. REMOVE GORE PAVEMENT MARKING AND ADD TEMPORARY MARKING LINES. SEE S.D.D. "PAVEMENT MARKING (RAMPS AND GORES)"



STA 355+00 'EB' - STA 416+00 'EB' REMOVE PAVEMENT MARKING AND ADD TEMPORARY MARKING LINES FOR STAGE 1B TRAFFIC PATTERN WITH B-13-245 RIGHT LANE OPEN.

LEGEND

-  WORK ZONE
-  TRAFFIC CONTROL DRUM W/WO LIGHT
-  TYPE III BARICADE W/WO SIGN
-  NEW SIGN / EXISTING SIGN
-  FLASHING ARROW BOARD
-  COVER EXISTING SIGN/PAVEMENT MARKING

Hwy 138
Closed
Use Alt Route

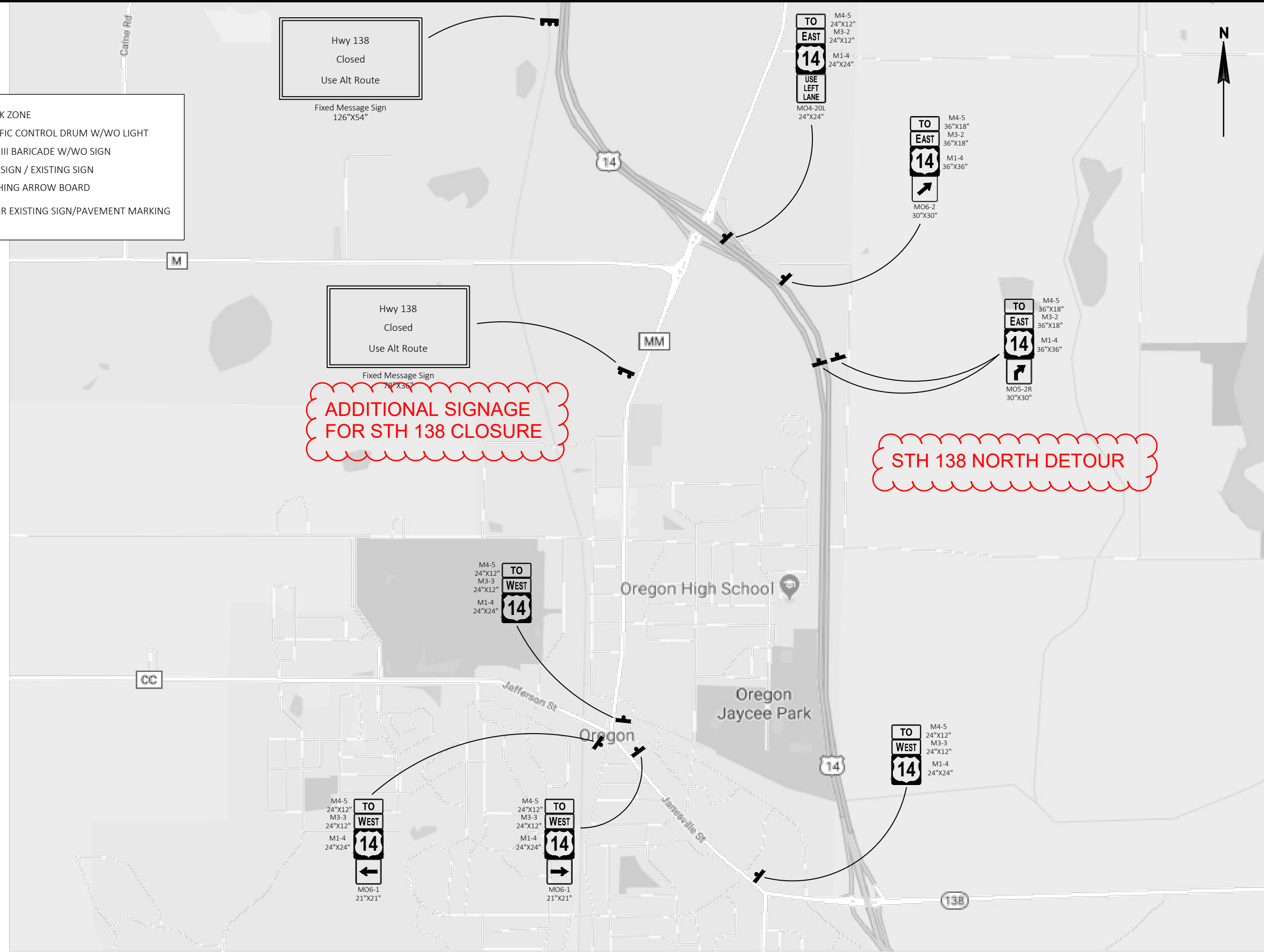
Fixed Message Sign
126"x54"

Hwy 138
Closed
Use Alt Route

Fixed Message Sign
78"x36"

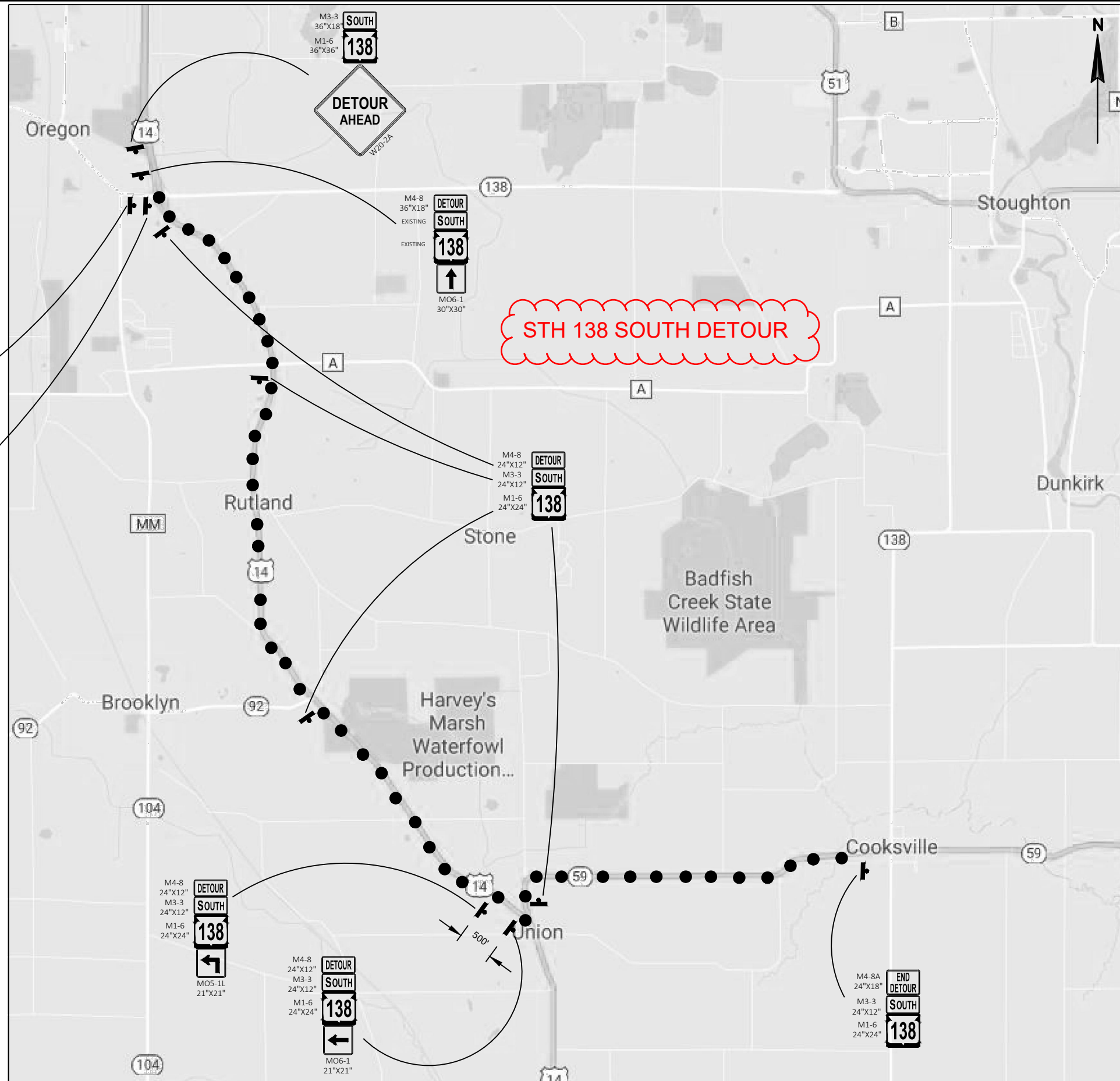
ADDITIONAL SIGNAGE
FOR STH 138 CLOSURE

STH 138 NORTH DETOUR



LEGEND

- DETOUR ROUTE
- EXISTING SIGN
- NEW SIGN
- COVER EXISTING SIGN
- NEW SIGN SINGLE/DOUBLE POST
- EXISTING SIGN SINGLE/DOUBLE POST
- BARRICADE WITH/WITHOUT SIGN



M3-3 24"x12"
M1-6 24"x24"
SOUTH 138
DETOUR AHEAD
W20-2A

M4-8 24"x12"
M3-3 24"x12"
M1-6 24"x24"
DETOUR SOUTH 138
MO6-1 21"x21"

M4-8 24"x12"
M3-3 24"x12"
M1-6 24"x24"
DETOUR SOUTH 138
MO5-1L 21"x21"

M4-8 24"x12"
M3-3 24"x12"
M1-6 24"x24"
DETOUR SOUTH 138
MO6-1 21"x21"

M4-8 36"x18"
EXISTING
DETOUR SOUTH 138
MO6-1 30"x30"

STH 138 SOUTH DETOUR

M4-8 24"x12"
M3-3 24"x12"
M1-6 24"x24"
DETOUR SOUTH 138

M4-8A 24"x18"
M3-3 24"x12"
M1-6 24"x24"
END DETOUR SOUTH 138