

**Notice of Spring Election and
Sample Ballots**

Tuesday, April 4, 2023

City of Evansville, Town of Center, Town of Porter, and Town of Union

To the voters of Rock County:

Notice is hereby given of a spring election to be held in Rock County on Tuesday, April 4, 2023, at which the officers named below shall be nominated. The names of the candidates for each office, whose nominations have been certified to or filed in this office, are given under the title of the office, each in its proper column, together with the questions submitted to a vote, for a referendum, if any, in the sample ballot below.

Information to Voters

Upon entering the polling place and before being permitted to vote, a voter shall:

- state their name and address
- show an acceptable form of photo identification*
- sign the poll book**

***If a voter does not have acceptable photo identification, the voter may obtain a free photo ID for voting from the Division of Motor Vehicles.**

****If the voter is unable to sign the poll book due to disability, a poll worker may write the word "exempt."**

If a voter is not registered to vote, they may register to vote at the polling place serving their residence if the voter provides proof of residence.

Where ballots are distributed to voters, the initials of two inspectors must appear on the ballot.

Upon being permitted to vote, the voter shall enter a voting booth or go to a machine and cast their ballot. The vote should not be cast in any manner other than specified here. Sample ballots or other materials to assist the voter in marking their ballot may be taken into the booth and copied. The sample ballot shall not be shown to anyone so as to reveal how the ballot is marked.

A voter who is a parent or guardian may be accompanied by the voter's minor child or minor ward.

An election official may inform the voter of the proper manner for casting a vote but the official may not advise or indicate a particular voting choice.

Assistance for Voting

A voter may select an individual to assist in casting their vote if the voter declares to the presiding official that they are unable to read, have difficulty reading, writing, or understanding English, or that due to disability are unable to cast their ballot. The selected individual rendering assistance may not be the voter's employer or an agent of that employer or an officer or agent of a labor organization which represents the voter.

Where Paper Ballots are Used

The voter shall make a mark (X) in the square next to the name of the candidate of their choice for each office for which they intend to vote. To vote for a person whose name does not appear on the ballot, the voter shall write in the name of the person of their choice in the space provided for a write-in vote. On referendum questions, the voter shall make a mark (X) in the square next to "yes" if in favor of the question, or the voter shall make a mark (X) in the square next to "no" if opposed to the question.

Where Optical Scan Voting is Used

The voter shall fill in the oval or connect the arrow next to the name of the candidate of their choice for each office for which they intend to vote. To vote for a person whose name does not appear on the ballot, the voter shall write in the name of the person of their choice in the space provided for a write-in vote and fill in the oval or connect the arrow next to the write-in line. On referendum questions, the voter shall fill in the oval or connect the arrow next to "yes" if in favor of the question, or the voter shall fill in the oval or connect the arrow next to "no" if opposed to the question.

When using an *electronic ballot marking device* ("Automark," "ExpressVote," "Clear Access" or "ImageCast Evolution-ICE") to mark an **optical scan ballot**, the voter shall touch the screen or use the tactile pad to select the name of the candidate of his or her choice for each office for which he or she intends to vote. To vote for a person whose name does not appear on the ballot, the voter shall type in the name of the person of his or her choice in the space provided for a write-in vote. On referendum questions, the voter shall touch the screen or use the tactile pad to select "yes" if in favor of the question, or the voter shall touch the screen or use the tactile pad to select "no" if opposed to the question.

Where Touch Screen Voting is Used

The voter shall touch the screen or use the tactile pad to select the name of the candidate of their choice for each office for which they intend to vote. To vote for a person whose name does not appear on the ballot, the voter shall type in the name of the person of their choice in the space provided for a write-in vote. On referendum questions, the voter shall touch the screen at "yes" if in favor of the question, or the voter shall touch the screen at "no" if opposed to the question.

After Voting the Ballot

After an official **paper ballot** is marked, it shall be folded so the inside marks do not show, but so the printed endorsements and inspectors' initials on the outside do show. The voter shall deposit the voted ballot in the ballot box or deliver the ballot to an inspector for deposit and shall leave the polling place promptly.

After an official **optical scan ballot** is marked, it shall be inserted in the security sleeve, so the

marks do not show. The voter may insert the ballot in the voting device and discard the sleeve or deliver the ballot to an inspector for deposit. If a central count system is used, the voter shall insert the ballot in the ballot box and discard the sleeve or deliver the ballot to an inspector for deposit. The voter shall leave the polling place promptly.

After an official **touch screen ballot** is cast, the voter shall leave the polling place promptly.

Spoiling Ballots

If a voter spoils a **paper or optical scan** ballot, they shall return it to an election official who shall issue another ballot in its place, but not more than three ballots shall be issued to any one voter. If the ballot has not been initialed by two inspectors or is defective in any other way, the voter shall return it to the election official who shall issue a proper ballot in its place.

The voter may spoil a **touch screen** ballot at the voting station before the ballot is cast.

The following is a sample of the official ballot:

City of Evansville **Monday – Friday, 8:00 a.m. – 4:30 p.m.**, (8:00 a.m. – 5:00 p.m. on March 31st)
31 S Madison Street, Evansville, WI 53536 (608) 882-2266, ext 2 Leah Hurtley, City Clerk

Town of Center **By Appointment Only**, 7416 W. Mineral Point Road, Janesville, WI 53548
(608) 876-6265 Devona Udulutch, Town Clerk

Town of Porter **By Appointment Only**, 9219 N. Tolles Rd. Evansville, WI 53536,
(608) 201-1996 Anne Remley-Haines, Town Clerk

Town of Union **By Appointment Only**, 15531 W Green Bay Rd, Evansville, WI 53536
(608) 736-7070 Regina Riedel, Town Clerk

(Notes: Use with paper ballots, optical scan and touch screen voting systems. Includes Vote-PAD, Automark, Clear Access, Express Vote or ImageCast Evolution-ICE instructions. Delete any language or paragraphs that do not apply to your election or type of voting system.

Clerks publish the Type B Notice the Monday before an election. When voting is equipment used, the notice shall include all offices and questions to be voted on at the election. The cost of this notice shall be shared §10.06(3)(e).)

Official Ballot

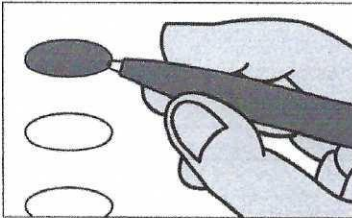
Nonpartisan Office and Referendum

April 4, 2023

S10

Notice to Voters: If you are voting on Election Day, your ballot must be initialed by two (2) election inspectors. If you are voting absentee, your ballot must be initialed by the municipal clerk or deputy clerk. Your ballot may not be counted without initials (see end of ballot for initials).

General Instructions



If you make a mistake on your ballot or have a question, ask an election inspector for help (absentee voters: contact your municipal clerk).

To vote for a name on the ballot, fill in the oval next to the name like this: ●

To vote for a name that is not on the ballot, write the name on the line marked "write-in" and fill in the oval next to the name like this: ●

Judicial

Justice of the Supreme Court Vote for 1

- ☐ Janet C. Protasiewicz
☐ Daniel Kelly
☐ write-in:

Court of Appeals Judge District 4 Vote for 1

- ☐ Chris Taylor
☐ write-in:

Circuit Court Judge Branch 4 Vote for 1

- ☐ Ashley Morse
☐ write-in:

Circuit Court Judge Branch 6 Vote for 1

- ☐ John M. Wood
☐ write-in:

Municipal

Town Board Chairperson Vote for 1

- ☐ Wayne Udulutch
☐ write-in:

Town Board Supervisor 1 Vote for 1

- ☐ Lenny Heath
☐ write-in:

Town Board Supervisor 2 Vote for 1

- ☐ Richard Zanzinger
☐ write-in:

Continue voting at top of next column.

Municipal (cont.)

Town Clerk Vote for 1

- ☐ Devona Udulutch
☐ write-in:

Town Treasurer Vote for 1

- ☐ Ellen Punzel
☐ write-in:

School District

Edgerton School District School Board Member Vote for not more than 3

- ☐ Jeremiah Johnson
☐ Brandon Ferrell
☐ Leia Maves
☐ write-in:
☐ write-in:
☐ write-in:

Referendum

To vote in favor of a question, fill in the oval next to "Yes," like this: ●

To vote against a question, fill in the oval next to "No," like this: ●

State

Question 1:

"Conditions of release before conviction. Shall section 8 (2) of article I of the constitution be amended to allow a court to impose on an accused person being released before conviction conditions that are designed to protect the community from serious harm?"

- ☐ Yes
☐ No

Continue voting at top of next column.

Referendum (cont.)

To vote in favor of a question, fill in the oval next to "Yes," like this: ●

To vote against a question, fill in the oval next to "No," like this: ●

State

Question 2:

"Cash bail before conviction. Shall section 8 (2) of article I of the constitution be amended to allow a court to impose cash bail on a person accused of a violent crime based on the totality of the circumstances, including the accused's previous convictions for a violent crime, the probability that the accused will fail to appear, the need to protect the community from serious harm and prevent witness intimidation, and potential affirmative defenses?"

- ☐ Yes
☐ No

State

Question 3:

"Shall able-bodied, childless adults be required to look for work in order to receive taxpayer-funded welfare benefits?"

- ☐ Yes
☐ No

Official Ballot

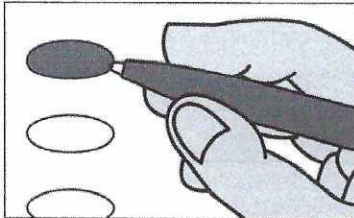
Nonpartisan Office and Referendum

April 4, 2023

S11

Notice to Voters: If you are voting on Election Day, your ballot must be initiated by two (2) election inspectors. If you are voting absentee, your ballot must be initiated by the municipal clerk or deputy clerk. Your ballot may not be counted without initials (see end of ballot for initials).

General Instructions



If you make a mistake on your ballot or have a question, ask an election inspector for help (absentee voters: contact your municipal clerk).

To vote for a name on the ballot, fill in the oval next to the name like this: ●

To vote for a name that is not on the ballot, write the name on the line marked "write-in" and fill in the oval next to the name like this: ●

Judicial

Justice of the Supreme Court Vote for 1

- ☐ Janet C. Protasiewicz
☐ Daniel Kelly
☐ write-in:

Court of Appeals Judge District 4 Vote for 1

- ☐ Chris Taylor
☐ write-in:

Circuit Court Judge Branch 4 Vote for 1

- ☐ Ashley Morse
☐ write-in:

Circuit Court Judge Branch 6 Vote for 1

- ☐ John M. Wood
☐ write-in:

Municipal

Town Board Chairperson Vote for 1

- ☐ Wayne Udulutch
☐ write-in:

Town Board Supervisor 1 Vote for 1

- ☐ Lenny Heath
☐ write-in:

Town Board Supervisor 2 Vote for 1

- ☐ Richard Zanzinger
☐ write-in:

Continue voting at top of next column.

Municipal (cont.)

Town Clerk Vote for 1

- ☐ Devona Udulutch
☐ write-in:

Town Treasurer Vote for 1

- ☐ Ellen Punzel
☐ write-in:

School District

Evansville Community School District School Board Member Vote for not more than 3

- ☐ Mitch Larson
☐ Mason Braunschweig
☐ Elliot Samuel-Lamm
☐ Sandra Spanton-Nelson
☐ Melissa Hammann
☐ Ann Elliott
☐ write-in:
☐ write-in:
☐ write-in:

Referendum

To vote in favor of a question, fill in the oval next to "Yes," like this: ●

To vote against a question, fill in the oval next to "No," like this: ●

State

Question 1:

"Conditions of release before conviction. Shall section 8 (2) of article I of the constitution be amended to allow a court to impose on an accused person being released before conviction conditions that are designed to protect the community from serious harm?"

- ☐ Yes
☐ No

Continue voting at top of next column.

Referendum (cont.)

To vote in favor of a question, fill in the oval next to "Yes," like this: ●

To vote against a question, fill in the oval next to "No," like this: ●

State

Question 2:

"Cash bail before conviction. Shall section 8 (2) of article I of the constitution be amended to allow a court to impose cash bail on a person accused of a violent crime based on the totality of the circumstances, including the accused's previous convictions for a violent crime, the probability that the accused will fail to appear, the need to protect the community from serious harm and prevent witness intimidation, and potential affirmative defenses?"

- ☐ Yes
☐ No

State

Question 3:

"Shall able-bodied, childless adults be required to look for work in order to receive taxpayer-funded welfare benefits?"

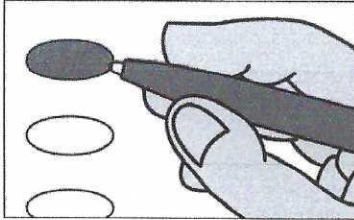
- ☐ Yes
☐ No

Official Ballot
Nonpartisan Office and Referendum
April 4, 2023

S12

Notice to Voters: If you are voting on Election Day, your ballot must be initialed by two (2) election inspectors. If you are voting absentee, your ballot must be initialed by the municipal clerk or deputy clerk. Your ballot may not be counted without initials (see end of ballot for initials).

General Instructions



If you make a mistake on your ballot or have a question, ask an election inspector for help (absentee voters: contact your municipal clerk).

To vote for a name on the ballot, fill in the oval next to the name like this: ●

To vote for a name that is not on the ballot, write the name on the line marked "write-in" and fill in the oval next to the name like this: ●

Judicial

Justice of the Supreme Court
Vote for 1

- ☐ Janet C. Protasiewicz
☐ Daniel Kelly
☐ write-in:

Court of Appeals Judge
District 4
Vote for 1

- ☐ Chris Taylor
☐ write-in:

Circuit Court Judge
Branch 4
Vote for 1

- ☐ Ashley Morse
☐ write-in:

Circuit Court Judge
Branch 6
Vote for 1

- ☐ John M. Wood
☐ write-in:

Municipal

Town Board Chairperson
Vote for 1

- ☐ Wayne Udulutch
☐ write-in:

Town Board Supervisor 1
Vote for 1

- ☐ Lenny Heath
☐ write-in:

Town Board Supervisor 2
Vote for 1

- ☐ Richard Zanzinger
☐ write-in:

Continue voting at top of next column.

Municipal (cont.)

Town Clerk
Vote for 1

- ☐ Devona Udulutch
☐ write-in:

Town Treasurer
Vote for 1

- ☐ Ellen Punzel
☐ write-in:

School District

Parkview School District
School Board Member
Vote for not more than 2

- ☐ Tina Suiter-Meyers
☐ John R. Thomson
☐ write-in:
☐ write-in:

Referendum

To vote in favor of a question, fill in the oval next to "Yes," like this: ●

To vote against a question, fill in the oval next to "No," like this: ●

State

Question 1:

"Conditions of release before conviction. Shall section 8 (2) of article I of the constitution be amended to allow a court to impose on an accused person being released before conviction conditions that are designed to protect the community from serious harm?"

- ☐ Yes
☐ No

Continue voting at top of next column.

Referendum (cont.)

To vote in favor of a question, fill in the oval next to "Yes," like this: ●

To vote against a question, fill in the oval next to "No," like this: ●

State

Question 2:

"Cash bail before conviction. Shall section 8 (2) of article I of the constitution be amended to allow a court to impose cash bail on a person accused of a violent crime based on the totality of the circumstances, including the accused's previous convictions for a violent crime, the probability that the accused will fail to appear, the need to protect the community from serious harm and prevent witness intimidation, and potential affirmative defenses?"

- ☐ Yes
☐ No

State

Question 3:

"Shall able-bodied, childless adults be required to look for work in order to receive taxpayer-funded welfare benefits?"

- ☐ Yes
☐ No

*Referendums
continue on
back of ballot.*

Continue voting on back of ballot.

Referendum

To vote in favor of a question, fill in the oval next to "Yes," like this: ●

To vote against a question, fill in the oval next to "No," like this: ○

Parkview School District

Question:

Shall the Parkview School District, Rock County, Wisconsin for 3 years, beginning with the 2023-2024 school year and ending with the 2025-2026 school year, be authorized to exceed the revenue limit specified in Section 121.91, Wisconsin Statutes, by \$1,450,000 per year, for non-recurring purposes consisting of technology and curriculum materials, educational programming, expenses associated with bus routes, and costs associated with recruiting and retaining staff?

☐ Yes

☐ No

Official Ballot

Nonpartisan Office

and Referendum

April 4, 2023

for

Town of Center

Parkview
School
District

Ballot issued by

Initials of election inspectors

Absentee ballot issued by

Initials of Municipal Clerk or Deputy Clerk

If issued by SVDs, both must initial.

Certification of Voter Assistance

I certify that I marked or read aloud this ballot at the request and direction of a voter who is authorized under Wis. Stat. §6.82 to receive assistance.

Signature of assistor

For Official Use Only

Inspectors: Identify ballots required to be remade:

- ☐ Overvoted
☐ Damaged
☐ Other

If this is the **Original** Ballot, write serial number here:

If this is the **Duplicate** Ballot, write serial number here:

Initials of inspectors who remade ballot