

## VOTING BY ABSENTEE BALLOT

City of Evansville, Town of Center, Town of Porter, and Town of Union

General Election November 8, 2022

Any qualified elector who is unable or unwilling to appear at the polling place on Election Day may submit a request to vote an absentee ballot to their municipal clerk. A qualified elector is any U.S. citizen, who will be 18 years of age or older on Election Day, who has resided in the ward or municipality where he or she wishes to vote for at least 28 consecutive days before the election. The elector must also be registered in order to receive an absentee ballot. Proof of identification must be provided before an absentee ballot may be issued.

**You must make a request for an absentee ballot in writing or online at [MyVote.wi.gov](https://MyVote.wi.gov).**

Contact your municipal clerk and request that an application for an absentee ballot be sent to you for the primary or election or both. You may also submit a written request in the form of a letter or you may apply for an absentee ballot online at [MyVote.wi.gov](https://MyVote.wi.gov). Your written request must list your voting address within the municipality where you wish to vote, the address where the absentee ballot should be sent, if different, and your signature. You may submit an application to your municipal clerk for an absentee ballot in person, by mail, by fax, by email or at [MyVote.wi.gov](https://MyVote.wi.gov).

### **Making application to receive an absentee ballot by mail**

**The deadline for making application to receive an absentee ballot by mail is:**

5 pm on the fifth day before the election, Thursday, November 3, 2022.

**Note:** Special absentee voting application provisions apply to electors who are indefinitely confined to home or a care facility, in the military, hospitalized, or serving as a sequestered juror. If this applies to you, contact the municipal clerk regarding deadlines for requesting and submitting an absentee ballot.

### **Voting an absentee ballot in person**

You may also request and vote an absentee ballot in the clerk's office or other specified location during the days and hours specified for casting an absentee ballot in person.

City of Evansville Monday – Friday, 8:00 a.m. – 4:30 p.m., (8:00 a.m. – 5:00 p.m. on August 5th)  
31 S Madison Street, Evansville, WI 53536 (608) 882-2266 Leah Hurtley, Deputy City Clerk

Town of Center ***By Appointment Only***, 7416 W. Mineral Point Road, Janesville, WI 53548  
(608) 876-6265 Devona Udulutch, Town Clerk

Town of Porter ***By Appointment Only***, 6718 N Riley Road, Evansville, WI 53536  
608.683.0963 Becky Ottesen, Town Clerk

Town of Union ***By Appointment Only***, 15531 W Green Bay Rd, Evansville, WI 53536  
(608) 736-7070 Regina Riedel, Town Clerk

**The first day to vote an absentee ballot in the clerk's office is Tuesday, October 25, 2022**

**The last day to vote an absentee ballot in the clerk's office Friday, November 4, 2022.**

No in-person absentee voting may occur on the day before the election.

The municipal clerk will deliver voted ballots returned on or before Election Day to the proper polling place or counting location before the polls close on November 8, 2022. Any ballots received after the polls close will not be counted.

# IMPORTANT NOTICE TO VOTERS

The ballot you received has a mistake in the listing for the Representative in Congress for District 2.

The ballot should have read:

## Representative In Congress District 2

### Vote For One

- ☐ Mark Pocan (Democratic)
- ☐ Erik Olsen (Republican)
- ☐ Douglas Alexander (Term Limits on Congress)
- ☐ Write In

All candidates for Representative in Congress for Congressional District 2 remain the same despite this mistake. Votes cast on your ballot will not be affected by this mistake.

### Does this Affect My Ballot?

If you have already voted your absentee ballot and do not wish to make any changes, no action is required by you and your vote will be counted.

For voters receiving this notice with their ballot, this mistake will not affect the votes cast on your ballot, and you may use this ballot to vote in this election.

### Questions About this Notice?

If you have any questions about this notice, please contact your municipal clerk's office, you can find their information at <https://myvote.wi.gov/en-us/My-Municipal-Clerk>. You may also contact the Wisconsin Elections Commission's Helpdesk at (608) 266-8005 or toll free at (866) VOTE-WIS.

### What was the Mistake?

Wisconsin Statutes Sections 5.64(1)(e)1. and 5.64(1)(es) allow independent candidates to include a statement of principle, if any, in five words or less, along with their name on the ballot. Due to an administrative error by state level election officials, county clerks in United States Congressional District 2 did not receive all required information to include on the applicable ballots before having those ballots printed.

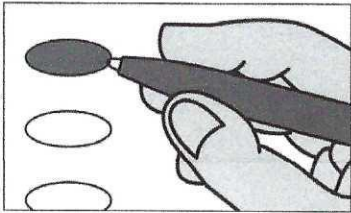


**Official Ballot**  
**Partisan Office**  
**November 8, 2022**

S12

Notice to voters: If you are voting on Election Day, your ballot must be initialed by two (2) election inspectors. If you are voting absentee, your ballot must be initialed by the municipal clerk or deputy clerk. Your ballot may not be counted without initials (see back of ballot for initials).

**General Instructions**



If you make a mistake on your ballot or have a question, ask an election inspector for help (absentee voters: contact your municipal clerk).

To vote for a name on the ballot, fill in the oval next to the name like this: ●

To vote for a name that is not on the ballot, write the name on the line marked "write-in" and fill in the oval next to the name like this: ●

**Statewide**

When voting for Governor and Lieutenant Governor, you have one of two choices:

- Vote for candidates on one ticket, or
- Write-in names of persons on both write-in lines

A write-in vote for only a Lieutenant Governor candidate **will not be counted**.

**Governor /  
Lieutenant Governor  
Vote for 1**

☐ Tony Evers /  
Sara Rodriguez  
(Democratic)

☐ Tim Michels /  
Roger Roth  
(Republican)

☐ Joan Ellis Beglinger /  
No Candidate  
(Independent)

☐ \_\_\_\_\_  
write-in (Governor)

☐ \_\_\_\_\_  
write-in (Lieutenant Governor)

**Attorney General  
Vote for 1**

☐ Josh Kaul  
(Democratic)

☐ Eric Toney  
(Republican)

☐ write-in

Continue voting at top of next column.

**Statewide (cont.)**

**Secretary of State  
Vote for 1**

☐ Doug La Follette  
(Democratic)

☐ Amy Lynn Loudenbeck  
(Republican)

☐ Neil Harmon  
(Libertarian)

☐ Sharyl R. McFarland  
(Wisconsin Green Party)

☐ write-in

**State Treasurer  
Vote for 1**

☐ Aaron Richardson  
(Democratic)

☐ John S. Leiber  
(Republican)

☐ Andrew Zuelke  
(Constitution)

☐ write-in

**Congressional**

**United States Senator  
Vote for 1**

☐ Mandela Barnes  
(Democratic)

☐ Ron Johnson  
(Republican)

☐ write-in

**Representative in Congress  
District 2  
Vote for 1**

☐ Mark Pocan  
(Democratic)

☐ Erik Olsen  
(Republican)

☐ Douglas Alexander  
(Independent)

☐ write-in

Continue voting at top of next column.

**Legislative**

**State Senator  
District 15  
Vote for 1**

☐ Mark Spreitzer  
(Democratic)

☐ Mark Trofimchuk  
(Republican)

☐ write-in

**Representative to the Assembly  
District 43  
Vote for 1**

☐ Jenna Jacobson  
(Democratic)

☐ Marisa Voelkel  
(Republican)

☐ write-in

**County**

**Sheriff  
Vote for 1**

☐ Curtis Fell  
(Democratic)

☐ Craig C. Keller  
(Independent)

☐ write-in

**Clerk of Circuit Court  
Vote for 1**

☐ Jacki Gackstatter  
(Democratic)

☐ write-in

SAMPLE

S12

**Official Ballot**

Partisan Office

November 8, 2022

for

Town of Center

Edgerton/Evansville  
School Districts

**Ballot issued by**

\_\_\_\_\_

Initials of election inspectors

**Absentee ballot issued by**

Initials of Municipal Clerk or Deputy Clerk

If issued by SVDs, both SVDs must initial.

**Certification of Voter Assistance**

I certify that I marked or read aloud this ballot at the request and direction of a voter who is authorized under Wis. Stat. §6.82 to receive assistance.

Signature of assistor

**For Official Use Only**

**Inspectors:** Identify ballots required to be remade:

- ☐ Overvoted  
☐ Damaged  
☐ Other

If this is the **Original** Ballot, write the serial number here:

\_\_\_\_\_

If this is the **Duplicate** Ballot, write the serial number here:

\_\_\_\_\_

Initials of inspectors who remade ballot

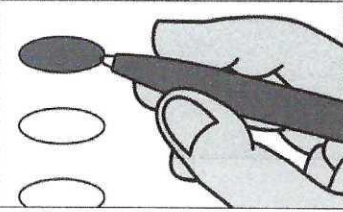







**Official Ballot**  
**Partisan Office and Referendum**  
**November 8, 2022**

S13

Notice to voters: If you are voting on Election Day, your ballot must be initialed by two (2) election inspectors. If you are voting absentee, your ballot must be initialed by the municipal clerk or deputy clerk. Your ballot may not be counted without initials (see back of ballot for initials).

| General Instructions  | Statewide (cont.)   | Legislative   |
|---|---|---|
|  <p>If you make a mistake on your ballot or have a question, ask an election inspector for help (absentee voters: contact your municipal clerk).</p> <p>To vote for a name on the ballot, fill in the oval next to the name like this: </p> <p>To vote for a name that is not on the ballot, write the name on the line marked "write-in" and fill in the oval next to the name like this: </p>  | <p><b>Secretary of State</b><br/>Vote for 1</p> <p><input type="radio"/> Doug La Follette (Democratic)</p> <p><input type="radio"/> Amy Lynn Loudonbeck (Republican)</p> <p><input type="radio"/> Neil Harmon (Libertarian)</p> <p><input type="radio"/> Sharyl R. McFarland (Wisconsin Green Party)</p> <p><input type="radio"/> write-in</p> <p><b>State Treasurer</b><br/>Vote for 1</p> <p><input type="radio"/> Aaron Richardson (Democratic)</p> <p><input type="radio"/> John S. Leiber (Republican)</p> <p><input type="radio"/> Andrew Zuelke (Constitution)</p> <p><input type="radio"/> write-in</p> <p><b>Congressional</b></p> <p><b>United States Senator</b><br/>Vote for 1</p> <p><input type="radio"/> Mandela Barnes (Democratic)</p> <p><input type="radio"/> Ron Johnson (Republican)</p> <p><input type="radio"/> write-in</p> <p><b>Representative in Congress</b><br/>District 2<br/>Vote for 1</p> <p><input type="radio"/> Mark Pocan (Democratic)</p> <p><input type="radio"/> Erik Olsen (Republican)</p> <p><input type="radio"/> Douglas Alexander (Independent)</p> <p><input type="radio"/> write-in</p> | <p><b>State Senator</b><br/>District 15<br/>Vote for 1</p> <p><input type="radio"/> Mark Spreitzer (Democratic)</p> <p><input type="radio"/> Mark Trofimchuck (Republican)</p> <p><input type="radio"/> write-in</p> <p><b>Representative to the Assembly</b><br/>District 43<br/>Vote for 1</p> <p><input type="radio"/> Jenna Jacobson (Democratic)</p> <p><input type="radio"/> Marisa Voelkel (Republican)</p> <p><input type="radio"/> write-in</p> <p><b>County</b></p> <p><b>Sheriff</b><br/>Vote for 1</p> <p><input type="radio"/> Curtis Fell (Democratic)</p> <p><input type="radio"/> Craig C. Keller (Independent)</p> <p><input type="radio"/> write-in</p> <p><b>Clerk of Circuit Court</b><br/>Vote for 1</p> <p><input type="radio"/> Jacki Gackstatter (Democratic)</p> <p><input type="radio"/> write-in</p> |
| <p><b>Statewide</b></p> <p>When voting for Governor and Lieutenant Governor, you have one of two choices:</p> <ul style="list-style-type: none"> <li>• Vote for candidates on one ticket, or</li> <li>• Write-in names of persons on both write-in lines</li> </ul> <p>A write-in vote for only a Lieutenant Governor candidate <b>will not be counted.</b></p> <p><b>Governor / Lieutenant Governor</b><br/>Vote for 1</p> <p><input type="radio"/> Tony Evers / Sara Rodriguez (Democratic)</p> <p><input type="radio"/> Tim Michels / Roger Roth (Republican)</p> <p><input type="radio"/> Joan Ellis Beglinger / No Candidate (Independent)</p> <p><input type="radio"/> _____<br/>write-in (Governor)</p> <p><input type="radio"/> _____<br/>write-in (Lieutenant Governor)</p> <p><b>Attorney General</b><br/>Vote for 1</p> <p><input type="radio"/> Josh Kaul (Democratic)</p> <p><input type="radio"/> Eric Toney (Republican)</p> <p><input type="radio"/> write-in</p> | <p>Continue voting at top of next column.</p>   | <p>Continue voting on back of ballot.</p>   |
| <p align="center"><b>Continue to back of ballot for Referendums.</b></p>  |   |   |
| <p align="center">Page 1 of 2-sided ballot. Ballot continues on other side. </p>   |   |   |

**Referendum**

To vote in favor of a question, fill in the oval next to "Yes," like this: ☐

To vote against a question, fill in the oval next to "No," like this: ☐

**Parkview School District**

Question 1: Shall the Parkview School District, Rock County, Wisconsin be authorized to exceed the revenue limit specified in Section 121.91, Wisconsin Statutes, by \$2,000,000 per year for the 2023-2024 school year through the 2025-2026 school year, for non-recurring purposes consisting of technology and curriculum materials, educational programming, costs associated with recruiting and retaining staff, and other operational and maintenance expenses?

☐ Yes

☐ No

**Parkview School District**

Question 2: Shall the Parkview School District, Rock County, Wisconsin be authorized to issue pursuant to Chapter 67 of the Wisconsin Statutes, general obligation bonds in an amount not to exceed \$15,400,000 for the public purpose of paying the cost of a school facility improvement project consisting of: construction of an addition and renovations at the Elementary School, including for classrooms, the cafeteria and kitchen, and updates to instructional areas; construction of an addition and renovations at the Junior/Senior High School, including for science, agriculture, career and technology education classrooms; district-wide building systems, infrastructure and technology improvements; and acquisition of furnishings, fixtures and equipment?

☐ Yes

☐ No

**Official Ballot**

Partisan Office

and Referendum

November 8, 2022

for

Town of Center

Parkview School  
District

**Ballot issued by**

Initials of election inspectors

**Absentee ballot issued by**

Initials of Municipal Clerk or Deputy Clerk

If issued by SVDs, both SVDs must initial.

**Certification of Voter Assistance**

I certify that I marked or read aloud this ballot at the request and direction of a voter who is authorized under Wis. Stat. §6.82 to receive assistance.

Signature of assistor

**For Official Use Only**

**Inspectors:** Identify ballots required to be remade:

- ☐ Overvoted  
☐ Damaged  
☐ Other

If this is the **Original Ballot**, write the serial number here:

If this is the **Duplicate Ballot**, write the serial number here:

Initials of inspectors who remade ballot