

Notice of Partisan Primary Election and Sample Ballots

August 9, 2022

Office of the City of Evansville, Town of Center, Town of Porter & Town of Union Clerks

To the Voters of the City of Evansville, Town of Center, Town of Porter & Town of Union:

Notice is hereby given of a partisan primary election to be held in the City of Evansville, Town of Center, Town of Porter and Town of Union, Rock County, on August 9, 2022, at which the officers named below, shall be chosen. The names of the candidates for each office to be voted for, whose nominations have been certified to or filed in this office, are given under the title of the office, each in its proper column, together with the questions submitted to a vote, for a referendum, if any, in the sample ballot below.

Information to Voters

Upon entering the polling place, a voter shall:

- state his or her name and address
- show an acceptable form of photo identification*
- sign the poll book before being permitted to vote**

**If a voter does not have acceptable photo identification, the voter may obtain a free photo ID for voting from the Division of Motor Vehicles. If a voter is not registered to vote, a voter may register to vote at the polling place serving his or her residence, if the voter presents proof of residence in a form specified by law.*

***If the voter is unable to sign the poll book due to disability, a poll worker may write the word "exempt."*

Where ballots are distributed to voters, the initials of two inspectors must appear on the ballot.

Upon being permitted to vote, the voter shall retire alone to a voting booth and cast his or her ballot except that a voter who is a parent or guardian may be accompanied by the voter's minor child or minor ward.

An election official may inform the voter of the proper manner for casting a vote, but the official may not in any manner advise or indicate a particular voting choice.

At the partisan primary, the voter shall select the party of their choice. Voting for candidates of more than one party may invalidate the ballot. The voter must cast a vote for individual candidates.

Where Optical Scan Voting is Used

The voter shall fill in the oval next to the name of the candidate of his or her choice for each office for which he or she intends to vote. To vote for a person whose name does not appear on the ballot, the voter shall write in the name of the person of his or her choice.

In the space provided for a write-in vote and fill in the oval next to the write-in line. On referendum questions, the voter shall fill in the oval next to "yes" if in favor of the question, or the voter shall fill in the oval next to "no" if opposed to the question.

When using an *electronic ballot marking device* ("Automark," "ExpressVote," Clear Access or

"ImageCast Evolution-ICE") to mark an **optical scan** ballot, the voter shall touch the screen at the name of the candidate of his or her choice for each office for which he or she intends to vote. To vote for a person whose name does not appear on the ballot, the voter shall type in the name of the person of his or her choice in the space provided for a write-in vote. On referendum questions, the voter shall touch the screen at "yes" if in favor of the question, or the voter shall touch the screen at "no" if opposed to the question.

Where Touch Screen Voting is Used

The voter shall touch the screen at the name of the candidate of his or her choice for each office for which he or she intends to vote. To vote for a person whose name does not appear on the ballot, the voter shall type in the name of the person of his or her choice in the space provided for a write-in vote. On referendum questions, the voter shall touch the screen at "yes" if in favor of the question, or the voter shall touch the screen at "no" if opposed to the question.

The vote should not be cast in any other manner. Not more than five minutes' time shall be allowed inside a voting booth. Sample ballots or other materials to assist the voter in casting his or her vote may be taken into the booth and copied. The sample ballot shall not be shown to anyone so as to reveal how the ballot is marked.

Spoiled Ballot

If the voter spoils a **paper or optical scan** ballot, he or she shall return it to an election official who shall issue another ballot in its place, but not more than three ballots shall be issued to any one voter. If the ballot has not been initialed by two inspectors or is defective in any other way, the voter shall return it to the election official, who shall issue a proper ballot in its place.

The voter may spoil a **touch screen** ballot at the voting station before the ballot is cast.

After Voting the Ballot

After an official **paper** ballot is marked, it shall be folded so the inside marks do not show, but so the printed endorsements and inspectors' initials on the outside do show. The voter shall leave the booth, deposit the ballot in the ballot box, or deliver the ballot to an inspector for deposit, and shall leave the polling place promptly.

After an official **optical scan** ballot is marked, it shall be inserted in the security sleeve, so the marks do not show. After casting his or her vote, the voter shall leave the booth, insert the ballot in the voting device and discard the sleeve, or deliver the ballot to an inspector for deposit. If a central count system is used, the voter shall insert the ballot in the ballot box and discard the sleeve or deliver the ballot to an inspector for deposit. The voter shall leave the polling place promptly.

After an official **touch screen** ballot is cast, the voter shall leave the polling place promptly.

A voter may select an individual to assist in casting his or her vote if the voter declares to the presiding official that he or she is unable to read, has difficulty reading, writing or understanding English or that due to disability is unable to cast his or her ballot. The selected individual rendering assistance may not be the voter's employer or an agent of that employer or an officer or agent of a labor organization, which represents the voter.

The following is a sample of the official ballot:

Municipal Clerks- City of Evansville, Leah Hurtley; Town of Center, Devona Udulutch; Town of Porter, Becky Ottesen; Town of Union, Regina Reidel.

SAMPLE

Official Primary Ballot

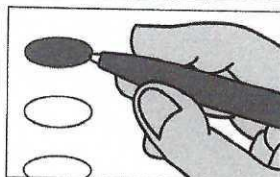
Partisan Office

August 9, 2022

S10

Notice to Voters: If you are voting on Election Day, your ballot must be initiated by two (2) election inspectors. If you are voting absentee, your ballot must be initiated by the municipal clerk or deputy clerk. Your ballot may not be counted without initials (see end of ballot for initials).

General Instructions



If you make a mistake on your ballot or have a question, ask an election inspector for help (absentee voters: Contact your municipal clerk).

To vote for a name on the ballot, fill in the oval next to the name like this: ●

To vote for a name that is not on the ballot, write the name on the line marked "write-in" and fill in the oval next to the name like this: ●

Special Instructions for Voting in a Partisan Primary

In the Partisan Primary:

- You may vote in only ONE party's primary.
- If you choose a party, votes cast in that party will be counted. Votes cast in any other party will not be counted.
- If you do not choose a party, and you vote in more than one party, no votes will be counted.

You must vote for individual candidates.

Party Preference Section

Choose a party in which to vote

Fill in the oval next to your party choice like this: ●

Choose only ONE

- ☐ Democratic
- ☐ Republican
- ☐ Libertarian
- ☐ Constitution

Democratic Party Primary

If you vote in this party's primary, you may not vote in any other party's primary.

Statewide

Governor

Vote for 1

☐ Tony Evers

☐ write-in

Lieutenant Governor

Vote for 1

☐ Peng Her

☐ Sara Rodriguez

☐ write-in

Attorney General

Vote for 1

☐ Josh Kaul

☐ write-in

Secretary of State

Vote for 1

☐ Doug La Follette

☐ Alexia Sabor

☐ write-in

State Treasurer

Vote for 1

☐ Aaron Richardson

☐ Angelito Tenorio

☐ Gillian M. Battino

☐ write-in

Congressional

United States Senator

Vote for 1

☐ Mandela Barnes

☐ Alex Lasry

☐ Kou C. Lee

☐ Sarah Godlewski

☐ Peter Peckarsky

☐ Steven Olikara

☐ Darrell Williams

☐ Tom Nelson

☐ write-in

Representative in Congress

District 2

Vote for 1

☐ Mark Pocan

☐ write-in

Legislative

State Senator

District 15

Vote for 1

☐ Mark Spreitzer

☐ write-in

Representative to the Assembly

District 43

Vote for 1

☐ Jenna Jacobson

☐ Matt McIntyre

☐ write-in

County

Sheriff

Vote for 1

☐ Troy Egger

☐ Curtis Fell

☐ write-in

Clerk of Circuit Court

Vote for 1

☐ Jacki Gackstatter

☐ write-in

☒ End Democratic Party Primary

Republican Party Primary

If you vote in this party's primary, you may not vote in any other party's primary.

Statewide

Governor

Vote for 1

☐ Kevin Nicholson

☐ Rebecca Kleefisch

☐ Timothy Ramthun

☐ Adam J. Fischer

☐ Tim Michels

☐ write-in

Lieutenant Governor

Vote for 1

☐ Patrick Testin

☐ Will Martin

☐ Kyle Yudes

☐ Roger Roth

☐ David C. Varnam

☐ Cindy Werner

☐ David D. King

☐ Jonathan Wichmann

☐ write-in

Attorney General

Vote for 1

☐ Eric Toney

☐ Karen Mueller

☐ Adam Jarchow

☐ write-in

Secretary of State

Vote for 1

☐ Amy Lynn Loudonbeck

☐ Jay Schroeder

☐ Justin D. Schmidtka

☐ write-in

State Treasurer

Vote for 1

☐ John S. Leiber

☐ Orlando Owens

☐ write-in

Congressional

United States Senator

Vote for 1

☐ Ron Johnson

☐ David Schroeder

☐ write-in

Representative in Congress

District 2

Vote for 1

☐ Charity Barry

☐ Erik Olsen

☐ write-in

Legislative

State Senator

District 15

Vote for 1

☐ Mark Trofimchuck

☐ write-in

Representative to the Assembly

District 43

Vote for 1

☐ Marisa Voelkel

☐ write-in

County

Sheriff

Vote for 1

☐ write-in

Clerk of Circuit Court

Vote for 1

☐ write-in

☒ End Republican Party Primary

Libertarian Party Primary	Constitution Party Primary	
<p><i>If you vote in this party's primary, you may not vote in any other party's primary.</i></p>		
Statewide	Statewide	
Governor	Governor	
Vote for 1	Vote for 1	
<input type="radio"/> write-in	<input type="radio"/> write-in	
Lieutenant Governor	Lieutenant Governor	
Vote for 1	Vote for 1	
<input type="radio"/> write-in	<input type="radio"/> write-in	
Attorney General	Attorney General	
Vote for 1	Vote for 1	
<input type="radio"/> write-in	<input type="radio"/> write-in	
Secretary of State	Secretary of State	
Vote for 1	Vote for 1	
<input type="radio"/> Neil Harmon	<input type="radio"/> write-in	
<input type="radio"/> write-in	State Treasurer	
State Treasurer	Vote for 1	
<input type="radio"/> write-in	<input type="radio"/> Andrew Zuelke	
<input type="radio"/> write-in	<input type="radio"/> write-in	
Congressional	Congressional	
United States Senator	United States Senator	
Vote for 1	Vote for 1	
<input type="radio"/> write-in	<input type="radio"/> write-in	
Representative in Congress	Representative in Congress	
District 2	District 2	
Vote for 1	Vote for 1	
<input type="radio"/> write-in	<input type="radio"/> write-in	
Legislative	Legislative	
State Senator	State Senator	
District 15	District 15	
Vote for 1	Vote for 1	
<input type="radio"/> write-in	<input type="radio"/> write-in	
Representative to the Assembly	Representative to the Assembly	
District 43	District 43	
Vote for 1	Vote for 1	
<input type="radio"/> write-in	<input type="radio"/> write-in	
County	County	
Sheriff	Sheriff	
Vote for 1	Vote for 1	
<input type="radio"/> write-in	<input type="radio"/> write-in	
Clerk of Circuit Court	Clerk of Circuit Court	
Vote for 1	Vote for 1	
<input type="radio"/> write-in	<input type="radio"/> write-in	
End Libertarian Party Primary	End Constitution Party Primary	

Official Primary Ballot
 Partisan Office
 August 9, 2022
 for
Town of Center

Ballot issued by

 Initials of election inspectors

Absentee ballot issued by

 Initials of Municipal Clerk or Deputy Clerk
 If issued by SVDs, both must initial

Certification of Voter Assistance
 I certify that I marked or read aloud this ballot at the request and direction of a voter who is authorized under Wis. Stat. §6.82 to receive assistance.

 Signature of assistor

For Official Use Only

Inspectors: Identify ballots required to be remade:
☐ Overvoted
☐ Damaged
☐ Other

If this is the Original Ballot, write the serial number here:

If this is the Duplicate Ballot, write the serial number here:

 Initials of inspectors who remade ballot