

## Notice of Partisan Primary and

### Sample Ballots

August 11, 2020

OFFICE OF THE CITY OF EVANSVILLE, TOWN OF CENTER, TOWN OF PORTER & TOWN OF UNION CLERKS.

TO THE ROCK COUNTY VOTERS OF THE CITY OF EVANSVILLE, TOWN OF CENTER, TOWN OF PORTER & TOWN OF UNION:

Notice is hereby given of a partisan primary to be held in the City of Evansville, Town of Center, Town of Porter and Town of Union, Rock County, on August 11, 2020 at which the nominees for the offices named below shall be chosen. The names of the candidates for each office, whose nominations have been certified to or filed in this office, are given under the title of the office under the appropriate party, each in its proper column, together with the questions submitted to a vote, if any, in the sample ballot below.

### INFORMATION TO VOTERS

Upon entering the polling place, a voter shall state his or her name and address, show an acceptable form of photo identification and sign the poll book before being permitted to vote. If a voter does not have acceptable photo identification, the voter may obtain a free photo ID for voting from the Division of Motor Vehicles. If a voter is not registered to vote, a voter may register to vote at the polling place serving his or her residence, if the voter presents proof of residence in a form specified by law. Where ballots are distributed to voters, the initials of two inspectors must appear on the ballot. Upon being permitted to vote, the voter shall retire alone to a voting booth and cast his or her ballot except that a voter who is a parent or guardian may be accompanied by the voter's minor child or minor ward. An election official may inform the voter of the proper manner for casting a vote, but the official may not in any manner advise or indicate a particular voting choice.

**At the partisan primary, the voter shall select the party of his or her choice.** Voting for candidates of more than one party may invalidate the ballot. You must cast a vote for individual candidates.

### Where Optical Scan Voting is used

- If a party preference *is designated*, and votes are cast for ballot candidates of another party or write-in votes are cast in another party, only votes cast in the designated party will count.
- If a party preference *is not designated*, and votes are cast for candidates (or write-in votes are cast) in more than one party, no votes will be counted

Within the party of his or her choice, the voter shall fill in the oval next to the name of the candidate of his or her choice for each office for which he or she intends to vote. To vote for a person whose name does not appear on the ballot, the voter shall write in the name of the person of his or her choice in the space provided for a write-in vote, and fill in the oval next to the write-in line.

When using an *electronic ballot marking device* ("Express Vote") to mark an **optical scan** ballot, the voter shall touch the screen next to the party of his or her choice. The voter shall then touch the screen at the name of the candidate of his or her choice for each office for which he or she intends to vote. To vote for a person whose name does not appear on the ballot, the voter shall type in the name of the person of his or her choice in the space provided for a write-in vote.

The vote should not be cast in any other manner. Not more than five minutes' time shall be allowed inside a voting booth. Sample ballots or other materials to assist the voter in marking his or her vote may be taken into the booth and copied. The sample ballot shall not be shown to anyone

so as to reveal how the ballot is marked.

### **Spoiled Ballots**

If a voter spoils an **optical scan** ballot, he or she shall return it to an election official who shall issue another ballot in its place, but not more than three ballots shall be issued to any one voter. If the ballot has not been initialed by two inspectors or is defective in any other way, the voter shall return it to the election official, who shall issue a proper ballot in its place.

### **After Voting the Ballot**

After an official **optical scan** ballot is marked, it shall be inserted in the security sleeve so the marks do not show. The voter shall then insert the ballot in the voting device and discard the sleeve, or deliver the ballot to an inspector for deposit. The voter shall leave the polling place promptly.

A voter may select an individual to assist in casting his or her vote if the voter declares to the presiding official that he or she is unable to read, has difficulty reading, writing or understanding English or that due to disability is unable to cast his or her ballot. The selected individual rendering assistance may not be the voter's employer or an agent of that employer or an officer or agent of a labor organization which represents the voter.

Municipal Clerk-City of Evansville, Judy Walton; Town of Center, Devona Udulutch; Town of Porter, Nancy Towns; Town of Union, Regina Riedel.

The following is a sample of the official ballot:

**Type B Notice for Partisan Primary** | Rev 2018-06 | Wisconsin Elections Commission, P.O. Box 7984, Madison, WI 53707-7984 | 608-261-2028 | web: [elections.wi.gov](http://elections.wi.gov) | email: [elections@wi.gov](mailto:elections@wi.gov)

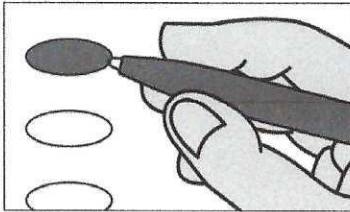


**Official Primary Ballot**  
**Partisan Office**  
**August 11, 2020**

S6

**Notice to Voters:** If you are voting on Election Day, your ballot must be initialed by two (2) election inspectors. If you are voting absentee, your ballot must be initialed by the municipal clerk or deputy clerk. Your ballot may not be counted without initials. (See end of ballot for initials.)

**General Instructions**



If you make a mistake on your ballot or have a question, ask a poll worker for help. (Absentee voters: Contact your municipal clerk.)

To vote for a name on the ballot, fill in the oval next to the name like this: ●.

To vote for a name that is not on the ballot, write the name on the line marked "write-in," and fill in the oval next to the name like this: ●.

**Special Instructions for Voting in a Partisan Primary**

**In the Partisan Primary:**

- You may vote in only ONE party's primary.
- If you choose a party, votes cast in that party will be counted. Votes cast in any other party will not be counted.
- If you do not choose a party, and you vote in more than one party, no votes will be counted.

**You must vote for individual candidates.**

**Party Preference Section**

**Choose a party in which to vote.**

Fill in the oval next to your party choice, like this: ●. **Choose only ONE.**

- ☐ Democratic  
☐ Republican  
☐ Constitution

Democratic Primary begins at top of next column.

**Democratic Party Primary**

*If you vote in this party's primary, you may not vote in any other party's primary.*

**Congressional**

**Representative in Congress  
District 2  
Vote for 1**

- ☐ Mark Pocan  
☐ write-in

**Legislative and State**

**Representative to the Assembly  
District 43  
Vote for 1**

- ☐ Don Vruwink  
☐ write-in

**District Attorney  
Vote for 1**

- ☐ David J. O'Leary  
☐ write-in

**County**

**County Clerk  
Vote for 1**

- ☐ Yuri Rashkin  
☐ Lisa Tollefson  
☐ write-in

**County Treasurer  
Vote for 1**

- ☐ Michelle L. Roettger  
☐ write-in

**Register of Deeds  
Vote for 1**

- ☐ Sandy Disrud  
☐ write-in

**STOP End Democratic Party Primary**

Republican Primary begins at top of next column.

**Republican Party Primary**

*If you vote in this party's primary, you may not vote in any other party's primary.*

**Congressional**

**Representative in Congress  
District 2  
Vote for 1**

- ☐ Peter Theron  
☐ write-in

**Legislative and State**

**Representative to the Assembly  
District 43  
Vote for 1**

- ☐ Beth Drew  
☐ write-in

**District Attorney  
Vote for 1**

- ☐ write-in

**County**

**County Clerk  
Vote for 1**

- ☐ write-in

**County Treasurer  
Vote for 1**

- ☐ write-in

**Register of Deeds  
Vote for 1**

- ☐ write-in

**STOP End Republican Party Primary**

Constitution Primary begins on the other side of ballot.



**Constitution Party Primary**

*If you vote in this party's primary, you may not vote in any other party's primary.*

**Congressional**

**Representative in Congress  
District 2  
Vote for 1**

☐ write-in

**Legislative and State**

**Representative to the Assembly  
District 43  
Vote for 1**

☐ write-in

**District Attorney  
Vote for 1**

☐ write-in

**County**

**County Clerk  
Vote for 1**

☐ write-in

**County Treasurer  
Vote for 1**

☐ write-in

**Register of Deeds  
Vote for 1**

☐ write-in

**STOP End Constitution Party Primary**

**Official Primary Ballot**

**Partisan Office**

**August 11, 2020**

for

T. Center  
T. Fulton  
T. Janesville W1-6  
T. Milton W2-4  
T. Plymouth  
T. Porter  
T. Rock W1-4&6  
V. Footville  
C. Edgerton  
C. Janesville W30  
C. Milton W13

**Ballot issued by**

\_\_\_\_\_  
Initials of election inspectors

**Absentee ballot issued by**

\_\_\_\_\_  
Initials of municipal clerk or deputy clerk

If issued by SVDs, both SVDs must initial.

**Certification of Voter Assistance**

I certify that I marked or read aloud this ballot at the request and direction of a voter who is authorized under Wis. Stat. § 6.82 to receive assistance.

\_\_\_\_\_  
Signature of assistor

**For Official Use Only**

**Inspectors:** Identify ballots required to be remade.

**Reason for remaking ballot:**

- ☐ Overvoted  
☐ Damaged  
☐ Other

If this is the **Original Ballot**, write serial number here:

If this is the **Duplicate Ballot**, write serial number here:

\_\_\_\_\_  
Initials of inspectors who remade ballot

