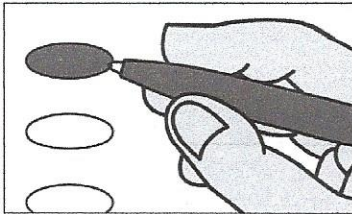


**Official Ballot**  
**Presidential Preference Vote**  
**Nonpartisan Office and Referendum**  
**April 7, 2020**

S10

**Notice to Voters:** If you are voting on Election Day, your ballot must be initiated by 2 election inspectors. If you are voting absentee, your ballot must be initiated by the municipal clerk or deputy clerk. Your ballot may not be counted without initials. (See end of ballot for initials.)

**General Instructions**



If you make a mistake on your ballot or have a question, ask an election inspector for help. (Absentee voters: Contact your municipal clerk.)

To vote for a name on the ballot, fill in the oval next to the name like this ●.

To vote for a name that is not on the ballot, write the name on the line marked "write-in," and fill in the oval next to the line like this ●.

**Special Instructions for Presidential Preference Vote**

**In the Presidential Preference Vote**

- You may vote for only one candidate.
- You may vote in only ONE party.
- If you vote more than once, your vote will not be counted.

**Choose the party in which you will vote.** Within the party you have chosen, you have ONE of 3 choices:

1. Vote for a candidate whose name is printed on this ballot in the party you have chosen.
2. Vote for an uninstructed delegation from Wisconsin to the national convention of the party you have chosen.
3. Write in the name of another person to become the presidential candidate of the party you have chosen.

**Fill in ONE oval in ONE party.**

**Presidential Preference Vote**

**Choose a party in which to vote.** Fill in the oval next to your party choice, like this: ●. **Choose only 1.**

- Democratic
- Republican

**Democratic Party**

*If you vote in this party, you may not vote in the other party.*

**President of the United States  
Vote for 1**

- Tulsi Gabbard
- Amy Klobuchar
- John Delaney
- Deval Patrick
- Bernie Sanders
- Andrew Yang
- Pete Buttigieg
- Tom Steyer
- Elizabeth Warren
- Michael Bennet
- Michael R. Bloomberg
- Joe Biden
- Uninstructed Delegation
- write-in:

**Republican Party**

*If you vote in this party, you may not vote in the other party.*

**President of the United States  
Vote for 1**

- Donald J. Trump
- Uninstructed Delegation
- write-in:

**End Presidential Preference Vote**

**Judicial**

**Justice of the Supreme Court  
Vote for 1**

- Jill J. Karofsky
- Daniel Kelly
- Write-in

**Court of Appeals Judge  
District 4  
Vote for 1**

- Rachel A. Graham
- Write-in

**County**

**County Board Supervisor  
District 2  
Vote for 1**

- Alan Sweeney
- write-in:

**School District**

**Evansville Community  
School District  
School Board Member  
Vote for not more than 3**

- Melissa Hammann
- Curt Nyhus
- Ann Elliott
- John Rasmussen
- Write-in
- Write-in
- Write-in

**SAMPLE**

**Turn ballot  
over for  
referendums.**

Presidential Preference Vote begins at top of next column.

Nonpartisan offices begin at top of next column.

Continue voting on other side of ballot.

**Referendum**

To vote in favor of a question, fill in the oval next to "Yes," like this: ●.

To vote against a question, fill in the oval next to "No," like this: ○.

**State**

Question: Additional rights of crime victims. Shall section 9m of article I of the constitution, which gives certain rights to crime victims, be amended to give crime victims additional rights, to require that the rights of crime victims be protected with equal force to the protections afforded the accused while leaving the federal constitutional rights of the accused intact, and to allow crime victims to enforce their rights in courts?

- Yes
- No

**Rock County**

Question: Should the Wisconsin Legislature create a nonpartisan procedure for the preparation of legislative and congressional district plans and maps?

- Yes
- No

**Official Ballot**

**Presidential Preference Vote  
Nonpartisan Office  
and Referendum**

**April 7, 2020**

for

T. Center Evansville School  
T. Porter Evansville School

**Ballot issued by**

\_\_\_\_\_  
Initials of election inspectors

**Absentee ballot issued by**

\_\_\_\_\_  
Initials of municipal clerk or deputy clerk

If issued by SVDs, both SVDs must initial.

**Certification of Voter Assistance**

I certify that I marked or read aloud this ballot at the request and direction of a voter who is authorized under Wis. Stat. § 6.82 to receive assistance.

\_\_\_\_\_  
Signature of assistor

**For Official Use Only**

**Inspectors:** Identify ballots required to be remade.

**Reason for remaking ballot:**

- Overvoted
- Damaged
- Other

If this is the original ballot —

Write serial number here:  
\_\_\_\_\_

If this is the duplicate ballot —

Write serial number here:  
\_\_\_\_\_

\_\_\_\_\_  
Initials of inspectors who remade ballot

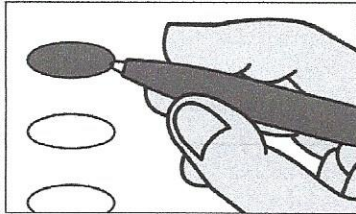
SAMPLE

**Official Ballot**  
**Presidential Preference Vote**  
**Nonpartisan Office and Referendum**  
**April 7, 2020**

S11

**Notice to Voters:** If you are voting on Election Day, your ballot must be initialed by 2 election inspectors. If you are voting absentee, your ballot must be initialed by the municipal clerk or deputy clerk. Your ballot may not be counted without initials. (See end of ballot for initials.)

**General Instructions**



If you make a mistake on your ballot or have a question, ask an election inspector for help. (Absentee voters: Contact your municipal clerk.)

To vote for a name on the ballot, fill in the oval next to the name like this ●.

To vote for a name that is not on the ballot, write the name on the line marked "write-in," and fill in the oval next to the line like this ●.

**Special Instructions for Presidential Preference Vote**

**In the Presidential Preference Vote**

- You may vote for only one candidate.
- You may vote in only ONE party.
- If you vote more than once, your vote will not be counted.

**Choose the party in which you will vote.** Within the party you have chosen, you have ONE of 3 choices:

1. Vote for a candidate whose name is printed on this ballot in the party you have chosen.
2. Vote for an uninstructed delegation from Wisconsin to the national convention of the party you have chosen.
3. Write in the name of another person to become the presidential candidate of the party you have chosen.

**Fill in ONE oval in ONE party.**

**Presidential Preference Vote**

**Choose a party in which to vote.** Fill in the oval next to your party choice, like this: ●. **Choose only 1.**

- Democratic
- Republican

**Democratic Party**

*If you vote in this party, you may not vote in the other party.*

**President of the United States  
Vote for 1**

- Tulsi Gabbard
- Amy Klobuchar
- John Delaney
- Deval Patrick
- Bernie Sanders
- Andrew Yang
- Pete Buttigieg
- Tom Steyer
- Elizabeth Warren
- Michael Bennet
- Michael R. Bloomberg
- Joe Biden
- Uninstructed Delegation
- write-in:

**Republican Party**

*If you vote in this party, you may not vote in the other party.*

**President of the United States  
Vote for 1**

- Donald J. Trump
- Uninstructed Delegation
- write-in:

**End Presidential Preference Vote**

**Judicial**

**Justice of the Supreme Court  
Vote for 1**

- Jill J. Karofsky
- Daniel Kelly
- Write-in

**Court of Appeals Judge  
District 4  
Vote for 1**

- Rachel A. Graham
- Write-in

**County**

**County Board Supervisor  
District 2  
Vote for 1**

- Alan Sweeney
- write-in:

**School District**

**School District of Edgerton  
School Board Member  
Vote for not more than 3**

- Brandon Ferrell
- Tim Shaw
- Leia Maves
- Matt McIntyre
- Jeremiah Johnson
- Write-in
- Write-in
- Write-in

**Turn ballot  
over for  
referendums.**

Presidential Preference Vote begins at top of next column.

Nonpartisan offices begin at top of next column.

Continue voting on other side of ballot.

**SAMPLE**

**Referendum**

To vote in favor of a question, fill in the oval next to "Yes," like this: ●.

To vote against a question, fill in the oval next to "No," like this: ○.

**State**

Question: Additional rights of crime victims. Shall section 9m of article I of the constitution, which gives certain rights to crime victims, be amended to give crime victims additional rights, to require that the rights of crime victims be protected with equal force to the protections afforded the accused while leaving the federal constitutional rights of the accused intact, and to allow crime victims to enforce their rights in courts?

Yes

No

**Rock County**

Question: Should the Wisconsin Legislature create a nonpartisan procedure for the preparation of legislative and congressional district plans and maps?

Yes

No

SAMPLE

**Official Ballot**

**Presidential Preference Vote  
Nonpartisan Office  
and Referendum**

**April 7, 2020**

for

T. Center Edgerton School  
T. Porter Edgerton School

**Ballot issued by**

\_\_\_\_\_  
Initials of election inspectors

**Absentee ballot issued by**

\_\_\_\_\_  
Initials of municipal clerk or deputy clerk

If issued by SVDs, both SVDs must initial.

**Certification of Voter Assistance**

I certify that I marked or read aloud this ballot at the request and direction of a voter who is authorized under Wis. Stat. § 6.82 to receive assistance.

\_\_\_\_\_  
Signature of assistor

**For Official Use Only**

**Inspectors:** Identify ballots required to be remade.

**Reason for remaking ballot:**

- Overvoted
- Damaged
- Other

If this is the original ballot —

Write serial number here:  
\_\_\_\_\_

If this is the duplicate ballot —

Write serial number here:  
\_\_\_\_\_

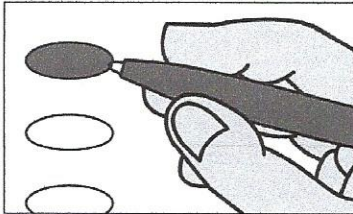
\_\_\_\_\_  
Initials of inspectors who remade ballot

**Official Ballot**  
**Presidential Preference Vote**  
**Nonpartisan Office and Referendum**  
**April 7, 2020**

S12

**Notice to Voters:** If you are voting on Election Day, your ballot must be initialed by 2 election inspectors. If you are voting absentee, your ballot must be initialed by the municipal clerk or deputy clerk. Your ballot may not be counted without initials. (See end of ballot for initials.)

**General Instructions**



If you make a mistake on your ballot or have a question, ask an election inspector for help. (Absentee voters: Contact your municipal clerk.)

To vote for a name on the ballot, fill in the oval next to the name like this ●.

To vote for a name that is not on the ballot, write the name on the line marked "write-in," and fill in the oval next to the line like this ●.

**Special Instructions for Presidential Preference Vote**

**In the Presidential Preference Vote**

- You may vote for only one candidate.
- You may vote in only ONE party.
- If you vote more than once, your vote will not be counted.

**Choose the party in which you will vote.** Within the party you have chosen, you have ONE of 3 choices:

1. Vote for a candidate whose name is printed on this ballot in the party you have chosen.
2. Vote for an uninstructed delegation from Wisconsin to the national convention of the party you have chosen.
3. Write in the name of another person to become the presidential candidate of the party you have chosen.

**Fill in ONE oval in ONE party.**

**Presidential Preference Vote**

**Choose a party in which to vote.** Fill in the oval next to your party choice, like this: ●. **Choose only 1.**

- Democratic
- Republican

**Democratic Party**

*If you vote in this party, you may not vote in the other party.*

**President of the United States Vote for 1**

- Tulsi Gabbard
- Amy Klobuchar
- John Delaney
- Deval Patrick
- Bernie Sanders
- Andrew Yang
- Pete Buttigieg
- Tom Steyer
- Elizabeth Warren
- Michael Bennet
- Michael R. Bloomberg
- Joe Biden
- Uninstructed Delegation
- write-in:

**Republican Party**

*If you vote in this party, you may not vote in the other party.*

**President of the United States Vote for 1**

- Donald J. Trump
- Uninstructed Delegation
- write-in:

**End Presidential Preference Vote**

**Judicial**

**Justice of the Supreme Court Vote for 1**

- Jill J. Karofsky
- Daniel Kelly
- Write-in

**Court of Appeals Judge District 4 Vote for 1**

- Rachel A. Graham
- Write-in

**County**

**County Board Supervisor District 2 Vote for 1**

- Alan Sweeney
- write-in:

**School District**

**Parkview School District School Board Member Vote for not more than 3**

- Amanda Vogt
- Donald A. Bomkamp
- Clay Hammes
- Tina Suiter-Meyers
- Write-in
- Write-in
- Write-in

**SAMPLE**

**Turn ballot over for referendums.**

Presidential Preference Vote begins at top of next column.

Nonpartisan offices begin at top of next column.

Continue voting on other side of ballot.

**Referendum**

To vote in favor of a question, fill in the oval next to "Yes," like this: ●.

To vote against a question, fill in the oval next to "No," like this: ○.

**State**

Question: Additional rights of crime victims. Shall section 9m of article I of the constitution, which gives certain rights to crime victims, be amended to give crime victims additional rights, to require that the rights of crime victims be protected with equal force to the protections afforded the accused while leaving the federal constitutional rights of the accused intact, and to allow crime victims to enforce their rights in courts?

- Yes
- No

**Rock County**

Question: Should the Wisconsin Legislature create a nonpartisan procedure for the preparation of legislative and congressional district plans and maps?

- Yes
- No

Continue voting at top of next column.

**Referendum Cont.**

**Parkview School District**

Question: Shall the Parkview School District, Rock County, Wisconsin be authorized to exceed the revenue limit specified in Section 121.91, Wisconsin Statutes, by \$825,000 for the 2020-2021 school year, by \$1,025,000 for the 2021-2022 school year, and by \$1,150,000 for the 2022-2023 school year, for non-recurring purposes consisting of technology and curriculum materials, educational programming, expenses associated with bus routes, and costs associated with recruiting and retaining staff?

- Yes
- No

**Official Ballot**

**Presidential Preference Vote  
Nonpartisan Office  
and Referendum**

**April 7, 2020**

for

T. Center Parkview School

**Ballot issued by**

\_\_\_\_\_

Initials of election inspectors

**Absentee ballot issued by**

\_\_\_\_\_

If issued by SVDs, both SVDs must initial.

**Certification of Voter Assistance**

I certify that I marked or read aloud this ballot at the request and direction of a voter who is authorized under Wis. Stat. § 6.82 to receive assistance.

Signature of assistor

**For Official Use Only**

**Inspectors:** Identify ballots required to be remade.

**Reason for remaking ballot:**

- Overvoted
- Damaged
- Other

If this is the original ballot —

Write serial number here:

\_\_\_\_\_

If this is the duplicate ballot —

Write serial number here:

\_\_\_\_\_

Initials of inspectors who remade ballot

SAMPLE