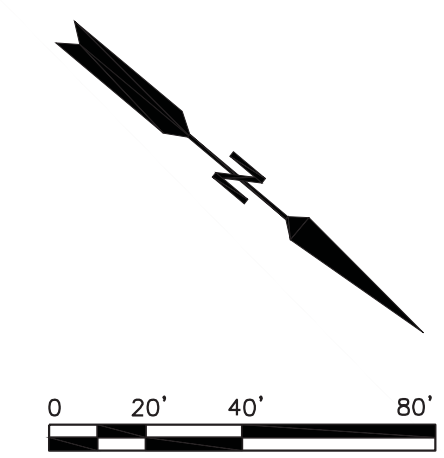


KEY PLAN  
SCALE: 1" = 2000'

LEGEND

- CONSTRUCTION LIMITS
- ROAD RIGHT-OF-WAY
- P/L PROPERTY LINE
- EARTHEN LEVEE
- I-WALL
- T-WALL
- COMBI-WALL
- CANAL GATE
- ROADWAY GATE



CONTINUES ALONG  
RIVERBANK ROUGHLY 50 FEET  
FURTHER DOWNSTREAM

STREAM BANK MODIFICATION  
(SELECTIVE CLEARING, JOINT  
PLANTING)

WHITE RIVER

CENTRAL CANAL

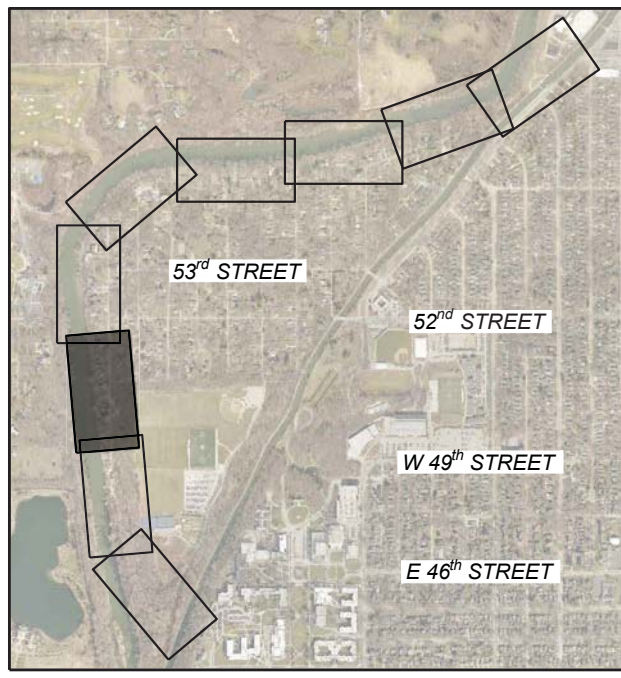
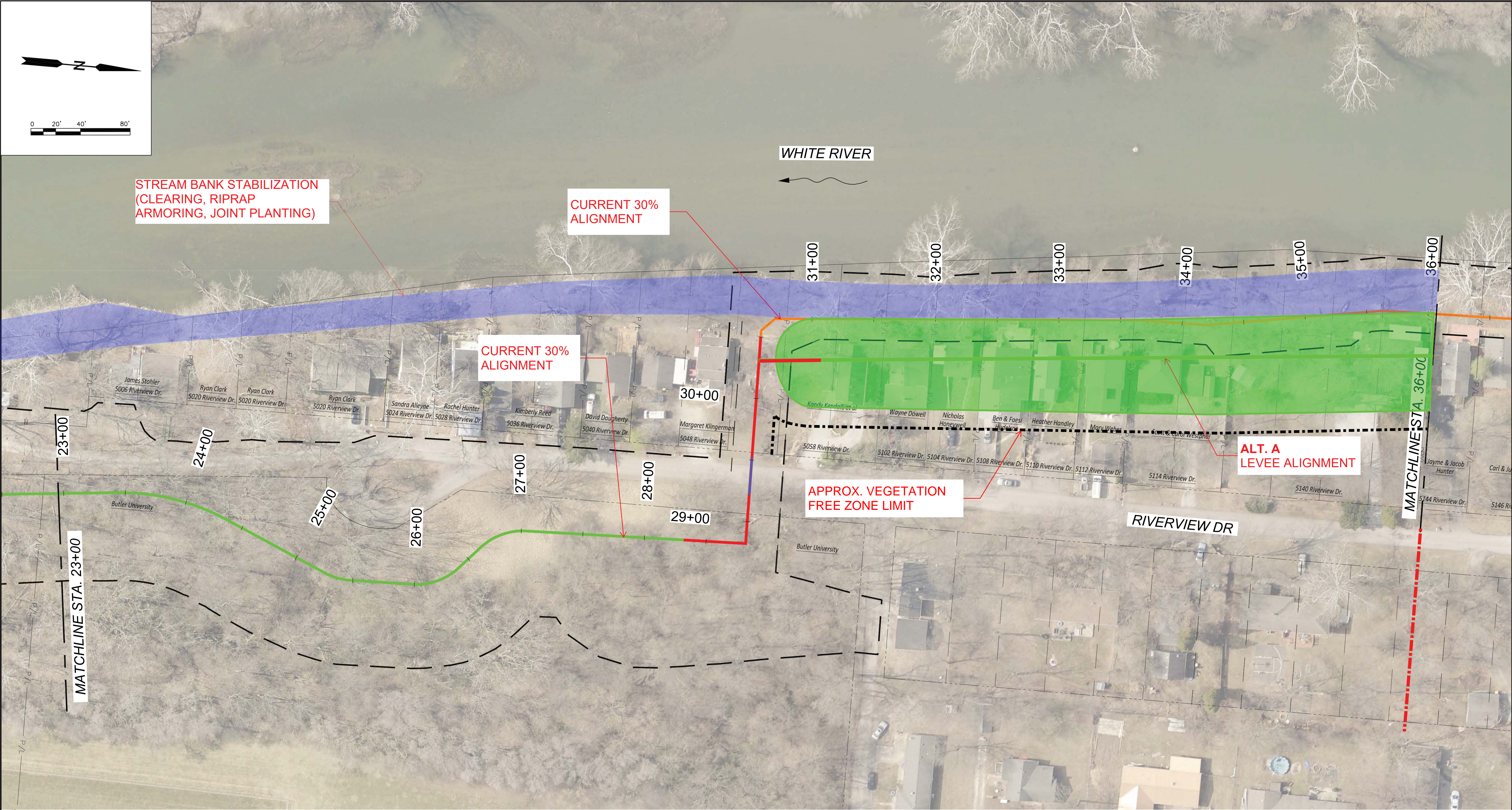
MATCHLINE STA. 12+00

DESIGNED BY: _____		PRELIMINARY NOT FOR CONSTRUCTION	NO.	REVISION	DATE	BY
DRAWN BY: _____						
CHECKED BY: _____						
REVIEWED BY: _____						
DATE: NOVEMBER 2024						
Department of Public Works City of Indianapolis 1200 Madison Avenue, Ste 200 Indianapolis, IN 46225						
ARCADIS Burke Arcadis US, Inc. 150 W. Market Street Indianapolis, IN 46204 (317) 231-6500 ARCADIS JOB NO. 30082741						
WHITE RIVER - ROCKY RIPPLE FLOOD CONTROL IMPROVEMENT DISTRICT FLOOD RISK REDUCTION PROJECT		AERIAL PHOTOGRAPH STA. 0+00 TO STA. 12+00				
DRAWING		G-101				





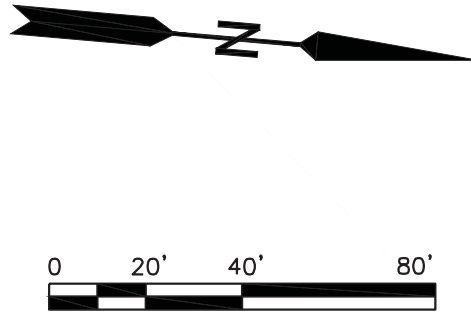




KEY PLAN  
SCALE: 1" = 2000'

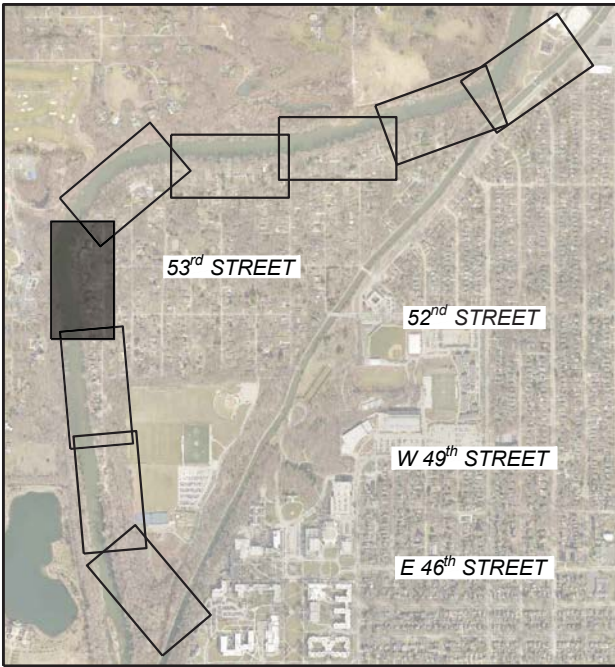
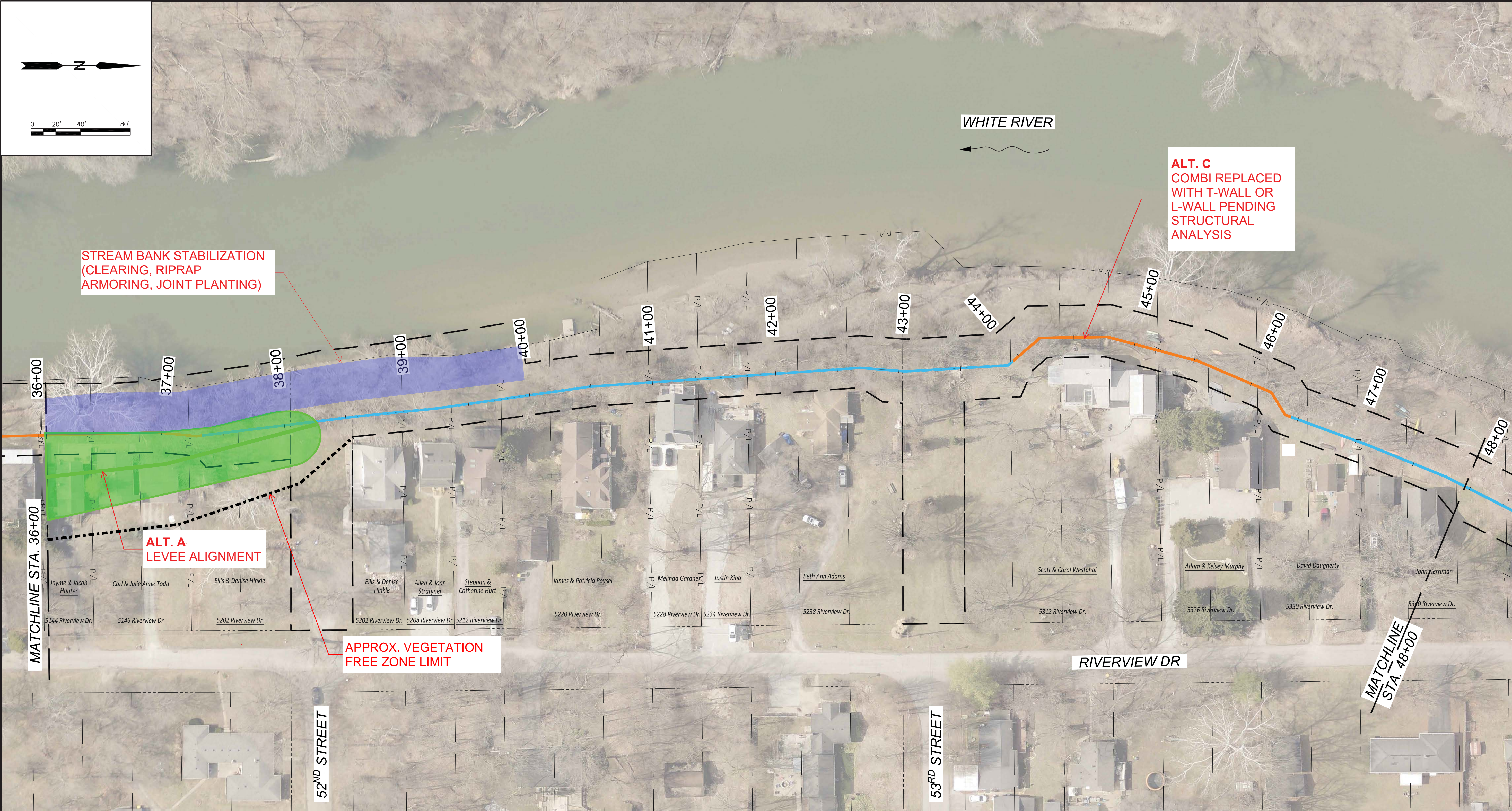
LEGEND

- CONSTRUCTION LIMITS
- ROAD RIGHT-OF-WAY
- P/L PROPERTY LINE
- EARTHEN LEVEE
- I-WALL
- T-WALL
- COMBI-WALL
- CANAL GATE
- ROADWAY GATE



DESIGNED BY: _____		PRELIMINARY NOT FOR CONSTRUCTION	NO.	REVISION	DATE	BY
DRAWN BY: _____						
CHECKED BY: _____						
REVIEWED BY: _____						
DATE: NOVEMBER 2024						
Department of Public Works City of Indianapolis 1200 Madison Avenue, Ste 200 Indianapolis, IN 46225						
						
 <b>ARCADIS</b> Arcadis US, Inc. 150 W. Market Street Indianapolis, IN 46204 (317) 231-6500 ARCADIS JOB NO. 30082741						
WHITE RIVER - ROCKY RIPPLE FLOOD CONTROL IMPROVEMENT DISTRICT FLOOD RISK REDUCTION PROJECT		AERIAL PHOTOGRAPH STA. 23+00 TO STA. 36+00				
DRAWING		G-103				





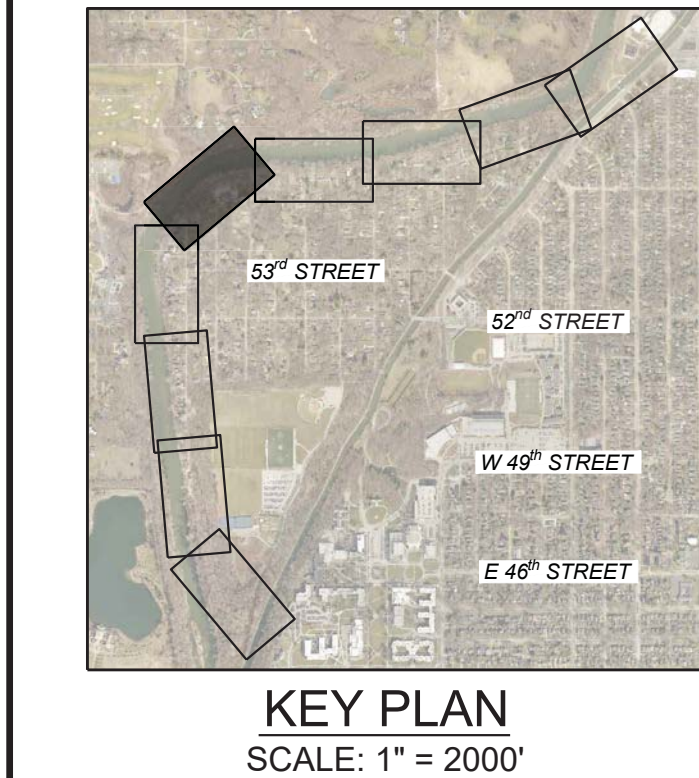
KEY PLAN  
SCALE: 1" = 2000'

LEGEND

- CONSTRUCTION LIMITS
- ROAD RIGHT-OF-WAY
- P/L PROPERTY LINE
- EARTHEN LEVEE
- I-WALL
- T-WALL
- COMBI-WALL
- CANAL GATE
- ROADWAY GATE

DESIGNED BY: _____		PRELIMINARY NOT FOR CONSTRUCTION	NO.	REVISION	DATE	BY
DRAWN BY: _____						
CHECKED BY: _____						
REVIEWED BY: _____						
DATE: NOVEMBER 2024						
Department of Public Works City of Indianapolis 1200 Madison Avenue, Ste 200 Indianapolis, IN 46225						
						
 ARCADIS US, Inc. 150 W. Market Street Indianapolis, IN 46204 (317) 231-6500 ARCADIS JOB NO. 30082741						
WHITE RIVER - ROCKY RIPPLE FLOOD CONTROL IMPROVEMENT DISTRICT FLOOD RISK REDUCTION PROJECT		AERIAL PHOTOGRAPH STA. 36+00 TO STA. 48+00				
DRAWING		G-104				

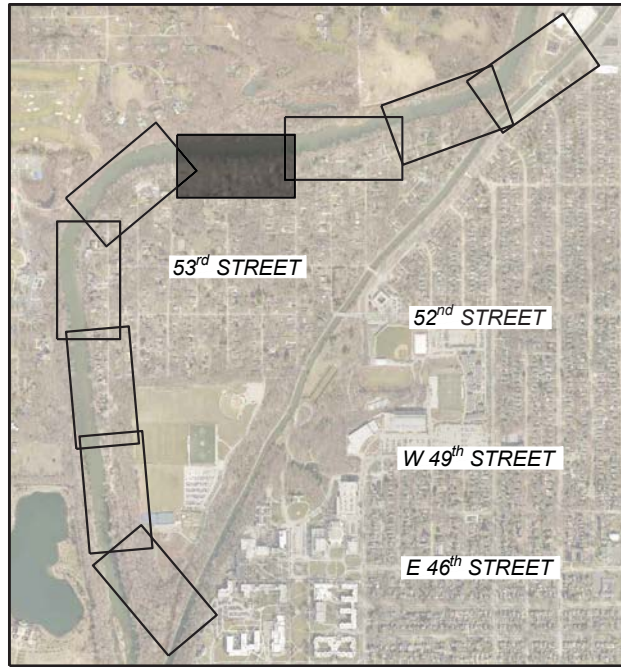
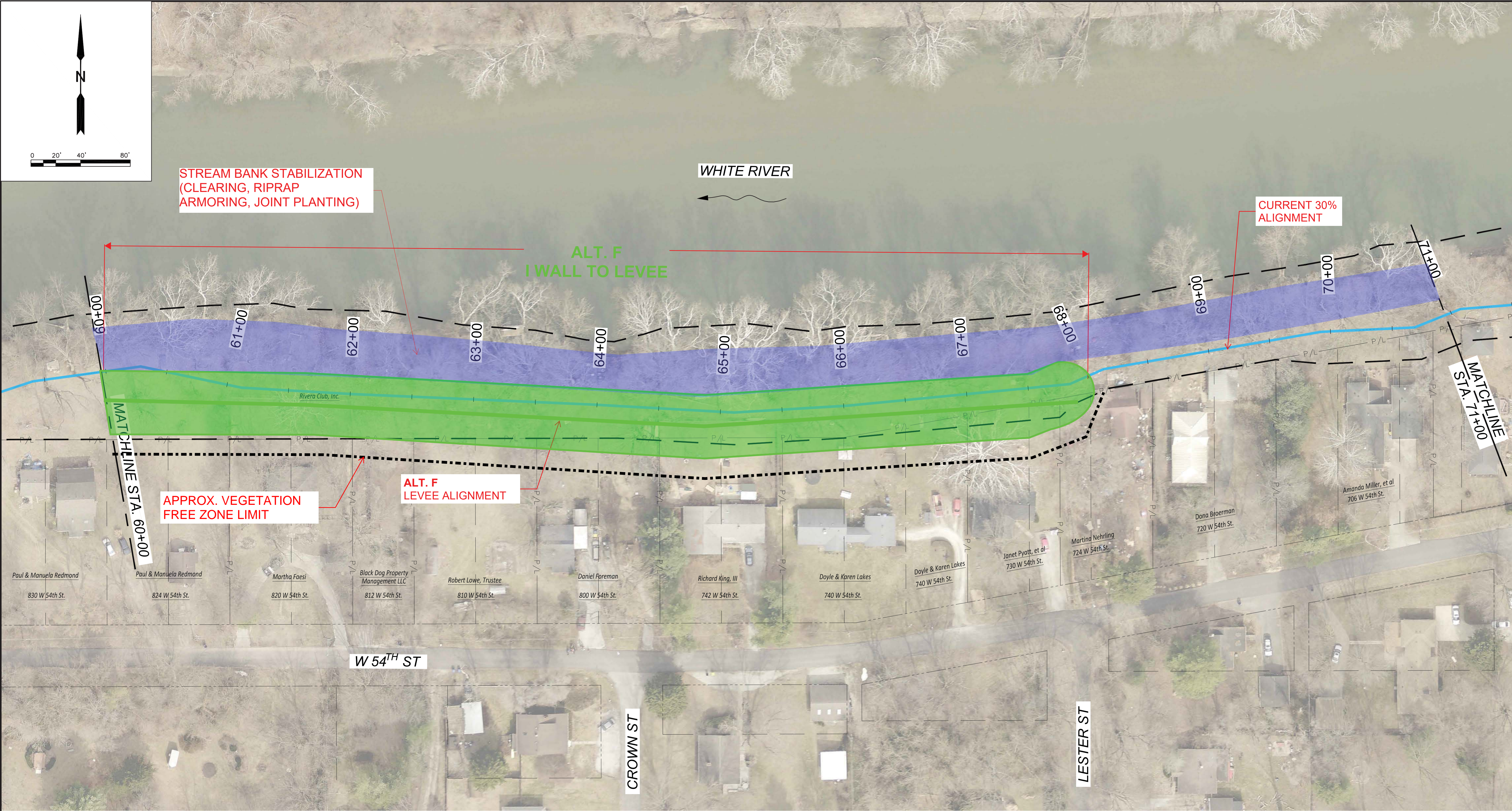




LEGEND	
	CONSTRUCTION LIMITS
	ROAD RIGHT-OF-WAY
	P/L — PROPERTY LINE
	EARTHEN LEVEE
	I-WALL
	T-WALL
	COMBI-WALL
	CANAL GATE
	ROADWAY GATE

DESIGNED BY: _____		PRELIMINARY NOT FOR CONSTRUCTION	NO.	DATE	BY				
DRAWN BY: _____									
CHECKED BY: _____									
REVIEWED BY: _____									
DATE: NOVEMBER 2024									
Department of Public Works City of Indianapolis 1200 Madison Avenue, Ste 200 Indianapolis, IN 46225									
 ARCADIS US, Inc. 150 W. Market Street Indianapolis, IN 46204 (317) 231-6500 ARCADIS JOB NO. 30082741									
WHITE RIVER - ROCKY RIPPLE FLOOD CONTROL IMPROVEMENT DISTRICT FLOOD RISK REDUCTION PROJECT									
DRAWING									
AERIAL PHOTOGRAPH STA. 48+00 TO STA. 60+00									
G-105									





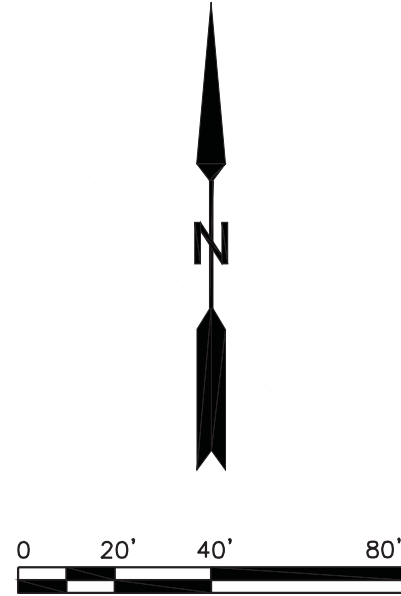
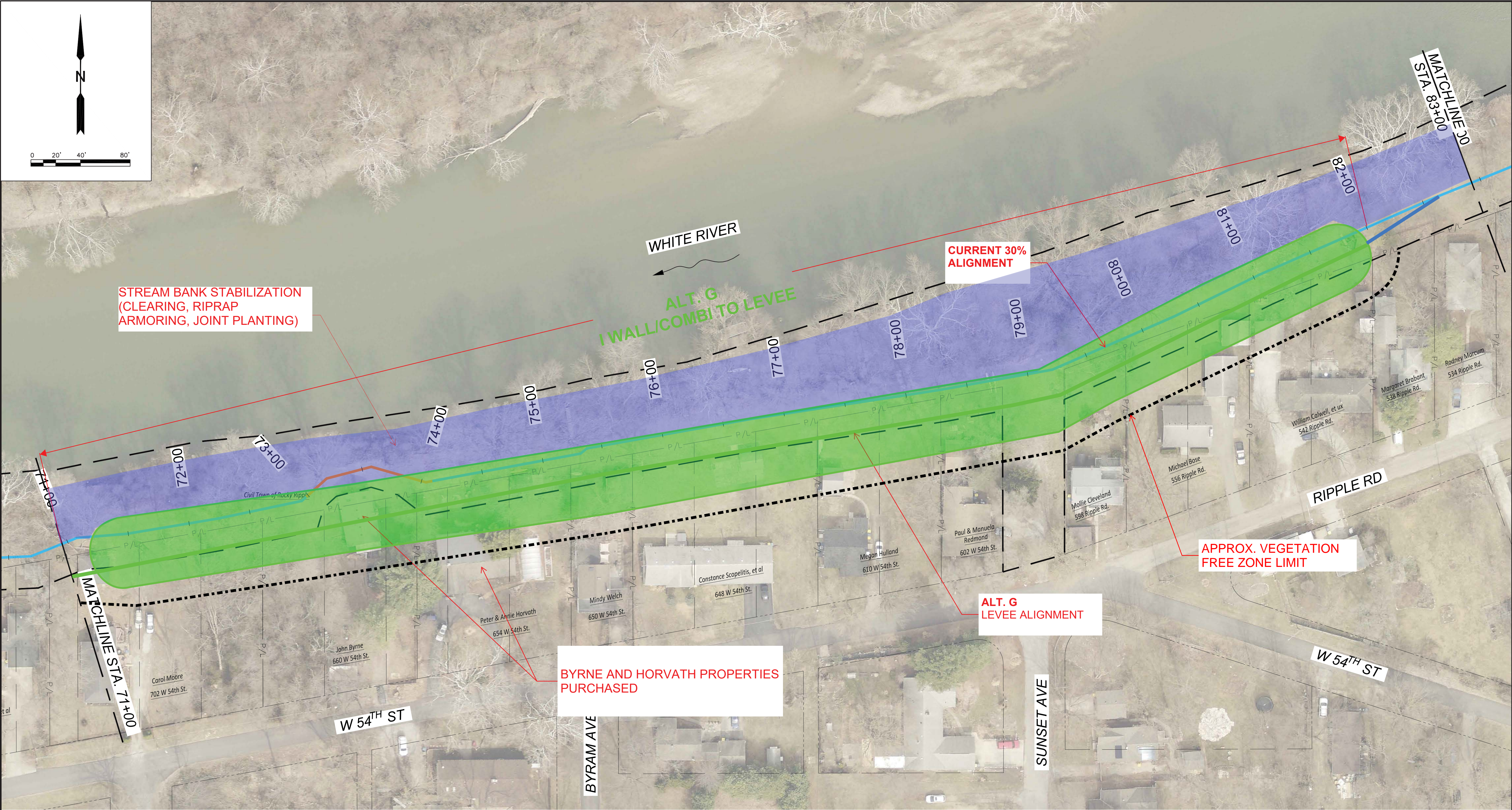
KEY PLAN  
SCALE: 1" = 2000'

LEGEND

- CONSTRUCTION LIMITS
- ROAD RIGHT-OF-WAY
- P/L PROPERTY LINE
- EARTHEN LEVEE
- I-WALL
- T-WALL
- COMBI-WALL
- CANAL GATE
- ROADWAY GATE

DESIGNED BY: _____		PRELIMINARY NOT FOR CONSTRUCTION	NO.	REVISION	DATE	BY
DRAWN BY: _____						
CHECKED BY: _____						
REVIEWED BY: _____						
DATE: NOVEMBER 2024						
 ARCADIS US, Inc. 150 W. Market Street Indianapolis, IN 46204 (317) 231-6500 ARCADIS JOB NO. 30082741		 Department of Public Works City of Indianapolis 1200 Madison Avenue, Ste 200 Indianapolis, IN 46225				
WHITE RIVER - ROCKY RIPPLE FLOOD CONTROL IMPROVEMENT DISTRICT FLOOD RISK REDUCTION PROJECT		AERIAL PHOTOGRAPH STA. 60+00 TO STA. 71+00		DRAWING		G-106





STREAM BANK STABILIZATION  
(CLEARING, RIPRAP  
ARMORING, JOINT PLANTING)

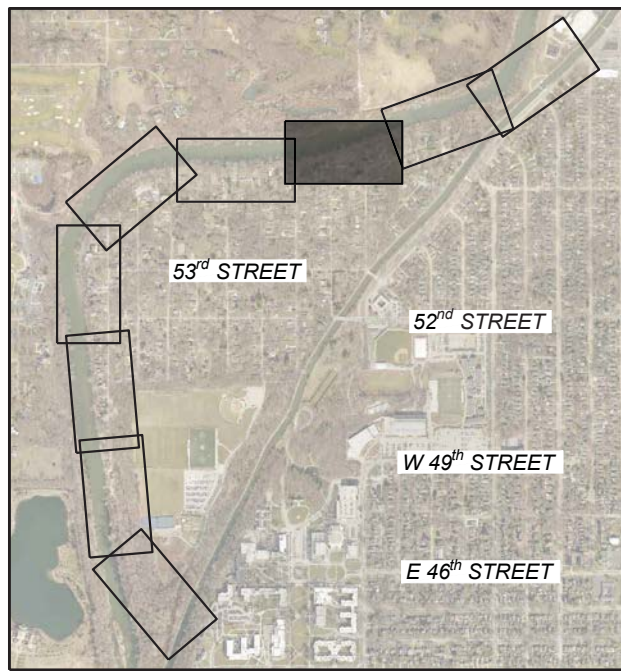
ALT. G  
I WALL/COMBI TO LEVEE

CURRENT 30%  
ALIGNMENT

APPROX. VEGETATION  
FREE ZONE LIMIT

ALT. G  
LEVEE ALIGNMENT

BYRNE AND HORVATH PROPERTIES  
PURCHASED



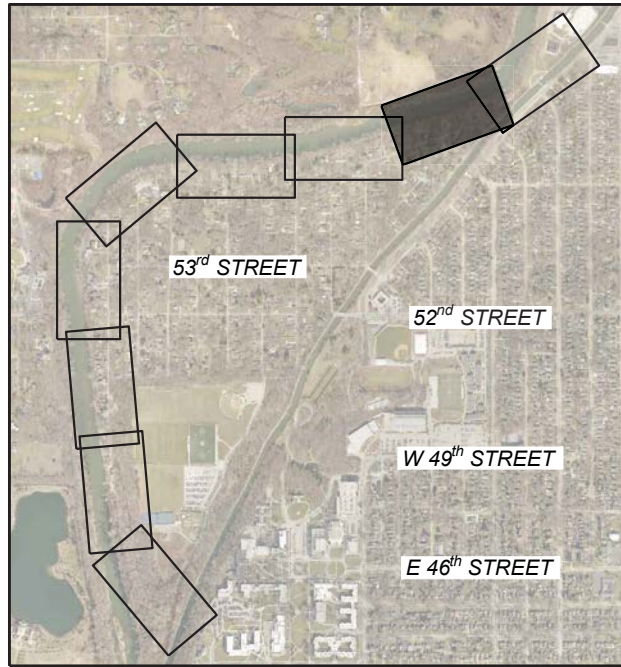
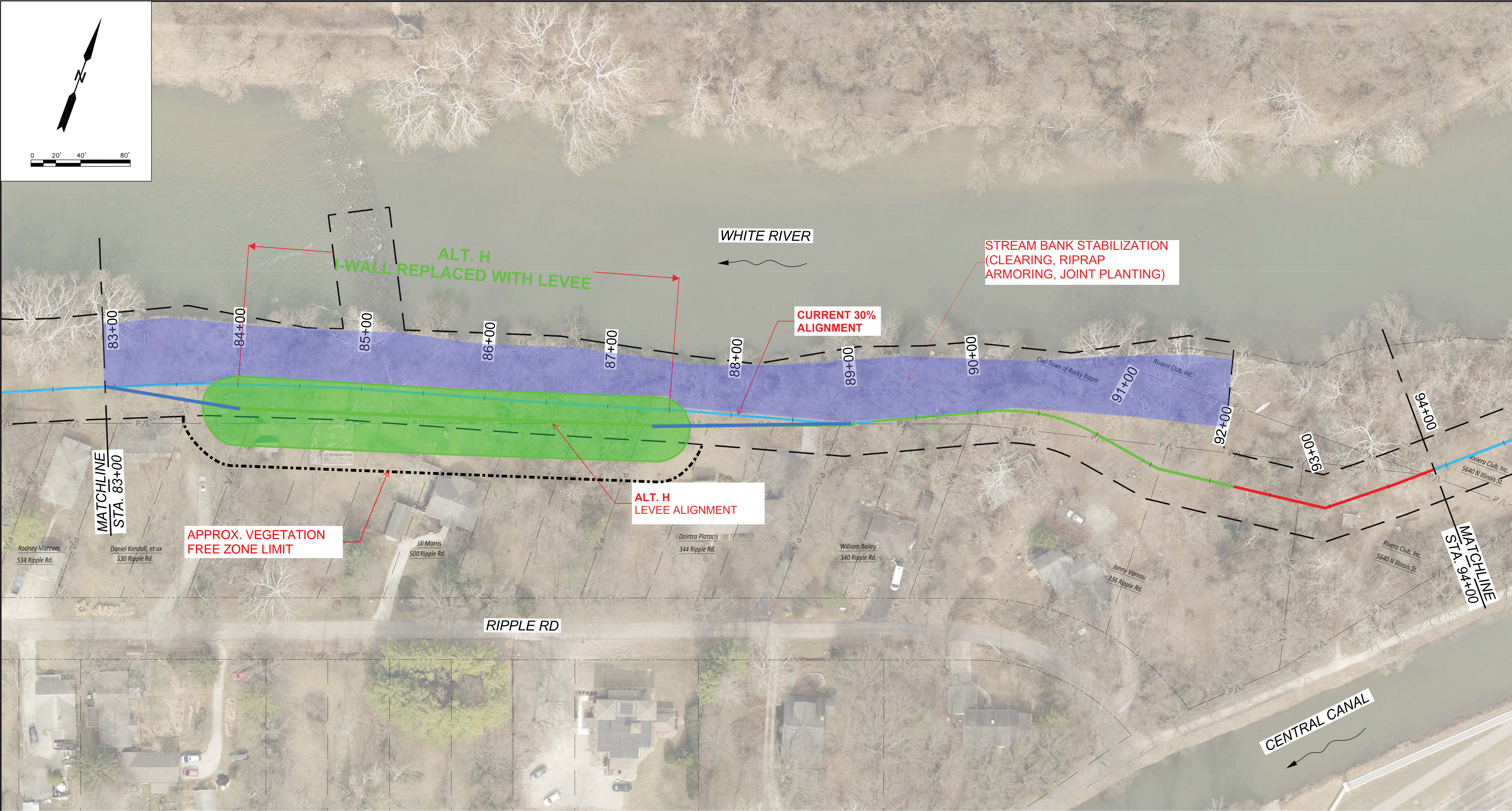
KEY PLAN  
SCALE: 1" = 2000'

LEGEND

- CONSTRUCTION LIMITS
- ROAD RIGHT-OF-WAY
- P/L PROPERTY LINE
- EARTHEN LEVEE
- I-WALL
- T-WALL
- COMBI-WALL
- CANAL GATE
- ROADWAY GATE

DESIGNED BY: _____		PRELIMINARY NOT FOR CONSTRUCTION	NO.	REVISION	DATE	BY		
DRAWN BY: _____								
CHECKED BY: _____								
REVIEWED BY: _____								
DATE: NOVEMBER 2024								
Department of Public Works City of Indianapolis 1200 Madison Avenue, Ste 200 Indianapolis, IN 46225		INDIANAPOLIS OFFICIAL CITY SEAL						
ARCADIS Burke Arcadis US, Inc. 150 W. Market Street Indianapolis, IN 46204 (317) 231-6500 ARCADIS JOB NO. 30082741		WHITE RIVER - ROCKY RIPPLE FLOOD CONTROL IMPROVEMENT DISTRICT FLOOD RISK REDUCTION PROJECT					AERIAL PHOTOGRAPH STA. 71+00 TO STA. 83+00	
DRAWING		G-107						



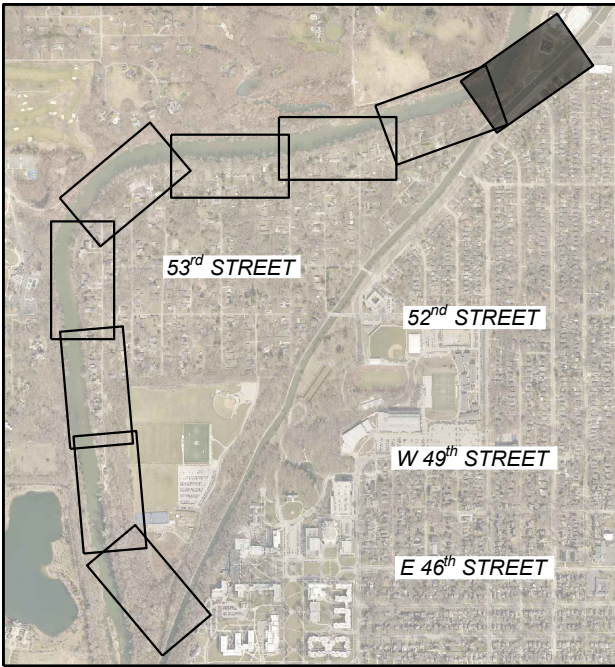


LEGEND

- CONSTRUCTION LIMITS
- ROAD RIGHT-OF-WAY
- P/L PROPERTY LINE
- EARTHEN LEVEE
- I-WALL
- T-WALL
- COMBI-WALL
- CANAL GATE
- ROADWAY GATE

DRAWING	G-108	WHITE RIVER - ROCKY RIPPLE FLOOD CONTROL IMPROVEMENT DISTRICT FLOOD RISK REDUCTION PROJECT  AERIAL PHOTOGRAPH STA. 83+00 TO STA. 94+00	<div><div><div></div><div>Arcadis US, Inc. 150 W. Market Street Indianapolis, IN 46204 (317) 231-6500 ARCADIS JOB NO. 30082741</div></div></div>	<div><div>OFFICIAL CITY ENGINEER <b>INDIANAPOLIS</b> OFFICIAL CITY ENGINEER JULIE A. BURKE FEB 14, 2025</div></div> <div>Department of Public Works City of Indianapolis 1200 Madison Avenue, Ste 200 Indianapolis, IN 46225</div>	DESIGNED BY: _____	PRELIMINARY NOT FOR CONSTRUCTION	NO.	REVISION	DATE	BY
					DRAWN BY: _____					
					CHECKED BY: _____					
					REVIEWED BY: _____					
					DATE: NOVEMBER 2024					





KEY PLAN  
SCALE: 1" = 2000'

- LEGEND
- CONSTRUCTION LIMITS
  - ROAD RIGHT-OF-WAY
  - P/L PROPERTY LINE
  - EARTHEN LEVEE
  - I-WALL
  - T-WALL
  - COMBI-WALL
  - CANAL GATE
  - ROADWAY GATE

DESIGNED BY: _____		PRELIMINARY NOT FOR CONSTRUCTION	NO.	REVISION	BY
DRAWN BY: _____					
CHECKED BY: _____					
REVIEWED BY: _____					
DATE: NOVEMBER 2024					
Department of Public Works City of Indianapolis 1200 Madison Avenue, Ste 200 Indianapolis, IN 46225					
 INDIANAPOLIS OFFICIAL CITY ENGINEER					
 ARCADIS US, Inc. 150 W. Market Street Indianapolis, IN 46204 (317) 231-6500 ARCADIS JOB NO. 30082741					
WHITE RIVER - ROCKY RIPPLE FLOOD CONTROL IMPROVEMENT DISTRICT FLOOD RISK REDUCTION PROJECT		AERIAL PHOTOGRAPH STA. 93+00 TO STA. 98+66			
DRAWING		G-109			