



**VILLAGE OF NORTH CHEVY CHASE
MONTHLY NEWSLETTER
SEPTEMBER 2019**

SEPTEMBER VILLAGE MEETING

September 17, 2019; 8 PM; NCC Christian Church *Approval of July Mtg Min *Treasurer's Report * Permits *Kensington Pkwy/Montrose Pedestrian Signage * Recycling Bins *National Flood Insurance *Capital Budget – street lighting, street repaving, sidewalks

IMPORTANT NOTICES

Recycling

The Village's waste and recycling vendor, Montgomery County Sanitation and Recycling, has informed the Village that, based on a recent cost analysis, they will no longer offer single stream recycling due to the cost and waste factors involved. The vendor is providing dual stream recycling services for its other clients, which include Garrett Park and Chevy Chase Sections 3 and 5, where recyclables are taken to the Shady Grove Processing Facility and Transfer Station. While this will require a bit more effort on the part of residents to ensure their recyclables are separated, dual stream is ultimately more effective, as there is less contamination and recyclables are of higher

quality, increasing the likelihood the materials can be recycled into new products.

All residents should already have a blue bin, which should be used for aluminum foil products, cans – aluminum, steel, bi-metal, glass bottles and jars, plastic bottles, containers, tubs and lids. Residents should also have a 65-gallon recycling container which should now only be used for paper, cardboard and carton. Attached to this newsletter is a

VILLAGE COUNCIL

Chair: Adrian Andreassi
chair@northchevychase.org
Vice Chair: Brian Hoffner
vicechair@northchevychase.org
Secretary: Maury Mechanick
secretary@northchevychase.org
Treasurer: Chas Stuart
treasurer@northchevychase.org
Member: Fern Lapidus
member@northchevychase.org
Manager: Dana Peterson
nccinfo@northchevychase.org
Fire Board Representatives:
Dave Albinson, Anne Fox, Abby Morris
Village of North Chevy Chase
PO Box 15887, Chevy Chase, MD 20815
Mobile: 301-654-7084
TDD (MD Relay Service): 1-800-735-2258
Website: www.northchevychase.org

flyer detailing the dual stream requirements. Additional information can be obtained from the following website:

<https://www.montgomerycountymd.gov/SWS/recycling/blue-bin-items.html>

Please note that plastic bags – even those labeled as recyclable – are prohibited in any recycle bin.

The conversion to dual stream recycling will become effective for the **Wednesday, October 2 recycling pick-up** onwards. The Village is looking into obtaining blue, 30-gallon wheeled bins for the glass/plastic/aluminum as well but there is a significant cost factor involved in procuring them, which will be discussed at the September Council meeting. Please email the Village Manager if there are any questions.

Kensington Parkway Traffic Violations -

Village management spoke with a traffic officer with Montgomery County Police Department's Bethesda station about through traffic of trucks exceeding the $\frac{3}{4}$ ton limit along Kensington Parkway, which is prohibited. The Village was informed that citations can only be issued if a law enforcement officer witnesses the infraction so if residents see vehicles of concern, they should contact 240-773-6700 or the Village Manager. The Officer noted that the police have received requests to monitor speeding on the Parkway. They have done studies and "only a couple of cars are truly speeding". He also noted that there have been a number of violations at the 4-way stop at

Inverness/Kensington Pkwy, with about 50% being residents and 50% drive-through traffic. The Officer highlighted that Kensington Pkwy is part of his and other officers' rotations and they will continue to monitor traffic violations regularly, often in unmarked cars.

Capital Crescent Trail – Per an article in Bethesda Magazine, the Capital Crescent Trail could open one year before the Purple Line opens (late 2022 or 2023) according to the CEO of the public-private partnership Purple Line Transit Partners. He also noted that the new trail will be paved, vary in width from 10-12 feet and stretch 4.3 miles. There will also be 23 public access points along the trail.

I-495 Managed Lane Study – State transportation officials voted on July 24 to consider alternatives to beltway widening. One proposal includes extending express toll lanes across the American Legion Bridge to the Intercounty Connector in Gaithersburg to help bypass traffic along the Montgomery County stretch of I-495.

Landscaping/Storm Drains - Village management confirmed that its landscape vendor controls weeds in Village areas with a vinegar and dish soap solution (versus Roundup). While this can help control weeds, it does not always eradicate them; however, the health and safety of residents is of greater priority. The Village has requested that its lawn/landscaping contractor include as part of its weekly servicing, removal of debris from 3 storm drains – 2 on the 3700 block of Kenilworth and a drain at the diverter at Stewart/Montgomery, which are particularly prone to clogging. Residents are encouraged

to bag leaves from their property and sidewalks, which can clog the drains. Residents are also requested to alert Village management of any flooding issues around the drains.

Village listserv - The Village has transitioned to Constant Contact for Village communication. An electronic version of this newsletter has been distributed to all residents whose contact information the Village Manager has on file. If you did not receive an email with the newsletter from the Village, please contact the Village Manager at nccinfo@northchevychase.org with your email, address (and ideally a phone number) so you can be added. It is important that Village management have contact information for all residents, particularly to notify about meeting agendas, traffic issues around construction sites, planned leaf and snow removal, utility issues, and updates on public policies affecting the Village. Residents are encouraged to utilize NCC Connections to relay and receive information about social events.

Creekside Townhome Development
(Kensington Pkwy after I-495 overpass, Montgomery County) The developers provided the following update on the work: The project is moving closer to vertical construction. The first block of townhomes has been submitted for building permit approval. The utilities and grading of the site are ongoing. Curb, gutter, and paving of the new entrance is on track to be complete by mid to late September. Features of the 16 townhomes include elevators, 2-car garages, energy saving features, Smart Home pre-wiring, and rooftop decks on select models. Community features will include a pergola, benches, and an extensive landscape design. The following

website provides additional information:
www.creeksidechevychase.com.

New Residents – The Village extends a warm welcome to the following new residents:

8900 block Kensington Pkwy: Dennis and Karen Sandstedt and their 2 sons Will (22) and John (21)

8800 Block Montgomery Ave: Aaron Dominguez and Julie Abo

3700 Block Stewart Dr: Don and Allison Muller and their 3 children, Jack (10), Cole (7) and Finn (4)

SUSTAINABLE LIVING

(Courtesy of the Village's Environment Committee)

Getting rid of poison ivy without chemicals

Pesticides are often used to kill poison ivy but aren't always the best option. Montgomery County's 2015 pesticide law requires county-wide, pesticide-free organic lawn-care management in recognition of pesticides' "detrimental effect on human health and the environment and, in particular, [their] developmental effects on children." Montgomery County's new pesticide law restricts the use of Roundup and other non-organic pesticides for weeds and lawns. The County is advising residents and lawncare companies to "immediately transition to organic lawn care". For poison ivy, though, pesticides are still an option: the law exempts from the restrictions weeds like poison ivy that can endanger health. But this legal pesticide use creates its own health risks. There are natural, effective ways to get rid of poison ivy without the harmful chemicals:

Avoid using Roundup – Roundup is the long-standing pesticide of choice for killing poison

ivy, but health agencies are calling its safety into question. The World Health Organization and the International Agency for Research on Cancer consider Roundup to be a probable human carcinogen. In recent lawsuits, home gardeners and groundskeepers with non-Hodgkin's lymphoma have been awarded significant damages for Monsanto's failure to warn about cancer risks from spraying Roundup. New studies find that women's Roundup exposures lead to their babies being born earlier and smaller. Avoiding the use of Roundup in your yard is the best way to reduce your family's risk.

Pull up the plant – Pulling up poison ivy plants is the most effective, non-chemical option. Wear long pants, long-sleeved shirts and gloves (rubber or heavy cotton). Use a shovel or spade to loosen the roots. Remove the whole plant – leaves, stems, roots. Place the plant in a plastic bag and throw it away with your household trash. Anything that contacts the plant should be washed afterwards. Wash clothes and gloves separate from other laundry. Wash garden tools with rubbing alcohol or soapy water. Clean boots or shoes with soapy water and a garden hose.

Spray plants with a vinegar solution – For small poison ivy plants, spraying household vinegar mixed with water on the leaves and stems begins to kill the plant within a day. Use a solution of 4-parts water to 1-part white vinegar. You may have to spray more than once, and then spray again if the plant re-sprouts from the roots. If plants are quite mature, household vinegar may not be strong enough. You can buy more concentrated, vinegar-based solutions. These commercial solutions are quite corrosive – be sure to follow label directions and protect your eyes and skin.

Don't use these strong solutions in areas that harbor urban wildlife like toads and salamanders.

Cut poison ivy vines from trees – If uncontrolled, poison ivy plants can become thick vines on trees. (See, for example: www.poison-ivy.org/climbing-poison-ivy.) Wearing gloves and protective clothing, use garden clippers to cut all ivy vines around the base of the tree. You may need a small hand saw for any larger vines. Make another cut about two feet higher, cutting the vines all the way around the tree again. Remove the cut section so that you can see the bark. Do not pull the vines above; that damages the bark. The remaining vines will die and fall off over time. Bag all plant material and wash all gear, as detailed above.

Also, please find attached a flyer related to cutting vines from your trees.

HIGHLIGHTS FROM JULY VILLAGE

ANNUAL MEETING (*Please note that official minutes will be approved at the next Village mtg and will be posted on the website after*)

Meeting Minutes June 2019 – approved.

Treasurer's Report: Results for June 2019, constituting the end of the Village's 2019 fiscal year, included income of \$44,568 and combined operating expenses of \$20,680 (including waste removal, wages and taxes, landscaping and mowing, street lighting, professional fees and membership and dues). Fiscal year to date revenues through June 2019 of \$389,424 have exceeded expenses of \$205,244 by \$184,180. Total current assets as of June 2019, consisting of operating balance plus reserves, come to \$1,472,631.26.

Permits:

- 3712 Kenilworth Driveway — New home construction and demolition of existing home – approved, with payment of security deposit and with agreement of site management conditions addressing measures to restore Village tree canopy on the property; to safeguard accompanying authorization of removal of one Village oak tree from Village right-of-way; to protect adjacent silver maple Village tree and other surrounding mature trees; to defer proposed future slab-on-grade structure foundation until such time as separate permit for structure is submitted; and to ensure traffic flow along Kenilworth, particularly given that it serves as a school bus route.
- 3603 Dundee Driveway — Backyard addition for master bedroom/en suite bathroom –approved, with agreement of standard Village site management conditions and payment of required security deposit.
- 8819 Kensington Pkwy – New fence – approved.

Kensington Parkway Pedestrian Signs –

Costs associated with ground-level lighted crosswalk at Montrose/Kensington Parkway intersection (upwards of \$50,000 with risk of damage from snow plows) make that an unattractive alternative; consideration to be given to lighted crosswalk signage instead. The Village is awaiting results from a complimentary solar power survey at the site to determine if there is sufficient sunlight for

solar-powered signage. Other alternatives for improved safety at that intersection also remain under consideration, including measures to address “blocking the box” traffic congestion at that intersection, particularly during morning rush hour and a no-cost speed camera installation along Kensington Parkway.

Permit Fees – There was continuing discussion of Village permitting fees as set forth in Village Regulations, including consideration of permit fees from surrounding communities as well as the specific needs and characteristics of the Village related to the imposition of such fees. Village management should have updated information from surrounding municipalities for an upcoming Council meeting on fees and staffing structures with respect to permit review and code enforcement to further inform the discussion.

Sustainable Maryland – The Village adopted a resolution (posted on web with July meeting minutes) approving Village participation in Sustainable Maryland, a no-cost certification program for Maryland municipalities oriented to assisting communities with sustainability efforts to go green, reduce costs and conserve resources while promoting community resiliency.

Tree Maintenance – The following work was performed on Village trees within the Village right-of-way during the month of August:

- Removal of dead dogwood intertwined with mulberry at 3715 Kenilworth Drwy
- Crown clean of red oak at northside of 8907 Montgomery Ave.

- Crown clean of pin oak near 3803 Montrose Dr
- Crown clean of Alder at 3704 Stewart

Please note that Village management, Councilmembers, and some residents on the Environment Committee will be doing a walk through the Village with Titan Tree Care's arborist in early September to update a survey of Village trees. For those areas where Village trees were removed in the past 18 months, the Village has reached out to impacted residents to get input on tree replacements. The Village plans to start ordering new trees with Stadler Nurseries at the end of September.

ZTA 19-01 (Accessory Dwelling Units) – Montgomery County Council approved ZTA 19-01 on July 23. The Village will be consulting with its legal counsel (Ron Bolt) to determine what measures the Village could adopt to mitigate potential deleterious consequences of that action.

Yard Signs - Some attendees of the July Council meeting raised concern about business signage on Village property, particularly related to participation in community solar power. The Village Manager was requested to notify relevant properties that commercial signage should be removed, per Village rules and regulations restricting commercial signs (Section 3-209).

REMINDERS

Bulk Trash Pickup: The next bulk trash pickup will be **Saturday, September 21**. Items must be at curbside by 7 AM. Our contractor uses different trucks to haul different items, so certain items may be removed before others. Included items: Washing machines, dryers, stoves, hot

water heaters, other major appliances, furniture/parts of furniture, large toys, bicycles, swing sets, bath tubs, sinks, toilets, do-it-yourself amounts of earth, sand, gravel, demolition debris and construction waste, parts of automobiles, but not fleet tires. Excluded: Large tree stumps, poisons, acids, caustics, explosives, oil or other flammable liquids, motor vehicles and parts such as batteries, tires, bricks, general construction material, iron pipe over 10 ft long, large rocks, wood piles, large tree limbs, dead animals, human or animal feces and ammunition.

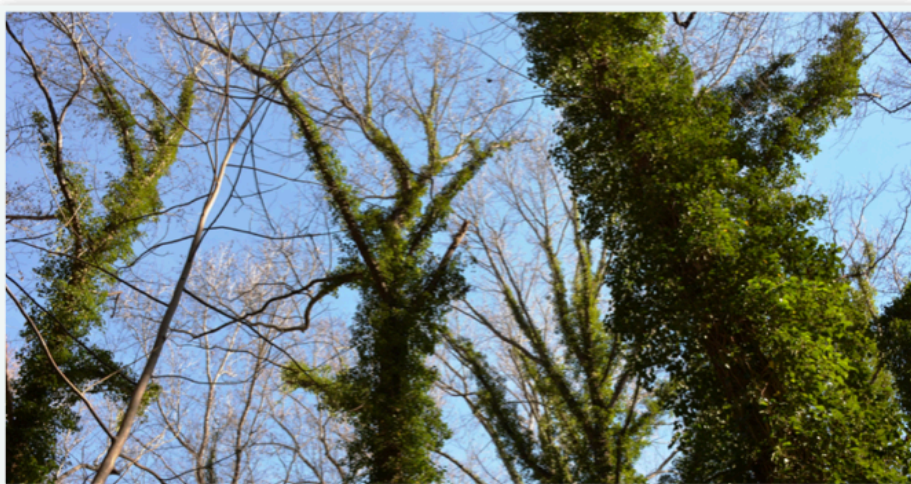
CALENDAR (2019)

- Sept 17: 8 PM – Village Council Meeting
NCC Christian Church
(8814 Kensington Pkwy)
- Sept 21: Bulk Trash Pick Up
- Oct 2: Village Conversion to Dual
Stream Recycling
- Oct 15: 8 PM – Village Council Meeting
- Nov 19: 8 PM – Village Council Meeting
- Dec 17: 8 PM – Village Council Meeting



Village of North Chevy Chase Notice: Ivy on Trees

Ivy is increasingly harming the trees in North Chevy Chase. It causes dieback, weighs down branches, attracts fungus and expands rot. It increases the risk for trees toppling in storms.



Village residents are encouraged to remove ivy from trees on their property:

Removing ivy is simple. Use garden clippers to cut all ivy vines around the base of the tree. (You may need a small hand saw for any larger vines.) Make another cut about two feet higher, cutting the vines all the way around the tree again. Remove the cut section so that you can see the bark. Do not pull the vines above; that damages the bark. The remaining vines will die and fall off over time.

Some trees have poison ivy vines. Wear protective gloves & clothing to remove the vine; wash all gear afterwards. More: www.northchevyCHASE.org/resources/poisonivy/.

The village can help you remove your vines. Contact the village manager at nccinfo@northchevyCHASE.org or (301) 654-7084.



RECYCLING BASICS

RECYCLE **MORE** NOW
FOR CLEANER LAND, AIR AND WATER!



GLASS BOTTLES & JARS

Glass jars and bottles only. No other kinds of glass. Lids can be recycled, but remove these from the bottle or jar first. Rinse and leave labels on.



PLASTICS BOTTLES & CONTAINERS

Plastic bottles, containers, jars, tubs, lids/caps, pails/buckets, flower pots, clamshell containers, bakery trays and cake domes, deli containers and trays, fruit and vegetable containers and baskets, cups, tubs and lids. Empty and rinse containers; labels are OK. Lids and caps can be recycled, but remove these from bottles or containers first. No plastic wrap/bags or Styrofoam®/polystyrene (labeled #6 PS).

NO PLASTIC BAGS!

Reduce waste – use reusable bags whenever possible.
Plastic bags can be recycled at most local grocery stores.



YARD TRIMMINGS

When you can't grasscycle, compost and/or mulch, bag or can yard trimmings. Brush can be bundled. Always label containers of yard trimmings. No plastic bags for yard trimmings!



Montgomery County has a dual-stream recycling program. If you receive county-provided recycling collection services, please do not mix paper with commingled materials in the blue bin or place commingled materials with mixed paper in the wheeled cart. If you don't have a wheeled cart, you may recycle mixed paper in a paper bag, in a cardboard box with a lid, or bundle with twine and place next to your blue bin.



CANS & FOIL PRODUCTS

Aluminum and bi-metal (steel/tin) food and beverage cans, aluminum foil products and empty non-hazardous aerosol cans. Rinse cans and wipe foil. Attached lids are okay. No aerosol cans that contained automotive or hazardous products.



MIXED PAPER AND CARDBOARD

Cardboard boxes, newspapers, magazines, cereal, snack food and pasta boxes, office paper, unwanted mail, shredded paper, milk/juice cartons, juice/drink boxes, frozen food boxes, fruit and produce boxes, and all other clean, dry paper, etc. Place paper in blue wheeled cart, in a small cardboard box, or in paper grocery bags or bundle with twine and place next to or on top of recycling bin. Please do not place paper in plastic bags. Keep mixed paper items separate from glass, plastic, metal and aluminum items when placing them out for recycling collection.



DEPARTMENT OF ENVIRONMENTAL PROTECTION
DIVISION OF SOLID WASTE SERVICES (2017)

Visit our website at www.montgomerycountymd.gov/recycling
Or call 3-1-1 or 240-777-0311 for more information about:

RECYCLING AT YOUR HOME, APARTMENT OR CONDO, AND FOR SPECIAL COLLECTION PICK-UPS

MONTGOMERY COUNTY'S RECYCLING GOAL: REDUCE WASTE AND RECYCLE 70% BY 2020!
This information is available in an alternate format by calling 240-777-6480.

Recycle The Following Items At The Montgomery County Transfer Station:

Recicle los siguientes artículos en la Estación de Transferencia del Condado de Montgomery:

在蒙哥馬利郡轉運站回收下列物品：

16101/16105 Frederick Road, Derwood

Bulky Rigid Plastics

Plastic toys, crates, pet carriers, garbage cans, lawn furniture, clothes hangers, automotive parts, etc.

Scrap Metal

Washers, dryers, refrigerators, air conditioners, dishwashers, sinks, stoves, freezers, furnaces, hot water heaters, trash compactors, iron furniture, doors, cabinets, humidifiers/dehumidifiers, bikes, swing sets, aluminum lawn chairs, shower stalls and disassembled metal sheds.

If you live in a single-family home, call 311 by 7 p.m. the business day before your normal recycling collection day to schedule a collection for large scrap metal items or complete on-line request at www.montgomerycountymd.gov/311 by 11:59 p.m. the day before your collection day.

Tires

Vehicle Tires (no more than four).

Textiles

Clothing, drapes, towels, shoes, sheets, handbags and cloth measuring at least 15" x 15".

Antifreeze

Antifreeze drained from your car, truck, RV or boat. (5 gallon limit).

Motor Oil

Used motor oil from cars, trucks, boats, lawn mowers, RVs or motorcycles. (5 gallon limit).

Batteries (Automotive/Lead Acid)

Lead acid from cars, trucks and RVs.

Construction Materials

Doors, fencing/lumber, sheds, drywall, flooring, carpeting, kitchen cabinets, hardware, toilets, bathtubs, cinder blocks and sinks.

Computers

Old or unwanted processing units, hard drives, monitors, keyboards, printers and copiers, wires and power cords, scanners, software, etc.

Televisions

All types of television sets (up to three).

Electronic Items

CD and DVD players, stereos and speakers, VCR players, camcorders, fax machines, cell phones, telephones, calculators, PDAs, projection equipment, copiers, scanners, digital cameras, electronic toys, and electronic typewriters.

Plásticos rígidos voluminosos

Los juguetes de plástico, cajas, jaulas, botes de basura, muebles de jardín, perchas, piezas de automóviles, etc.

Chatarra

Lavadoras, secadoras, refrigeradores, acondicionadores de aire, lavaplatos, fregaderos, estufas, congeladores, hornos, calentadores de agua, compactadores de desperdicios, muebles de hierro, puertas, gabinetes, humidificadores/deshumidificadores, bibibletas, juegos de columpios, sillas de aluminio para el jardín, compartimentos de duchas, y corbentizos de metal desmontados.

El Condado de Montgomery ofrece recolecciones de chatarra grande (metales y artículos grandes compuestos mayormente de metal) para residencias. Para programar una cita llame al 3-1-1 antes de las 7 p.m. el día antes de su día de recolección o puedes completar una solicitud en línea al visitar www.montgomerycountymd.gov/311 antes de las 11:59 p.m. de el día anterior de su colección.

Llantas

Llantas de vehículos (no más de cuatro).

Textiles

Ropa, cortinas, toallas, zapatos, sábanas, carteras y pedazos de tela con medidas de al menos 15" x 15".

Anticongelante

Anticongelante drenado de su auto, camión, vehículo de recreación o bote. (Límite de 5 galones).

Aceite de motor

Aceite de motor usado de autos, camiones, botes, cortadoras de césped, vehículos de recreación o motocicletas. (Límite de 5 galones).

Baterías (Autos/ácido de plomo)

Acido de plomo de automoviles, camiones o vehículo de recreación.

Materiales de construcción

Puertas, verjas/madera, cobertizos, planchas de madera o yeso, pisos, alfombras, gabinetes de cocina, material de ferretería, inodoros, bañeras, ladrillos de cienza y fregaderos.

Computadoras

Unidades de procesamiento antiguas o no deseadas, discos duros, pantallas, teclados, impresoras y copiadoras, alambres y cordones eléctricos, escáners, software, etc.

Televisores

Toda clase de televisores (hasta tres).

Artículos Electrónicos

Tocadoras de discos compactos y DVD, equipos de sonido y parlantes, videocámaras, fax, teléfonos celulares, teléfonos, calculadoras, agendas electrónicas, fotocopiadoras, proyectores, cámaras digitales, juguetes eléctricos, y maquinas de escribir eléctricas.

大件硬質塑膠

塑膠玩具、板條箱、寵物籠、戶外傢俱、衣架、汽車零件等。

廢舊金屬

洗衣機、烘乾機、電冰箱、空調機、洗碗機、洗滌槽、電爐、冷凍箱、火爐、熱水器、廢物壓縮機、鐵製傢俱、門、櫥櫃、加濕器/除濕、自行車、鞦韆、鋁質草地椅、淋浴設備和拆卸的金屬棚。

如果您住在單一家庭住宅，請於正常回收收集日前一個工作日的傍晚下午 7 點前致電 311，以便安排收集大件廢舊金屬物品，或在收集日前一天晚上 11:59 之前登錄 www.montgomerycountymd.gov/311 填寫線上申請。

輪胎

汽車輪胎（不超過四個）。

紡織品

衣物、窗簾、浴巾、鞋子、被單、手提包和至少 15 英寸 x 15 英寸大的布料。

防凍劑

從轎車、卡車、旅行車或船舶排出的防凍劑。（最多 5 加侖）。

機油

轎車、卡車、船舶、割草機、旅行車或電動腳踏車使用過的機油。（最多 5 加侖）。

電池（汽車/鉛酸電池）

轎車、卡車和旅行車使用過的鉛酸電池。

建築材料

門、籬笆/木料、棚子、石膏板、地板、地毯、廚櫃、五金製品、馬桶、浴缸、空心磚和洗滌槽。

電腦

舊的或不想要的處理器、硬碟、顯示器、鍵盤、印表機和影印機、電腦線和電源線、掃描器、軟體等。

電視機

所有類型的電視機（最多三台）。

電子產品

CD 和 DVD 播放機、音響和揚聲器、VCR 放影機、攝影機、傳真機、手機、電話、計算器、掌上型電腦、投影設備、影印機、掃描器、數碼相機、電子玩具和電動打字機。

Where: Cars—Use Route 355 entrance **Open:** Monday thru Friday 7:00 a.m.—8:00 p.m., Saturday 7:00 a.m.—5:00 p.m., Sunday 9:00 a.m.—5:00 p.m.

Dónde: Autos—Use la entrada de la Ruta 355 **Abierto:** De Lunes a Viernes: 7:00 a.m.—8:00 p.m., Sábados: 7:00 a.m.—5:00 p.m., Domingos 9:00 a.m.—5:00 p.m.

地點：轎車—使用 355 號公路入口 時間：星期一至星期五早上七點至晚上八點，星期六早上七點至晚上五點，星期日早上九點至晚上五點。



Mixed Paper

What types of paper can be recycled?

All clean and dry paper can be recycled including corrugated cardboard boxes, newspapers and inserts, magazines, cereal and other boxes (boxboard), telephone books, white and colored computer and office paper, paperback and hardcover books, greeting cards, wrapping paper and gift bags, envelopes and unwanted mail, catalogs, shredded paper, and coated paper items such as milk and juice cartons, juice/drink boxes, fruit and produce boxes and frozen food boxes. Please keep all paper items separate from glass, plastic, metal and aluminum cans, bottles, jars, containers, etc. when recycling.

How do you recycle this material?

Residents of Single-Family Homes:

The County has provided a 64-gallon wheeled cart for your convenience. This cart eliminates the need to bag, tie, flatten, or cut boxes. Place all mixed paper and cardboard into this cart, or if a box is too large to fit in the cart simply place it on the ground next to the cart. If you don't have a wheeled cart, put all mixed paper in a paper bag or bundle it with twine and place next to your blue bin at curbside for pick-up.

Multi-Family Properties:

Place mixed paper in recycling containers labeled **mixed paper**. Recycling containers are often located near outdoor trash containers on your property, in a common area in your building, or in your trash room. Check with your property manager if you have any questions.

Businesses:

All mixed paper can be placed in appropriate recycling containers labeled **mixed paper** that are provided by your business or property manager. Some businesses may separate paper by type, so be sure to follow the instructions provided by your business.



Follow these rules when recycling this material:



Shred and Recycle Confidential Papers



All Clean and Dry Paper is Recyclable



No Napkins, Paper Towels, or Tissues



No Plastic Packaging, Plastic Wrap or Styrofoam™



No Plastic Bags



No Contaminated Paper or Cardboard*

* Contaminants include food, paint, chemicals, kitty litter, etc.

Mixed Paper. Recycle More Now.

Recycling is the Law.

**Executive Regulation 15-04AM
requires recycling of
Mixed Paper.**

How can I safely recycle my confidential business documents and personal mail especially bank or credit card statements?

Shredding these documents before recycling them is an easy way to prevent identity theft and make sure confidential business or personal information is not disclosed. Shredded paper may be placed directly in recycling bins labeled for mixed paper in your office, or at your apartment or condominium, and in your blue wheeled cart at home. Please place shredded paper in paper bags instead of plastic bags to prevent shredded paper from blowing around causing litter and to ensure no contamination of paper for recycling.

What types of paper cannot be recycled?

Any item(s) including carbon paper, paper or cardboard contaminated by paint, food, chemicals, kitty litter, etc., and paper towels, napkins, and/or tissues cannot be recycled. Plastic bags and packing material such as Styrofoam™/polystyrene should not be placed in your mixed paper recycling bin.

What should I do if I don't have a mixed paper recycling container?

If you live in a single-family home, please visit montgomerycountymd.gov/recycling or call (240) 777-6410 and order a wheeled cart, which will be delivered to your home. Residents of apartments and condominiums should check with their property manager. For your workplace, check with your supervisor or your property manager. Businesses can order desk-side recycling bins by calling the Division of Solid Waste Services (DSWS) at (240) 777-6437.

Did you know?

Recycling one ton of paper saves 17 trees. Recycle more now.



Help Reduce Waste

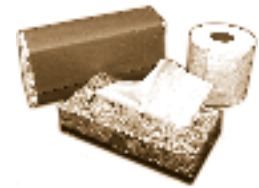
Reducing the amount of paper generated by residents and businesses is easy. Check if the product can be used again before discarding it. For example; instead of throwing away office paper that is only used on one side, flip it over and use the other side to print on. Use interoffice envelopes or reuse padded ones as appropriate. You can even reuse wrapping paper or use newspapers to wrap gifts. Reusing cardboard boxes for storage or mailing is another quick way to reduce waste and preserve resources. Doing these simple things will help reduce the amount of paper generated and also save you money. Another option is to buy products that do not have excess packaging. Also, buy items in bulk to reduce the amount of materials that must be disposed.

Close the Loop—Buy Recycled

There are plenty of recycled paper products you can purchase to help close the recycling loop. Many local grocery, office supply and hardware stores sell recycled paper products such as envelopes, computer paper, tablets, etc. Also, building materials such as counter tops can be made with recycled paper as well.




Office Paper
and Supplies



Paper Towels, Tissues
and Toilet Paper

How do I know if I am buying products made from recycled materials and where do I find them?

Look for the “made with recycled-content” symbol . When it is on a package, you can be sure that the product is made with recycled materials. Recycled products are available from many sources including grocery, department, and hardware stores, so it is not necessary to shop at a specialty store to find them.



For more information, contact:

Montgomery County, Maryland • Division of Solid Waste Services

101 Monroe Street, Sixth Floor • Rockville, Maryland 20850

Web Site: www.montgomerycountymd.gov/recycling

Phone: 240-777-6480 • Fax: 240-777-6465



This information is available in an alternate format by calling Alan Pultyniewicz at 240-777-6480.

Yard Trim



What is yard trim?

Primarily found outside on your property, yard trim consists of leaves, grass, brush, and other garden trimmings. Other items found within residences and businesses that can also be considered yard trim are flowers, greenery, and Christmas trees.

How do you recycle this product?

To be accepted in our curbside recycling program, each branch or tree limb may be up to

- ❖ 4 feet in length
- ❖ 4 inches in diameter

Yard trim in plastic bags will not be collected.

Prepare your yard trim this way following these instructions

paper yard trim bags Place material into large paper yard trim bags, available at most grocery stores, home improvement stores, and garden centers.

Each paper bag must not exceed **45 pounds**. Set paper bags at the curb by 7 a.m. on your collection day.

Do not use paper grocery bags or plastic shopping bags for yard trim collection.

reusable container Place material into reusable containers, like trash cans.

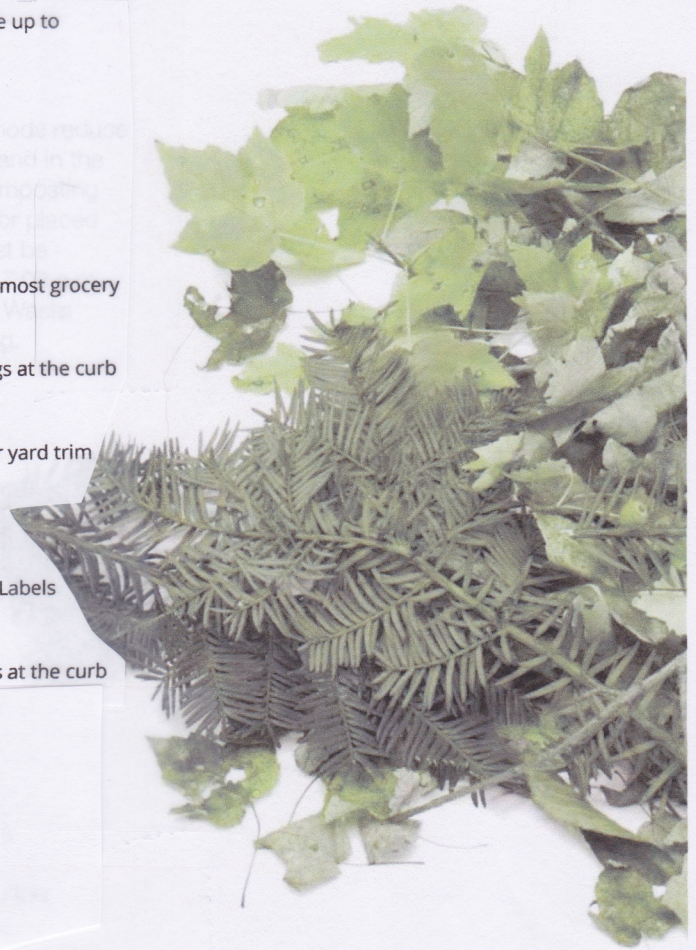
Containers must have a County "yard trim" label on them. Labels should be facing the street. Order yard trim decals.

Each container must not exceed **45 pounds**. Set containers at the curb by 7 a.m. on your collection day.

bundled with twine Bundle your brush with twine.

- Each bundle must be
- 30 inches or less in diameter
 - 45 pounds or less

Set bundles at the curb by 7 a.m. on your collection day.



Follow these rules when recycling this material:



Try Grasscycling or Composting Instead



Use Reusable Containers Clearly Labeled for Yard Trim



Each Container, Bundle, or Bag CANNOT exceed 45 lbs.



Use Paper Bags or Bundle & Tie with Twine



No Plastic Bags



Remove All Decorations, Garland, and Lights from Christmas Trees

Yard trim collections do not accept: Dirt/soil, rocks or sod; root balls or tree stumps; lumber; oversized yard trim and storm debris; rubber mulch.