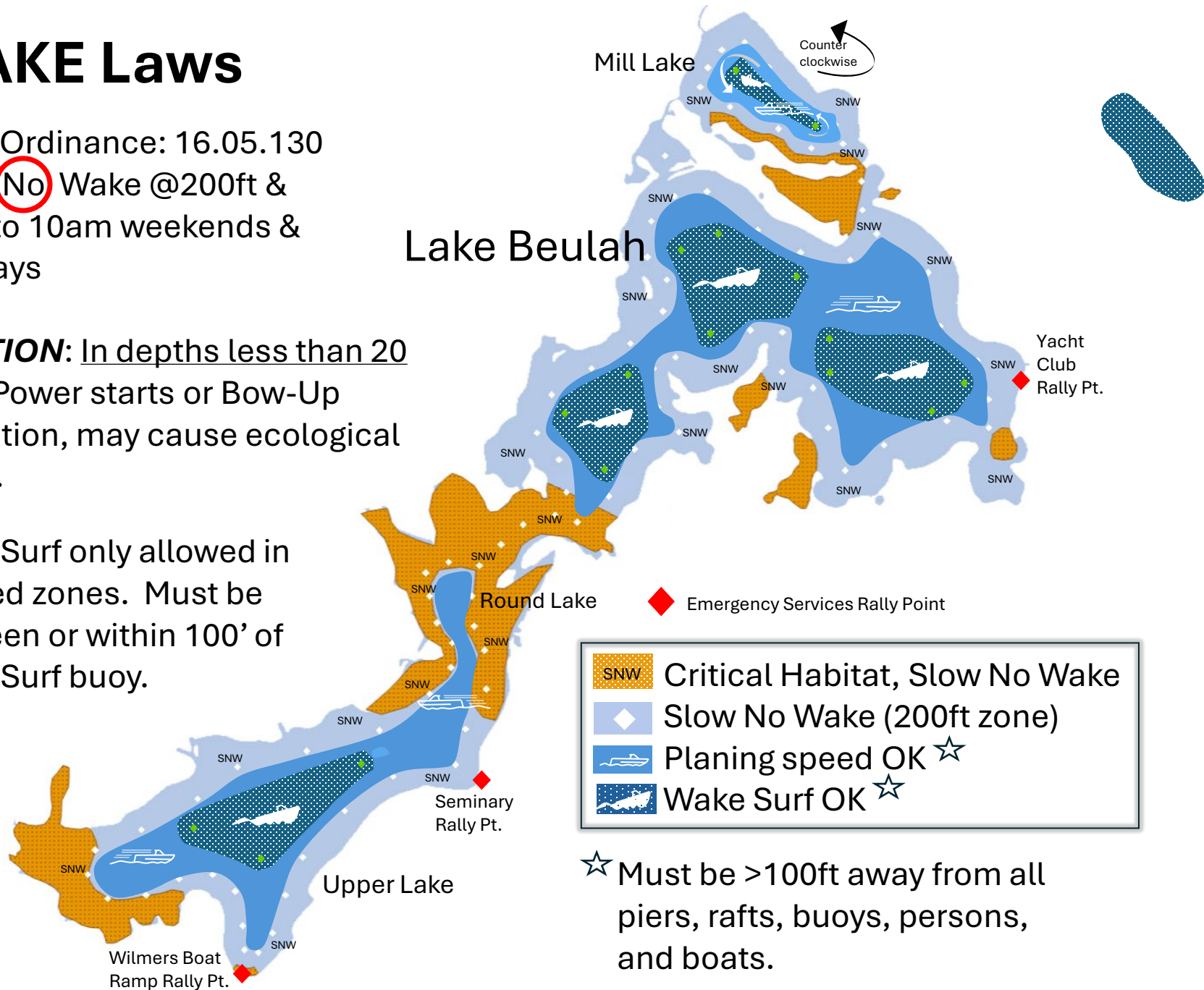


WAKE Laws

Town Ordinance: 16.05.130
Slow **No** Wake @200ft &
6pm to 10am weekends &
holidays

CAUTION: In depths less than 20 feet: Power starts or Bow-Up operation, may cause ecological harm.

Wake Surf only allowed in marked zones. Must be between or within 100' of Wake Surf buoy.

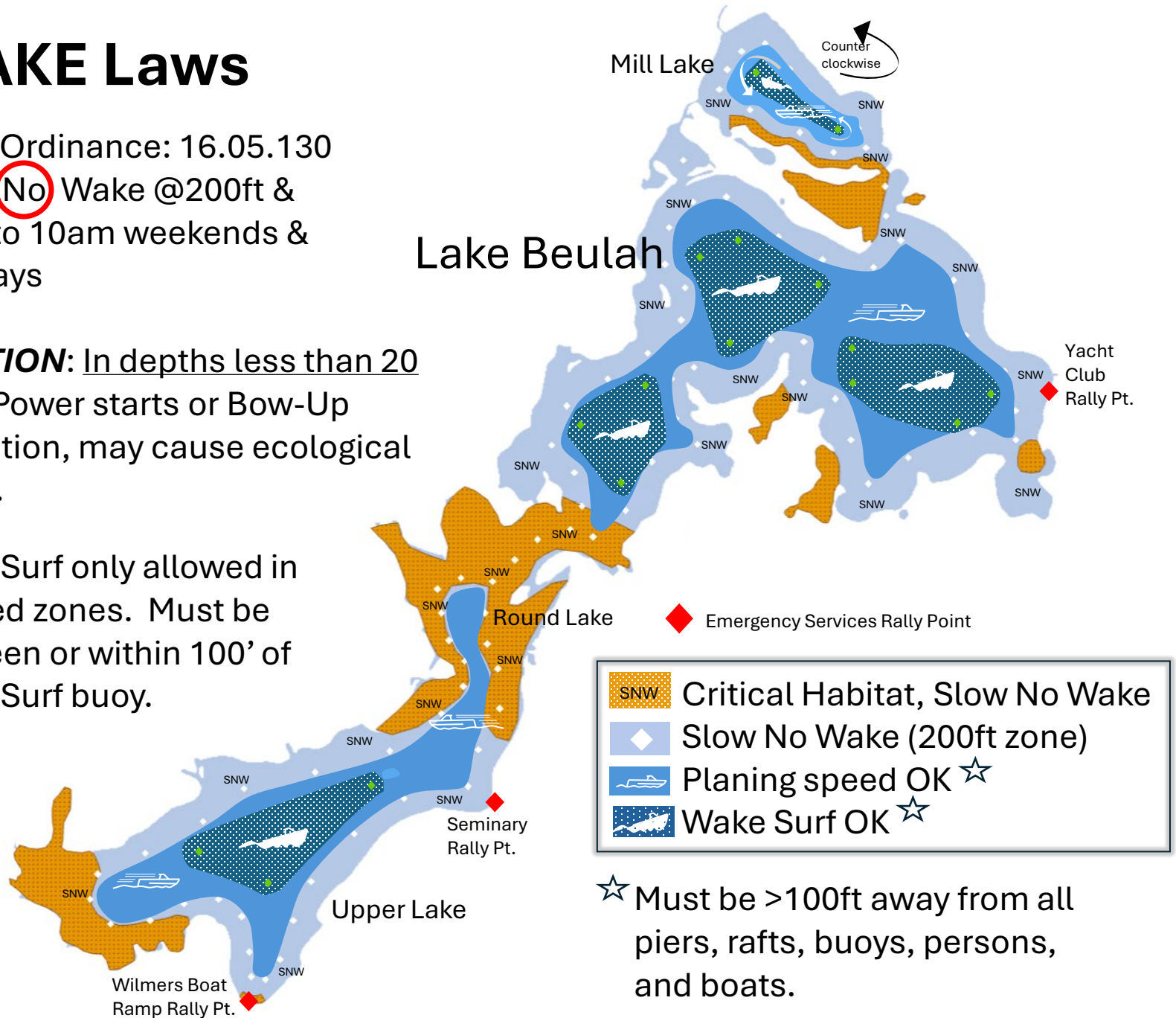


WAKE Laws

Town Ordinance: 16.05.130
Slow **No** Wake @200ft &
6pm to 10am weekends &
holidays

CAUTION: In depths less than 20 feet: Power starts or Bow-Up operation, may cause ecological harm.

Wake Surf only allowed in marked zones. Must be between or within 100' of Wake Surf buoy.

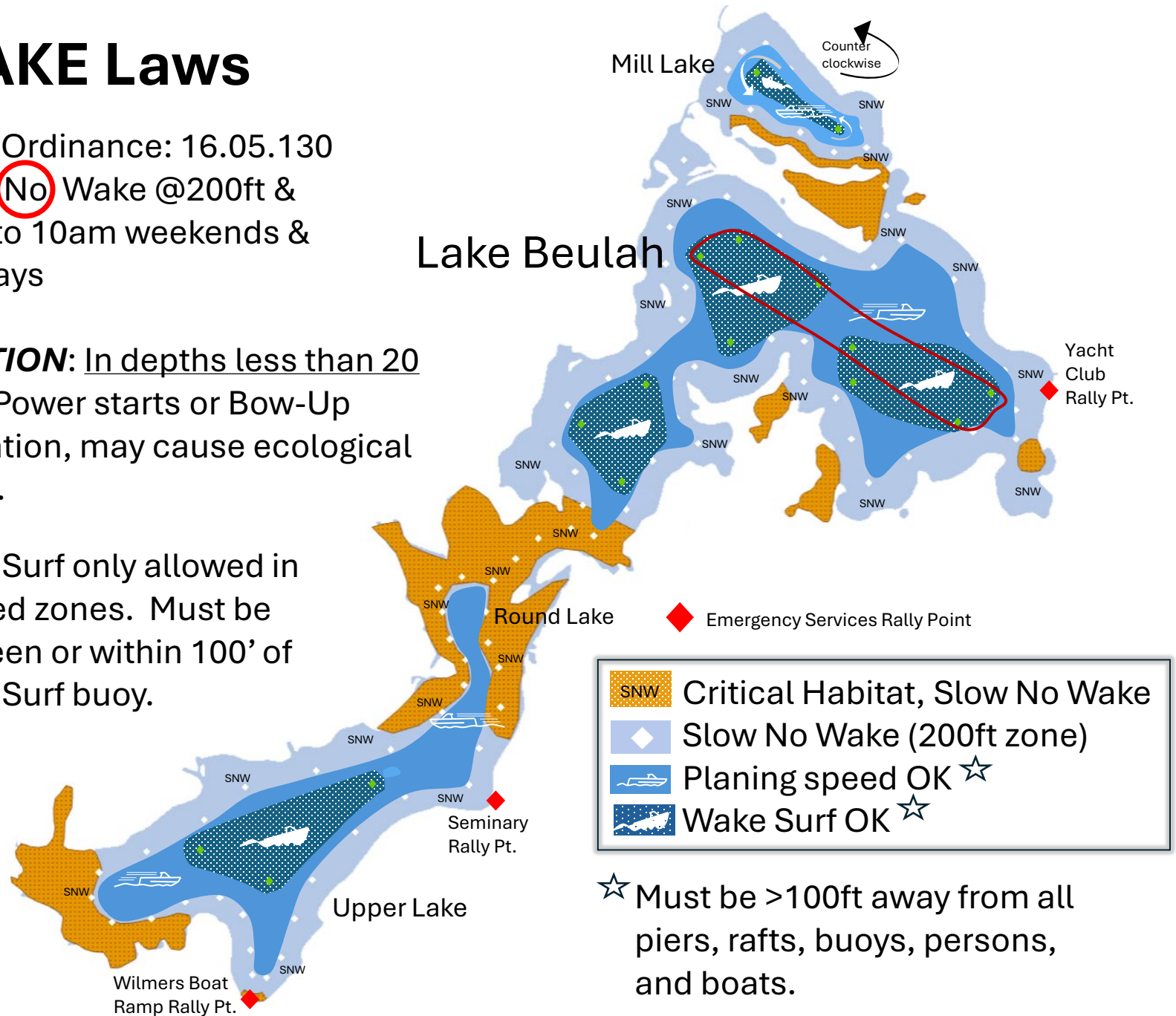


WAKE Laws

Town Ordinance: 16.05.130
Slow **No** Wake @200ft &
6pm to 10am weekends &
holidays

CAUTION: In depths less than 20 feet: Power starts or Bow-Up operation, may cause ecological harm.

Wake Surf only allowed in marked zones. Must be between or within 100' of Wake Surf buoy.



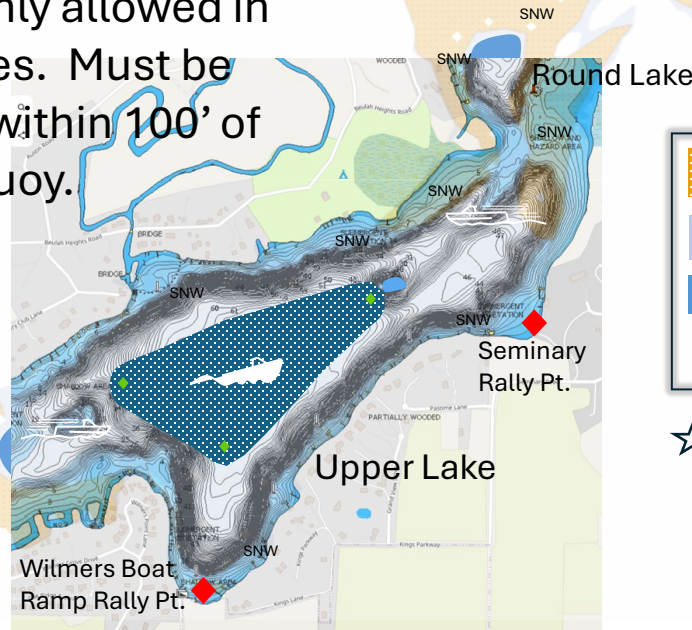
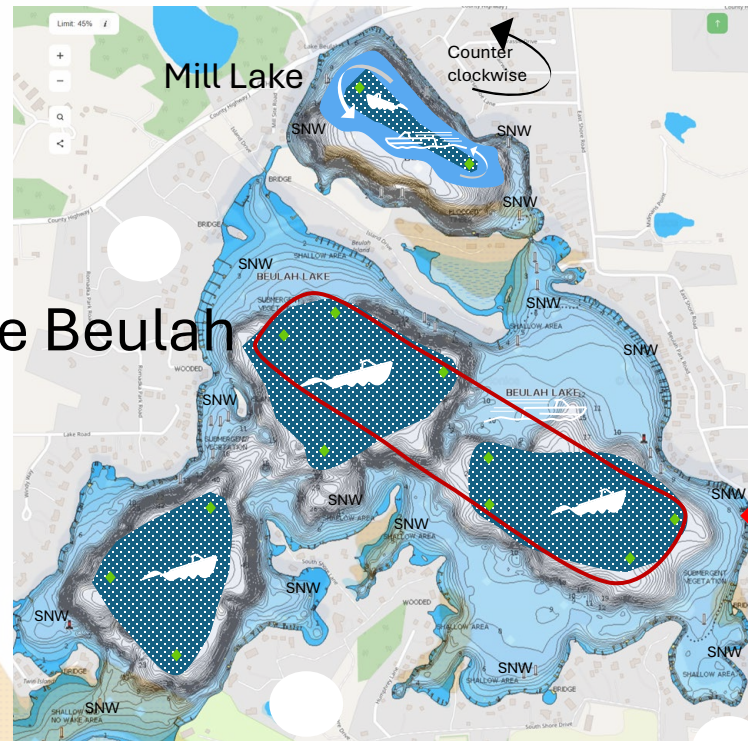
WAKE Laws

Town Ordinance: 16.05.130
Slow **No** Wake @200ft &
6pm to 10am weekends &
holidays

CAUTION: In depths less than 20 feet: Power starts or Bow-Up operation, may cause ecological harm.

Wake Surf only allowed in marked zones. Must be between or within 100' of Wake Surf buoy.

Lake Beulah



◆ Emergency Services Rally Point

SNW	Critical Habitat, Slow No Wake
◆	Slow No Wake (200ft zone)
🚤	Planing speed OK ☆
🌊	Wake Surf OK ☆

☆ Must be >100ft away from all piers, rafts, buoys, persons, and boats.

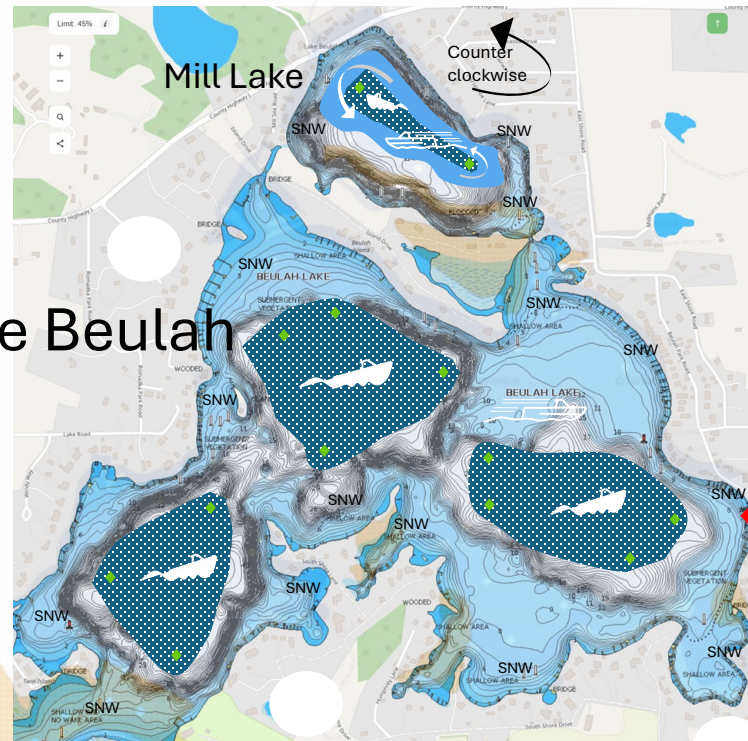
WAKE Laws

Town Ordinance: 16.05.130
Slow **No** Wake @200ft &
6pm to 10am weekends &
holidays

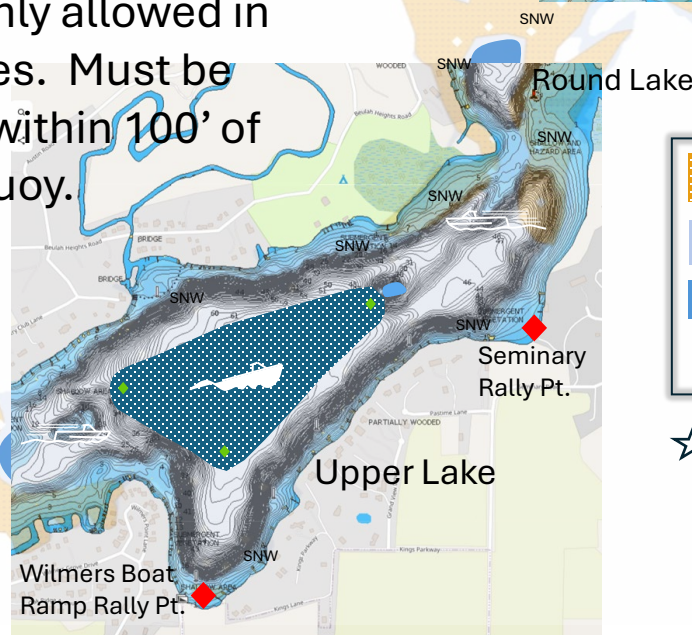
CAUTION: In depths less than 20 feet: Power starts or Bow-Up operation, may cause ecological harm.

Wake Surf only allowed in marked zones. Must be between or within 100' of Wake Surf buoy.

Lake Beulah



Yacht Club Rally Pt.



Emergency Services Rally Point

SNW	Critical Habitat, Slow No Wake
◆	Slow No Wake (200ft zone)
☞	Planing speed OK ☆
★	Wake Surf OK ☆

☆ Must be >100ft away from all piers, rafts, buoys, persons, and boats.

