

Chippewa County

2023 Household Hazardous Waste Clean Sweep Schedule



Take a look in your garage, kitchen, basement, or workshop. Some of the household products you find here may require special consideration in their use, storage, and disposal. Improper disposal of these products can cause fires, injuries to people and animals, and groundwater contamination. Chippewa County is making it easy for residents to get rid of household hazardous waste. Please consult the table below for a convenient time and location. Please call the Chippewa County Recycling Program at **715-726-7999** if you have any questions.

<u>Date</u>	<u>Location</u>	<u>Time</u>
Saturday Apr. 15	Northern Wisconsin State Fairgrounds 225 Edward St, Chippewa Falls Appliances, electronics, and scrap metal will also be accepted (fees may apply).	8 am - Noon
Saturday Sept. 23	Northern Wisconsin State Fairgrounds 225 Edward St, Chippewa Falls	8 am - Noon

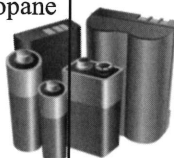


DO BRING:

Oil/solvent-based paints	Heavy metal paints
Antifreeze	Corrosives
Solvents	Poisons
Wood preservatives	Oil Filters
Waste motor oil	Fluorescent bulbs
Fuel mixtures, kerosene, fuel oil	Aerosol cans
Thinners, strippers, stains, varnish	1 and 20 lb. propane cylinders
Mercury and other heavy metals	
Lead acid batteries	

Batteries:

(All batteries must have both terminals taped with clear packaging tape and sorted in order to be accepted.)



DO NOT BRING:

Mattresses
Tires
Furniture
Latex paint
Radioactives
Business waste
Empty and dry containers
Explosives or ammunition
Biological and infectious wastes
Pressurized cylinders
Picric Acid
Pesticides
Fertilizers

HAZARDOUS WASTE WILL BE ACCEPTED FOR FREE FROM ALL CHIPPEWA COUNTY RESIDENTS!!

Clean Sweep Collection and Disposal Guidelines

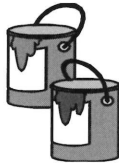
1. *No commercial or industrial wastes will be accepted.*
2. *All products must be in original containers or positively identified for liability and safety reasons.*
3. *DO NOT MIX substances together – lethal products can result.*
4. *Package carefully – line a cardboard box with a plastic bag or separate each product with folded newspaper.*
5. *Before deciding to bring a product to the Clean Sweep consider using it up according to label directions or give it to a friend or neighbor who will use it as intended.*

An Ounce of Prevention

Your participation in Clean Sweep will prevent serious accidents in your home and the environment. You can clean hazardous materials out of your home and be rest assured they will receive proper disposal through Clean Sweep.

Lending a Helping Hand

Do you have elderly or disabled neighbors or family members who can't make it to a Clean Sweep? Lend a helping hand and help the environment. Volunteer to take their household hazardous wastes to a Clean Sweep collection site for them.



Latex Paint, What to do!?!

Many Chippewa County residents wonder why Chippewa County Clean Sweep events have never accepted latex paint. Latex paint is composed of primarily water and small amounts of other materials which are essentially non-toxic. Because latex paint is made up of primarily water it can be evaporated and dried out by the homeowner and does not need to be handled through an expensive Household Hazardous Waste Clean Sweep Program. Here are some tips on how to dispose of latex paint at home.

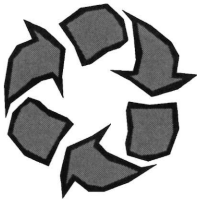
For small amounts of paint:

- # Remove the lid and let the paint dry in the can. Stir the paint occasionally to speed drying.
- # Or, brush paint in layers on newspaper or cardboard.

For larger amounts of latex:

- # Pour one-inch layers of paint into a cardboard box lined with plastic. Allow the paint to dry one layer at a time - thin layers will speed up the drying process.
- # Or, mix paint with cat litter, sawdust or redi-mix concrete (1:1 ratio) in cardboard boxed lined with plastic and let dry.

Throw the completely dried paint, cans and other materials in the trash. Leave the lids off paint cans so garbage haulers will see that the paint is dry and accept them.



CHIPPEWA COUNTY 2023 Waste Tire Program

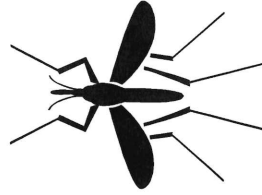


A COUNTY PROGRAM

The Waste Tire program provides an opportunity for Chippewa County residents to dispose of their discarded tires for a low fee at convenient collection sites. This program provides an outlet for waste tires and assembles large amounts of waste tires sufficient to be loaded on semi-trailers and transported to facilities where the tires are converted to tire derived fuel (TDF).

ELIMINATE HAZARDS

It is estimated that in Wisconsin five million used tires are discarded each year. Waste tires present a health hazard and are fertile breeding grounds for mosquitoes and other insects. Large stockpiles of waste tires pose a fire hazard.



CORNELL COLLECTION DATES

Located at the Chippewa County Highway Shop at 20250 Cty Hwy K, just south of Cornell.

Wed., May 17 *1 pm - 5 pm*
Sat., May 20 *8 am - Noon*
Sat., September 9 *8 am - Noon*
Thurs., September 28 *1 pm - 5 pm*

LAFAYETTE COLLECTION DATES

Located behind the Lafayette Town Hall, just south of County Hwy X, at 5765 197th Street.

Sat., April 15 *8 am - Noon*
Thurs., April 20 *1 pm - 5 pm*
Thurs., May 18 *1 pm - 5 pm*
Thurs., June 15 *1 pm - 5 pm*
Thurs., July 20 *1 pm - 5 pm*
Thurs., August 17 *1 pm - 5 pm*
Sat., September 9 *8 am - Noon*
Thurs., September 14 *1 pm - 5 pm*
Thurs., September 28 *1 pm - 5 pm*

FEE SCHEDULE

	Res/Gov	Business
Passenger (through 15") with rim	\$ 4	\$ 6
Passenger (16-17") with rim	\$ 7	\$ 10
Passenger (16-17") with rim	\$ 7	\$ 10
Truck (18-19") with rim	\$ 10	\$ 15
Truck (18-19") with rim	\$ 13	\$ 16
Truck (20-22.5") with rim	\$ 17	\$ 21
Truck (20-22.5") with rim	\$ 17	\$ 21
Truck (20-22.5") with rim	\$ 20	\$ 25
Truck (over 22.5") with rim	\$ 22	\$ 27
Truck (over 22.5") with rim	\$ 30	\$ 38
Skidster	\$ 15	\$ 20
Tractor (to 28) with rim	\$ 30	\$ 40
Tractor (to 28) with rim	\$ 40	\$ 50
Tractor (over 28) with rim	\$ 45	\$ 55
Tractor (over 28) with rim	\$ 60	\$ 70
Heavy Equipment (under 500 lbs.)	\$ 65	\$ 75
Heavy Equipment (500-700 lbs.)	\$ 95	\$ 110
Bulk Loads	\$ 330/ton	\$ 340/ton

FURTHER INFORMATION

Tire rims can be taken to a local scrap metal dealer for disposal. Where deemed necessary the County may require weight receipts (gross and tare) to determine the tonnage of waste tires brought for disposal. The County reserves the right to refuse acceptance of any waste tire for specific reasons. For more information regarding the tire collections call 726-7999.

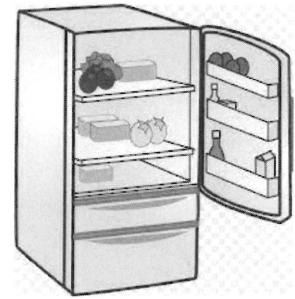


CHIPPEWA COUNTY

2023 Appliance Collection

Saturday, April 15, 2023
8 am - Noon

Chippewa Falls
Northern Wisconsin State Fairgrounds
225 Edward Street, Chippewa Falls



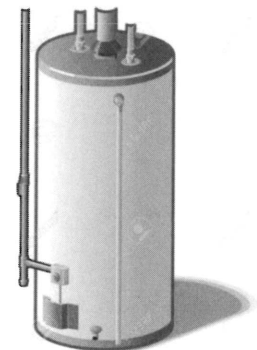
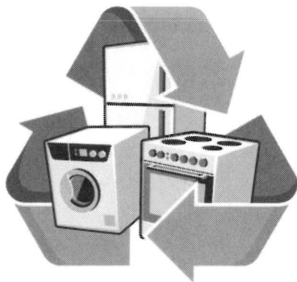
Freon Appliances..... \$15
Non-Freon Appliances..... **FREE**
Scrap Metal**FREE**

NEW PROGRAM!

April 16, 2023 and beyond

Monday – Thursday 8 am – 5 pm
Friday & Saturday 9 am – 1 pm

First Choice Recycling
525 Park Ridge Court (See Attached Maps)
Eau Claire



Freon Appliances..... \$20
Non-Freon Appliances..... **FREE**
Scrap Metal**FREE**

If you have any questions, please call the Chippewa County Recycling Program at 715-726-7999.



Electronics Recycling



Electronics contain valuable, reusable materials like gold, steel, silver, copper and glass. They also contain harmful materials like lead mercury, cadmium and chemical flame retardants. Recycling and reusing electronics protects the environment, conserves valuable raw materials and preserves landfill space.

CHIPPEWA COUNTY **FINAL ONE-DAY EVENT**

Saturday, April 15, 2023

- **Northern WI State Fairgrounds**
8 am - Noon
225 Edward St., Chippewa Falls



Electronics - FREE

CPU	Fax Machine
DVD/VCR	Printer
Cellphone	Camcorder
Fan	Keyboard
Camera	Vacuum Cleaner

Electronics – Fee Schedule

Monitor	\$1 – 3
---------	---------

LCD TV	\$5 - 10
--------	----------

Plastic TV

Wood TV

Projection TV

Big Screen TV

FIRST CHOICE **OPEN 6 DAYS PER WEEK**

- **525 Park Ridge Court**
Eau Claire 715-833-2005

Fees apply, please see First Choice
website: www.firstchoicerecycling.com

Monday - Thursday 8 am – 5 pm
Friday and Saturday 9 am – 1 pm



Sponsored by the Chippewa County Recycling Program
715-726-7999

"NEW" CHIPPEWA COUNTY APPLIANCE & ELECTRONICS RECYCLING PROGRAM AT

FIRST CHOICE®



RESIDENTIAL DROP OFF ONLY • OPEN 6 DAYS A WEEK!

ITEMS

FREE AND REDUCED RECYCLING RATES • WE ACCEPT COMPUTERS, ELECTRONICS, T.V.'S, SMALL & MAJOR APPLIANCES!

SMALL APPLIANCES & FANS	FREE
WASHERS, DRYERS, FURNACES, STOVES, WATER HEATERS	FREE
ALL BATTERY CHEMISTRIES TERMINALS MUST BE TAPED WITH CLEAR TAPE AND SORTED	FEES APPLY
MICROWAVES	FREE
ALL WIRE & METALS	FREE
COMPUTERS, LAPTOPS, TABLETS, CELL PHONES, KEYBOARDS	FREE
HARD DRIVE SHREDDED	\$2.00
FLUORESCENT LAMPS	\$0.50 - \$2.50
LCD MONITORS	\$1.00
PRINTERS, SCANNERS, FAX MACHINES	\$1.00
VCR, DVD, TYPEWRITERS, RADIOS, STEREOS OR SATELLITE RECEIVERS	\$1.00
CRT MONITOR	\$3.00
LCD T.V.'S: UP TO 42"	\$5.00
LCD T.V.'S: 43" & UP	\$10.00
TREADMILLS & EXERCISE EQUIPMENT	\$15.00
T.V.'S: PLASTIC UP TO 27"	\$5.00
T.V.'S: PLASTIC 28" & UP	\$10.00
T.V.'S: WOOD CONSOLE OR PROJ.	\$10.00
FREON APPLIANCES DEHUMIDIFIER, AIR CONDITIONER, FREEZERS, REFRIGERATORS	\$20.00

525 Park Ridge Ct. Eau Claire, WI 54703

715.833.2005

www.firstchoicerecycling.com

RECYCLING HOURS: MONDAY-THURSDAY 8:00AM-5:00PM • FRIDAY & SATURDAY 9:00AM-1:00PM

ATTENTION BUSINESSES WITH HAZARDOUS WASTE!

ANNOUNCING A CLEAN SWEEP PROGRAM FOR VERY SMALL QUANTITY GENERATORS (VSQG'S)



VSQG IS A BUSINESS THAT GENERATES <220 POUNDS OF HAZARDOUS WASTE IN ANY GIVEN MONTH, AND ACCUMULATES <2,205 POUNDS OF HAZARDOUS WASTE IN STORAGE.

Chippewa County, in cooperation, with WRR Environmental Services are pleased to announce two Clean Sweep collections for Very Small Quantity Generators (VSQG's) of hazardous wastes in 2023.

Where and when will this program be held?

All wastes must be transported by the generator.

Northern WI State Fairgrounds, Chippewa Falls

April 13, 2023 from 10:30 am – 1 pm

September 21, 2023 from 10:30 am – 1 pm

Pre-registration is required.

How can my business participate?

This program operates on a *fee-for-service* basis. Participating companies must pre-register following the procedures listed below.

1. You must provide an inventory to WRR of what you will be bringing to the event. (Use the form provided by WRR.) You may email or fax the inventory/receipt form to WRR.
2. WRR will provide you with a cost estimate for the inventory you submit.
3. If you decide to participate, contact WRR and they will schedule a time for you to deliver your hazardous wastes. They will also send you a VSQG HW Drop-off receipt.
4. You must bring your pre-approved wastes, the receipt, and a business check (or cash) to the collection site at the scheduled time. If you pay by check, leave the amount blank.
5. You must follow applicable shipping regulations when transporting materials to the collection site.

Forms of payment accepted: cash, check, or credit card.

The following materials **cannot** be accepted: Explosives, medical/infectious waste, radioactive materials, asbestos, unknown/unmarked items.

For further information about this program or to obtain pre-registration/inventory forms, please contact Duane McElwaine, WRR, at (715) 834-9624 or by email dmcelwaine@wrres.com.

