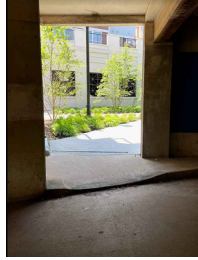
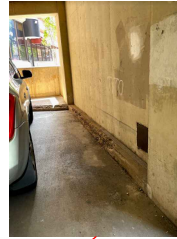


- PROPOSED WORK
1. IMPROVE ADA ACCESSIBLE RAMPS.



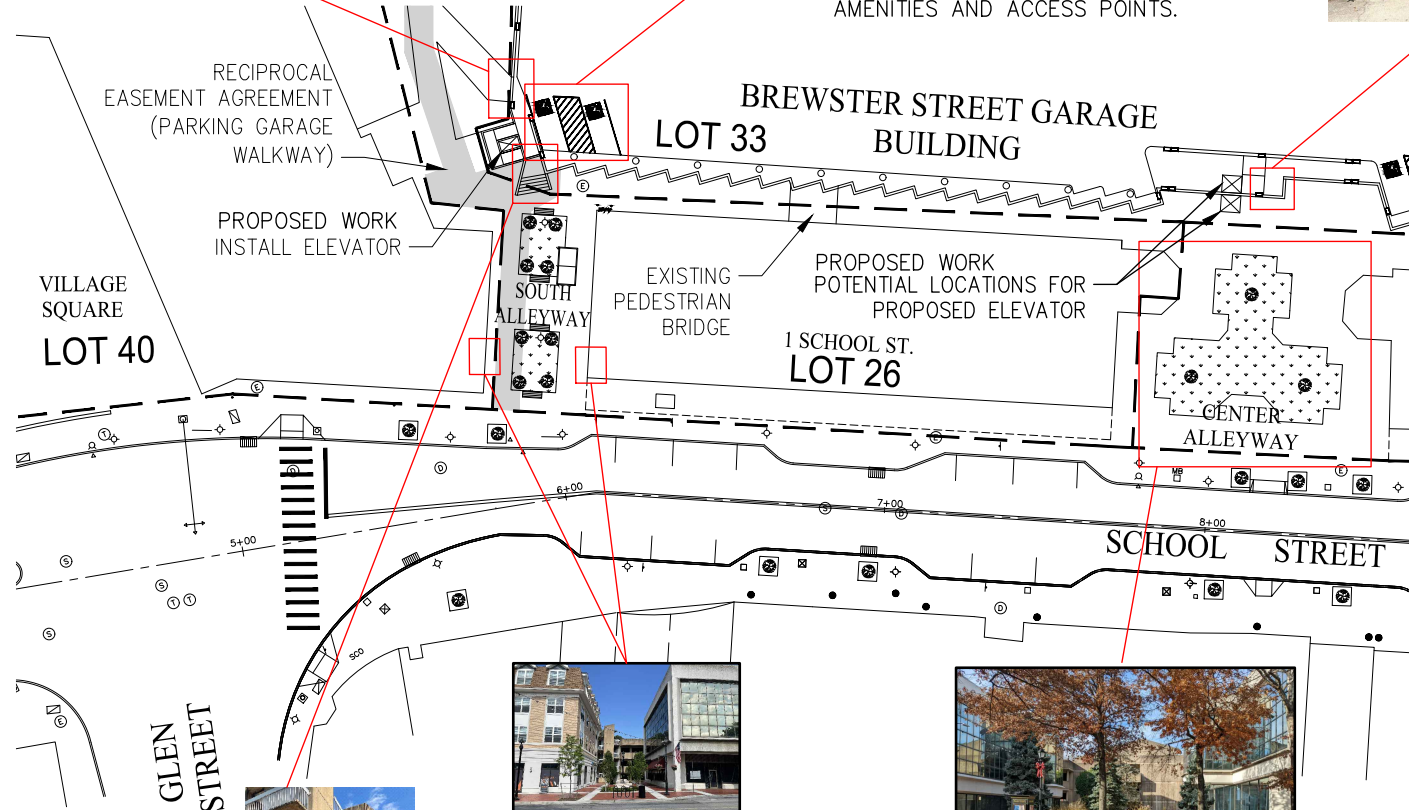
- PROPOSED WORK
1. CONVERT NON-ADA PARKING SPOTS TO ADA ACCESSIBLE SPOTS.



WORK WITHIN GARAGE BUILDING:

1. REPLACE/ENHANCE LIGHTING TO INCREASE VIABILITY.
2. REPAIR CURBS THROUGHOUT.
3. PRIORITIZE STRUCTURAL REPAIRS FROM 2015 INSPECTION REPORT.
4. INCLUDE ADDITIONAL SIGNAGE TO CLARIFY DIRECTIONS AND INDICATE LOCATIONS OF AMENITIES AND ACCESS POINTS.

- PROPOSED WORK
1. CLEAR VEGETATION.
  2. SMOOTH OUT CONCRETE LIP AND FURNISH ADA RAMP.
  3. ADD A SIGN INDICATING DIRECTION OF ADA RAMP TO THE RIGHT.



LEGEND

- 600 SANITARY SEWER CLEAN OUT
- ⊠ TREE PLANTING
- ⊞ TRASH RECEPTACLE
- ⬢ STREET LIGHT
- ⊕ ELECTRIC MANHOLE
- ⊙ SANITARY MANHOLE
- ⊙ DRAINAGE MANHOLE
- ⊞ CATCH BASIN
- ⊙ WATER VALVE
- ⊙ FIRE HYDRANT
- DRAINAGE PIPE
- ⊞ LANDSCAPING ISLAND
- ⊙ GAS METER
- R.O.W LINE



- PROPOSED WORK
1. ADD SIGNS INDICATING DIRECTION OF ADA ACCESSIBLE RAMP TO THE LEFT



- PROPOSED WORK
1. ADD SIGNS FOR PEDESTRIAN CONNECTION AND ADA ACCESS.



- PROPOSED WORK
1. REPLACE TALL & DENSE VEGETATION WITH SMALLER VEGETATION.
  2. ADD LIGHTING TO INCREASE VISIBILITY AND ENCOURAGE USE.
  3. ADD SIGNS FOR PEDESTRIAN CONNECTION AND ADA ACCESS.

ENHANCED PEDESTRIAN CONNECTIONS PLAN  
1 SCHOOL STREET AREA

CITY OF GLEN COVE  
DOWNTOWN PARKING CONNECTIONS

**DRAFT - NOT FOR DISTRIBUTION**

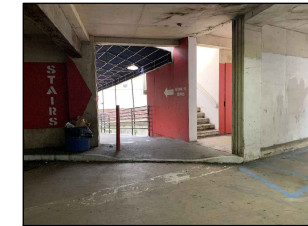
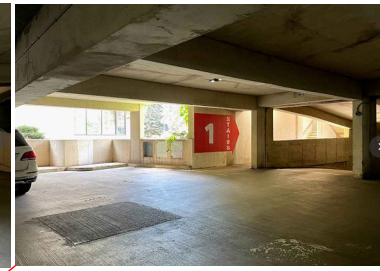
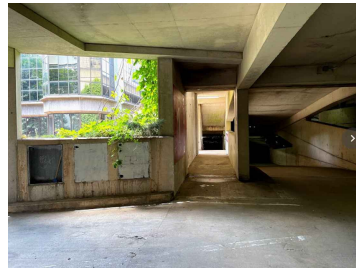
**PROPOSED WORK**

1. CLEAR VEGETATION.
2. SMOOTH OUT CONCRETE LIP AND FURNISH ADA RAMP.
3. ADD A SIGN INDICATING DIRECTION OF ADA RAMP TO THE RIGHT.



**PROPOSED WORK**

1. CONVERT NON-ADA PARKING SPOTS TO ADA ACCESSIBLE SPOTS.



PROPOSED WORK  
IMPROVE ADA ACCESSIBLE RAMP AT LEVEL 2

PROPOSED WORK  
INSTALL ELEVATOR

**BREWSTER STREET GARAGE  
BUILDING  
LOT 33**

EXISTING  
PEDESTRIAN BRIDGE

**AMC THEATRE  
LOT 30**

PROPOSED WORK  
POTENTIAL LOCATIONS FOR  
PROPOSED ELEVATOR

**LOT 26**

**3 SCHOOL ST.  
LOT 28**

**NORTH  
ALLEYWAY**

**CENTER  
ALLEYWAY**

**SCHOOL STREET**

**LEGEND**

- SCD SANITARY SEWER CLEAN OUT
- ⊠ TREE PLANTING
- ⊞ TRASH RECEPTACLE
- ◇ STREET LIGHT
- ⊕ ELECTRIC MANHOLE
- ⊙ SANITARY MANHOLE
- ⊖ DRAINAGE MANHOLE
- ⊞ CATCH BASIN
- ⊞ WATER VALVE
- ⊞ FIRE HYDRANT
- ⊞ DRAINAGE PIPE
- ⊞ LANDSCAPING ISLAND
- ⊞ GAS METER
- R.O.W LINE



**PROPOSED WORK**

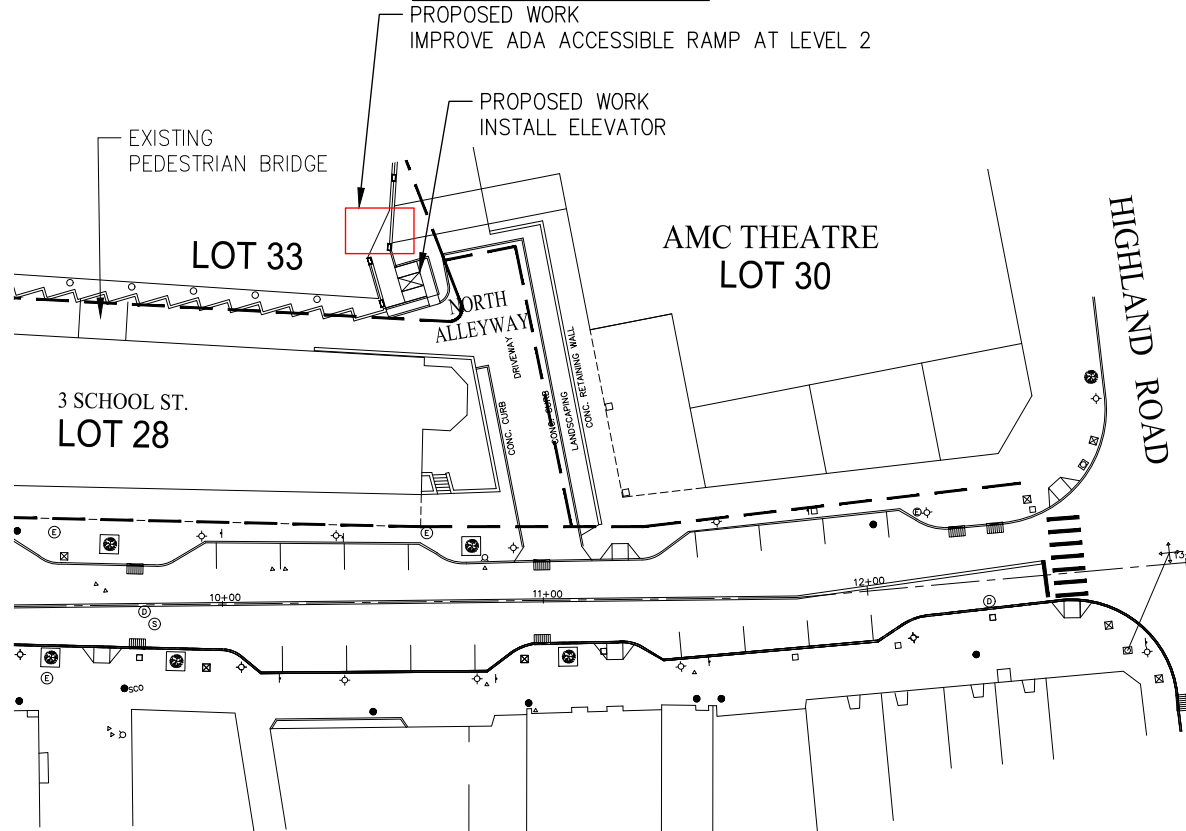
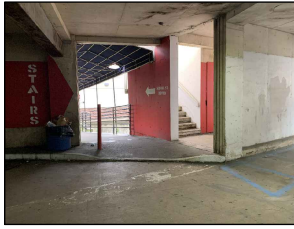
1. REPLACE TALL & DENSE VEGETATION WITH SMALLER VEGETATION.
2. ADD LIGHTING TO INCREASE VISIBILITY AND ENCOURAGE USE.
3. ADD SIGNS FOR PEDESTRIAN CONNECTION AND ADA ACCESS.

**WORK WITHIN GARAGE BUILDING:**

1. REPLACE/ENHANCE LIGHTING TO INCREASE VIABILITY.
2. REPAIR CURBS THROUGHOUT.
3. PRIORITIZE STRUCTURAL REPAIRS FROM 2015 INSPECTION REPORT.
4. INCLUDE ADDITIONAL SIGNAGE TO CLARIFY DIRECTIONS AND INDICATE LOCATIONS OF AMENITIES AND ACCESS POINTS.

**ENHANCED PEDESTRIAN CONNECTIONS PLAN  
3 SCHOOL STREET AREA**

**CITY OF GLEN COVE  
DOWNTOWN PARKING CONNECTIONS**



### LEGEND

● <sub>SC0</sub>	SANITARY SEWER CLEAN OUT
⊗	TREE PLANTING
⊠	TRASH RECEPTACLE
⋄	STREET LIGHT
⊕	ELECTRIC MANHOLE
⊖	SANITARY MANHOLE
⊙	DRAINAGE MANHOLE
⊞	CATCH BASIN
⋈	WATER VALVE
⋄	FIRE HYDRANT
---	DRAINAGE PIPE
⊠	LANDSCAPING ISLAND
⚡	GAS METER
---	R.O.W LINE

**DRAFT - NOT FOR DISTRIBUTION**

## ENHANCED PEDESTRIAN CONNECTIONS PLAN NORTH ALLEYWAY AREA

CITY OF GLEN COVE  
DOWNTOWN PARKING CONNECTIONS

### WORK WITHIN GARAGE BUILDING:

1. REPLACE/ENHANCE LIGHTING TO INCREASE VIABILITY.
2. REPAIR CURBS THROUGHOUT.
3. PRIORITIZE STRUCTURAL REPAIRS FROM 2015 INSPECTION REPORT.
4. INCLUDE ADDITIONAL SIGNAGE TO CLARIFY DIRECTIONS AND INDICATE LOCATIONS OF AMENITIES AND ACCESS POINTS.





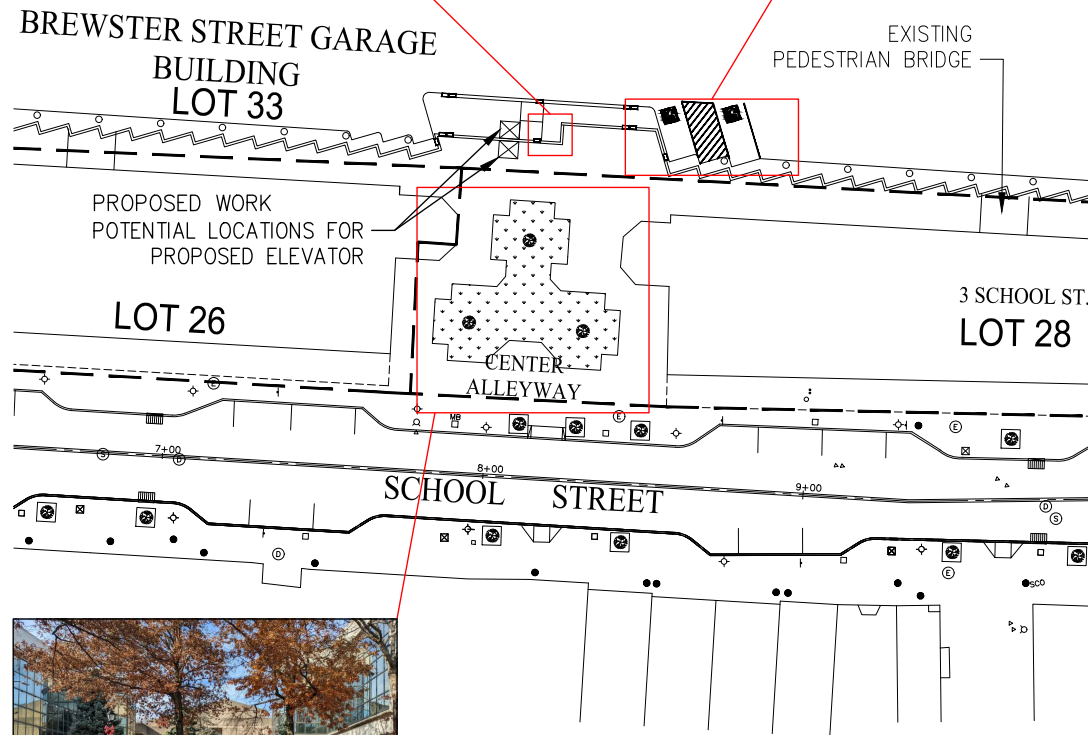
**PROPOSED WORK**

1. CLEAR VEGETATION.
2. SMOOTH OUT CONCRETE LIP AND FURNISH ADA RAMP.
3. ADD A SIGN INDICATING DIRECTION OF ADA RAMP TO THE RIGHT.



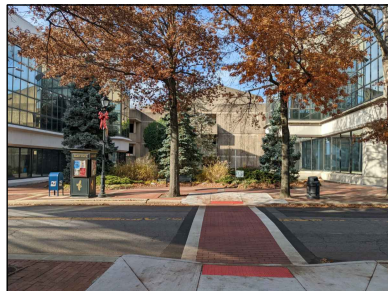
**PROPOSED WORK**

1. CONVERT NON-ADA PARKING SPOTS TO ADA ACCESSIBLE SPOTS.



**LEGEND**

- <sub>SSCO</sub> SANITARY SEWER CLEAN OUT
- ☒ TREE PLANTING
- ☒ TRASH RECEPTACLE
- ◆ STREET LIGHT
- ⊕ ELECTRIC MANHOLE
- ⊕ SANITARY MANHOLE
- ⊕ DRAINAGE MANHOLE
- ☒ CATCH BASIN
- ▲ WATER VALVE
- ▲ FIRE HYDRANT
- DRAINAGE PIPE
- ☒ LANDSCAPING ISLAND
- ⊕ GAS METER
- R.O.W. LINE



**PROPOSED WORK**

1. REPLACE TALL & DENSE VEGETATION WITH SMALLER VEGETATION.
2. ADD LIGHTING TO INCREASE VISIBILITY AND ENCOURAGE USE.
3. ADD SIGNS FOR PEDESTRIAN CONNECTION AND ADA ACCESS.

**WORK WITHIN GARAGE BUILDING:**

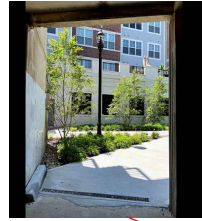
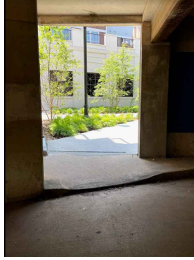
1. REPLACE/ENHANCE LIGHTING TO INCREASE VIABILITY.
2. REPAIR CURBS THROUGHOUT.
3. PRIORITIZE STRUCTURAL REPAIRS FROM 2015 INSPECTION REPORT.
4. INCLUDE ADDITIONAL SIGNAGE TO CLARIFY DIRECTIONS AND INDICATE LOCATIONS OF AMENITIES AND ACCESS POINTS.

**ENHANCED PEDESTRIAN CONNECTIONS PLAN  
CENTER ALLEYWAY AREA**

**CITY OF GLEN COVE  
DOWNTOWN PARKING CONNECTIONS**

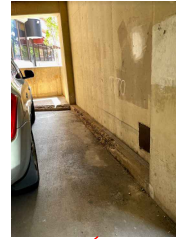
#### PROPOSED WORK

1. IMPROVE ADA ACCESSIBLE RAMPS.



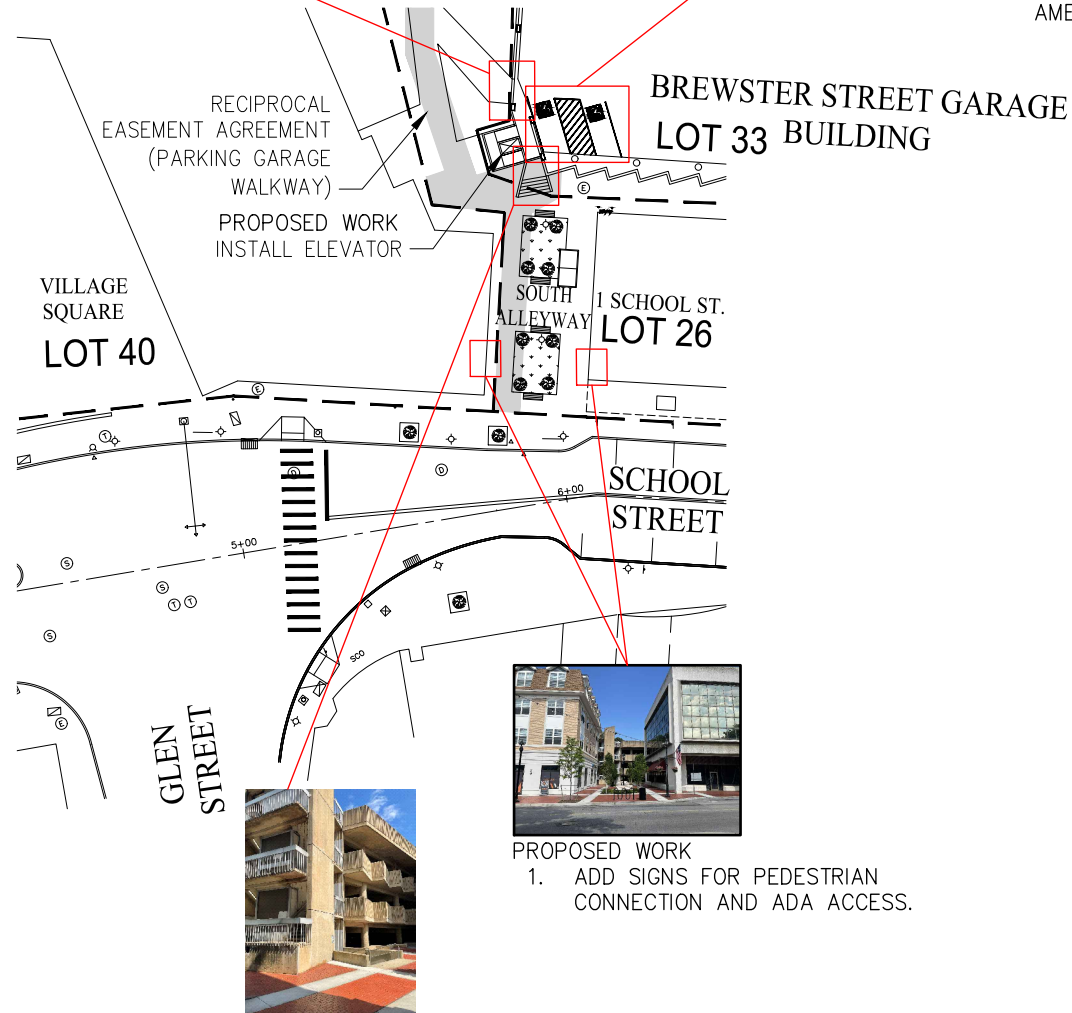
#### PROPOSED WORK

1. CONVERT NON-ADA PARKING SPOTS TO ADA ACCESSIBLE SPOTS.



#### WORK WITHIN GARAGE BUILDING:

1. REPLACE/ENHANCE LIGHTING TO INCREASE VIABILITY.
2. REPAIR CURBS THROUGHOUT.
3. PRIORITIZE STRUCTURAL REPAIRS FROM 2015 INSPECTION REPORT.
4. INCLUDE ADDITIONAL SIGNAGE TO CLARIFY DIRECTIONS AND INDICATE LOCATIONS OF AMENITIES AND ACCESS POINTS.



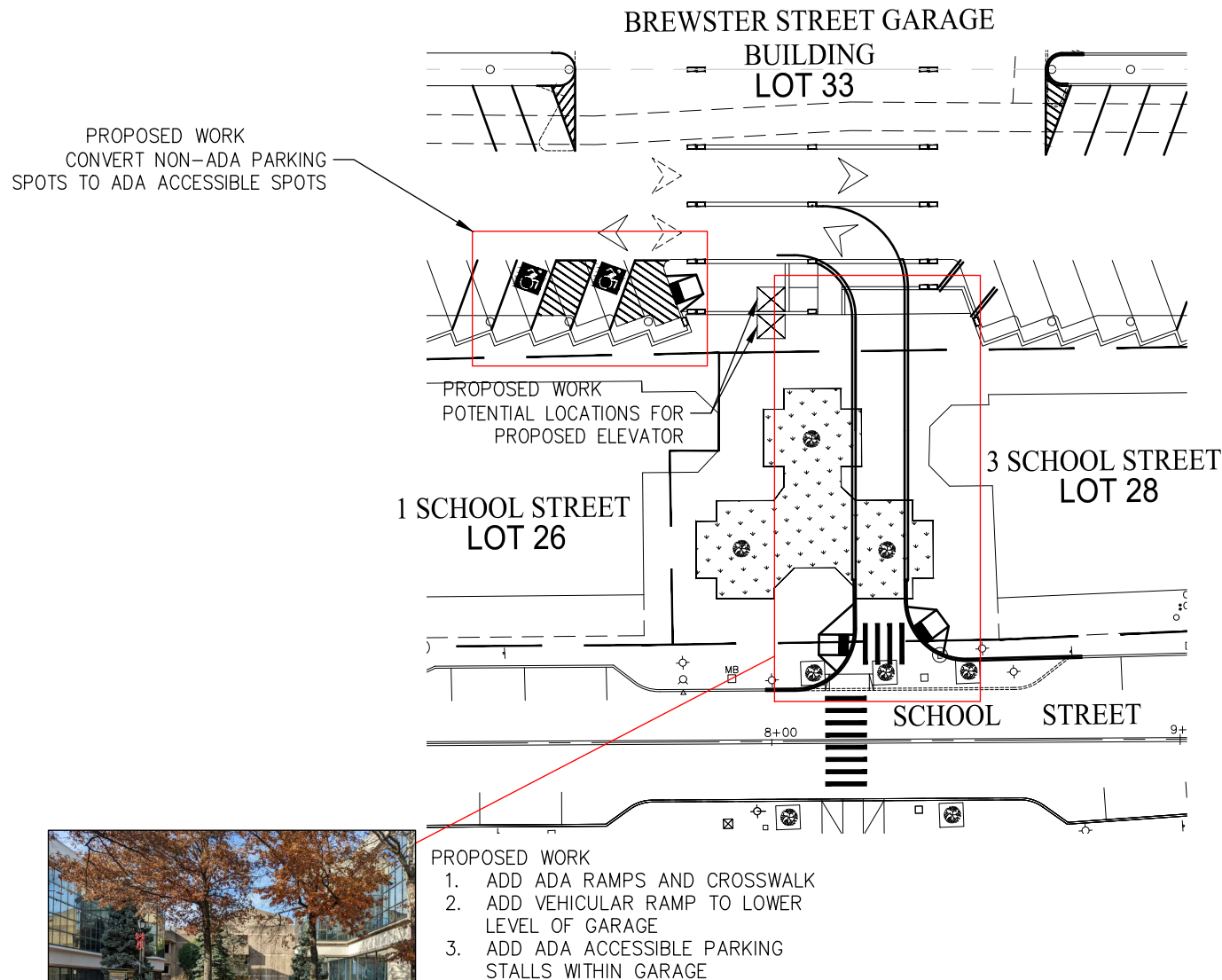
#### LEGEND

●	SANITARY SEWER CLEAN OUT
⊗	TREE PLANTING
⊠	TRASH RECEPTACLE
⊕	STREET LIGHT
⊙	ELECTRIC MANHOLE
⊖	SANITARY MANHOLE
⊗	DRAINAGE MANHOLE
⊠	CATCH BASIN
⊕	WATER VALVE
⊖	FIRE HYDRANT
---	DRAINAGE PIPE
⊠	LANDSCAPING ISLAND
⊕	GAS METER
---	R.O.W LINE

## ENHANCED PEDESTRIAN CONNECTIONS PLAN SOUTH ALLEYWAY AREA

CITY OF GLEN COVE  
DOWNTOWN PARKING CONNECTIONS

**DRAFT - NOT FOR DISTRIBUTION**



#### WORK WITHIN GARAGE BUILDING:

1. REPLACE/ENHANCE LIGHTING TO INCREASE VIABILITY.
2. REPAIR CURBS THROUGHOUT.
3. PRIORITIZE STRUCTURAL REPAIRS FROM 2015 INSPECTION REPORT.
4. INCLUDE ADDITIONAL SIGNAGE TO CLARIFY DIRECTIONS AND INDICATE LOCATIONS OF AMENITIES AND ACCESS POINTS.

#### LEGEND

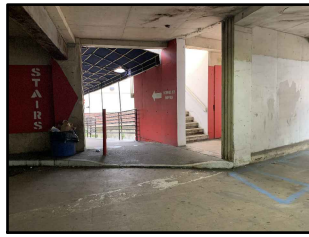
- SCO SANITARY SEWER CLEAN OUT
- ⊗ TREE PLANTING
- ⊗ TRASH RECEPTACLE
- ⊕ STREET LIGHT
- ⊕ ELECTRIC MANHOLE
- ⊕ SANITARY MANHOLE
- ⊕ DRAINAGE MANHOLE
- ⊕ CATCH BASIN
- ⊕ WATER VALVE
- ⊕ FIRE HYDRANT
- DRAINAGE PIPE
- ⊕ LANDSCAPING ISLAND
- ⊕ GAS METER
- R.O.W LINE
- PROPOSED TRAFFIC FLOW DIRECTION
- EXISTING TRAFFIC FLOW DIRECTION



### VEHICULAR CONNECTIONS PLAN CENTER CONNECTION AREA

CITY OF GLEN COVE  
DOWNTOWN PARKING CONNECTIONS

**DRAFT - NOT FOR DISTRIBUTION**



PROPOSED WORK  
IMPROVE ADA ACCESSIBLE RAMP AT LEVEL 2

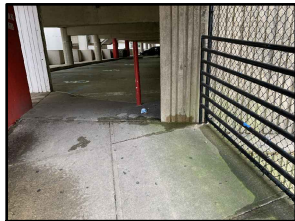


- PROPOSED WORK
1. RAISE EXISTING PEDESTRIAN BRIDGE TO NEXT LEVEL.
  2. ADD PEDESTRIAN RAMP TO STREET LEVEL.

BREWSTER STREET GARAGE  
BUILDING  
LOT 33

AMC THEATRE  
LOT 30

PROPOSED PEDESTRIAN  
RAMP TO STREET LEVEL



- PROPOSED WORK
1. IMPROVE ADA ACCESSIBLE PARKING SPOTS

PROPOSED WORK  
INSTALL ELEVATOR

3 SCHOOL STREET  
LOT 28

VEHICULAR ACCESS INTO BREWSTER STREET  
GARAGE BUILDING FROM SCHOOL STREET IS  
PROPOSED USING EXISTING DRIVEWAY.  
PROPOSED PEDESTRIAN BRIDGE WORK  
ALLOWS FOR SUFFICIENT VERTICAL  
CLEARANCE.

## LEGEND

- <sub>SCO</sub> SANITARY SEWER CLEAN OUT
- ☒ TREE PLANTING
- ☒ TRASH RECEPTACLE
- ⊕ STREET LIGHT
- ⊕ ELECTRIC MANHOLE
- ⊕ SANITARY MANHOLE
- ⊕ DRAINAGE MANHOLE
- ☒ CATCH BASIN
- ⊕ WATER VALVE
- ⊕ FIRE HYDRANT
- DRAINAGE PIPE
- ☒ LANDSCAPING ISLAND
- ⊕ GAS METER
- R.O.W LINE

- PROPOSED TRAFFIC  
FLOW DIRECTION
- EXISTING TRAFFIC  
FLOW DIRECTION

## WORK WITHIN GARAGE BUILDING:

1. REPLACE/ENHANCE LIGHTING TO INCREASE VIABILITY.
2. REPAIR CURBS THROUGHOUT.
3. PRIORITIZE STRUCTURAL REPAIRS FROM 2015 INSPECTION REPORT.
4. INCLUDE ADDITIONAL SIGNAGE TO CLARIFY DIRECTIONS AND INDICATE LOCATIONS OF AMENITIES AND ACCESS POINTS.

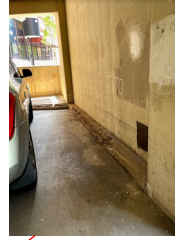
**DRAFT - NOT FOR DISTRIBUTION**

VEHICULAR CONNECTIONS PLAN  
NORTH CONNECTION AREA

CITY OF GLEN COVE  
DOWNTOWN PARKING CONNECTIONS



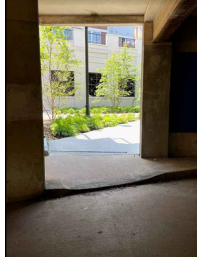
- PROPOSED WORK
1. CONVERT NON-ADA PARKING SPOTS TO ADA ACCESSIBLE SPOTS.



BREWSTER STREET GARAGE  
BUILDING  
LOT 33



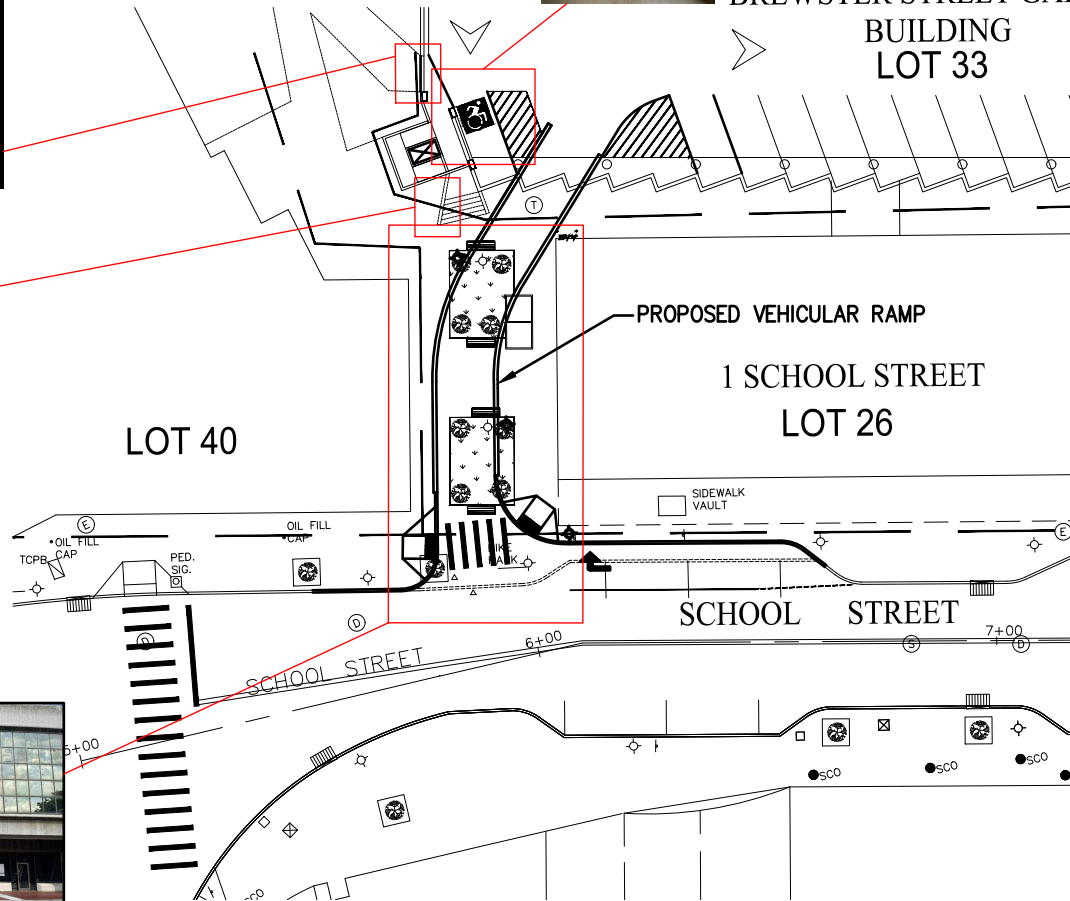
- PROPOSED WORK
1. IMPROVE ADA ACCESSIBLE RAMPS.



- PROPOSED WORK
1. ADD SIGNS INDICATING DIRECTION OF ADA ACCESSIBLE RAMP TO THE LEFT



- PROPOSED WORK
1. ADD ADA RAMPS AND CROSSWALK
  2. ADD VEHICULAR RAMP TO LOWER LEVEL OF GARAGE
  3. ADD ADA ACCESSIBLE PARKING STALLS WITHIN GARAGE



WORK WITHIN GARAGE BUILDING:

1. REPLACE/ENHANCE LIGHTING TO INCREASE VIABILITY.
2. REPAIR CURBS THROUGHOUT.
3. PRIORITIZE STRUCTURAL REPAIRS FROM 2015 INSPECTION REPORT.
4. INCLUDE ADDITIONAL SIGNAGE TO CLARIFY DIRECTIONS AND INDICATE LOCATIONS OF AMENITIES AND ACCESS POINTS.

LEGEND

- SCO SANITARY SEWER CLEAN OUT
- ☐ TREE PLANTING
- ☒ TRASH RECEPTACLE
- ◇ STREET LIGHT
- ⊕ ELECTRIC MANHOLE
- ⊕ SANITARY MANHOLE
- ⊕ DRAINAGE MANHOLE
- ☐ CATCH BASIN
- △ WATER VALVE
- ⊕ FIRE HYDRANT
- DRAINAGE PIPE
- ☐ LANDSCAPING ISLAND
- GAS METER
- R.O.W LINE

VEHICULAR CONNECTIONS PLAN  
SOUTH CONNECTION AREA

CITY OF GLEN COVE  
DOWNTOWN PARKING CONNECTIONS

DRAFT - NOT FOR DISTRIBUTION