



Contact: Brittany Bovee
Office: 844.668.7477 ext. 6
Mobile: 270.791.8723
brittany@safesidewalks.com
www.safesidewalks.com

SIDEWALK TRIP HAZARD REPAIR SUMMARY (PHASE III)



Presented to: Mike Gunn, City Manager
November 2018

The information in this summary is confidential, and is to be used only by the intended recipient and Precision Concrete Cutting in evaluating the project. Any copying or unauthorized disclosure of this information is prohibited.



Commitment Summary

COST SAVINGS

We'll repair your sidewalks for 50-90% less than sidewalk replacement, meaning you can do more for your city for less.

A.D.A. COMPLIANCE

Patented technology that helps bring sidewalks into ADA compliance.

CLEAN

Our patented containment system captures dust and debris to bring you the cleanest process available.

SAFE

Decrease liability on your pedestrian walkways.

DETAILED RISK ASSESSMENT

Our clients often report a cost savings on insurance premiums by reducing their liability and risk of trip and fall accidents.

LOW IMPACT

Efficient systems with an average removal time of 20 minutes, no sidewalk closures.

FULL SERVICE CONTRACTOR

Complete GIS integration, mapping, etc.



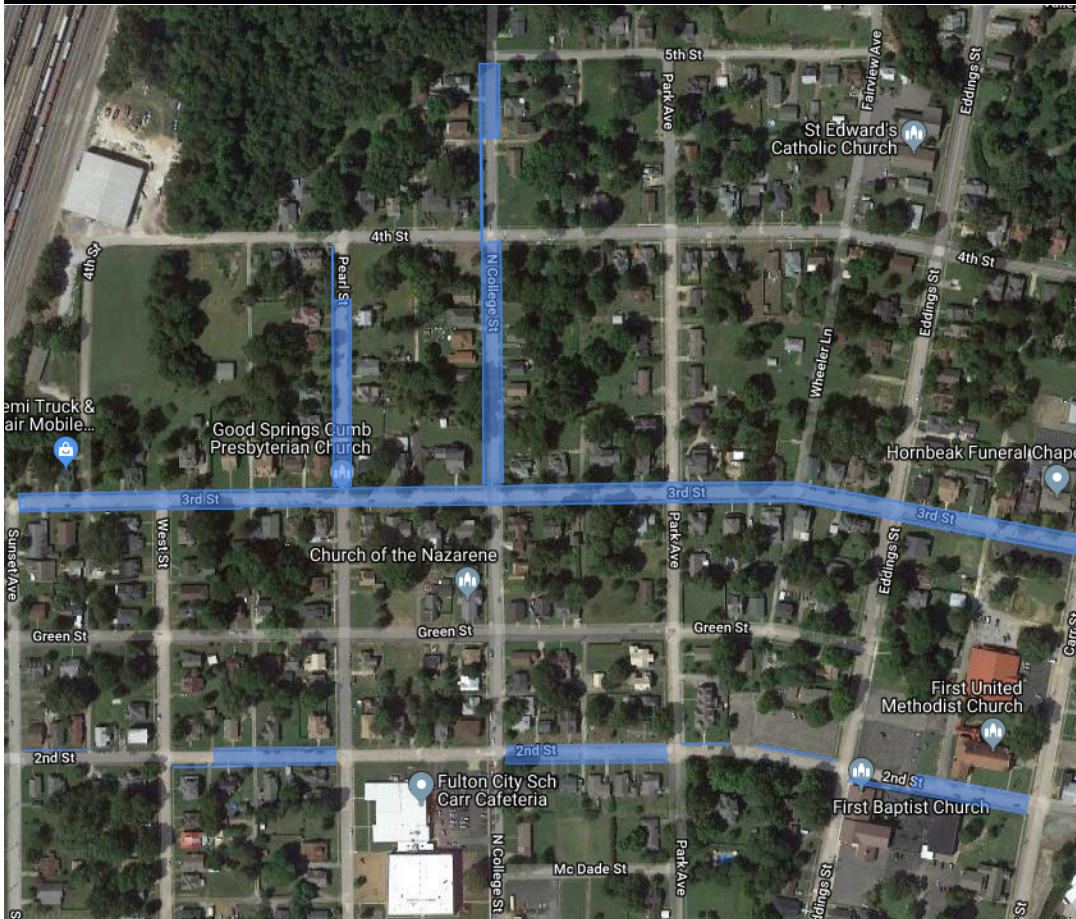
ENVIRONMENTAL IMPACT EXAMPLE: As a member of the U.S. Green Building Council (USGBC) we are proud of the fact that we reduce the impact to landfills and the environment as a result of our service.

Removing and replacing 100 panels would result in approximately 118,500 pounds or 59 tons of concrete being removed (average panel weight of 1185 pounds).

Using Precision Concrete Cutting for 100 trip hazards results in 0.3 tons of concrete removed and recycled, approximately 141 gallons of gasoline saved, and a reduction of 1.3 metric tons of Co2.



Overall Phase III Achieved Goals / Statistics



This proposal depicts the repairing of uneven sidewalks for the City of Fulton. The footprint area is highlighted in BLUE.

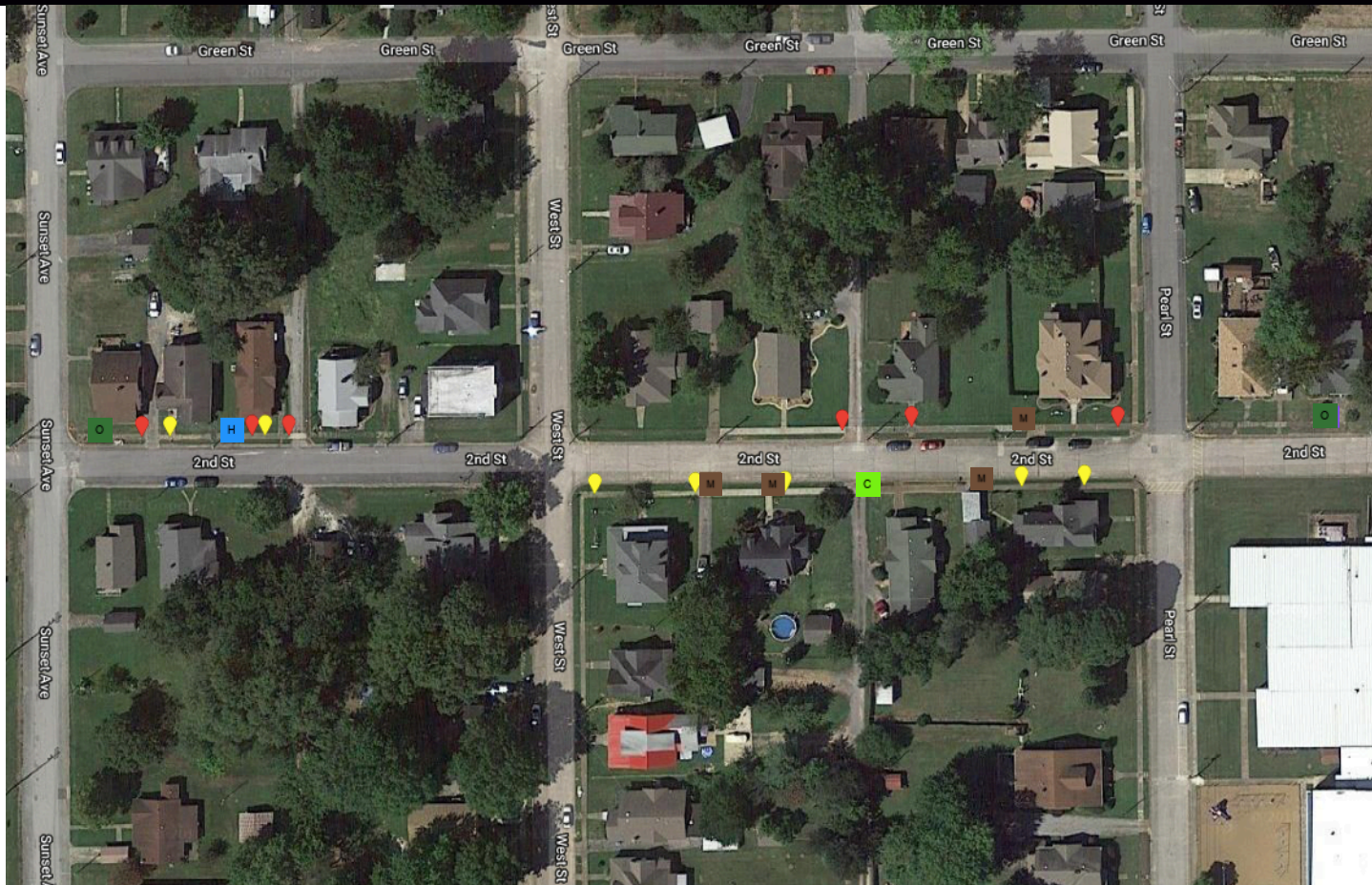
PROJECT GOALS & STATISTICS

- Extended the usable life of the City of Fulton's concrete assets & walkways.
- Constructed a sidewalk inventory within designated footprint.
- Eliminated trip hazards within high foot-traffic and right-of-way walks.
- Identified panels in need of demolish and replace within designated footprint.
- 220 hazards total identified (153 hazards repaired through PCC methods).
- 600.50 linear feet of trip hazards repaired through PCC methods.
- Overall Average Max Hazard Height: 0.506".
- Estimated savings of a total of 90.27 tons of concrete through PCC Methodology

The map in this summary shows the phase III project footprint for trip hazard repair in this part of the City of Fulton. The area has been surveyed for trip hazards for audit and trends. The accuracy of these maps is dependent on smart phone technology available, and should be relied upon as approximations.



620 2nd St to 498 2nd St

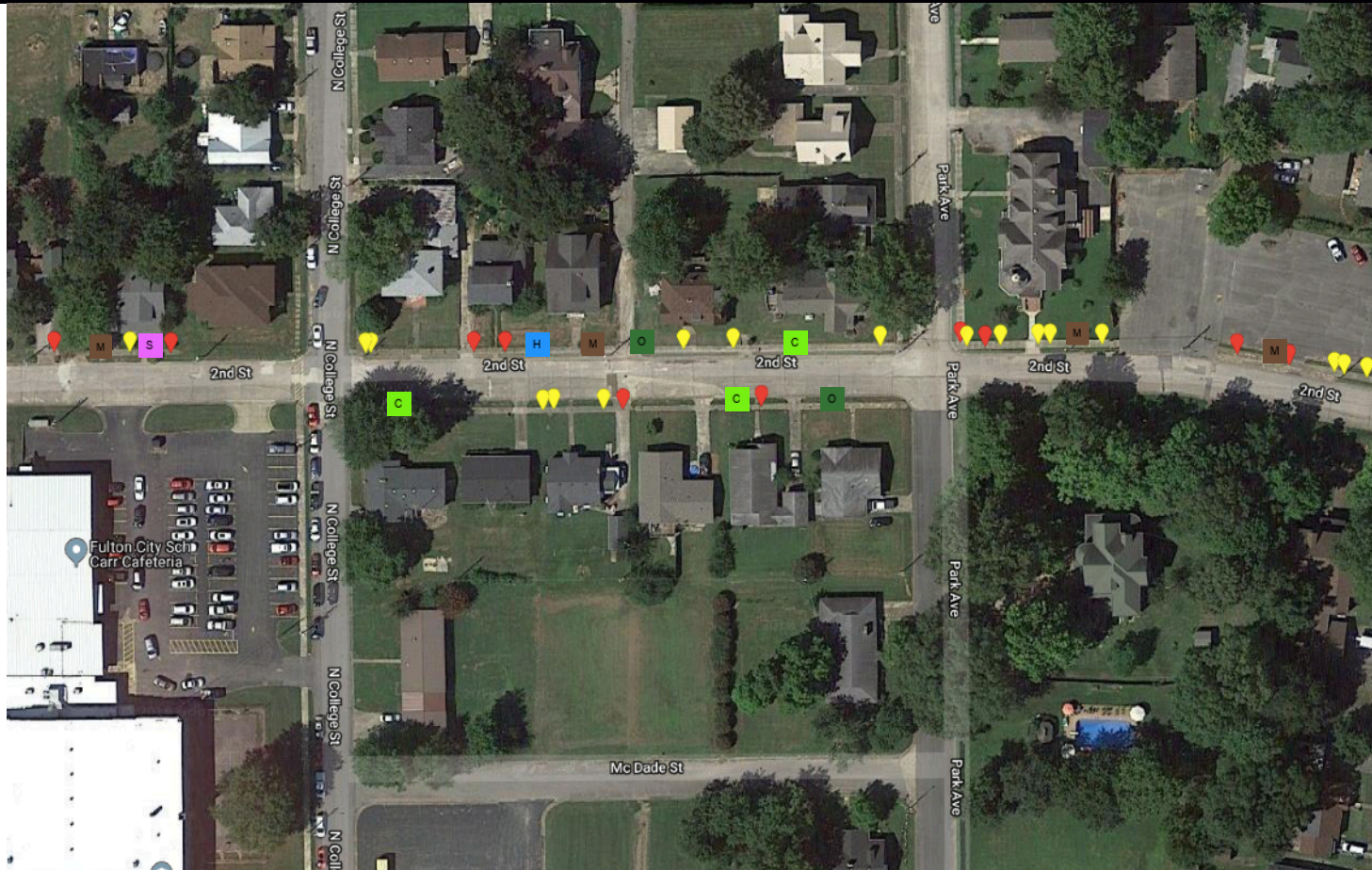


| | | |
|---------------------|------------------------|----------------------|
| C : Cracking | M : Missing | O : Overgrown |
| S : Spalling | H : Heaving | ★ : Multiple |
| U : Utility | T : Tree Damage | 📍 : 1/2" to 2" |

The map in this project summary shows the resolution area for trip hazards in this part of the city. The area has been surveyed for trip hazards for audit and trends. The accuracy of these maps is dependent on smart phone technology available, and should be relied upon as approximations.



498 2nd St to 212 2nd St

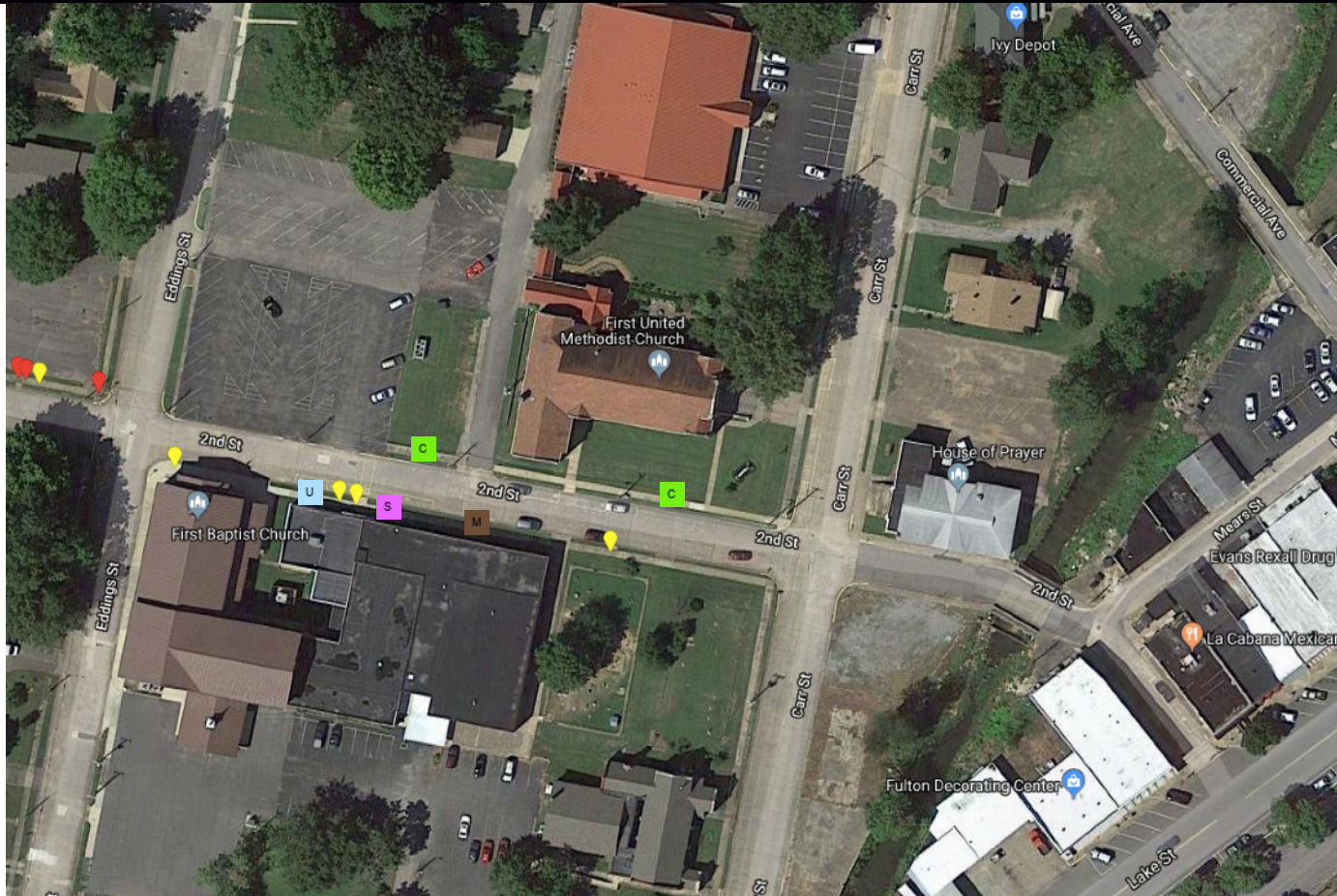


| | | |
|---------------------|------------------------|----------------------|
| C : Cracking | M : Missing | O : Overgrown |
| S : Spalling | H : Heaving | ★ : Multiple |
| U : Utility | T : Tree Damage | 📍 : ½" to 2" |

The map in this project summary shows the resolution area for trip hazards in this part of the city. The area has been surveyed for trip hazards for audit and trends. The accuracy of these maps is dependent on smart phone technology available, and should be relied upon as approximations.



212 2nd St to Int of 2nd St & Carr St

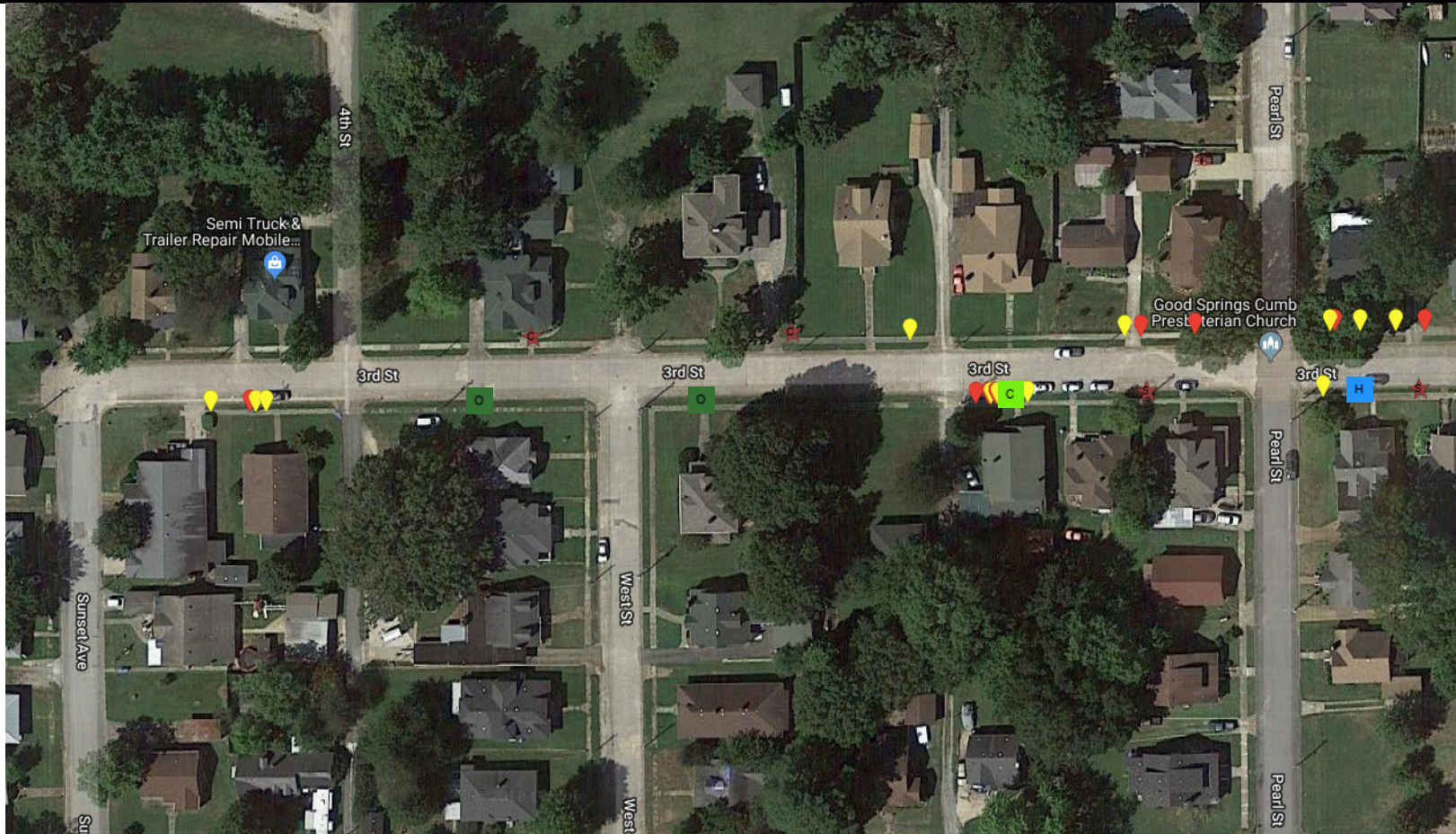


| | | |
|---------------------|------------------------|----------------------|
| C : Cracking | M : Missing | O : Overgrown |
| S : Spalling | H : Heaving | ★ : Multiple |
| U : Utility | T : Tree Damage | 📍 : 1/2" to 2" |

The map in this project summary shows the resolution area for trip hazards in this part of the city. The area has been surveyed for trip hazards for audit and trends. The accuracy of these maps is dependent on smart phone technology available, and should be relied upon as approximations.

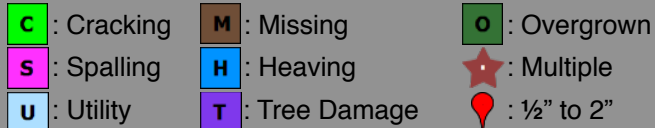


Int of Sunset Ave & 3rd St to 410 3rd St



| | | |
|---------------------|------------------------|----------------------|
| C : Cracking | M : Missing | O : Overgrown |
| S : Spalling | H : Heaving | ★ : Multiple |
| U : Utility | T : Tree Damage | 📍 : ½" to 2" |

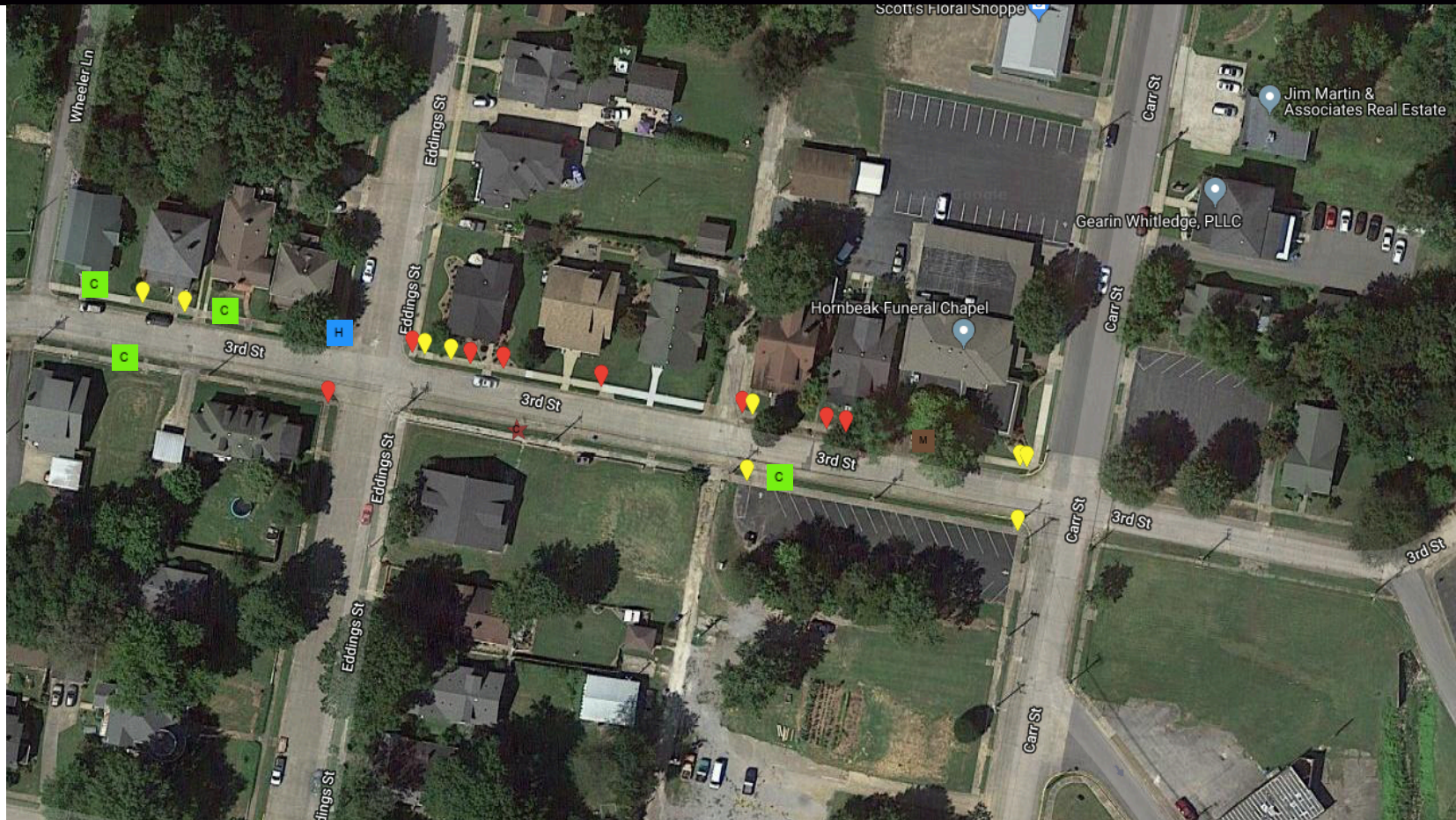
The map in this project summary shows the resolution area for trip hazards in this part of the city. The area has been surveyed for trip hazards for audit and trends. The accuracy of these maps is dependent on smart phone technology available, and should be relied upon as approximations.



The map in this project summary shows the resolution area for trip hazards in this part of the city. The area has been surveyed for trip hazards for audit and trends. The accuracy of these maps is dependent on smart phone technology available, and should be relied upon as approximations.



208 3rd St to Int of 3rd St & Carr St

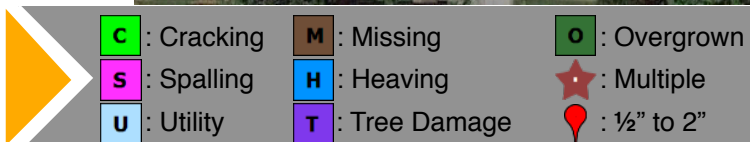
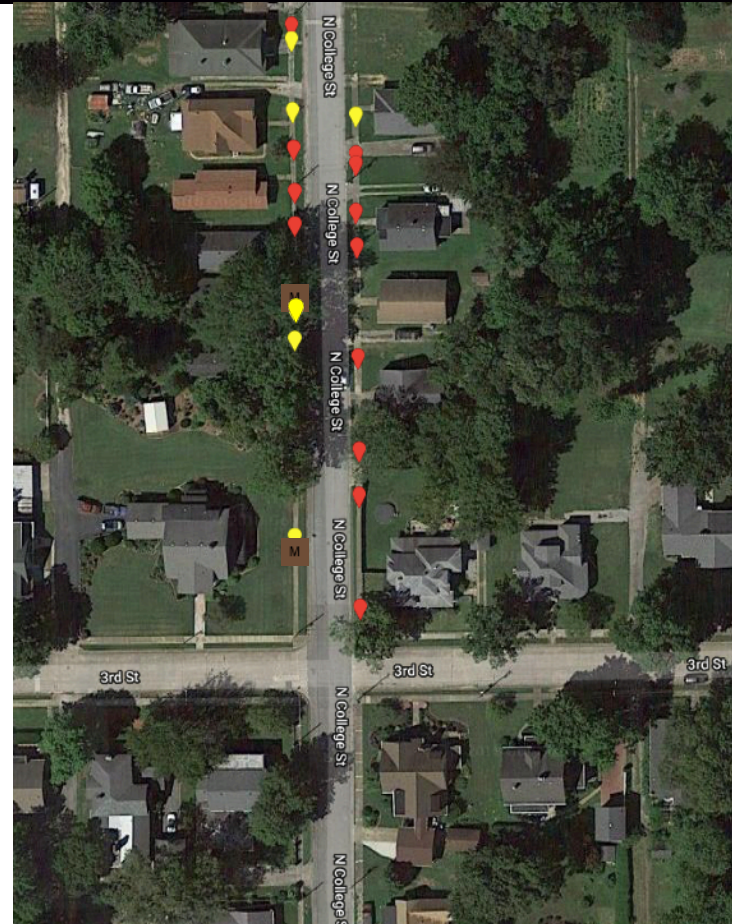
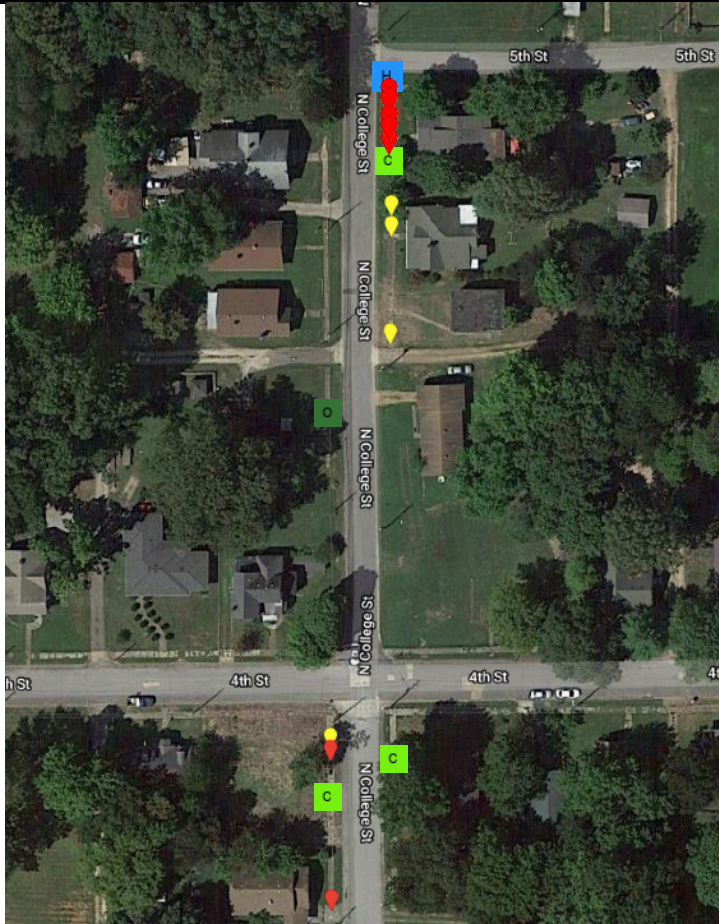


| | | |
|---------------------|------------------------|----------------------|
| C : Cracking | M : Missing | O : Overgrown |
| S : Spalling | H : Heaving | ★ : Multiple |
| U : Utility | T : Tree Damage | 📍 : 1/2" to 2" |

The map in this project summary shows the resolution area for trip hazards in this part of the city. The area has been surveyed for trip hazards for audit and trends. The accuracy of these maps is dependent on smart phone technology available, and should be relied upon as approximations.



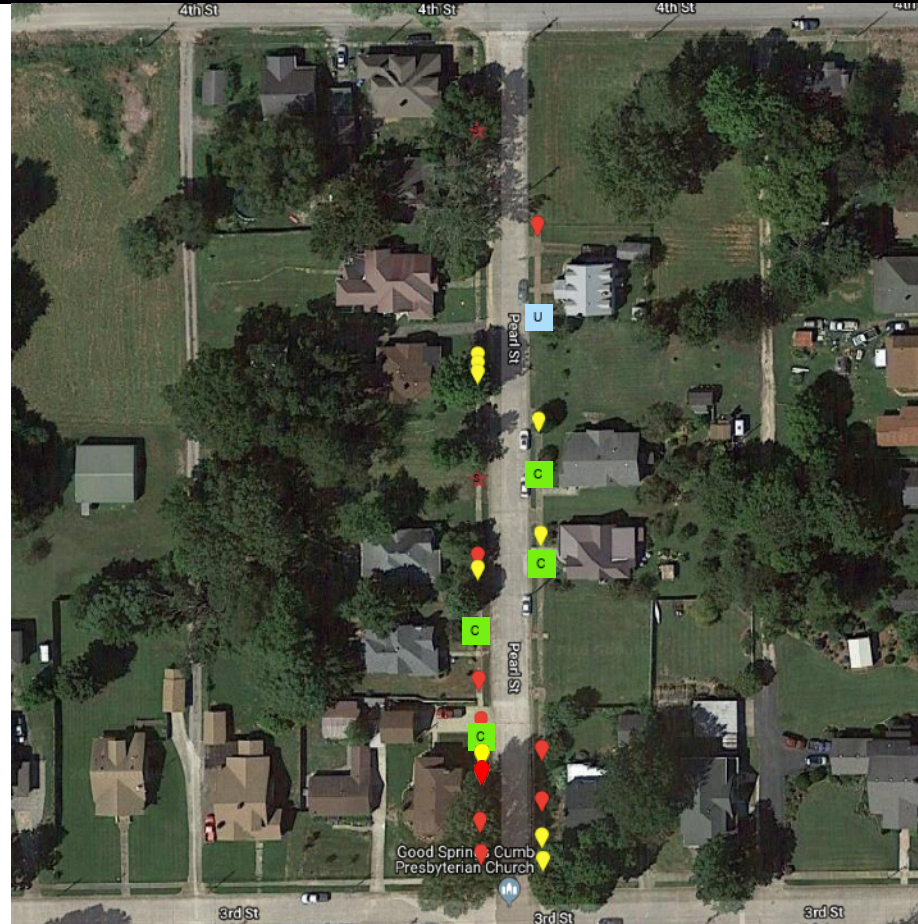
N College St



The maps in this project summary show the resolution area for trip hazards in this part of the city. The area has been surveyed for trip hazards for audit and trends. The accuracy of these maps is dependent on smart phone technology available, and should be relied upon as approximations.



Pearl St



| | | |
|---------------------|------------------------|----------------------|
| C : Cracking | M : Missing | O : Overgrown |
| S : Spalling | H : Heaving | ★ : Multiple |
| U : Utility | T : Tree Damage | 📍 : 1/2" to 2" |

The map in this project summary shows the resolution area for trip hazards in this part of the city. The area has been surveyed for trip hazards for audit and trends. The accuracy of these maps is dependent on smart phone technology available, and should be relied upon as approximations.



Repair / Observation List

| No. | Size | Size | Lineal Feet | Location | Inch Feet / Observation |
|-----|-------|-------|-------------|-------------------------------------|-------------------------|
| 1 | 0.000 | 0.000 | | 200 Carr St on 2nd St | Cracking |
| 2 | 0.000 | 0.000 | | 200 Carr St on 2nd St | Cracking |
| 3 | 0.625 | 0.000 | 11.00 | Across from 203 Edding St on 2nd St | 3.44 |
| 4 | 0.250 | 0.000 | 2.50 | Across from 203 Edding St on 2nd St | 0.31 |
| 5 | 0.750 | 0.000 | 2.50 | Across from 203 Edding St on 2nd St | 0.94 |
| 6 | 0.875 | 0.000 | 5.00 | Across from 203 Edding St on 2nd St | 2.19 |
| 7 | 0.250 | 0.000 | 1.00 | Across from 203 Edding St on 2nd St | 0.13 |
| 8 | 0.250 | 0.000 | 5.00 | Across from 203 Edding St on 2nd St | 0.63 |
| 9 | 0.250 | 0.000 | 5.00 | Across from 203 Edding St on 2nd St | 0.63 |
| 10 | 0.750 | 0.000 | 7.00 | Across from 203 Edding St on 2nd St | 2.63 |
| 11 | 0.000 | 0.000 | | Across from 203 Edding St on 2nd St | Missing |
| 12 | 0.750 | 0.000 | 5.00 | Across from 203 Edding St on 2nd St | 1.88 |
| 13 | 0.375 | 0.000 | 5.00 | 218 2nd St | 0.94 |
| 14 | 0.000 | 0.000 | | 218 2nd St multi-panel | Missing |
| 15 | 0.250 | 0.000 | 2.00 | 218 2nd St | 0.25 |
| 16 | 0.250 | 0.000 | 5.00 | 218 2nd St | 0.63 |
| 17 | 0.250 | 0.000 | 2.75 | 218 2nd St | 0.34 |
| 18 | 0.875 | 0.000 | 5.00 | 218 2nd St | 2.19 |
| 19 | 0.375 | 0.000 | 5.00 | 218 2nd St | 0.94 |
| 20 | 0.875 | 0.625 | 5.00 | 218 2nd St | 3.75 |
| 21 | 0.250 | 0.000 | 2.25 | 200 Park St on 2nd St | 0.28 |
| 22 | 0.000 | 0.000 | | 200 Park St on 2nd St multi-panel | Cracking |
| 23 | 0.375 | 0.000 | 4.00 | 306 2nd St | 0.75 |
| 24 | 0.250 | 0.000 | 1.50 | 306 2nd St | 0.19 |
| 25 | 0.000 | 0.000 | | 306 2nd St | Overgrown |

The information in this summary is confidential, and is to be used only by the intended recipient and Precision Concrete Cutting in evaluating the project. Any copying or unauthorized disclosure of this information is prohibited.



Repair / Observation List

| No. | Size | Size | Lineal Feet | Location | Inch Feet / Observation |
|-----|-------|-------|-------------|------------------------|-------------------------|
| 26 | 0.000 | 0.000 | | 308 2nd St multi-panel | Missing |
| 27 | 0.000 | 0.000 | | 308 2nd St | Heaving |
| 28 | 0.875 | 0.000 | 5.00 | 310 2nd St | 2.19 |
| 29 | 0.000 | 0.000 | | 310 2nd St | Missing |
| 30 | 0.375 | 0.000 | 2.50 | 312 2nd St | 0.47 |
| 31 | 0.250 | 0.000 | 4.50 | 312 2nd St | 0.56 |
| 32 | 0.500 | 0.000 | 5.00 | 402 2nd St | 1.25 |
| 33 | 0.000 | 0.000 | | 402 2nd St | Spalling |
| 34 | 0.250 | 0.000 | 4.00 | 402 2nd St | 0.50 |
| 35 | 0.000 | 0.000 | | 402 2nd St multi-panel | Missing |
| 36 | 0.750 | 0.000 | 4.00 | 402 2nd St | 1.50 |
| 37 | 0.000 | 0.000 | | 406 2nd St | Overgrown |
| 38 | 0.500 | 0.250 | 5.00 | 500 2nd St | 1.88 |
| 39 | 0.000 | 0.000 | | 500 2nd St multi-panel | Missing |
| 40 | 0.500 | 0.375 | 8.00 | 506 2nd St | 3.50 |
| 41 | 0.625 | 0.250 | 5.00 | 508 2nd St | 2.19 |
| 42 | 0.750 | 0.000 | 1.50 | 616 2nd St | 0.56 |
| 43 | 0.250 | 0.000 | 2.25 | 616 2nd St | 0.28 |
| 44 | 0.500 | 0.375 | 4.50 | 616 2nd St | 1.97 |
| 45 | 0.000 | 0.000 | | 616 2nd St | Heaving |
| 46 | 0.250 | 0.000 | 2.25 | 618 2nd St | 0.28 |
| 47 | 0.500 | 0.375 | 4.00 | 620 2nd St | 1.75 |
| 48 | 0.000 | 0.000 | | 620 2nd St multi-panel | Overgrown |
| 49 | 0.250 | 0.000 | 3.25 | 513 2nd St | 0.41 |
| 50 | 0.375 | 0.000 | 5.00 | 513 2nd St | 0.94 |

The information in this summary is confidential, and is to be used only by the intended recipient and Precision Concrete Cutting in evaluating the project. Any copying or unauthorized disclosure of this information is prohibited.



Repair / Observation List

| No. | Size | Size | Lineal Feet | Location | Inch Feet / Observation |
|-----|-------|-------|-------------|--|-------------------------|
| 51 | 0.000 | 0.000 | | 513 2nd St | Missing |
| 52 | 0.000 | 0.000 | | 511 2nd St | Missing |
| 53 | 0.250 | 0.250 | 5.00 | 511 2nd St | 1.25 |
| 54 | 0.000 | 0.000 | | 509 2nd St | Cracking |
| 55 | 0.000 | 0.000 | | 118 Pearl St on 2nd St multi-panel | Missing |
| 56 | 0.375 | 0.375 | 5.00 | 118 Pearl St on 2nd St | 1.88 |
| 57 | 0.375 | 0.250 | 5.00 | 118 Pearl St on 2nd St | 1.56 |
| 58 | 0.000 | 0.000 | | 311 2nd St multi-panel | Cracking |
| 59 | 0.375 | 0.000 | 5.00 | 307 2nd St | 0.94 |
| 60 | 0.250 | 0.000 | 5.00 | 307 2nd St | 0.63 |
| 61 | 0.375 | 0.000 | 5.00 | 307 2nd St | 0.94 |
| 62 | 0.750 | 0.000 | 9.00 | 307 2nd St | 3.38 |
| 63 | 0.000 | 0.000 | | 303 2nd St multi-panel | Cracking |
| 64 | 0.500 | 0.250 | 5.00 | 303 2nd St | 1.88 |
| 65 | 0.000 | 0.000 | | 301 2nd St multi-panel | Overgrown |
| 66 | 0.375 | 0.000 | 4.50 | First Baptist Church | 0.84 |
| 67 | 0.000 | 0.000 | | First Baptist Church | Utility |
| 68 | 0.250 | 0.250 | 6.00 | Entrance to First Baptist Church | 1.50 |
| 69 | 0.250 | 0.000 | 7.00 | Entrance to First Baptist Church | 0.88 |
| 70 | 0.000 | 0.000 | | Entrance to First Baptist Church multi-panel | Spalling |
| 71 | 0.000 | 0.000 | | Entrance to First Baptist Church multi-panel | Missing |
| 72 | 0.250 | 0.000 | 2.00 | Entrance to First Baptist Church play yard | 0.25 |
| 73 | 0.375 | 0.000 | 4.00 | 305 Sunset Dr on 3rd St | 0.75 |
| 74 | 0.500 | 0.000 | 4.00 | 609 3rd St | 1.00 |
| 75 | 0.250 | 0.000 | 2.50 | 609 3rd St | 0.31 |

The information in this summary is confidential, and is to be used only by the intended recipient and Precision Concrete Cutting in evaluating the project. Any copying or unauthorized disclosure of this information is prohibited.



Repair / Observation List

| No. | Size | Size | Lineal Feet | Location | Inch Feet / Observation |
|-----|-------|-------|-------------|-----------------------------------|-------------------------|
| 76 | 0.250 | 0.000 | 1.50 | 609 3rd St | 0.19 |
| 77 | 0.000 | 0.000 | | 308 West st on 3rd St multi-panel | Overgrown |
| 78 | 0.000 | 0.000 | | 515 3rd St multi-panel | Overgrown |
| 79 | 1.125 | 0.250 | 4.25 | 507 3rd St | 2.92 |
| 80 | 0.750 | 0.250 | 4.25 | 507 3rd St | 2.13 |
| 81 | 0.375 | 0.000 | 5.00 | 507 3rd St | 0.94 |
| 82 | 0.875 | 0.000 | 5.00 | 507 3rd St | 2.19 |
| 83 | 0.250 | 0.000 | 1.50 | 507 3rd St | 0.19 |
| 84 | 0.000 | 0.000 | | 507 3rd St | Cracking |
| 85 | 0.375 | 0.000 | 2.50 | 507 3rd St | 0.47 |
| 86 | 0.000 | 0.000 | | 507 3rd St multi-panel | Cracking, Missing |
| 87 | 0.375 | 0.000 | 5.00 | 411 3rd St | 0.94 |
| 88 | 0.000 | 0.000 | | 411 3rd St | Heaving |
| 89 | 0.000 | 0.000 | | 411 3rd St multi-panel | Cracking, Missing |
| 90 | 0.000 | 0.000 | | 411 3rd St multi-panel | Cracking |
| 91 | 0.375 | 0.250 | 5.00 | 411 3rd St | 1.56 |
| 92 | 0.375 | 0.250 | 6.00 | 401 3rd St | 1.88 |
| 93 | 0.000 | 0.000 | | 401 3rd St multi-panel | Cracking, Missing |
| 94 | 0.000 | 0.000 | | 313 3rd St | Missing |
| 95 | 0.625 | 0.000 | 5.00 | 313 3rd St | 1.56 |
| 96 | 0.250 | 0.000 | 1.50 | 313 3rd St | 0.19 |
| 97 | 0.250 | 0.000 | 1.00 | 313 3rd St | 0.13 |
| 98 | 0.250 | 0.000 | 1.00 | 309 3rd St | 0.13 |
| 99 | 0.500 | 0.000 | 1.50 | 309 3rd St | 0.38 |
| 100 | 0.250 | 0.000 | 1.25 | 309 3rd St | 0.16 |

The information in this summary is confidential, and is to be used only by the intended recipient and Precision Concrete Cutting in evaluating the project. Any copying or unauthorized disclosure of this information is prohibited.



Repair / Observation List

| No. | Size | Size | Lineal Feet | Location | Inch Feet / Observation |
|-----|-------|-------|-------------|--------------------------------------|----------------------------|
| 101 | 0.375 | 0.000 | 3.00 | 309 3rd St | 6.38 |
| 102 | 0.250 | 0.000 | 2.25 | 309 3rd St | 0.28 |
| 103 | 0.000 | 0.000 | | 309 3rd St | Missing |
| 104 | 0.375 | 0.000 | 5.00 | 305 3rd St | 0.94 |
| 105 | 0.000 | 0.000 | | 305 3rd St multi-panel | Cracking |
| 106 | 0.000 | 0.000 | | 219 3rd St multi-panel | Heaving |
| 107 | 0.000 | 0.000 | | 208 3rd St multi-panel | Cracking |
| 108 | 1.125 | 0.250 | 12.00 | 201 3rd St | 8.25 |
| 109 | 0.000 | 0.000 | | 308 Eddings St on 3rd St multi-panel | Heaving, Cracking, Missing |
| 110 | 0.250 | 0.000 | 2.25 | Across from 108 3rd St | 0.28 |
| 111 | 0.000 | 0.000 | | Across from 108 3rd St | Cracking |
| 112 | 0.375 | 0.000 | 2.50 | Across from 302 Carr St on 3rd St | 0.47 |
| 113 | 0.250 | 0.000 | 2.50 | 302 Carr St on 3rd St | 0.31 |
| 114 | 0.375 | 0.250 | 5.00 | 302 Carr St on 3rd St | 1.56 |
| 115 | 0.000 | 0.000 | | 302 Carr St on 3rd St | Missing |
| 116 | 0.500 | 0.000 | 4.25 | 106 3rd St | 1.06 |
| 117 | 0.500 | 0.250 | 4.25 | 106 3rd St | 1.59 |
| 118 | 0.250 | 0.000 | 3.00 | 108 3rd St | 0.38 |
| 119 | 0.750 | 0.375 | 5.00 | 108 3rd St | 2.81 |
| 120 | 0.625 | 0.000 | 4.00 | 112 3rd St | 1.25 |
| 121 | 0.500 | 0.000 | 5.00 | 116 3rd St | 1.25 |
| 122 | 0.750 | 0.375 | 5.00 | 116 3rd St | 2.81 |
| 123 | 0.375 | 0.000 | 2.50 | 116 3rd St | 0.47 |
| 124 | 0.250 | 0.000 | 1.00 | 116 3rd St | 0.13 |
| 125 | 0.625 | 0.625 | 5.00 | 116 3rd St | 3.13 |

The information in this summary is confidential, and is to be used only by the intended recipient and Precision Concrete Cutting in evaluating the project. Any copying or unauthorized disclosure of this information is prohibited.



Repair / Observation List

| No. | Size | Size | Lineal Feet | Location | Inch Feet / Observation |
|-----|-------|-------|-------------|------------------------|-------------------------|
| 126 | 0.000 | 0.000 | | 200 3rd St multi-panel | Heaving |
| 127 | 0.000 | 0.000 | | 202 3rd St multi-panel | Cracking |
| 128 | 0.250 | 0.250 | 5.00 | 204 3rd St | 1.25 |
| 129 | 0.250 | 0.000 | 2.50 | 204 3rd St | 0.31 |
| 130 | 0.000 | 0.000 | | 206 3rd St multi-panel | Cracking |
| 131 | 0.000 | 0.000 | | 208 3rd St multi-panel | Cracking |
| 132 | 0.250 | 0.250 | 5.00 | 214 3rd St | 1.25 |
| 133 | 0.250 | 0.000 | 1.50 | 214 3rd St | 0.19 |
| 134 | 0.375 | 0.000 | 5.00 | 214 3rd St | 0.94 |
| 135 | 0.750 | 0.000 | 7.00 | 214 3rd St | 2.63 |
| 136 | 0.000 | 0.000 | | 300 3rd St | Overgrown |
| 137 | 0.375 | 0.000 | 5.00 | 304 3rd St | 0.94 |
| 138 | 0.500 | 0.000 | 2.00 | 304 3rd St | 0.50 |
| 139 | 0.500 | 0.000 | 5.00 | 308 3rd St | 1.25 |
| 140 | 0.000 | 0.000 | | 308 3rd St | Cracking |
| 141 | 0.000 | 0.000 | | 313 3rd St | Cracking |
| 142 | 0.500 | 0.000 | 6.00 | 400 3rd St | 1.50 |
| 143 | 0.000 | 0.000 | | 400 3rd St | Cracking |
| 144 | 0.250 | 0.000 | 1.75 | 400 3rd St | 0.22 |
| 145 | 0.250 | 0.000 | 1.00 | 400 3rd St | 0.13 |
| 146 | 0.000 | 0.000 | | 408 3rd St multi-panel | Cracking, Missing |
| 147 | 0.500 | 0.000 | 5.00 | 408 3rd St | 1.25 |
| 148 | 0.500 | 0.000 | 5.00 | 408 3rd St | 1.25 |
| 149 | 0.375 | 0.000 | 3.25 | 410 3rd St | 0.61 |
| 150 | 0.250 | 0.000 | 5.00 | 410 3rd St | 0.63 |

The information in this summary is confidential, and is to be used only by the intended recipient and Precision Concrete Cutting in evaluating the project. Any copying or unauthorized disclosure of this information is prohibited.



Repair / Observation List

| No. | Size | Size | Lineal Feet | Location | Inch Feet / Observation |
|-----|-------|-------|-------------|--|----------------------------|
| 151 | 0.750 | 0.000 | 5.00 | 410 3rd St | 1.88 |
| 152 | 0.375 | 0.250 | 5.00 | 410 3rd St | 1.56 |
| 153 | 0.625 | 0.375 | 5.00 | 500 3rd St | 2.50 |
| 154 | 0.500 | 0.250 | 2.00 | 508 3rd St | 0.75 |
| 155 | 0.250 | 0.250 | 2.50 | 508 3rd St | 0.63 |
| 156 | 0.375 | 0.000 | 1.00 | 512 3rd St | 0.19 |
| 157 | 0.000 | 0.000 | | 512 3rd St multi-panel | Heaving, Missing |
| 158 | 0.000 | 0.000 | | 600 3rd St multi-panel | Heaving, Cracking, Missing |
| 159 | 0.000 | 0.000 | | 400 3rd St on N College St | Missing |
| 160 | 0.250 | 0.000 | 2.50 | 400 3rd St on N College St | 0.31 |
| 161 | 0.375 | 0.000 | 1.50 | 406 N College St | 0.28 |
| 162 | 0.250 | 0.000 | 1.00 | 406 N College St | 0.13 |
| 163 | 0.000 | 0.000 | | 406 N College St | Missing |
| 164 | 1.125 | 1.000 | 4.25 | 408 N College St | 4.52 |
| 165 | 1.500 | 1.375 | 4.00 | 410 N College St | 5.75 |
| 166 | 1.000 | 1.000 | 4.00 | 412 N College St | 4.00 |
| 167 | 0.250 | 0.000 | 4.00 | 412 N College St | 0.50 |
| 168 | 0.250 | 0.000 | 4.50 | 414 N College St | 0.56 |
| 169 | 1.250 | 0.000 | 9.00 | 414 N College St | 5.63 |
| 170 | 0.875 | 0.000 | 3.00 | 416 N College St | 1.31 |
| 171 | 0.000 | 0.000 | | Across from 421 N College St multi-panel | Cracking |
| 172 | 0.625 | 0.000 | 5.00 | Across from 421 N College St | 1.56 |
| 173 | 0.250 | 0.000 | 2.50 | Across from 421 N College St | 0.31 |
| 174 | 0.000 | 0.000 | | 508 N College St multi-panel | Overgrown |
| 175 | 0.000 | 0.000 | | 513 N College St | Heaving |

The information in this summary is confidential, and is to be used only by the intended recipient and Precision Concrete Cutting in evaluating the project. Any copying or unauthorized disclosure of this information is prohibited.



Repair / Observation List

| No. | Size | Size | Lineal Feet | Location | Inch Feet / Observation |
|-----|-------|-------|-------------|----------------------------|-------------------------|
| 176 | 0.500 | 0.000 | 2.75 | 513 N College St | 0.69 |
| 177 | 1.250 | 0.000 | 4.00 | 513 N College St | 2.50 |
| 178 | 0.000 | 0.000 | | 513 N College St | Missing |
| 179 | 0.875 | 0.250 | 4.00 | 513 N College St | 2.25 |
| 180 | 0.625 | 0.500 | 5.00 | 513 N College St | 2.81 |
| 181 | 0.625 | 0.625 | 4.00 | 513 N College St | 2.50 |
| 182 | 0.000 | 0.000 | | 513 N College St | Overgrown |
| 183 | 0.250 | 0.000 | 2.00 | 511 N College St | 0.25 |
| 184 | 0.250 | 0.000 | 1.50 | 511 N College St | 0.19 |
| 185 | 0.375 | 0.000 | 2.50 | 509 N College St | 0.47 |
| 186 | 0.000 | 0.000 | | 421 N College St | Cracking |
| 187 | 0.250 | 0.000 | 2.50 | 415 N College St | 0.31 |
| 188 | 0.875 | 0.750 | 5.00 | 415 N College St | 4.06 |
| 189 | 0.750 | 0.625 | 5.00 | 411 N College St | 3.44 |
| 190 | 1.125 | 0.250 | 4.50 | 411 N College St | 3.09 |
| 191 | 1.000 | 0.875 | 5.00 | 411 N College St | 4.69 |
| 192 | 0.625 | 0.000 | 5.00 | 407 N College St | 1.56 |
| 193 | 0.500 | 0.000 | 3.25 | 407 N College St | 0.81 |
| 194 | 0.500 | 0.000 | 2.50 | 312 3rd St on N College St | 0.63 |
| 195 | 0.750 | 0.000 | 4.00 | 312 3rd St on N College St | 1.50 |
| 196 | 0.750 | 0.000 | 4.00 | 500 3rd St on Pearl S | 1.50 |
| 197 | 1.625 | 1.250 | 5.00 | 500 3rd St on Pearl S | 7.19 |
| 198 | 0.875 | 0.250 | 6.50 | 500 3rd St on Pearl St | 3.66 |
| 199 | 0.375 | 0.000 | 2.50 | 500 3rd St on Pearl St | 0.47 |
| 200 | 0.000 | 0.000 | | 500 3rd St on Pearl St | Cracking |

The information in this summary is confidential, and is to be used only by the intended recipient and Precision Concrete Cutting in evaluating the project. Any copying or unauthorized disclosure of this information is prohibited.



Repair / Observation List

| No. | Size | Size | Lineal Feet | Location | Inch Feet / Observation |
|-----|-------|-------|-------------|--------------------------|-------------------------|
| 201 | 1.250 | 0.000 | 2.25 | 500 3rd St on Pearl St | 1.41 |
| 202 | 1.250 | 0.000 | 5.00 | 406 Pearl St | 3.13 |
| 203 | 0.000 | 0.000 | | 406 Pearl St | Cracking |
| 204 | 0.250 | 0.000 | 2.25 | 408 Pearl St | 0.28 |
| 205 | 0.750 | 0.000 | 3.00 | 408 Pearl St | 1.13 |
| 206 | 0.000 | 0.000 | | 408 Pearl St | Cracking, Missing |
| 207 | 0.250 | 0.000 | 1.00 | 414 Pearl St | 0.13 |
| 208 | 0.250 | 0.000 | 2.25 | 414 Pearl St | 0.28 |
| 209 | 0.250 | 0.000 | 1.00 | 414 Pearl St | 0.13 |
| 210 | 0.000 | 0.000 | | 416 Pearl St | Cracking, Overgrown |
| 211 | 0.625 | 0.000 | 10.00 | 417 Pearl St | 3.13 |
| 212 | 0.000 | 0.000 | | 417 Pearl St | Utility |
| 213 | 0.375 | 0.000 | 5.00 | 411 Pearl St | 0.94 |
| 214 | 0.000 | 0.000 | | 411 Pearl St multi-panel | Cracking |
| 215 | 0.250 | 0.000 | 2.00 | 409 Pearl St | 0.25 |
| 216 | 0.000 | 0.000 | | 409 Pearl St | Cracking |
| 217 | 1.000 | 0.000 | 1.00 | 410 3rd St on Pearl St | 0.50 |
| 218 | 1.000 | 0.000 | 3.00 | 410 3rd St on Pearl St | 1.50 |
| 219 | 0.250 | 0.000 | 3.00 | 410 3rd St on Pearl St | 0.38 |
| 220 | 0.250 | 0.000 | 2.50 | 410 3rd St on Pearl St | 0.31 |

The information in this summary is confidential, and is to be used only by the intended recipient and Precision Concrete Cutting in evaluating the project. Any copying or unauthorized disclosure of this information is prohibited.



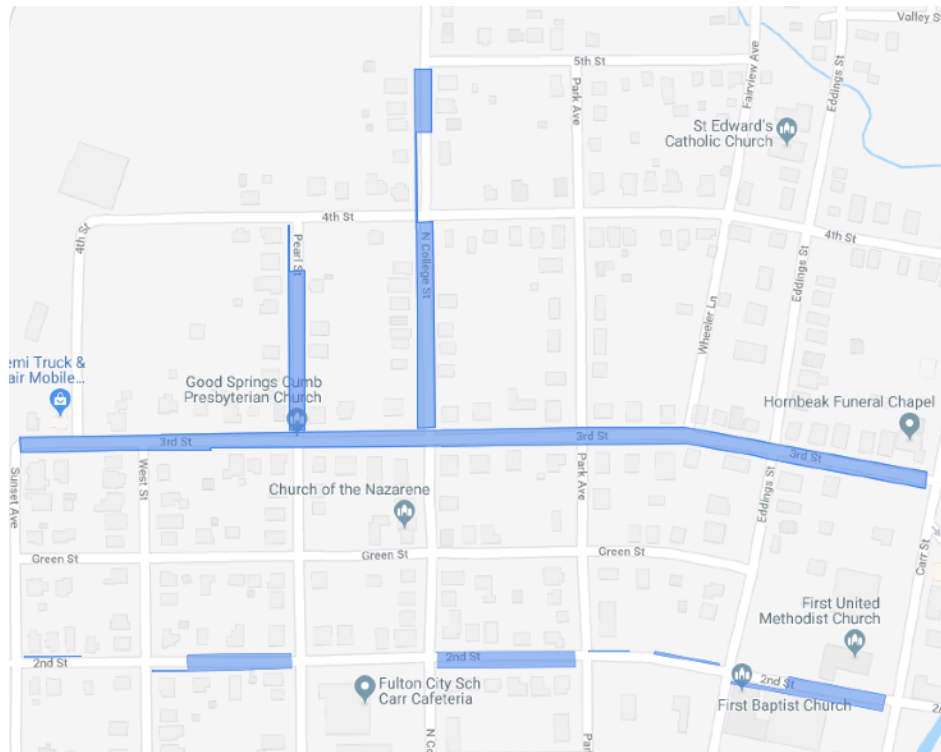
Project Details and Cost Savings Analysis

Based off **\$8.50** cost per square foot to remove and replace a sidewalk panel, we estimate the following:

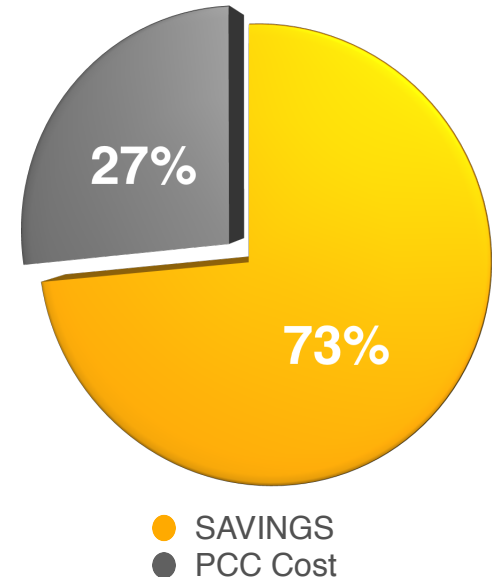
Option Elected

- 1:12 Ratio Slope
- Complete Clean Up & Recycle
- Dust Abatement System
- Detailed Audit-able Invoice
- All Hazards $\frac{1}{4}$ " to 2" Repairable by PCC Methods
- **\$18** / Linear Foot
- **Active Discounts Applied (Listed Below)**
- 1 Price per Hazard Regardless Severity
- Total Project Time: 2 days
- **ALL** Teardrop Pins ONLY

\$8,647.20



Total cost using Precision Concrete Cutting with **Option Elected** is **\$8,647.20**, an estimated savings of **\$23,865.30**.



DISCOUNTS

"20% October Discount taken off on cost (already included)"

The information in this summary is confidential and is to be used only by the intended recipient and Precision Concrete Cutting in evaluating the project. Any copying or unauthorized disclosure of this information is prohibited.