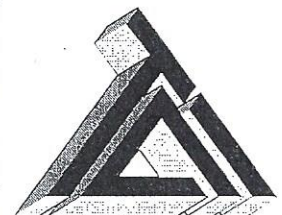


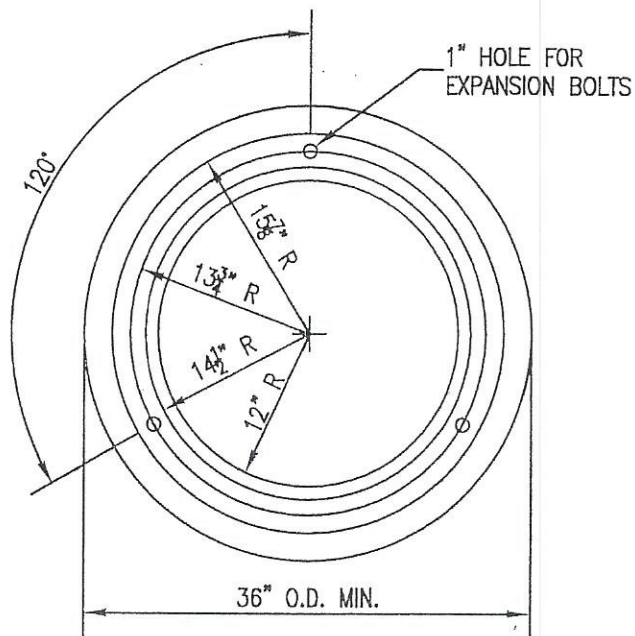
STANDARD SANITARY MANHOLE DETAIL

SCALE: NONE

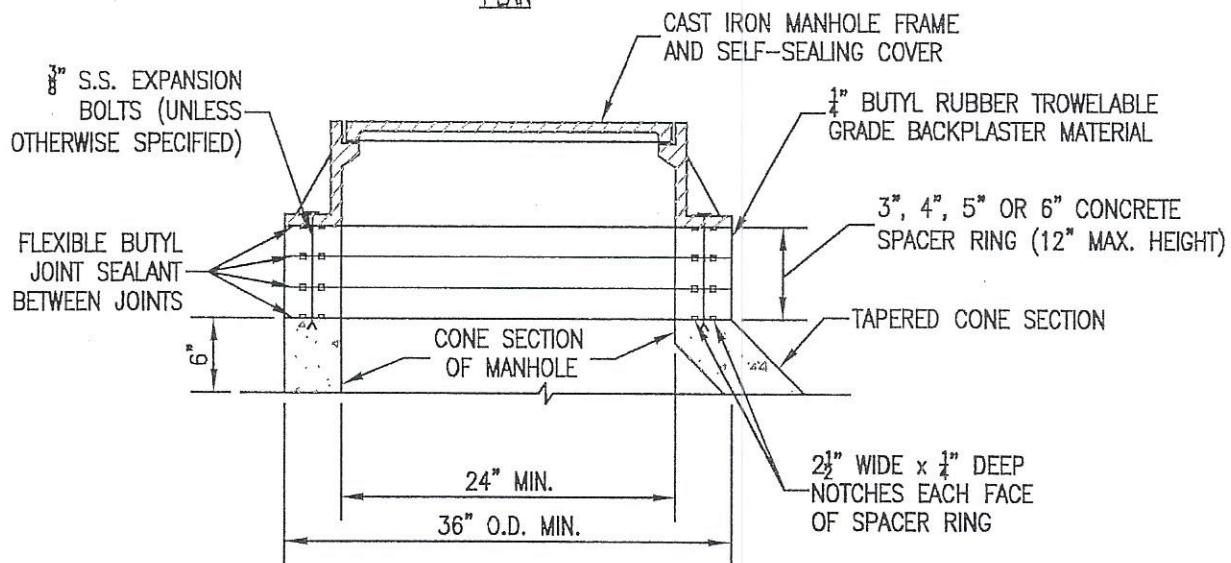


TRIAD ASSOCIATES INC.
5835 LAWTON LOOP EAST DRIVE
INDIANAPOLIS, INDIANA 46216
PHONE: 317-377-5230 FAX: 317-377-5241

2731-A



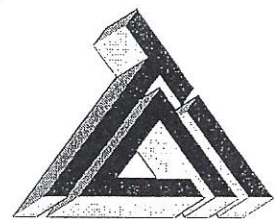
PLAN



SECTION

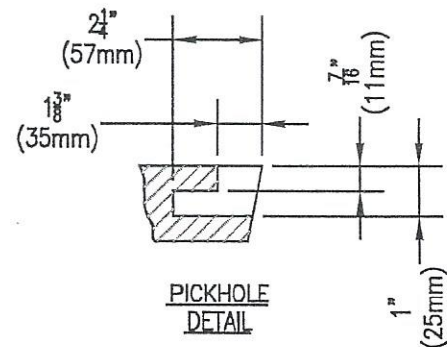
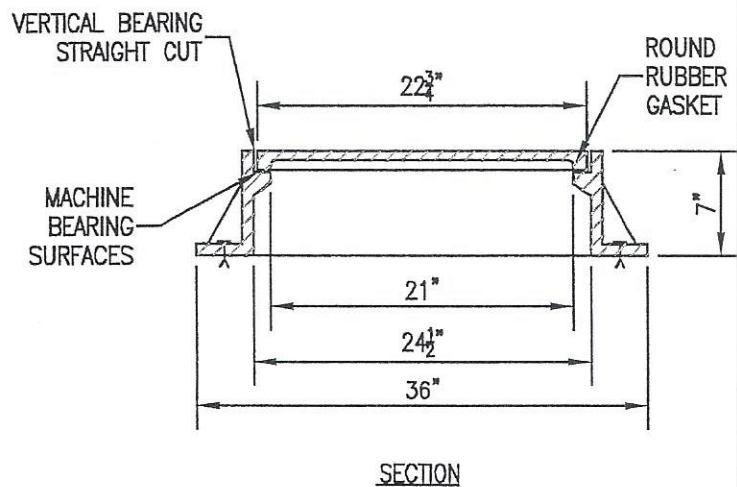
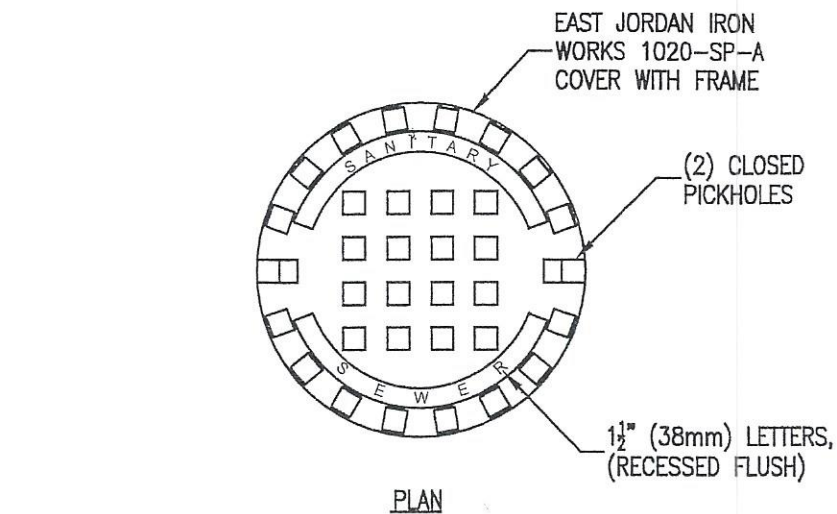
STANDARD SANITARY MANHOLE SPACER RING DETAIL

SCALE: NONE



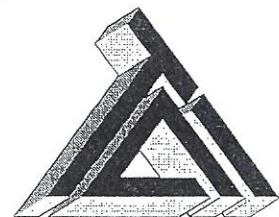
TRIAD ASSOCIATES INC.
5835 LAWTON LOOP EAST DRIVE
INDIANAPOLIS, INDIANA 46216
PHONE: 317-377-5230 FAX: 317-377-5241

2731-B



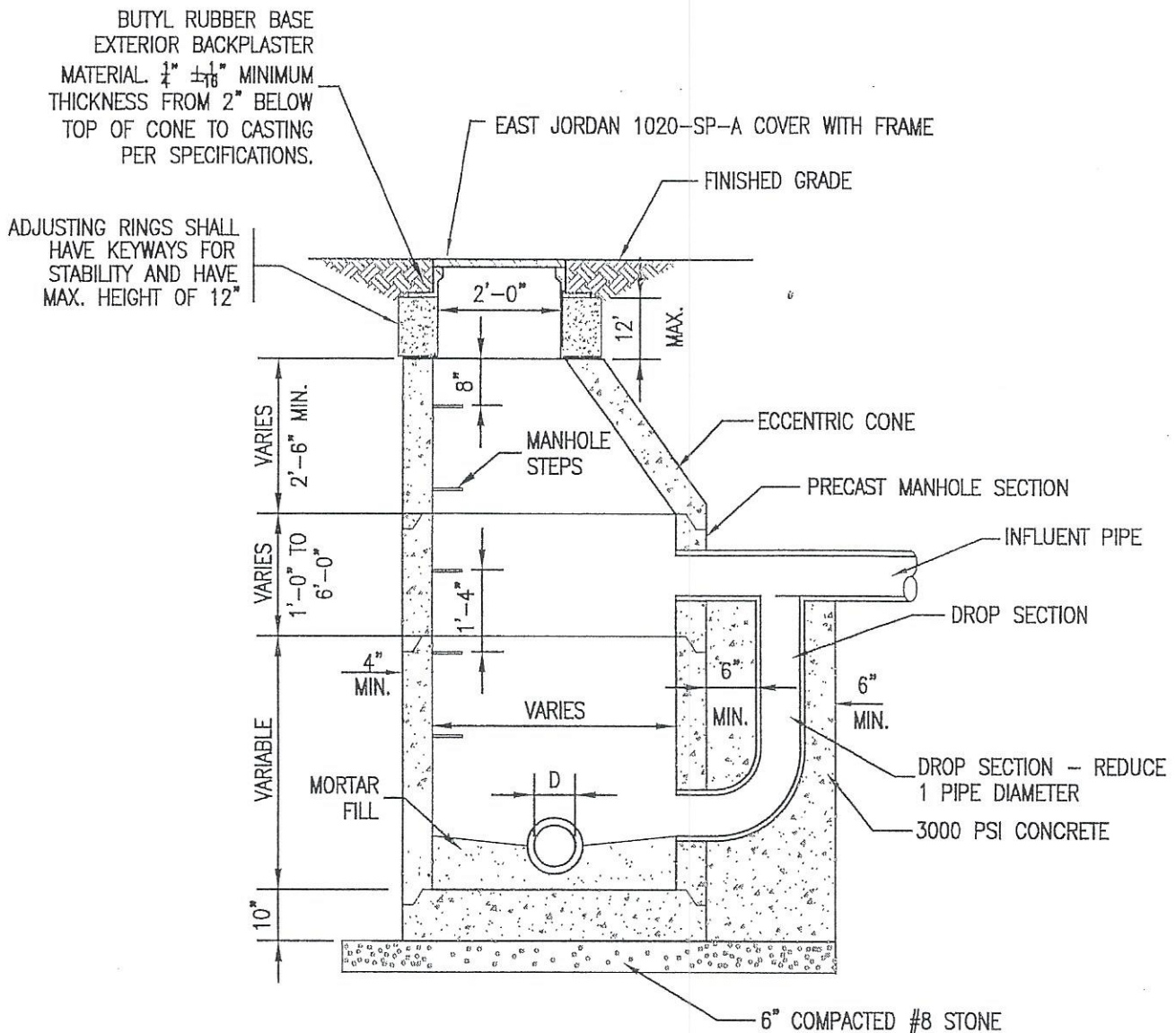
STANDARD SANITARY MANHOLE FRAME AND COVER DETAILS

SCALE: NONE



TRIAD ASSOCIATES INC.
5835 LAWTON LOOP EAST DRIVE
INDIANAPOLIS, INDIANA 46216
PHONE: 317-377-5230 FAX: 317-377-5241

2731-C



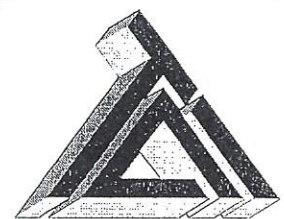
NOTE:

MANHOLE STEPS SHALL BE POLYPROPYLENE, POLYPROPYLENE COATED STEEL REINFORCING OR APPROVED NON-CORROSIVE FIBERGLASS MATERIAL. COPOLYMER POLYPROPYLENE SHALL MEET ASTM D-4101 REINFORCED WITH DEFORMED $\frac{3}{8}''$ STEEL MEETING ASTM A-615, GRADE 60.

MANHOLE CONFORMS TO ASTM C-478
JOINT CONFORMS TO ASTM C-443

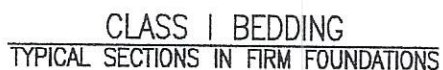
TYPICAL DROP MANHOLE DETAIL

SCALE: NONE

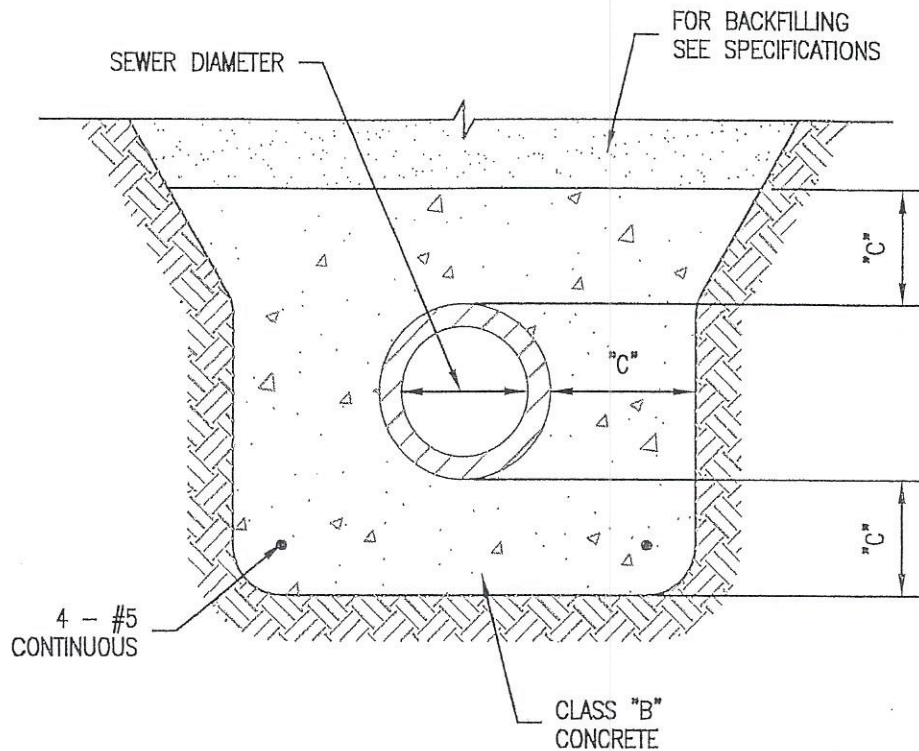


TRIAD ASSOCIATES INC.
5835 LAWTON LOOP EAST DRIVE
INDIANAPOLIS, INDIANA 46216
PHONE: 317-377-5230 FAX: 317-377-5241

2731-D



2731-E

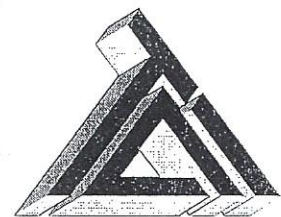


NOTE:

"C" = 6" MINIMUM OR AS INDICATED ON THE PLANS

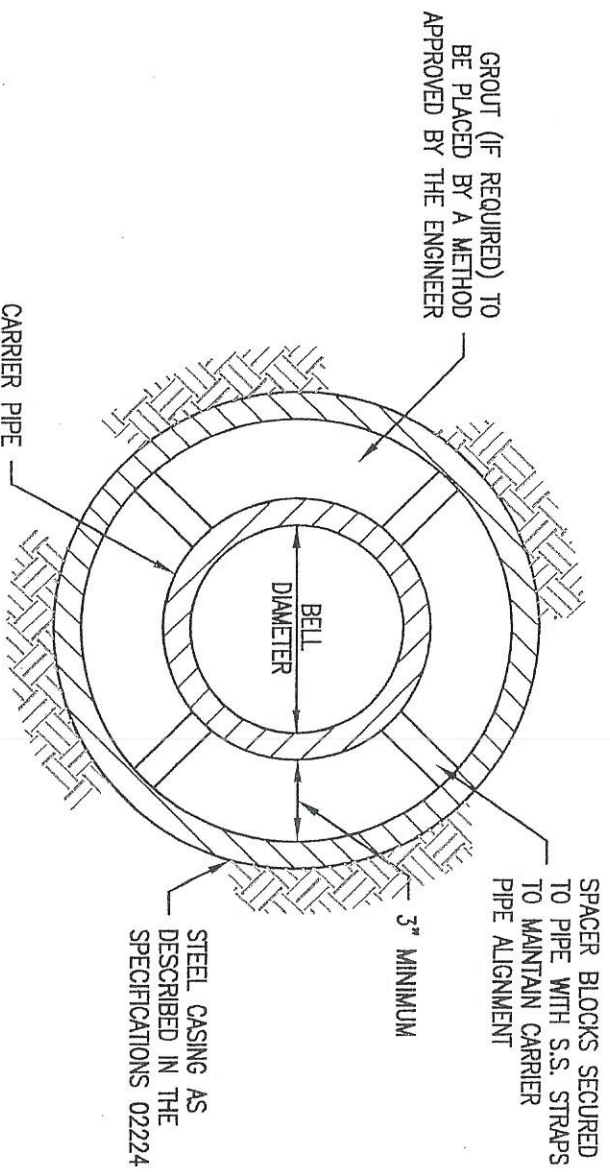
CONCRETE ENCASEMENT DETAIL

SCALE: NONE



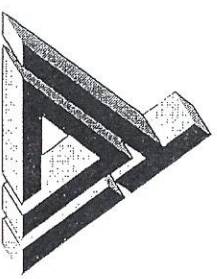
TRIAD ASSOCIATES INC.
5835 LAWTON LOOP EAST DRIVE
INDIANAPOLIS, INDIANA 46216
PHONE: 317-377-5230 FAX: 317-377-5241

2731-F



JACKING AND BORING DETAIL

SCALE: NONE

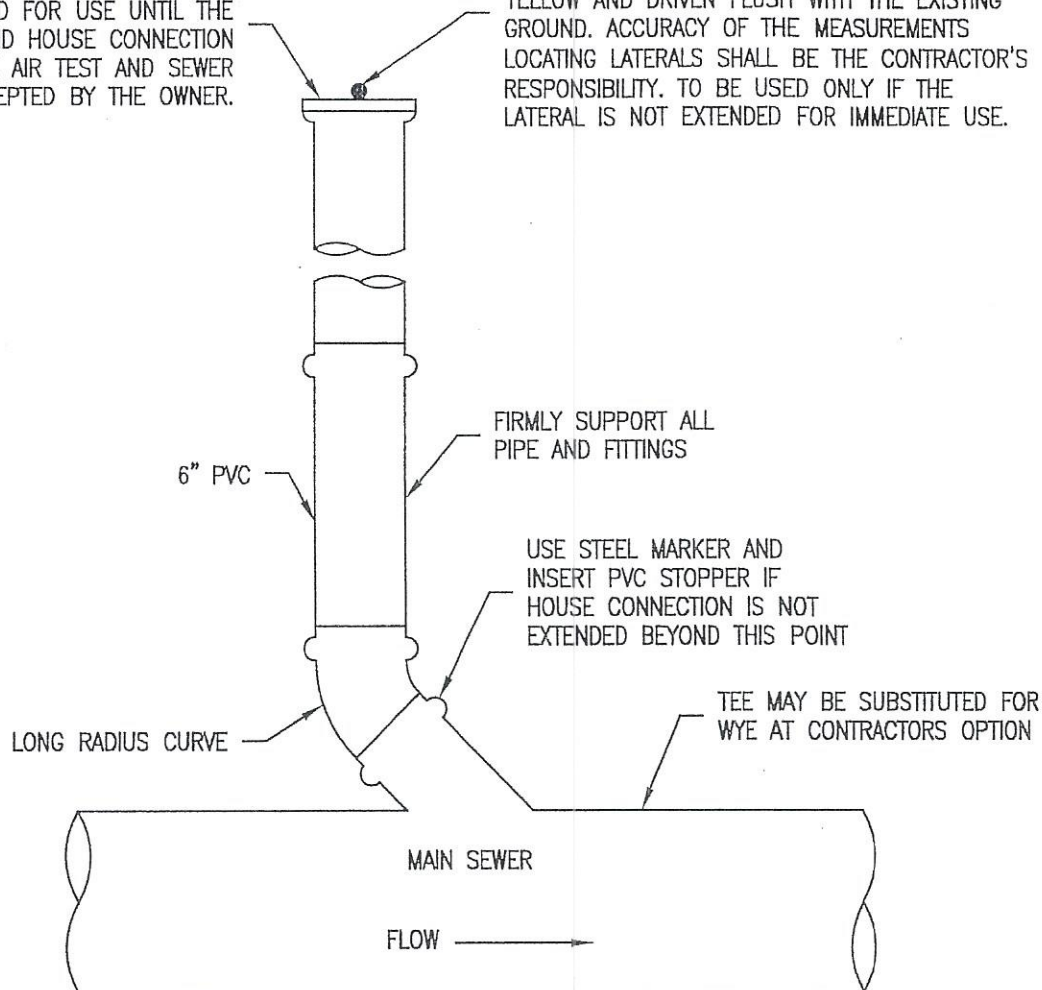


TRIAD ASSOCIATES INC.
5835 LAWTON LOOP EAST DRIVE
INDIANAPOLIS, INDIANA 46216
PHONE: 317-377-5230 FAX: 317-377-5241

2731-G

INSERT WATERTIGHT PLUG. HOUSE CONNECTION SHOULD NOT BE EXTENDED FOR USE UNTIL THE MAIN SEWER AND HOUSE CONNECTION HAVE PASSED THE AIR TEST AND SEWER HAS BEEN ACCEPTED BY THE OWNER.

CONTRACTOR TO MARK ENDS OF EACH LATERAL WITH $\frac{5}{8}$ " DIAMETER, 5'-0" LONG STEEL ROD PLACED VERTICALLY, ROD SHALL BE PAINTED YELLOW AND DRIVEN FLUSH WITH THE EXISTING GROUND. ACCURACY OF THE MEASUREMENTS LOCATING LATERALS SHALL BE THE CONTRACTOR'S RESPONSIBILITY. TO BE USED ONLY IF THE LATERAL IS NOT EXTENDED FOR IMMEDIATE USE.

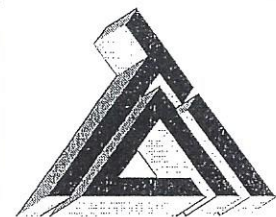


HOUSE/BUILDING SERVICE CONNECTION DETAIL

SCALE: NONE

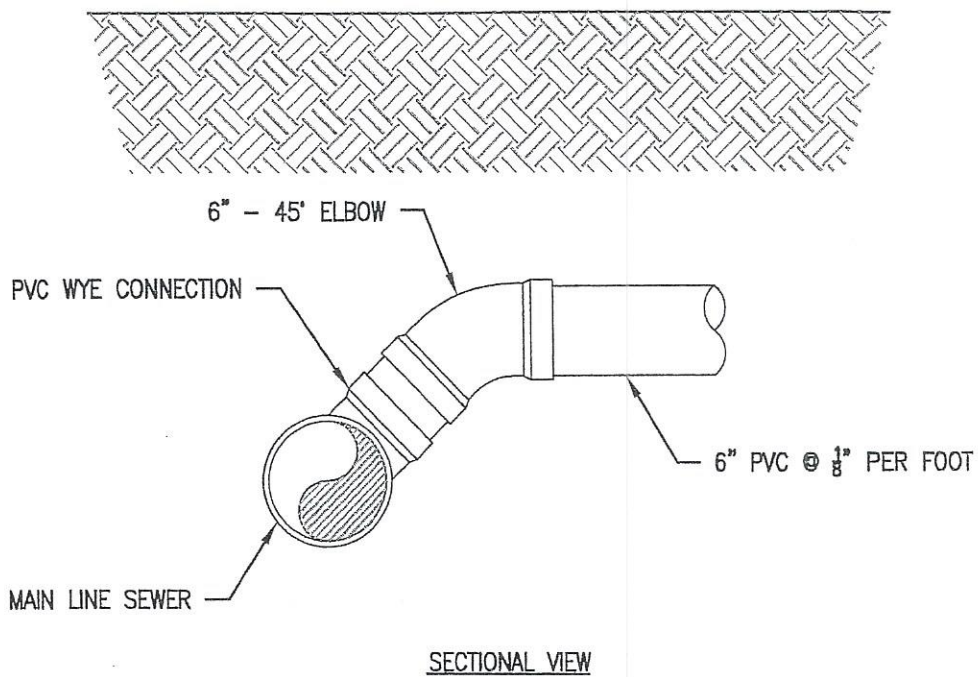
NOTES

1. WYE BRANCHES OR TEES SHALL BE INSTALLED WHERE DESIRED BY PROPERTY OWNER OR WHERE INDICATED ON THE DRAWINGS. THEY SHALL BE EXTENDED TO PROPERTY LINE OF STREETS OR ALLEYS OR TO DISTANCES AS SHOWN ON THE DESIGN DRAWINGS AND SHALL BE OF 6" SDR-26 PVC UNLESS OTHERWISE SHOWN.
2. DEPTH AT PROPERTY LINE SHALL BE APPROXIMATELY 8'-0" UNLESS SEWER DEPTH IS LESS, IN WHICH EVENT A MINIMUM SLOPE OF $\frac{1}{8}$ " PER 1'-0" SHALL BE USED.
3. HOUSE SERVICE PIPE SHALL BE SDR-26 PVC CONFORMING TO ASTM C-3034 WITH GASKETED JOINTS CONFORMING TO ASTM C-3212 UNLESS OTHERWISE INDICATED.
4. HOUSE SERVICE PIPE SHALL BE INSTALLED PER SAME SPECIFICATIONS AND DETAIL AS FOR MAIN LINE SEWER.



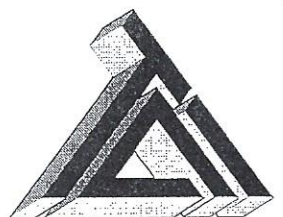
TRIAD ASSOCIATES INC.
5835 LAWTON LOOP EAST DRIVE
INDIANAPOLIS, INDIANA 46216
PHONE: 317-377-5230 FAX: 317-377-5241

2731-H



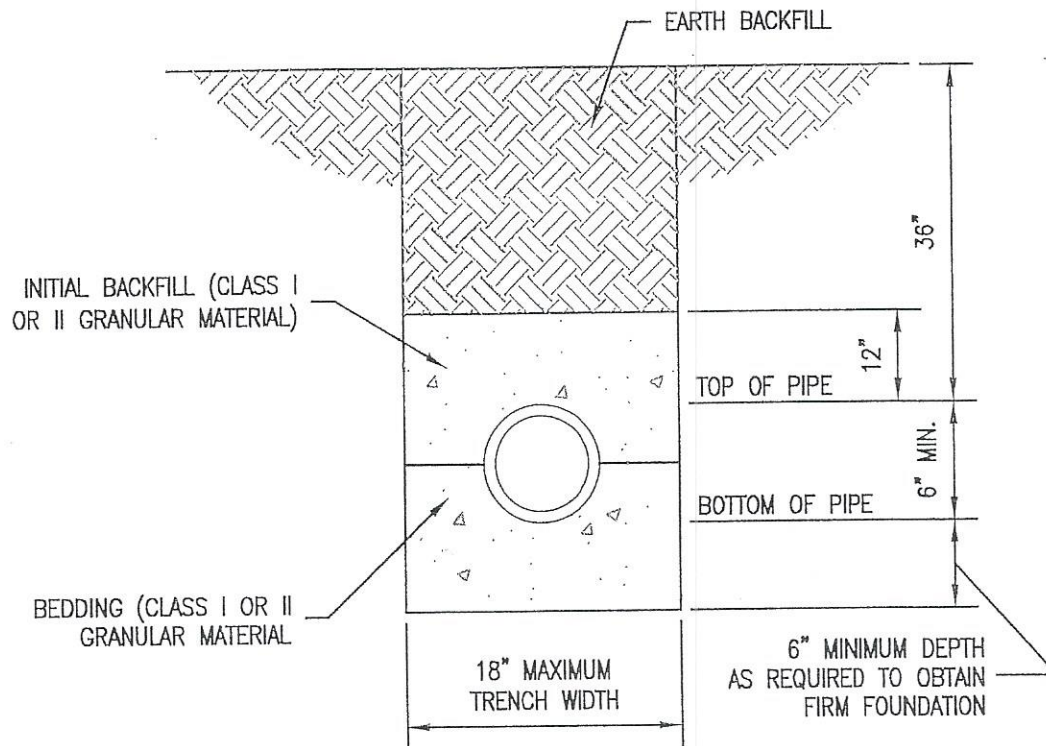
HOUSE BUILDING SERVICE CONNECTION VIEW 2

SCALE: NONE



TRIAD ASSOCIATES INC.
5835 LAWTON LOOP EAST DRIVE
INDIANAPOLIS, INDIANA 46216
PHONE: 317-377-5230 FAX: 317-377-5241

2731-I

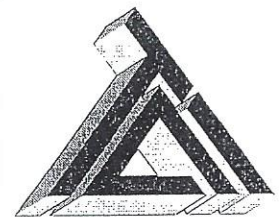


NOTES:

1. NOMINAL PIPE SIZE. (6" MIN.)
2. INSTALLATION OF FLEXIBLE PVC PIPE SHALL BE IN ACCORDANCE WITH SPECIFICATIONS CONTAINED IN ASTM D-2321.
3. CLASS I GRANULAR MATERIAL SHALL BE 1/4" TO 1 1/2" GRADED STONE, PER ASTM D-2321 (#8 CRUSH STONE).
4. CLASS II GRANULAR MATERIAL SHALL BE COARSE SANDS AND GRAVELS MAXIMUM PARTICLE SIZE OF 3/4"

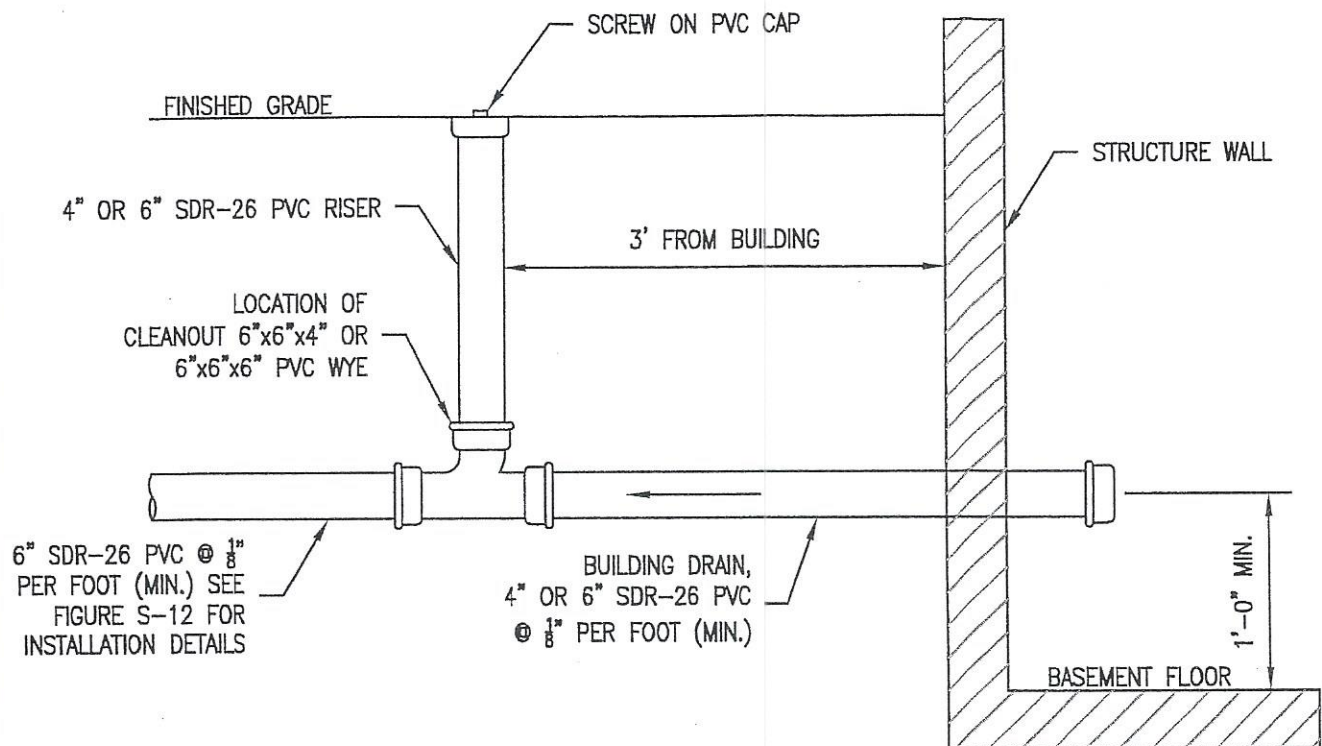
HOUSE/BUILDING SERVICE BEDDING DETAILS

SCALE: NONE



TRIAD ASSOCIATES INC.
5835 LAWTON LOOP EAST DRIVE
INDIANAPOLIS, INDIANA 46216
PHONE: 317-377-5230 FAX: 317-377-5241

2731-J

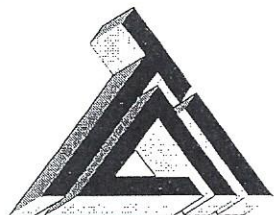


CLEAN-OUT LOCATIONS

1. AT THE JUNCTION OF BUILDING DRAIN AND BUILDING SEWER (NEAR EXTERIOR FACE OF BUILDING).
2. IF BUILDING SEWER IS MORE THAN 100 FEET FROM MAIN LINE SEWER, CLEAN-OUTS SPACING SHALL NOT EXCEED 100 FEET.
3. A CLEAN-OUT IS REQUIRED AT EACH BEND THAT IS GREATER THAN 45 DEGREES.
4. THERE SHALL BE NO BASEMENT DRAINS CONNECTED TO SERVICE CONNECTION.

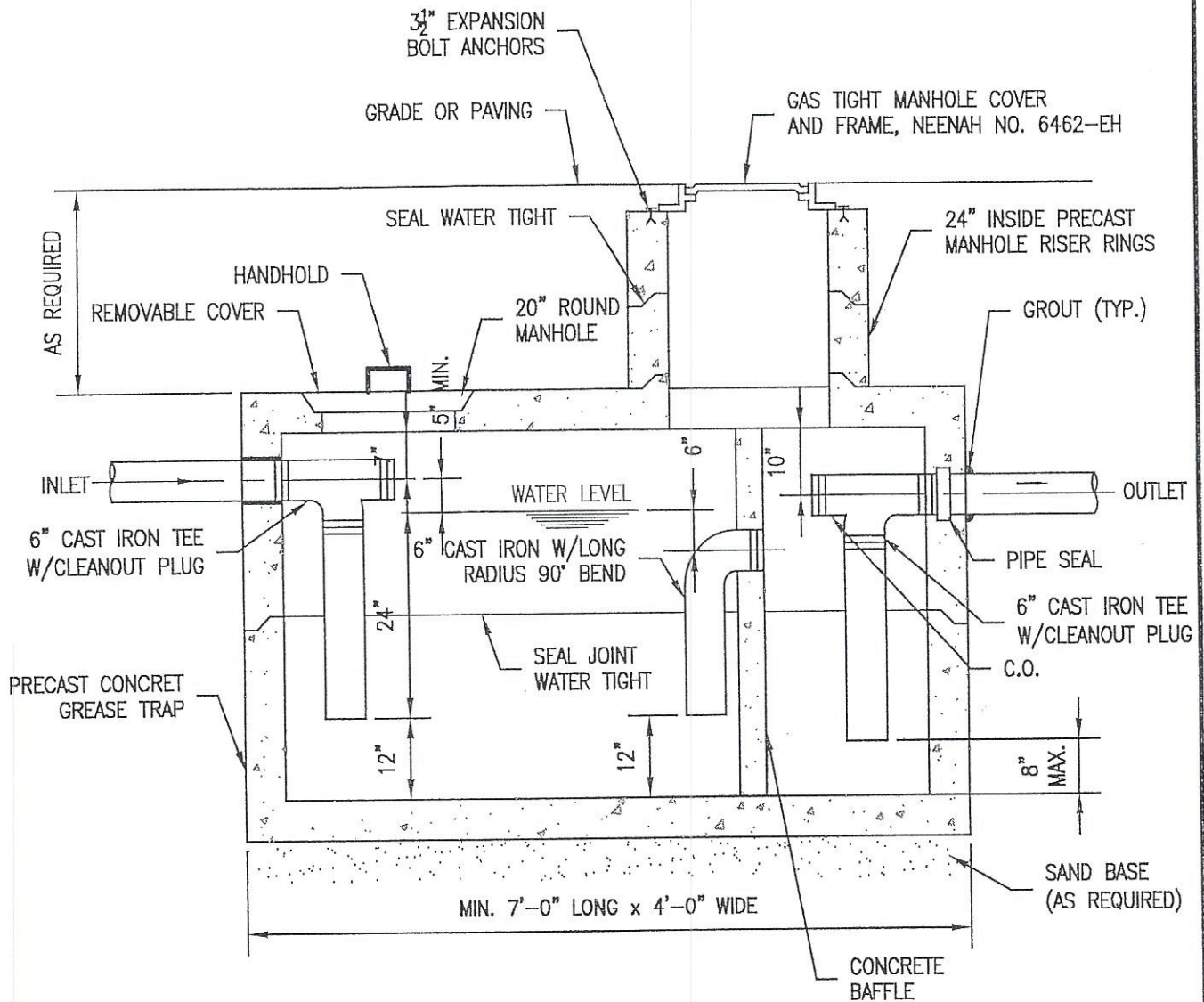
HOUSE/BUILDING SERVICE CLEAN-OUT DETAIL

SCALE: NONE



TRIAD ASSOCIATES INC.
 5835 LAWTON LOOP EAST DRIVE
 INDIANAPOLIS, INDIANA 46216
 PHONE: 317-377-5230 FAX: 317-377-5241

2731-K

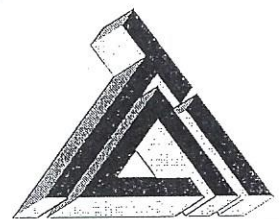


NOTES:

1. ALL TANK JOINTS SHALL BE SEALED WATERTIGHT WITH BUTYL RUBBER EXTRUDABLE PREFORMED GASKET MATERIAL, HAMILTON KENT-SEAL OR EQUAL.
2. ALL OUTSIDE RISER RINGS SURFACES SHALL BE WATERPROOFED 1/8" WITH TROWELABLE GRADE BUTYL RUBBER BACK PLASTER.
3. PIPE SEALS SHALL BE TUF-TITE, POLYLOK OR EQUAL.

GREASE TRAP

SCALE: NONE



TRIAD ASSOCIATES INC.
5835 LAWTON LOOP EAST DRIVE
INDIANAPOLIS, INDIANA 46216
PHONE: 317-377-5230 FAX: 317-377-5241

2731-L