

Help Us Improve Robert Baumann Memorial Park!

Robert Baumann Memorial Park has long been a special place for our community—a home for baseball games, family gatherings, and outdoor fun. Now, we have the opportunity to make it even better, but we need your help to make it happen!

Our Vision for the Park

We hope to bring much-needed updates that will make the park safer, more accessible, and more enjoyable for everyone. These improvements will only be possible with community support and funding.

| | |
|--|--|
| <div><div></div><div>DONOR FIRST NAME</div></div> | <div><div></div><div>DONOR LAST NAME</div></div> |
| <div><div></div><div>DONOR PHONE NUMBER #</div></div> | <div><div></div><div>DONOR Email ADDRESS</div></div> |
| <div><div></div><div>DONOR MAILING ADDRESS</div></div> | |
| <div><div></div><div>REASON FOR DONATION</div></div> | |
| <div><div></div><div>AMOUNT OF DONATION</div></div> | |
| <div><div></div><div>\$</div></div> | |

If sending a check via United States Postal Service, use the following:

Town of Forestville
Robert Baumann Memorial Park Fund
P.O.Box 175
Forestville, Wisconsin 54213

Proposed Improvements

1. A Modern, Inclusive Playground

A fully ADA-compliant play structure designed for all ages and abilities

Multiple swing types, including toddler, adaptive, and adult swings

An inclusive merry-go-round so all children can play together

Interactive musical elements for creative play

Ground-level play features for wheelchair accessibility

Poured-in-place rubber flooring for safety and mobility

2. Outdoor Restrooms

ADA-compliant facilities for easier access and year-round convenience

3. A Pickleball Court

A fun and fast-growing sport that would bring more recreation opportunities to the park

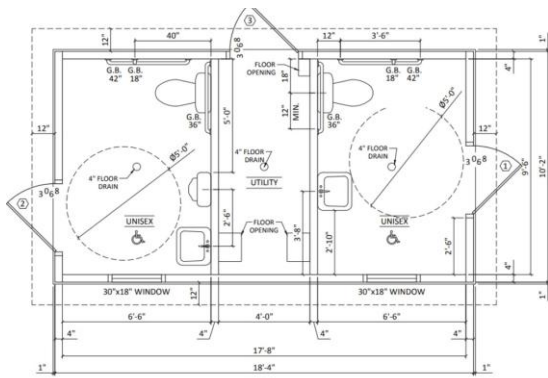
4. A Trail Connection to the Ahnapee State Trail

A safe, scenic walking and biking path linking the park to the Ahnapee Trail

Providing a safer entry point to the park away from busy roads

5. A Little Free Library

A community book-sharing station to promote reading and lifelong learning



Why This Matters

- Encourages Outdoor Activity – Expanding recreation opportunities for all ages
- Improves Safety & Accessibility – Making the park welcoming for everyone
- Creates More Community Spaces – Supporting local events, sports, and gatherings

How You Can Help

✓ **Spread the Word** – Share our vision with friends, neighbors, and local businesses

✓ **Volunteer** – Join us in fundraising efforts or community events

✓ **Donate** – Every contribution, big or small, brings us closer to these much-needed upgrades

We believe this project will bring new life to Robert Baumann Memorial Park, but it will take all of us to make it happen!

For updates, ways to get involved, or to donate, email Erin Fritsch at maplewoodparkproject@gmail.com.

Together, we can build a better park for Maplewood!

CHECK PAYMENT

If sending a check via United States Postal Service, use the following:

Town of Forestville

Robert Baumann Memorial Park Fund

P.O.Box 175

Forestville, Wisconsin 54213

ONLINE PAYMENT

Credit card payments can be made by following this [link](#).