

City of Wautoma Zoning Map

Legend

- FEMA 2013 Floodplain
- Resource Protection Area
- General Agriculture District
- Community Commercial District
- Neighborhood Commercial District
- Service Commercial District
- General Manufacturing District
- Intensive Manufacturing District
- Manufacturing Park District
- Public and Semi-Public District
- Residential Multi-Family District
- ROAD
- Residential Single-Family District
- Residential Two-Family District
- Residential Single-Family District

Scale: 0 250 500 1,000 Feet

Source: Base map data from Waushara County. Zoning information from City of Wautoma - 2017. Fema Floodplain data - 2013.

Prepared: NOVEMBER 2022 BY: East Central Wisconsin Regional Planning Commission (ECWRPC)

City of Wautoma Zoning Map

This map displays the zoning districts for the City of Wautoma, Wisconsin. The districts are color-coded and labeled with codes such as RS-8, RS-12, M-P, C-S, A-G, and others. The map includes major roads like Highway 73, Highway 22, and Highway 152, as well as local streets like N Bridge Ct, S 16th Ave, and E Center St. A legend in the bottom right corner defines the symbols for FEMA 2013 Floodplain, Resource Protection Area, General Agriculture District, Community Commercial District, Neighborhood Commercial District, Service Commercial District, General Manufacturing District, Intensive Manufacturing District, Manufacturing Park District, Public and Semi-Public District, Residential Multi-Family District, Residential Single-Family District, and Road. A scale bar indicates distances up to 1,000 feet, and a north arrow is provided. An inset map in the bottom left corner shows the location of Wautoma within the state of Wisconsin.

Legend

- FEMA 2013 Floodplain
- Resource Protection Area
- General Agriculture District
- Community Commercial District
- Neighborhood Commercial District
- Service Commercial District
- General Manufacturing District
- Intensive Manufacturing District
- Manufacturing Park District
- Public and Semi-Public District
- Residential Multi-Family District
- Residential Single-Family District
- Road

Source: Base map data from Waushara County. Zoning information from City of Wautoma - 2017. FEMA Floodplain data - 2013.

Prepared: November 2022 BY: East Central Wisconsin Regional Planning Commission (ECWRPC)

City of Wautoma Zoning Map

This map displays the zoning districts for the City of Wautoma, Wisconsin. The districts are color-coded and labeled with codes such as RS-8, RS-12, M-P, C-S, A-G, and others. The map includes major roads like Highway 73, Highway 22, and Highway 152, as well as local streets like N Bridge Ct, S 16th Ave, and E Center St. A legend in the bottom right corner defines the symbols for FEMA 2013 Floodplain, Resource Protection Area, General Agriculture District, Community Commercial District, Neighborhood Commercial District, Service Commercial District, General Manufacturing District, Intensive Manufacturing District, Manufacturing Park District, Public and Semi-Public District, Residential Multi-Family District, Residential Single-Family District, and Road. A scale bar indicates distances up to 1,000 feet, and a north arrow is provided. An inset map in the bottom left corner shows the location of Wautoma within the state of Wisconsin.

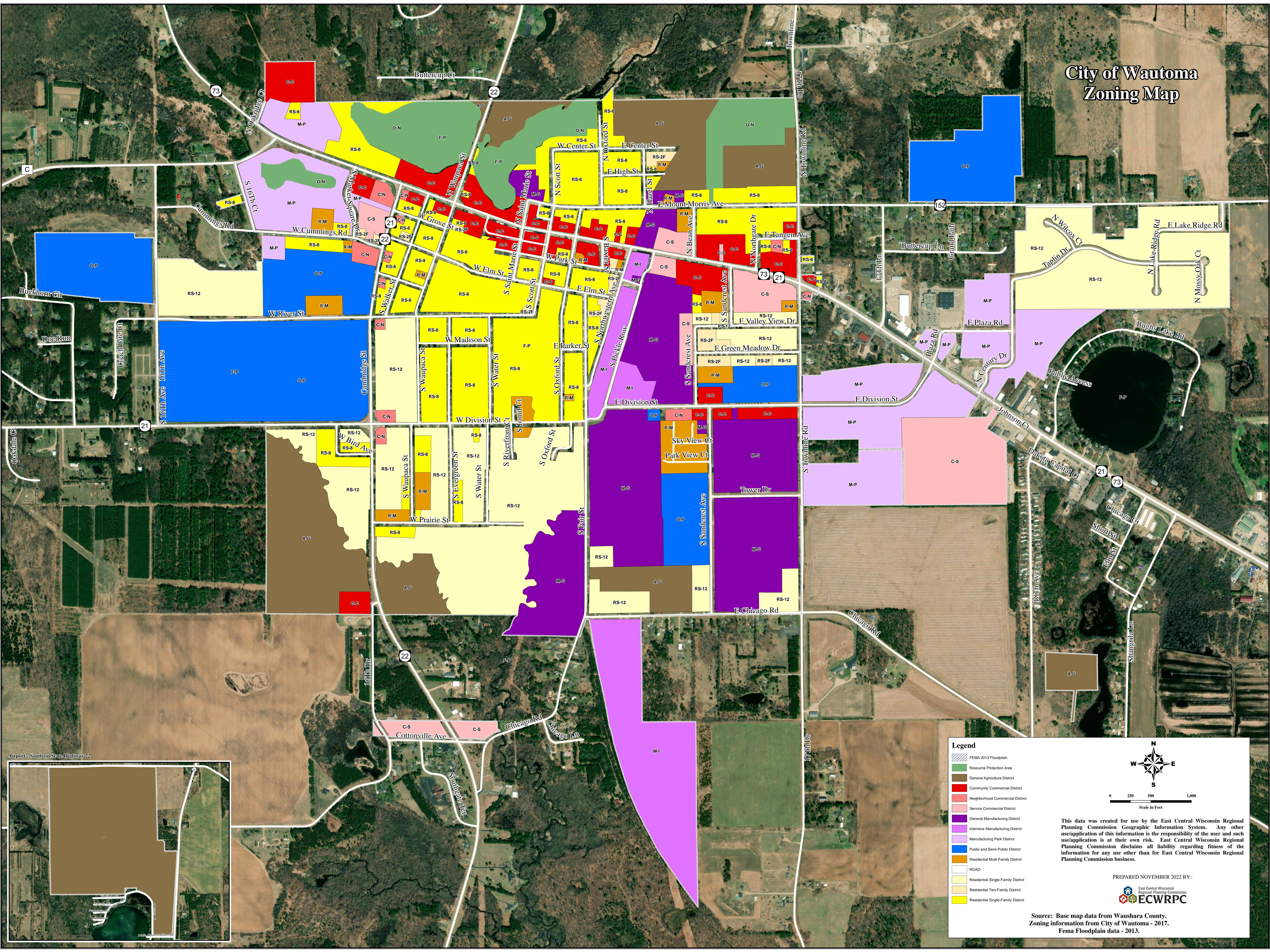
Legend

- FEMA 2013 Floodplain
- Resource Protection Area
- General Agriculture District
- Community Commercial District
- Neighborhood Commercial District
- Service Commercial District
- General Manufacturing District
- Intensive Manufacturing District
- Manufacturing Park District
- Public and Semi-Public District
- Residential Multi-Family District
- Residential Single-Family District
- Road

Scale: 0, 250, 500, 1,000 Feet

Source: Base map data from Waushara County. Zoning information from City of Wautoma - 2017. FEMA Floodplain data - 2013.

Prepared: November 2022 BY: East Central Wisconsin Regional Planning Commission (ECWRPC)



City of Wautoma Zoning Map

Legend

- FEMA 2013 Floodplain
- Resource Protection Area
- General Agriculture District
- Community Commercial District
- Neighborhood Commercial District
- Service Commercial District
- General Manufacturing District
- Intensive Manufacturing District
- Manufacturing Park District
- Public and Semi-Public District
- Residential Multi-Family District
- Residential Single-Family District
- Road

Scale: 0 250 500 1,000 Feet

Source: Base map data from Waushara County.
Zoning information from City of Wautoma - 2017.
FEMA Floodplain data - 2013.