

TOWN of SALTILLO, TENNESSEE

2024

PARKS AND RECREATION SYSTEMWIDE PLAN

Preliminary Draft

This is a draft to be reviewed by the public and discussed at a Public Meeting planned for 3-19-2024, 6 pm, Saltillo City Hall. Format, pictures, content etc. will be finalized after the public input meeting.



Saltillo Parks and Recreation Systemwide Plan Acknowledgements

Board of Mayor and Aldermen

Mayor	Greg Billings
Alderman	Randy Carter
Alderman	Karen Mainard
Alderman	Teresa Morgan
Alderman	Nathan Reeves
Alderman	Carolyn Wood

Park and Recreation Systemwide Plan Focus Group

Angela Billings
Bethan Bowman
Georgia Brewer
Randy Carter
Gail Clark
Geoffrey Clark
Rebecca Dawson
Steve Eason
Jamison Finley
Julie Finley
Lane Finley
Venida Jackson
Karen Mainard
Teresa Morgan
William Robertson
Olga Turnbow
Kim Withers
Carolyn Wood
Steve Wood

Saltillo Parks and Recreation Systemwide Plan

Table of Contents

ACKNOWLEDGEMENTS	2
TABLE OF CONTENTS	3
INTRODUCTION.....	7
MINIMUM COMPONENTS OF A PARKS AND RECREATION SYSTEMWIDE PLAN	9
TENNESSEE STATEWIDE COMPREHENSIVE OUTDOOR RECREATION PLAN.....	10
SCORP.....	
Executive Summary: Tennessee’s 2030 Vision	
Findings	
A Vision for the Future	
EXECUTIVE SUMMARY	14
SALTILLO HISTORY.....	17
COMMUNITY PROFILE DEMOGRAPHICS.....	18
INPUT PROCESS.....	21-30
Introduction	
Parks and Recreation Systemwide Plan Focus Group	2
SWOT ANALYSIS	26
COMMUNITY RECREATIONAL NEEDS ASSESSMENT.....	27-30

PARK EVALUATION AND INVENTORY	31-73
Community Center Park	
Lincoln Park	
Saltillo Landing	
Saltillo Main Street	
 FINDINGS, THEMES, & RECOMMENDATIONS	 74-86
Town of Saltillo Parks and Recreation Advisory Board	
Funding	
Walkable Town, Trails and Greenways	
Saltillo, Town on the River	
Upgrades to Parks and Revisioning	
ADA & Access	
Maintenance	
Strategic Decision Making	
Community Center	
Future Park/Land Acquisitions	
 PARK AND RECREATION PROGRAM OFFERINGS	 87
 SHORT, MID, AND LONG-TERM GOALS.....	 88

Saltillo Parks and Recreation Systemwide Plan

Introduction

Saltillo virtually is a “town on the River”. Situated outside a northern to eastern bend and flow of the Tennessee River, much of what drives the town economically, socially and recreationally originates from the river. In the last 10-15 years, the town has emerged as a preferred retirement area. The town with a population of 423, is constantly looking at ways to maximize opportunities for the city and better serve its residents.

The Saltillo, Tennessee Board of Mayor and Aldermen determined that a comprehensive Parks and Recreation Systemwide Plan would be beneficial to the Town of Saltillo. The development of a systemwide plan would provide leadership the current conditions of park amenities, amenities the citizens would like to see added as well as provide a strategic approach to address further parks and recreation development. To be eligible for grants offered through the Recreation Resources Division of TDEC, applicants must have a current Parks and Recreation Systemwide Plan. Completion of a systemwide plan would qualify the Town of Saltillo to apply for Parks and Recreation grants in 2024 and through 2029, and an update of the plan will allow Saltillo to apply for grants through 2034. The current practice of TDEC/RRD of offering grants for parks and recreation projects on a yearly basis, positions Saltillo to take advantage of every financial opportunity available.

Support and many hours of work by the leadership and citizens has made completion of this document possible and many are listed on the Acknowledgement page. The high level of involvement by the residents of Saltillo ensures the result is a document developed by and for the residents of the Town. The Systemwide Plan for the Town of Saltillo displays a ten-year vision for parks and recreation services as well as a framework and roadmap to accomplish the plan’s objectives. The planning process included an assessment of current facilities and programs as well as future recreational demands of the public. Numerous community input meetings, unique to Saltillo, were conducted as well as interviews and professional evaluation processes to create a document that will be useful daily for the development of leisure services for the Town of Saltillo.

While the Town of Saltillo has enjoyed parks for years, the opportunity to update existing parks and create new opportunities will provide enhanced quality of life for present and future citizens. The purpose of this plan is to give the Town of Saltillo a guide they can use, monitor and update to plan for the future to meet the leisure needs of their citizens.

**TDEC Recreation Resources Division
Parks and Recreation Systemwide Plan Requirements**

Minimum Criteria

Strategic Planning type component including a focus group that represents a cross section of the community. **Pages 21-25.**

A Strength, Weakness, Opportunity, and Threat (S.W.O.T.) Analysis is often included. **Page 26**

Community Recreational Needs Assessment/Survey **Pages 27-30**

Facility inventory with facilities and current conditions included **Pages 31-73**

Parks and Recreation Program offerings list **Page 87**

Short, Mid, and Long-Term Goals **Page 88,**

Public Input on the final draft of the plan to be: **Posted 3/12, 2024, Meeting-3-19-24**

Acceptance of plan by Organization's Governing Board **April 2, 2024**

The Parks and Recreation Systemwide Plan must be created or updated with the criteria above within the last 5 years and it must be accepted by the governing body between May 4, 2019, and May 3, 2024.

SCORP

Tennessee Statewide Comprehensive Outdoor Recreation Plan

The 2030 State Comprehensive Outdoor Recreation Plan outlines the recreation, parks, and conservation priorities for the State of Tennessee for the next 10 years (2020-2030). The main focus of the plan outlines the priorities that fulfill Tennessee's Statewide Comprehensive Outdoor Recreation Plan (SCORP), which will serve as a guide for all public outdoor recreation in urban and rural neighborhoods, cities, and regions for our state. The Statewide Comprehensive Outdoor Recreation Plan is designed to be a framework for recreation planning at all levels of government. Action plans support successful partnerships, meaningful investment in infrastructure, and effective outreach and engagement that ensure an outstanding system of outdoor recreation for Tennesseans on the state, county, and local government level. As the Cumberland City-Dover-Stewart County Parks and Recreation Systemwide Plan was developed, there was an emphasis on aligning with the SCORP since it is designated as the Tennessee State Outdoor Recreation Plan. In addition, the Open Selection Process (OPSP) the Recreation Resources Division uses for scoring Local Park & Recreation Fund (LPRF), Recreational Trails Program (RTP) and the Land and Water Conservation Fund (LWCF) includes a section for SCORP compliance. Executive Summary: Tennessee's 2030 Vision Tennesseans Outdoors: Vision 2030, an update to the 2020 SCORP, will guide Tennessee parks and recreation priorities over the next ten years. The Tennessee State Park System is an important part of Tennessee culture, with an estimated State Parks visitor count of 34.7 million in 2020 alone. The importance of this system is emphasized by the ongoing COVID-19 pandemic, as many other forms of recreation and entertainment were curtailed over the last year. The Tennessee State Park system also plays a large role in the State's economy, with a visitor impact of \$1.8 Billion in 2020. Spending by visitors to the State Parks system supported 13,629 jobs and \$487.6 million in household earnings and contributed \$1 billion to state GDP. The TN 2020, developed in 2010, was built around 10 strategic initiatives with supporting goals designed to address critical needs, the results of which are addressed in following chapters. The 2030 plan was developed in close collaboration with a statewide advisory committee representing various constituencies across the state that provide decision making guidance to local, state, and other outdoor recreation providers. One of the key themes that emerged throughout the planning process was the importance of equity and the need for equal access for all, and these themes were woven throughout every aspect of this plan. As the plan was developed, a series of guiding principles were identified: • Elevate the importance of statewide recreational planning, particularly as it relates to achieving parks and recreation equity and access for all • Identify high priority issues, needs, and investments from the possible opportunities presented over the course of the planning process • Review the

latest plan and make thoughtful determinations on whether to retain and/or modify uncompleted top actions • Develop collaborative relationships and partnerships that extend well into the implementation phase of the planning process • Attempt to quantify the public’s outdoor needs and values to help in making data driven choices regarding prioritization and implementation • Enhance citizen awareness and value of the outdoor resources Tennessee has to offer • Satisfy the National Park Service priorities and meet Land and Water Conservation Fund (LWCF) requirements Findings Each section of this plan focuses on different aspects of outdoor recreation in Tennessee: Outdoor Recreation in Tennessee Today, Outdoor Recreation Demands and Needs, and Outdoor Recreation Challenges and Issues. Summaries of each section and their findings are included below.

Outdoor Recreation in Tennessee Today This section includes an overview of the status of outdoor recreation in Tennessee today; recommendations for an inventory of facilities and activities, findings related to the importance of recreation, including social, health and wellness, economics, and environmental benefits; and context of the plan in terms of the roles of federal, state, local, and private partners in providing outdoor recreation. In early 2021, a Project Charter for the GIS Inventory Project was published. The inventory project would include developing a single comprehensive statewide parks, greenways, and trails inventory for public facilities in Tennessee. A single inventory would greatly benefit state agencies, researchers, non-profits, and the public in a variety of purposes. The inventory will help inform decisions as well as aid in monitoring and evaluating outdoor recreation facilities and activities over time to ensure equal access and investments. A study by the University of Tennessee also included in this section underscores the importance of recreation on the State’s economy. Overall, State Park visitor economic impact to the state totaled \$1.7 billion for the year 2020. Parks also contribute to sales taxes via visitor and employee spending. This section concludes with highlighting the importance of coordination between programs and organizations to support outdoor recreation and increase funding and programming in Tennessee parks.

Outdoor Recreation Demands and Needs This section includes a summary of user survey results and public feedback, trends and barriers of outdoor recreation, and demographic trends. Responses from the user survey and public feedback indicated that respondents felt the following themes were the most important to focus on in the 2030 plan: 1. Connectivity and Access 2. Land Acquisition and Stewardship 3. Plan for Future 4. Resource Management and Protection They also felt that Conservation was the highest priority goal. Additionally, overall findings for trends and barriers of outdoor recreation indicated that Tennesseans do perceive some limitations overall—but not extreme limitations—to their participation in outdoor recreation. Interest in outdoor recreation was the biggest prerequisite for participation, whereas crowding and outdoor bugs/pests were the biggest barriers to outdoor recreation. Last, research indicated that changes in ethnicity and age can have direct effects on shifts in recreational behavior and preferences. Thus, as the state’s

population increases, challenges and opportunities related to outdoor recreation will shift. Summary of Recreation Challenges and Issues This section draws on the findings from the previous sections to identify key challenges and issues to outdoor recreation. The Vision for the Future, summarized below, attempts to address key challenges and issues in planning for the future of outdoor recreation for all Tennesseans. A Vision for the Future The 2030 Plan is guided by four overarching vision themes, each with supporting actions to help achieve the goal articulated by the vision theme. These vision themes were developed through intense collaboration among the members of the Core Executive Team, Tennessee Recreation Advisory Committee (TRAC), and TRAC Sub Committees. They were then presented to the public for review and further vetting, refinement, and prioritization. TDEC and the Department of Health will serve as leads to help achieve these goals.

Advocacy and Education Goal: Allow citizens to understand, appreciate, and have access to the recreation resources available in Tennessee. Provide exposure to the benefits of outdoor recreation and tools to create sustained healthy habits and responsible enjoyment of the outdoors.

Action #1—Identify or create relevant educational resources to share statewide

Action #2—Advocate for physical connectivity and access (to parks, trails, greenways)

Action #3—Create partnerships for distributing educational resources and education: How to get information into the communities—identifying needs, partners, and avenues

Collaboration and Partnerships for Economic Success Goal: Build strategic coalitions to maximize the economic impacts of outdoor recreation and parks in Tennessee.

Action #1—Complete mapping and Inventory of recreational facilities

Action #2—Develop economic impact model / formula

Action #3—Development partnerships

Action #4—Identify communication strategies

10 Conservation Goal: Sustain and grow Tennessee’s outdoor recreation and conservation legacy

Action #1—Develop direct land conservation policies and strategies that address each of the focus areas to ensure equity and inclusion and meet the diverse needs of all Tennesseans

Action #2—Develop a land acquisition and stewardship plan that lays out strategies and actions for current and future public lands for outdoor recreation

Action #3—Develop a land acquisition and stewardship plan that lays out strategies, actions and opportunities for improved access and use of private lands for outdoor recreation

Action #4—Increase funding for land acquisition and resource management

Action #5—Improve long-term capacity and effectiveness of resource management efforts and programs in all public and private conservation agencies

Inclusivity, Diversity, Equity, Access, Affordability (IDEAA) Goal: All Tennesseans will have access to and feel welcome at all local and state recreation facilities in which diversity is reflected in programs, operations, and staffing.

Action #1—Ensure that all parks will be places where all communities can engage with nature in positive ways

Action #2—Encourage the creation of and support for groups promoting outdoor recreation with demographic groups currently underrepresented in park use

Action #3—Ensure that leadership in all levels of public parks and recreation agencies

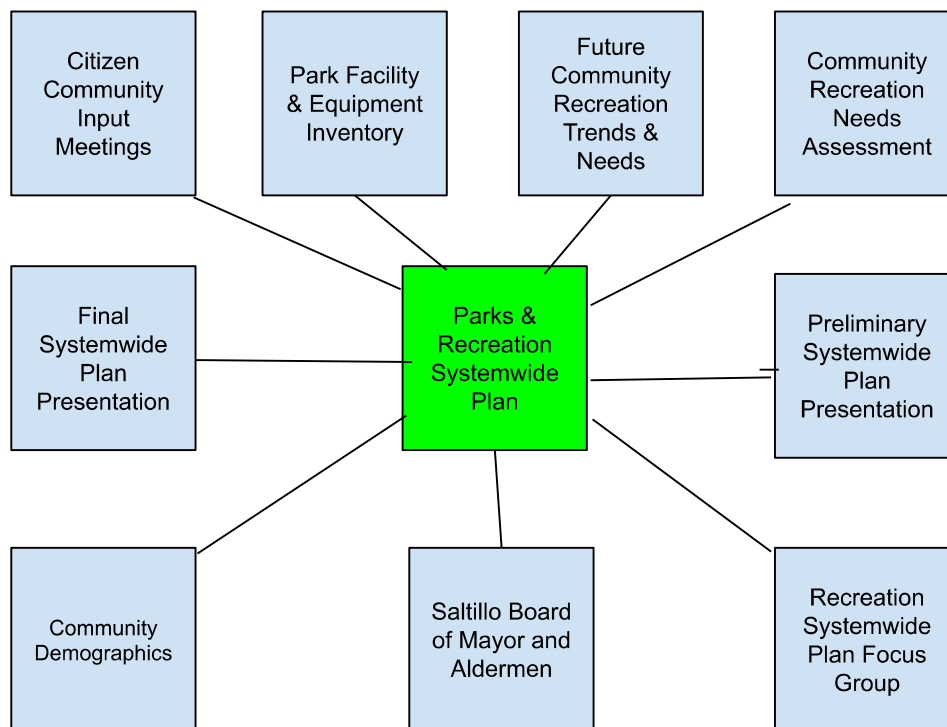
will represent the diversity of Tennessee Action #4—Develop a statewide equity (DEAI) performance measure scale for use across the state as an evaluation tool to understand performance on the issue of equity. This scale will be used to assist agencies in setting goals and providing guidance in planning for sustaining a focus on equity performance.

Executive Summary

The Town of Saltillo was founded in 1822 and incorporated in 1870. Since its beginning the town's location on the Tennessee River has made it a natural location for outdoor recreation. Although parks have been available to the community for years, a comprehensive park and recreation plan has never been developed for the town. The Saltillo Board of Mayor and Aldermen decided to take advantage of grants available by developing a Parks and Recreation Systemwide plan. Once approved, the plan will make Saltillo eligible for several grants which fund a wide variety of recreation facilities.

Developing the Plan

Developing a plan which will meet the Tennessee Department of Environment and Conservation regulations, requires a strategic approach that maximizes citizen input, professional park and recreation knowledge and guidelines to create a plan that can serve as a guide for the community for the next 10 years.



The Saltillo Parks and Recreation Systemwide Plan used a layered approach to develop such a plan for the Town of Saltillo.

Maximizing Input

A multi-phased approach was used to ensure as much community input as possible. A kickoff meeting with the Parks and Recreation Systemwide Plan Focus Group and citizens was held to explain the need and process for the plan. Meetings were held with the Saltillo Board of Mayor and Aldermen as well as the Saltillo coffee club. Community Input meetings were held during the day and evening gathering input from the community as well as developing a SWOT analysis for the plan. A Community Recreational Needs Assessment Survey for citizens was developed, distributed and calculated. All of this citizen input along with the other information gathered for the plan has helped develop a comprehensive park and recreation guide for Saltillo's future.

Discovery

The multi-month input, inspections and evaluations brought to surface many areas the Town of Saltillo can address as they strive to meet the vision they have developed for the future of parks and recreation.

Some of the items discussed further in the plan are:

A **Parks and Recreation Advisory Board** composed of citizens and city leadership.

The board can serve as a continuous communication conduit to and for the citizens to move the action plan forward for parks and recreation. The board can serve as leaders, promoters and enthusiasts as well as volunteers for park activities, programs and events,

Funding and timing will be vital for the successful implementation of the plan. The city is in a position with the approval of this plan to apply for and receive a grant in the 2024 calendar year, There is also state legislation pending that could further advance Saltillo's position in acquiring state and federal funding. Alternative funding avenues are discussed as well.

It is obvious that Saltillo's position on the **Tennessee River** has made a huge impact on the town, long before it was incorporated and still today. As the park plan moves forward it will be important to maximize the river's advantage not only for leisure, but economic stability for the community.

Saltillo is blessed to have several parks in a town of only 3 square miles. However, the parks are in need of much evaluation and action to **upgrade** the fixtures and amenities in the parks to ensure they are safe and accessible to all park-users. A sustainable park **maintenance plan** and **ADA** improvements are a vital component of this plan.

Citizens want the opportunity to participate in local **park activities, programs and events**. While Saltillo is fortunate to host several large annual events, the plan focuses on developing more leisure opportunities for the town and offers frequent activities and programs.

Saltillo has parks located throughout its footprint around the town-center. TDEC has Recreation Trails Program grants available which require only a 20% match and can

fund all aspects of trails, greenways, blueways and other pedestrian conveyances. There is an incredible opportunity to connect parks, the river, the town-center, neighborhoods etc. and create a truly **walkable community** that can enhance the town physically and socially.

Saltillo also needs to work with its citizens to determine future decisions for the **community center** as well as possible **future land acquisition**.

Recommendations

One of TDEC's requirements for a Parks and Recreation Systemwide Plan is a list of park and recreation items ranked by priority and **short-mid-long term** importance. Using all the factors and input outlined in the **Developing the Plan** section, an implementation chart was developed to address the needs and concerns the citizens brought forward during the process. Everything can't be accomplished at once, but by aligning momentum, Saltillo can vastly improve their parks, programs and activities in a short period of time.

Town of Saltillo, Tennessee History

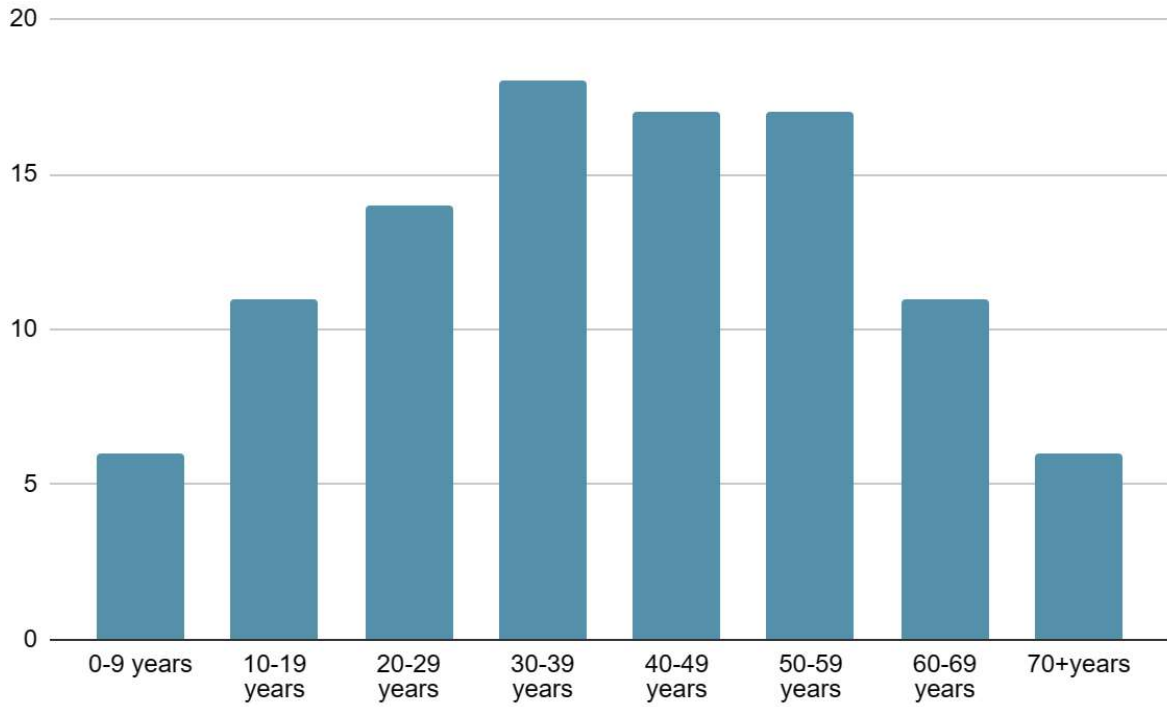
Saltillo was founded by Thomas Shannon in October, 1822. He had left Davidson County, Tennessee and arrived in the area on a keelboat with enough provisions to last one year, two men, Colonel John Holland and Parkerson Mitchell, to assist him, and four black men. The men arrived via the Tennessee River and by boat about half a mile from the river. Shannon's wife and seven children came by land with a drive of forty cattle. This cattle would serve as the starting point for Shannon to raise cattle for income, but the cattle were unable to adapt to the change in their environment and feeding. Within three months of grazing, 39 of the 40 cattle were dead. Shortly after the Shannon family's arrival, Shannon and his sons built a log cabin in 1825, serving as the first house built in Saltillo. Shortly thereafter a store-house was built by Smith Hawkins for dry goods to be distributed, which were sold out within three months. The area where this store-house was built is now called Hawkin's Landing.

More settlers came to the area and another store was built a quarter mile south of the first store by Hawkin's brother, Perry. The first man to be killed in town was Simpson Lee, who was thrown off his horse. Barges began regularly delivering goods and residents would travel as far as the Duck River for a grist mill. In 1842 Thomas Davy purchased the land once owned by Thomas Shannon and it was named Davy's Landing. In 1849 Davy leased the land to Scott Terry, who renamed the area Saltillo.^[7] The town was named Saltillo after Saltillo, Mexico by Terry, who was a veteran of the Mexican–American War. The Saltillo post office was opened in 1850. Saltillo was incorporated in 1870. Wikipedia

Meady White House, 1847



Community Profile Demographics



Saltillo Population by Age Range

2020 US Census

Salttillo 2020 US Census Highlights

- The 2020 US Census for Salttillo was 420, with more recent estimates showing the population has grown slightly to 429.
- The median age in Salttillo is 51.3 years which is about 10% higher than the figure for Hardin County (45.5 years) and approximately 1,3 times the median age for Tennessee (38.9 years), which is a result of being a preferred retirement community.
- Approximately 55% of the population in Salttillo is female, while the remaining 45% are male.
- 51% of the population is 40 years or above and 34% are 50 and above.
- 86% of the Salttillo population identifies as white and 12% as black. Other categories make up the remaining 2%.
- The mean travel time to work is 47.9 minutes, nearly double the figure for Hardin County (25.4 minutes) and Tennessee (25.5 minutes). This is indicative of the rural setting of Salttillo and that residents are willing to drive further to work to live in Salttillo. Most workers (85%) drive alone to their workplaces.
- Salttillo is 3.8 square miles with 136.76 residents per square mile.
- The elevation of Saltillio is 413'.

City/Town Socio-economic Profile: Saltillo

This factsheet provides socio-economic information for your selected community. The table details city/town level data used to calculate a unique Ability to Pay index value and information on average values for Tennessee. Colorized bar charts plot a community's data against the State average. Green indicates a community value that is above the Tennessee average. Red indicates a community that is below the average. Graphs of this information plot the relative trend in population, poverty level, unemployment rate, food stamps and median household income over time. The data is presented for all the 347 cities/towns in Tennessee.

Saltillo Ability to Pay Index 60			
City/Town	Saltillo	Tennessee	Relative Trend
Change in Population (2011-2021)	25.4%	8.9%	Above Average Growth
Poverty Level (2021)	2.6%	10.3%	Lower than State average
Unemployment Rate (2022)	3.7%	3.4%	Somewhat above State average
Food Stamps (2021)	12.5%	12.1%	Above average reliance
Adjusted Median Household Income (2021)	\$59,903	\$63,515	Lower than average MHI
Saltillo	2011	2021	
Population	519	651	
Median Age (years)	61.1	54.5	
Median Household Income	\$48,522	\$59,903	

*This index is issued every 2 years. The 2023 report is due this month and new info will be added if it is received before April 2, 2024.

TN Department of Environment & Conservation
UT Extension, Institute of Agriculture

Saltillo Parks & Recreation Systemwide Plan Input Process

The Tennessee Department of Environment and Conservation considers the input process the most important aspect of a Parks and Recreation Systemwide Plan. An emphasis was made to accumulate as much input as possible through a variety of processes and meetings.

The process began with a kickoff meeting for the plan on August 22, 2023 at the City Park Community Center. This was also the first meeting with the systemwide plan focus group. The steps of the plan were discussed and sample systemwide plans were shown to the group where they could understand the process and their role. The group asked questions and were supportive of the plan process.

The systemwide plan consultant met individually with the Saltillo aldermen on August 22, 2023. The aldermen would like to see improvements and maintenance which would result in more use of the parks. Some of their comments and concerns included:

- New tennis courts
- New and safe playgrounds
- Improved basketball courts
- Existing walking groups need more trails and walkways. Some of these groups walk as many as five days a week. They would like to see pedestrian connectors such as Lincoln Park to town-center and Saltillo Landing to City Park.
- Water access for canoes and kayaks
- A pier or dock on the river that residents could access for fishing, leisure, etc.
- A new park
- Splash pad or pool
- Golf carts residents could access
- Pickle ball
- Dog park (special grants available for dog parks)
- Horse trails
- Marina property for new recreation activities
- Disc Golf
- Improvements to Lincoln Park
- Park restroom improvements
- Block parties in the parks

On Tuesday morning, September 5th, 2023 the systemwide plan consultant met with the Saltillo Women's Coffee Club. There were around 16 people present and there was a great discussion about the present parks and much needed future improvements. When they entertain visitors with children or grandchildren they take them to the parks, but even the children notice the disrepair and condition of the equipment. They would like to go to the park and have equipment and activities that will attract participants.

Some of the items mentioned by the group included:

- Splash Pad*
- Safe playgrounds*
- Ballfield future or improvement
- Goals
- Walkways*
- Connecting different amenities in the city via trails or walkways*
- Outdoor event center for recreation events, concerts, etc.*
- There isn't anything for small children to do at the parks*
- We need exercise classes, exercise activities*
- Art classes
- Disc Golf
- Trail to Saltillo Landing*
- Gym and exercise equipment
- New picnic tables in parks
- Kayak launch
- New public boat/fishing dock*

*items were mentioned multiple times

October 17, 2023 Community Input Meeting

Saltillo, Tennessee

Main Street Stage

12:00 Noon

A Community Input meeting was held in Saltillo, TN at the Main Street Stage on October 17th, 2023 at 12:00. The meeting consisted of about 10 residents from the community, as well as Mayor Billings and Alderman Morgan. The participants were led through a strategic planning component that included a SWOT Analysis (Strength-Weaknesses-Opportunities-Threats) related to parks and recreation in Saltillo.

The participants then identified 13 parks and recreation facilities, programs, activities or opportunities they would like to see made available in Saltillo. Participants then voted for their four top priorities out of the 13 items suggested by the group. The top five items included: A New Floating Dock, New playgrounds at both Saltillo Community Center Park and Lincoln Park, A Full-Service Community Center, Swimming Pool, and Non-Motorized Water Access.

A theme throughout the meeting focused on maximizing the potential of the river and Saltillo Landing, updating the equipment in the parks, . A repeated statement in the meeting was, “we want things to do and places to gather”.

10-17-12:00 pm Community Input Meeting,

Priority	1	2	3	4	Total Total Rank
Walking/Connector Trails	2	4			20
Updated Playgrounds	1	1	3	1	14
Full-Service Community Cntr	2			5	13
Marina/Campground			3	4	10
Improve Dock*	1	1			7
Water/Fishing Access*	1		1		6
Programs & Activities		3	2		5
Splash Pad					
TRIP Director/Park Position					
Pickleball/Senior Activities					
Outdoor Basketball					
Athletic Facilities					
Exercise Trail					

*Similar, could be combined

October 17, 2023 Community Input Meeting

Saltillo, Tennessee

Main Street Stage

6:00 pm

A Community Input meeting was held in Saltillo, TN at the Main Street Stage on October 17th, 2023 at 6pm. The meeting consisted of 11 residents from the community, as well as Mayor Billings. The participants were led through a strategic planning component that included a SWOT Analysis (Strength-Weaknesses-Opportunities-Threats) related to parks and recreation in Saltillo.

The participants identified 16 items they would like to see in Saltillo and distributed votes to 12 items. The top five items were: Floating Dock, New Playgrounds, Community Center, Pool, and Non-motorized launches.

In addition to river access the theme was providing opportunities in the parks for residents of all ages and interests.

10-17- 6 pm Community Input Meeting,

Priority	1	2	3	4	Total
New Floating Dock*	7				28
New Playgrounds	1	5	2		23
Community Center (full-service)	1	3	3		16
Pool	2	1		2	13
Non-Motorized Launches*	1	1	1		9
Repurpose Park Areas			3	2	8
Repurpose Park areas			3	2	8
Smoother Trail		1	1		5
Basketball Court			1	2	4
Greenway/Trails			1	1	3
Disc Golf				2	2
ADA				1	1
Access to Water*				1	1
School Building					
(Redefine, Repurpose, Structure, Use)					
Community Garden					
Golf					
Miniature Golf					

Town of Saltillo Parks and Recreation Systemwide Plan

Combined Community Input Meetings Results

Town of Saltillo Community Input Meetings Combined Results				
Item	Mtg 1	Mtg2	Total	Rank
Updated Playgrounds	14	23	37	1
New Floating Dock	28	7	35	2
Full-Service Comm. Center	12	16	29	3
Walking/G-Way/Connector Trails	20	3	23	4
Pool/Aquatics	0	13	13	5
Marina/Campground	10	0	10	6
Non-Motorized Launches	0	9	9	7
Repurpose Park Areas	0	8	8	8
Water/Fishing/Access	6	1	7	9
Programs and Activities	5	0	5	10
Improve/Smoothen Existing Trail	0	5	5	10
Disc Golf		2	2	12
ADA Improvements			1	13

SWOT Analysis

A Strengths, Weaknesses, Opportunities and Threat Analysis was conducted at both of the input meetings held for the Town of Saltillo Parks and Recreation Systemwide Plan. The SWOT exercise was used to develop a framework for identifying and analyzing Saltillo's strengths, weaknesses, opportunities and threats. The analysis increased awareness of the factors that will accompany decisions as Saltillo moves forward to develop parks and recreation opportunities for their citizens and the surrounding communities. The following items were identified by the participants of the input meetings.

STRENGTHS

Location as a river community
Small Community
Safe Community
Diverse Community
Hardin County Growing 7-9% in next 10 years
Saltillo Growing
Tennessee Riverline

WEAKNESSES

Lack of Street Identification
Distance to Amenities
Lack of Activities for Children to Adults
Empty Storefronts
Aging Park infrastructure, Lack of Preventive Maintenance
Anti-Growth

OPPORTUNITIES

Grants
Word of Mouth Communication
Community Growth
Location to Tennessee River
TVA Presence

THREATS

Funding for Parks
Limited tax base

Community Recreational Needs Assessment

City of Saltillo Parks and Recreation Systemwide Plan Survey Results

A Parks and Recreation Recreational Needs Assessment Survey was distributed in a variety of ways to the citizens of Saltillo. A total of 27 surveys were received. The results and comments have been compiled in the survey below.

As part of the Saltillo Parks and Recreation Systemwide Plan, the City is distributing this survey to collect input from the citizens of Saltillo and the users of park facilities within the city. Please fill out the survey and send or deliver to Saltillo City Hall. Thank you for your participation. Circle one answer for each question, unless other instructions are provided.

1. Where do you live?

- | | |
|----------------------------------|----|
| a. Saltillo | 26 |
| b. Another area in Hardin County | 1 |
| c. Outside of Hardin County | |

2. How would you describe your relationship with Hardin County?

- | | |
|-----------------------|----|
| a. Full-time resident | 25 |
| b. Part-time resident | 1 |
| c. Non-resident | 1 |

3. What race/ethnicity best describes you?

- | | |
|---------------------------|----|
| a. Black/African American | 2 |
| b. White/Caucasian | 25 |
| c. Asian/Pacific Islander | |
| d. Latino/Hispanic | |
| e. Native American | |
| f. Other | |

4. How many people live in your household?

- | | |
|------|----|
| a. 1 | 5 |
| b. 2 | 15 |
| c. 3 | 4 |

- d. 4 2
- e. 5 1
- f. 6
- g. More than 6

5. How satisfied are you with the parks and other recreational facilities in Saltillo?

- a. Highly Satisfied
- b. Satisfied 9
- c. Neutral 9
- d. Unsatisfied 5
- e. Highly Unsatisfied 4

If you are unsatisfied, let us know why below:

1. All of the playground equipment is broken and there isn't enough variety for all ages.
2. Park Equipment is old and not in good shape. Equipment does not meet the needs of the community.
3. There is nothing here that attracts people besides retirees, and that is ok if it is just a retirement community.
4. We need upgrades throughout the park. The equipment is probably not safe for children.
5. Everything is old and falling down.

6. How often do you visit the following places? (select the best option per row)

	Weekly	Monthly	Quarterly	Yearly	Never
Lincoln Park					
Pavilion/Picnic Area	1	3	4	3	16
Playground	3	0	1	2	22
Basketball Court	1	1		2	
City Park / Community Center					
Walking/Running Trails	6	4	4	7	6

Pavilion/Restroom	3	1	3	6	13
Playground	3	3	4	8	9
Swings	2	2	3	5	15
Picnic Area	1	3	6	5	12
Ballfield	2	3	2	6	13
Senior Center	5	1	4	7	10
Saltillo Landing					
Boating	10	2	3	3	8
Fishing	6	5	2	3	10
Picnic Area	11	6	2		7
Walking Trails					

Are there other parks or recreational facilities in the county that you visit? If so, please indicate the place (and the frequency with which you visit it) in the box below.

1. Savannah
2. Shiloh
3. Savannah Waterpark
4. Saltillo Landing

7. Are Saltillo's parks and recreational activities accessible to all, regardless of age, race, religion, national origin, or physical ability?

- a. Highly Accessible 6
- b. Accessible 10
- c. Neutral 8
- d. Inaccessible 2
- e. Highly Inaccessible 1

8. Are you in favor of new or existing financial methods to expand and enhance recreational activities in Saltillo?

- | | |
|--------|----|
| a. Yes | 23 |
| b. No | 4 |

9. How important do you think it is to provide new or improved parks and recreational facilities and activities for our community?

- | | |
|-----------------------|----|
| a. Highly Important | 19 |
| b. Important | 4 |
| c. Neutral | 2 |
| d. Not Important | 1 |
| e. Very Not Important | 1 |

10. If you have any additional thoughts pertaining to Saltillo's parks, recreational facilities, or future programs / activities, please provide them in the box below:

1. Parks need to be updated
2. The Park equipment should include activities for all ages
3. Saltillo should focus its efforts on more important issues-there's not enough kids here to support putting a ton of money into parks. Saltillo Landing is a parking lot-not a park.
4. Need a water park.
5. This program is not worthy of the money. Existing facilities are under utilized. With the exception of the boat ramp area, but, Saltillo doesn't own that. There are other areas more deserving of our tax dollars. Such as additional police officers. Crime prevention, ordinance enforcement, parking for town businesses, and access to water for all households. Drunkenness and criminal behavior run rampant in Saltillo and leadership is worried about parks? It's just nonsense.
6. Need increased handicapped/senior access to all areas. Especially the boat ramp and picnic area.
7. Improved access to seniors.
8. A walking trail would be wonderful. With no sidewalks it is dangerous to walk from Saltillo

City Park to town and to landing. That would help with our parking issues in town. We have walking groups.

Salttillo Parks and Recreation Systemwide Plan

Park Evaluation & Facility Inventory

Salttillo Lincoln Park

Lincoln Park is a 1.9 acre park on Washington Street which includes playground equipment, pavilion and restrooms and a basketball court. As per the park inventory, some equipment needs to be removed, repaired or replaced. The neighborhood park is in a great location close to residents and has great potential.

Lincoln Park Facility Inventory					
	GOOD	FAIR	POOR	ADA ISSUES	COMMENTS
Park Sign			X		Needs Replacement
Parking Areas		X		X	Needs Grading, ADA signage/access
Elevated Playground			X	X	This area needs to be removed/repurposed
Metal Structure/Swings Playground		X		X	Removal or repair, needs surface, access
Wood Playground Structure		X		X	Removal or repair, needs surface, access
Tube Slide		X		X	Needs surface and access
Basketball Court/Goal		X		X	Needs access
Pavilion/Restrooms/ Picnic tables		X		X	ADA Issues
Area Lighting		X			Needs Repair
Lawn Area	X				















Salttillo City Park

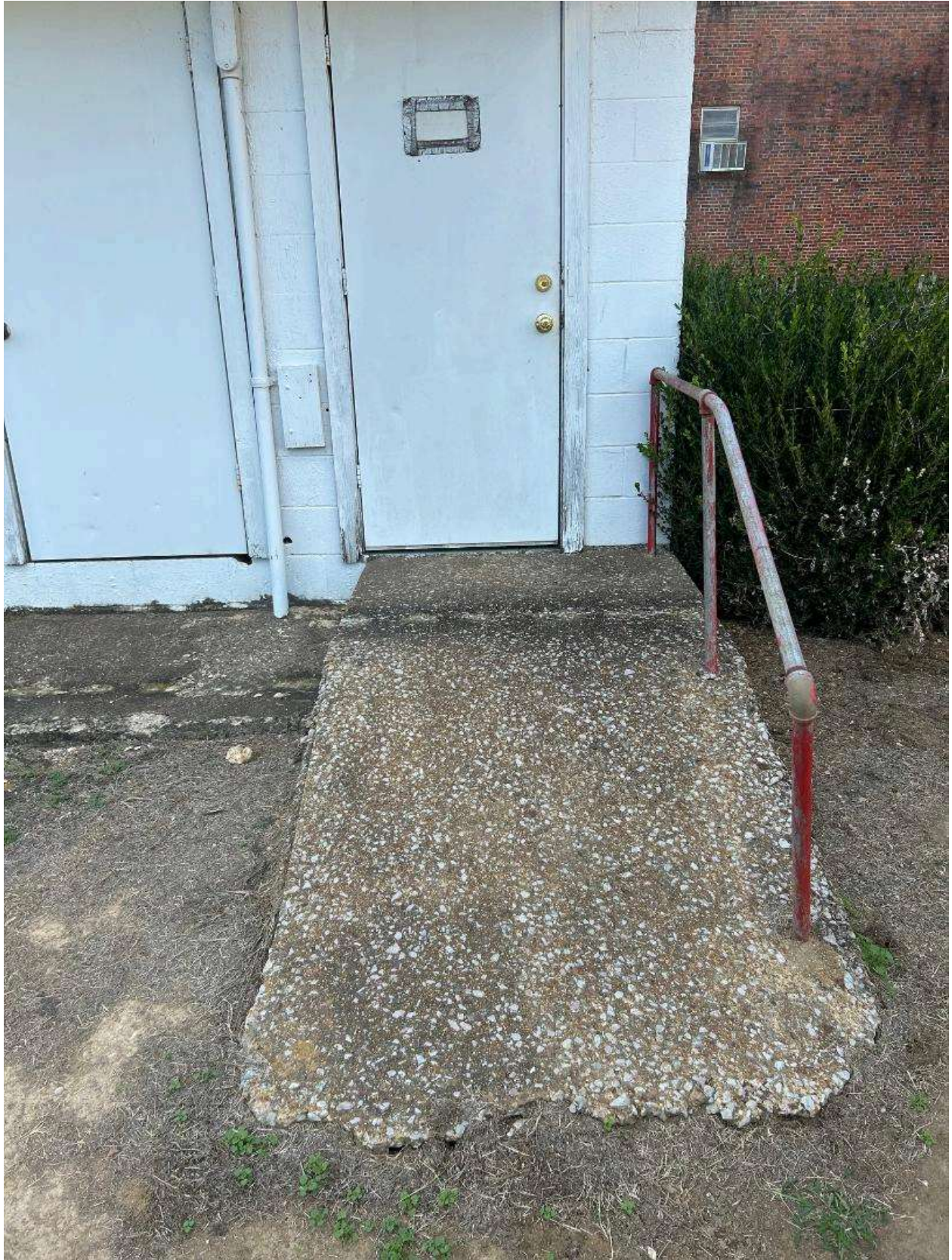
Salttillo City Park is a 5.8 acre park located on Tennessee State Highway 69. True to its name, it has functioned as a city-centered park for years. As detailed below, it includes a wide variety of equipment and facilities, many of which need to be removed, replaced, repaired or addressed in some manner. As per the park survey included in this plan, the park is used often with the walking trail receiving the most use, but some of the equipment is beyond useful service or no longer used. This plan offers a great opportunity for the park to reinvent itself to better serve the current needs of Salttillo's citizens. The old school-community center is also part of the park as is the Salttillo Senior Center and Emergency Fallout Shelter.

Community Center/City Park

Community Center/City Park Facility Inventory					
	GOOD	FAIR	POOR	ADA ISSUES	COMMENTS
Park Sign	X				Not viewable from road.
Parking Areas		X		X	ADA signage/access needs to be designated
Walking Trail	X				
Bleachers		X		X	Ok condition but 5 row does not meet standards
Picnic Tables	X			X	Ok, but no access or ADA tables
Ballfield/Dugouts		X		X	ADA issues
Restrooms		X		X	Needs access
Pavilion/Picnic tables	X			X	ADA Issues, access and no ADA tables
Grill	X			X	

Slide and Platform Playground		X		X	Needs ADA surface and access.
Former Tennis Court			X	X	Removal, Renovation, Repurpose
Swings			X	X	Removal
Ship Playground		X		X	Needs access and surface, repair
Hardin County Cannery	X				
Community Center, Senior Center, Shelter		X		X	ADA Issues, future use issues



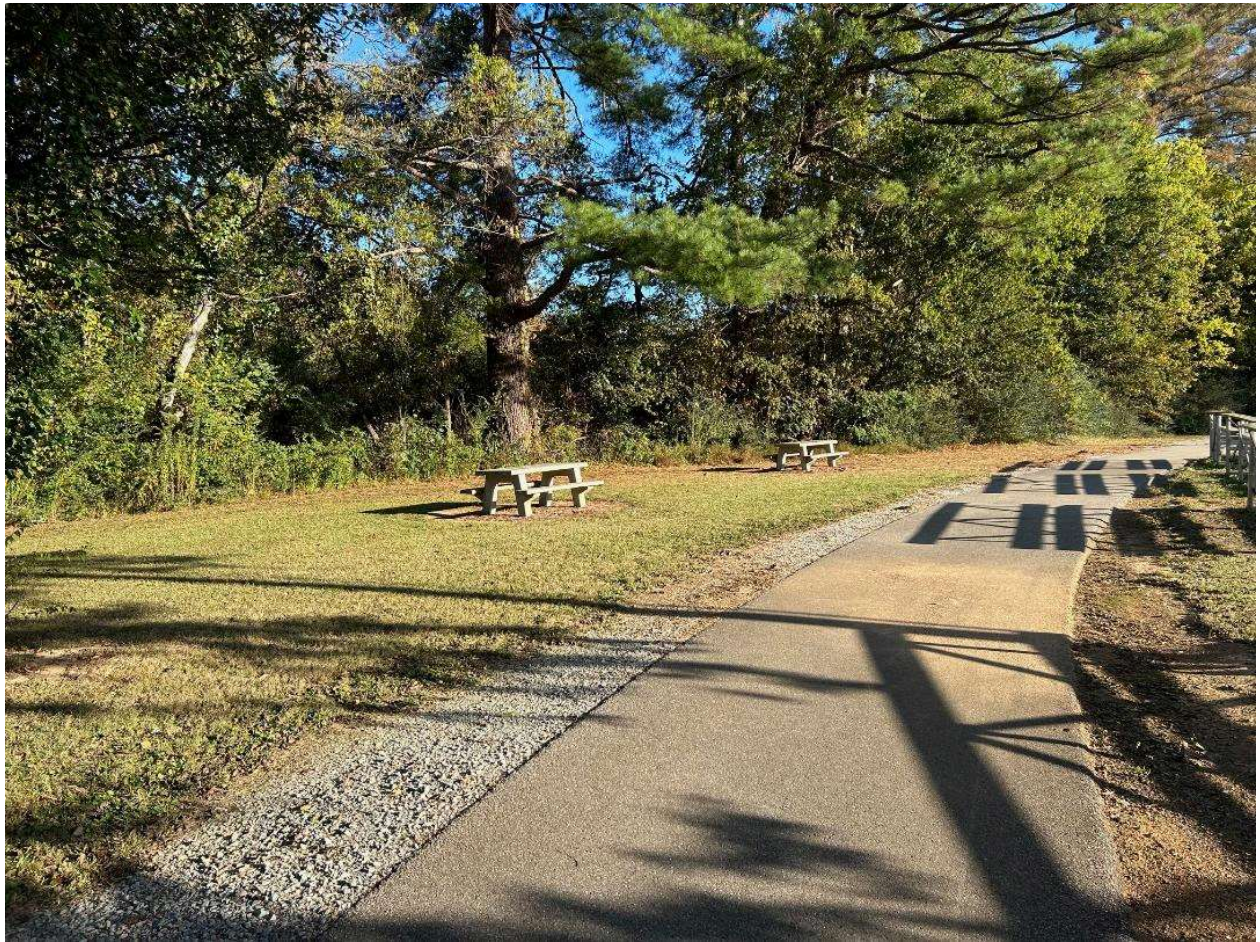


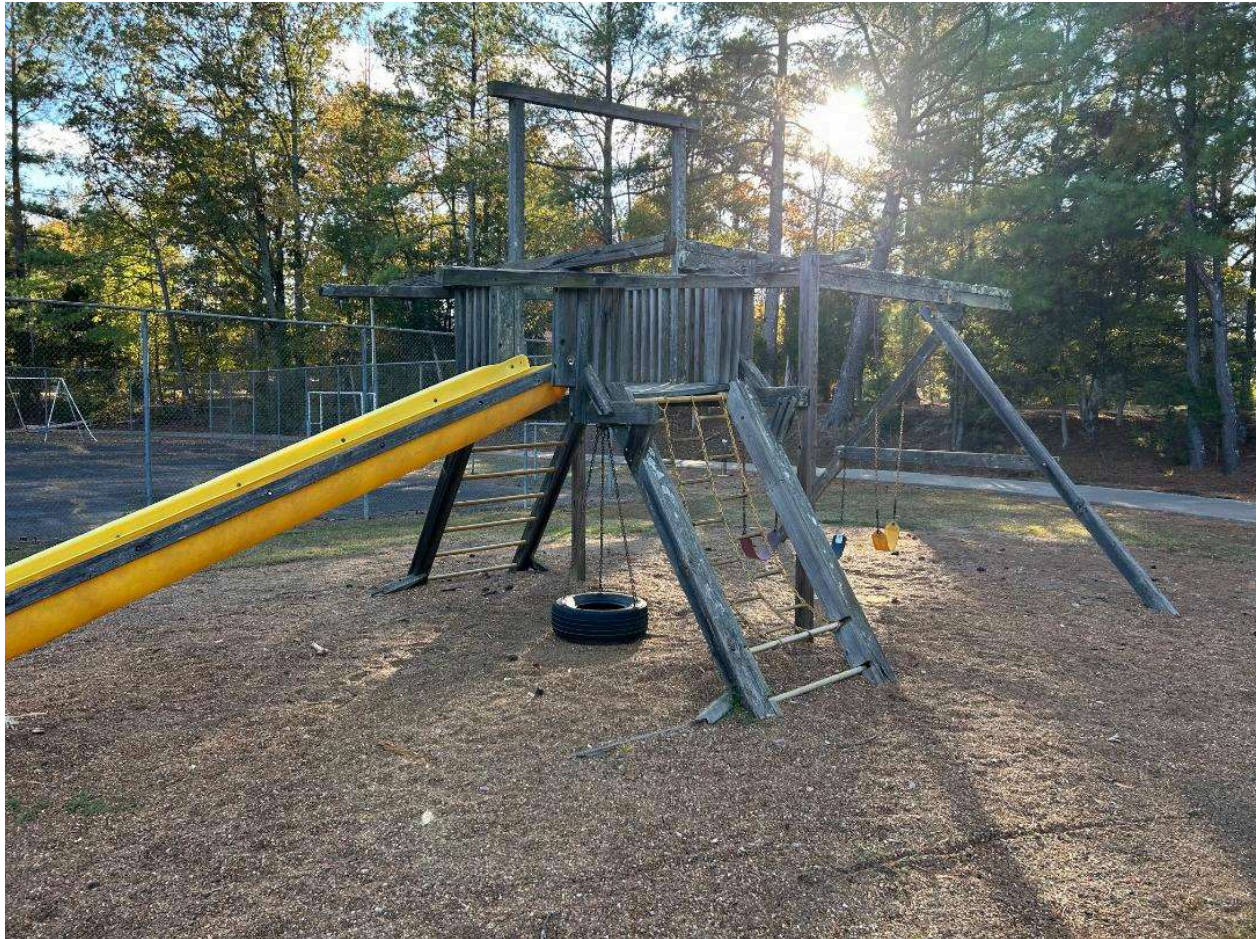






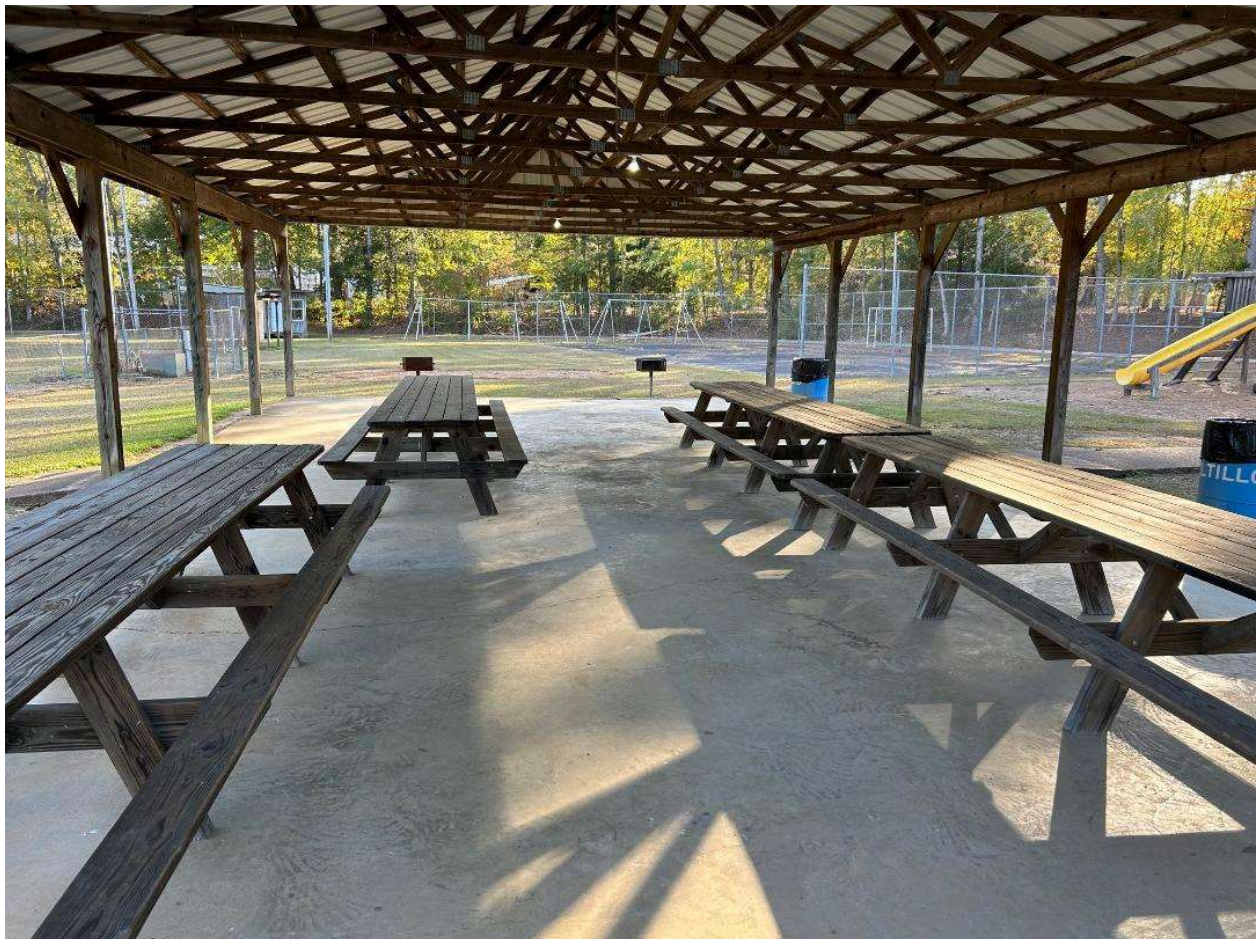




























Salttillo Landing

Salttillo Landing is owned by the State of Tennessee Wildlife Resources Agency and is located at the eastern end of Main Street. The area is 2.55 acres and the city is presently in the process of developing an agreement-lease that would allow the city to apply for grants to improve the park. As per the park survey, the park is used often and citizens would like to see more access.

Salttillo Landing Facility Inventory					
	GOOD	FAIR	POOR	ADA ISSUE	COMMENTS
BOAT RAMP	X				
BOAT DOCK	X			X	
PARKING AREA	X			X	
PICNIC TABLES	X			X	

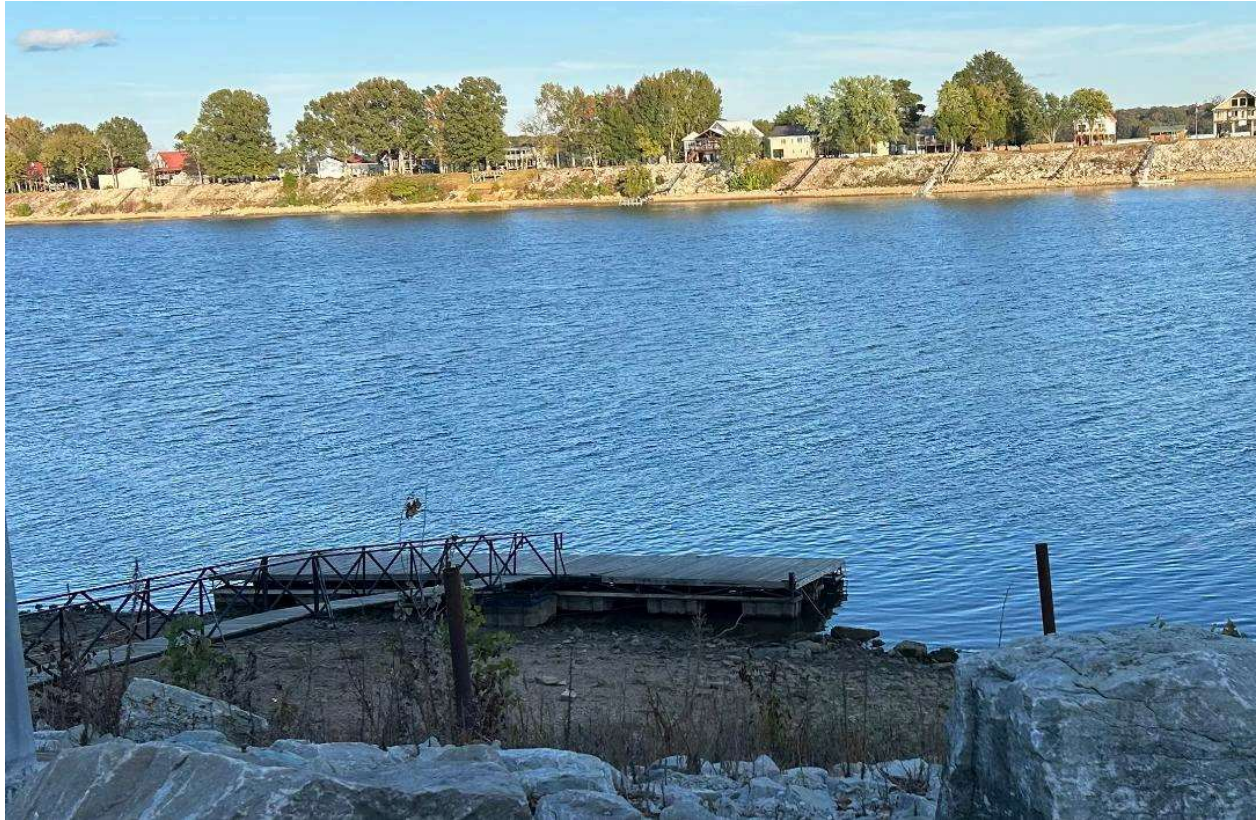














Saltillo Main Street Stage and Farmers Market

This area is located in the middle of the Saltillo business district and is a great location for festivals, activities and events. The area includes a Farmers Market, Main Street Stage and a Trolley Stop.

SALTILLO MAIN STREET					
	GOOD	FAIR	POOR	ADA ISSUE	COMMENTS
STAGE AREA	X			X	
PLANTERS	X				
PARKING AREA	X			X	
fARMERS MARKET	X				





Findings, Themes and Recommendations

Town of Saltillo Parks and Recreation Advisory Board

The Town of Saltillo Parks and Recreation Systemwide Plan details many ideas to improve leisure services for the Town of Saltillo and the surrounding area. Saltillo's location on the Tennessee River, north of Pickwick Lake and south of Kentucky lake make it an attraction for those passing through on the river or by road will fuel growth to the area. One of the challenges of small towns like Saltillo, is the small city staff to move the details of the plan forward in the present and future in a sustainable manner. An Advisory Park and Recreation Board or Committee appointed by the BMA could serve as a consistent catalyst to implement the plan. There are hundreds of park boards and committees in Tennessee which have proved to be successful and invaluable for their Communities.

Park Boards can be as small as five or seven members or larger and are allowed as per T.C.A. 11-24-05. The boards usually have staggered, rotating terms and work closely under the direction of the BMA. Most park and recreation boards have a designated alderman as a voting or advisory member of the board. TDEC-RRD offers park board training through their PARTAS consultants.

A sample of responsibilities of a Parks and Recreation Board in Saltillo could include, but not be limited to:

- Development of Rules and Policies to be submitted to and approved by the BMA.
- Develop an Annual Report of the Status of Parks and Recreation for Saltillo.
- Serve as or recruit Park Ambassadors to assist with parks and programs.
- Develop and assist in implementing Special Events, Activities, Programs and activities in the parks and facilities.
- Develop an adoption program to pay for selected items to enhance and improve parks.
- Recruit and attract Park Grants, Sponsors for Special Events, Activities, Programs and Events in the parks.
- Continually maintain, monitor and update the 2024 Parks and recreation Systemwide plan.
- Sponsor Park Improvement days and activities.
- Serve as a conduit to the community to continue and ensure the parks serve the needs of the citizens and the community.
- Serve as ambassadors of parks in Saltillo and promote park events and activities through the city website, Facebook or other public communication venues.

Funding

Funding for Parks and Facilities, Programs, Activities and Maintenance is always a challenge for communities. There always exists a constant competition for dollars within a government entity. However, for a very small town such as Saltillo, the challenge to provide dollars for all aspects of government is magnified. The result is usually underfunded and poorly maintained parks which are not providing sufficient leisure services for their community. Funding is the lifeline which can prove to be the lifeblood of a successful plan or the deterrent to reaching the goals developed by the community. These facts make Funding one of the most important aspects of a successful parks and recreation department and as well as being able to implement components of the Parks and Recreation Systemwide Plan. For that reason, a consistent, innovative effort and approach must be sustained to continually leverage and advance funding for parks facilities and for the Town of Saltillo.

- **Grants**

The Town of Saltillo, the Park Board (if established) and other town supporters should constantly be looking for grants and dollars available to the town for parks and recreation facilities, programs and activities. The Town should continue their relationship with the Southwest Development District, TDEC RRD PARTAS Consultant Andy Baker, Hardin County Chamber of Commerce, Economic Development partners and others to identify, leverage, and optimize grant opportunities. There can be opportunities where the value of one grant can serve as the match of another, especially when partnering private or federal dollars with state dollars.

TDEC-RRD alone has 4 annual or bi-annual grants, LWCF, LPRF, RTP and the TRIP grant. The Town should be as aggressive as possible in applying for their selected grant using the Town of Saltillo Parks and Recreation Systemwide Plan as a guide and support.

Blue Cross Blue Shield grants are being received by the communities across the state as they are building outstanding playgrounds and splash pads.

The Center for Disease Control issues Obesity Grants through the University of Tennessee Extension service. Saltillo should keep in touch with UT to determine if Hardin County is an eligible county. Hardeman County has been a recipient of numerous Obesity Grants, and currently, Decatur, Henderson, Crockett and Haywood are West Tennessee counties receiving Obesity Grants.

If the Town of Saltillo Parks and Recreation Board is established, it should have their TDEC-RRD-PARTAS consultant meet with them at least annually to discuss grant opportunities, as well as numerous other parks and recreation subjects.

- **Local Park and Recreation Fund Grant Pending Legislation**

Presently, it is difficult for small towns to match the mandated 50% of Local Park and Recreation Fund. There is a bill introduced in the 2024 legislative session

which would allow counties and cities in distressed counties to only be responsible for a match of 10% of the total grant project for Local Park and Recreation Fund Grants. While the bill has not passed through the legislative process at this time, the fact that the legislature realizes the 50% match is a challenge for small and rural communities across Tennessee is a huge encouragement for the Town Of Saltillo. While Hardin County is not presently a distressed County, it has been recently and the legislature could amend the bill, if approved in the future. There is also an amendment to the bill that would use the present TDEC Affordability to Pay Index that is used with the department's State Revolving Loan Fund. Saltillo presently has an API of 60, Hardin County, 30 and Savannah, 10. This bill is being legislated now so the city should monitor the movement. This section will be updated before the plan's final approval.

City/Town Socio-economic Profile: Saltillo

This factsheet provides socio-economic information for your selected community. The table details city/town level data used to calculate a unique Ability to Pay index value and information on average values for Tennessee. Colorized bar charts plot a community's data against the State average. Green indicates a community value that is above the Tennessee average. Red indicates a community that is below the average. Graphs of this information plot the relative trend in population, poverty level, unemployment rate, food stamps and median household income over time. The data is presented for all the 347 cities/towns in Tennessee.

Saltillo Ability to Pay Index 60			
City/Town	Saltillo	Tennessee	Relative Trend
Change in Population (2011-2021)	25.4%	8.9%	Above Average Growth
Poverty Level (2021)	2.6%	10.3%	Lower than State average
Unemployment Rate (2022)	3.7%	3.4%	Somewhat above State average
Food Stamps (2021)	12.5%	12.1%	Above average reliance
Adjusted Median Household Income (2021)	\$59,903	\$63,515	Lower than average MHI
Saltillo Demographics Over Time			
Saltillo	2011	2021	
Population	519	651	
Median Age (years)	61.1	54.5	
Median Household Income	\$48,522	\$59,903	

*This index is issued every 2 years. The 2023 report is due this month and new info will be added.

TN Department of Environment & Conservation
UT Extension, Institute of Agriculture

Parks and Recreation Wish List

Developing and maintaining parks is a challenge for communities all across the nation. Many have developed a “shopping list”, “wish list”, “support our parks list” to develop a mechanism for the private sector to help purchase items needed in their parks. The City and/or Parks and Recreation Board can develop a list of items needed at the parks.

This can be park benches, garbage cans, water fountains, most any amenities needed in Saltillo Parks. A list should be made of professional items selected by the city with the cost of each item. Individuals, organizations, churches, businesses, etc, can make a donation (tax deductible) to the city for the item they choose to sponsor. The city purchases and installs the item, and some even put a small plate designating the name of the donor. It is important for the city to choose the items to ensure quality and consistency. Some items may be larger. Some departments have a list of items supporters can purchase for parks through Amazon.

All across Tennessee, there are Kiwanis Gazebos, Rotary Park, etc. where organizations, churches, businesses, etc. sponsor an item in the park, or even develop and maintain a park at their expense, such as Rotary Park in Erin, TN.



Walkable Town, Trails and Greenways

Throughout the Town of Saltillo Parks and Recreation Systemwide Plan input process, facilities for walking, running, and biking were mentioned often. Saltillo is fortunate to have a small walking loop around Saltillo City Park. However, in many cases, citizens have to drive to the park to walk. Walkable cities is a term that is used often across the country and cities are working to create connectivity throughout their footprint to connect residents to parks, other neighborhoods, schools, churches, retail, restaurants, etc. It is a popular concept that would certainly work in a town of only 3 square miles.

- Connecting Saltillo Landing, City Park and Lincoln Park to downtown Saltillo was mentioned often in the Systemwide Plan input process. The walkable path conduit of these parks with downtown would connect many residents to city destinations and make much of Saltillo a walkable friendly community. The town and the Parks and Recreation should make trails a priority as they move forward with grants and development. The Town could work towards applying for a Recreation Trails Grant, as soon as 2025 to fund the first phase of a trails plan, which could include connecting downtown with Saltillo Landing. RTP grants only require a 20% match from applicants.

Connections many times take innovative thinking, easements and even leases, the Town should be creative when planning for these connectors. When driving through towns, it is amazing how much trails, greenways and blueways are being used, not only to connect parks, but subdivisions, schools, churches, retail, etc..

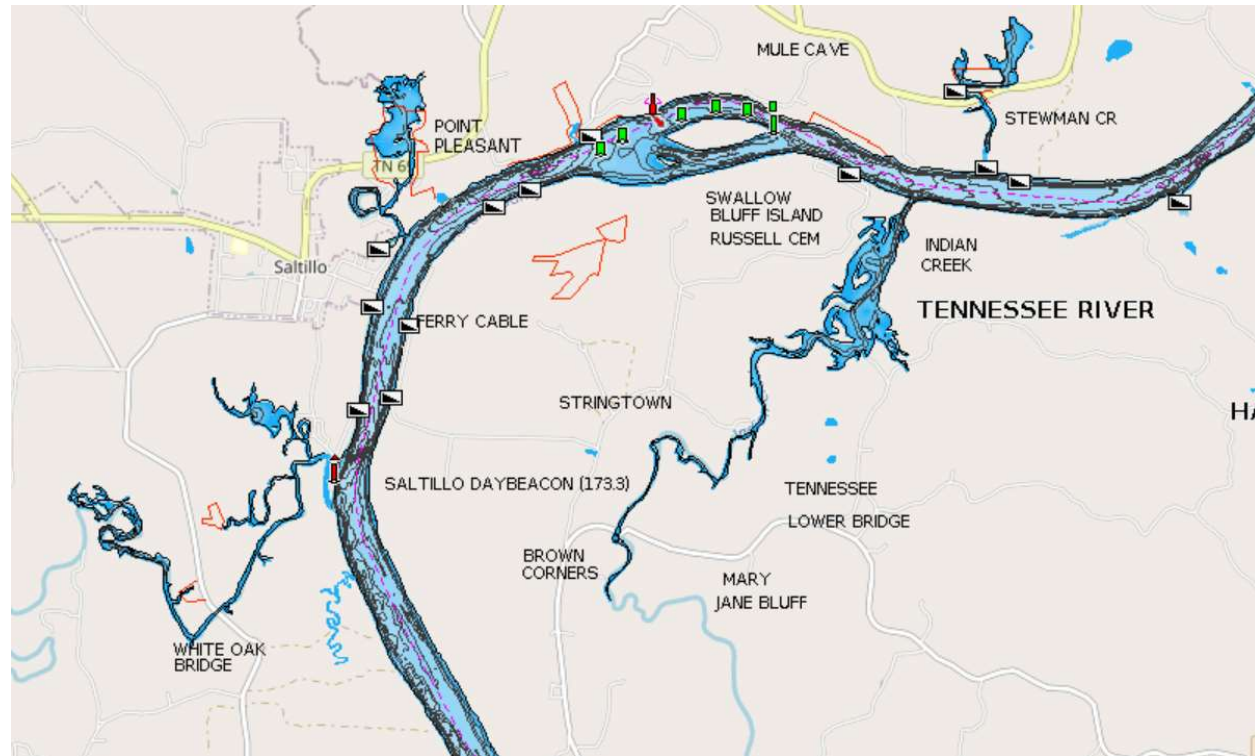
Saltillo, Town on the River

Saltillo IS a town on the Tennessee River. The area was originally founded by Thomas Shannon, who arrived in the area on a Keelboat in 1822 and due to its strategic location, a Smith Hawkins store-house was built to distribute dry goods to the area. Since that time, Saltillo has been affected by the river and it continues to be an economic and social driver for the city and region. The Tennessee Riverline encourages use of the river and Saltillo Landing, provides access to the river for a large area of West Tennessee, as well as river users from Mississippi and Arkansas. The Town of Saltillo has developed relationships with the Tennessee Riverline, Tennessee Valley Authority, Tennessee Valley Authority and other organizations to leverage relationships

that will be beneficial to the Town of Saltillo, the Tennessee River and the organizations. Saltillo should continue to build these partnerships as well as showcase the river to promote economic development and the town. The river should always be a focus as Saltillo makes decisions for parks, greenways, festivals, programs and activities. Throughout the Saltillo Parks and Recreation Systemwide Plan, residents emphasized better access to the river, especially those without boats. Floating docks, paddle launch access and other venues should continue to be considered and promoted.



- Tennessee River Line Map



Upgrade to Parks and Revisioning

A constant theme throughout the Town of Saltillo Parks and Recreation Systemwide Plan input process, was a need to upgrade all of the parks in the Town of Saltillo. Residents feel the facilities and activities are outdated and beyond their useful purpose. Many of the present facilities are not used any longer, and the areas should possibly be repurposed. The Parks and Recreation Survey Facility Use Report supported the meetings input by showing very little use of many areas.

- The Facility Inventory process of the systemwide plan shows many of the facilities and activities at the park are below present standards, lacking access and far beyond their useful purpose. Many of these items should be removed and new items should be provided.
- The ballfield area of City Park is not used on a regular basis. The grassy area is a perfect setting for outdoor events and could be further enhanced with electrical infrastructure to support events, festivals and concerts and possibly a stage or portable stage as well.
- If established, the Parks and Recreation Board, using information in the TSSP and by consulting with their PARTAS representative, could work with the Saltillo BMA to identify a new vision for the unused park areas and facilities. Emphasis

can be made towards identifying areas of need from the TSSP and repurposing and revisioning these under-used areas with items supported by the communities. Saltillo has adequate park space for its present residents, the space just needs to be designed to meet the present leisure needs of the community.

- Remodel restrooms in City Park and Lincoln Park and bring them to ADA standards.
- A feature many parks across the nation are now offering is wifi. This allows park visitors taking a break to use their electronic devices or just use a park bench in a beautiful park setting to catch up on items or business.

ADA & Access

The Americans with Disabilities Act of 1990 (ADA), is a civil rights law that prohibits discrimination based on disability. It affords similar protections against discrimination to Americans with disabilities as the Civil Rights Act of 1964, which made discrimination on race, religion or sex, national origin, and other characteristics illegal.

Many of the facilities in Saltillo's parks were built long before 1990 ADA Law. Cities are now required to have a plan to address the ADA issues within their corporate limits. The vast majority of the facilities in the parks do not meet ADA standards and citizens echoed this need throughout the input process. Saltillo should continue to make all park facilities and activities accessible. All grant projects, whether Federal or State, require the construction of ADA accessible facilities, components, access, and parking, so grant projects will assist in addressing the ADA issues in Saltillo's parks. RRD has trained ADA staff which can assist the town in identifying ADA issues and the best way to meet ADA compliance, so they should be used as a free resource.

Maintenance

The best park and recreation facilities and areas can quickly become unusable, unsafe and unused without proper maintenance. Regardless of the size of a city, standard park maintenance is imperative, and all government entities with parks should develop a park maintenance plan. Not only does a maintenance plan provide safe and clean areas and parks, it also helps prevent injuries and accidents in the parks.

- All Local Park and Recreation Program (LPRP) grant applications now require applicants to have an approved maintenance plan for their parks. Your PARTAS representative can provide you information where city employees, a park board

or committee can develop a maintenance plan designed for Saltillo and meet the grant requirements..

- The RRD Division of TDEC requires a Post Completion Inspection of all grant projects every five years to ensure grant facilities are maintained at an adequate level.
- Park Cleanup Days
Many Communities have spring and fall community cleanup days. This is another program that can be led and promoted by the Park and Recreation Advisory Board. Citizens join city staff to use a few organized hours to clean-up and fix-up city parks. Usually refreshments are provided and volunteers feel like the parks truly are theirs to care for and promote. It can also serve as a project day to plant trees, support wildlife by planting butterfly plants, building bee boxes, bird houses or bat houses, clean up waterways, or build a community garden in the raised area at Lincoln Park! Many communities use cleanup days with great success.

Programs, Special Events, Activities

Saltillo presently hosts an annual River Day Festival, Tennessee Poker Run and a Primitive Arts Heritage Festival each year drawing thousands of people from other states and the region. The Town of Saltillo Systemwide Plan input spoke loudly that the citizens enjoy the present programs and activities and would like to see other opportunities provided throughout the year, not only events, but regular activities. These groups can be organized by the city, park and recreation board, volunteers or a combination of these. Some ideas would include:

- Walking Clubs
Walking groups can be scheduled at City Park and set during the week and times and days can vary to accommodate participants schedules. This activity can be free and advertised through the city. Walking clubs are a popular activity for all ages, but especially in communities with a senior citizen population like saltillo.
- Holiday/Seasonal Activities
Events can be focused around holidays such as easter egg hunts, halloween, July 4th, etc. The city can partner with groups, churches, volunteers and sponsors to provide these opportunities for the community.
- Fitness and Exercise Classes
The city can organize a variety of fitness classes by contracting with a nearby fitness instructor. Usual arrangements include the instructor retaining a percentage of the registration fee and the city providing the venue. Many times, these activities are held at outdoor venues such as parks, parking lots, etc. The auditorium in the community center could be used as well.
- Other Program Opportunities

All types of arts, craft, painting, floral arrangements, bow making, etc can be offered by contracting with an instructor. The city, parks board, etc. can measure specific interests of the residents and determine instructors available in the area.

River Festival, Parade or other event PICTURE inserted here

Strategic Decision Making

As the city moves forward with implementation of the Town of Saltillo Parks and Recreation Systemwide Plan, momentum will follow and interest will grow. It will provide the city an opportunity to build on the momentum and implement many of the items identified in the plan. Working with a park and recreation board, the city can fine tune the short-mid-long term goals of the plan to identify possible grants, sponsors, etc to identify funding and timing of each project development. Taking advantage of every opportunity will be important to the success of parks and recreation moving forward.

Community Center

One item the city needs to look at short and long term, is the community center. An assessment needs to be made of the building to determine deferred maintenance and bringing it to ADA and other standards. Programming currently takes place at the facility in the gymnasium, senior center and auditorium. While many of the program items listed in the Town of Saltillo Parks and Recreation Systemwide plan could be housed in an updated facility, operation, maintenance and staff expense would be very challenging for a city the size of Saltillo. Grant funds are available to refurbish a facility such as the community center, or, if is determined it would be better to demolish the building, grants funds are available as well, as long as the remaining use is used for parks and recreation purposes.

This is not a decision to be taken lightly, but should garner study and evaluation to determine the best plan moving forward,

Community Center PICTURE inserted here

Future Park-Land Acquisitions

The City of Saltillo should always be open to opportunities to purchase new land to expand their park footprint to fulfill the Town of Saltillo Parks and Recreation Plan but also to take advantage of opportunities that would enhance the quality of life for its residents. Former rail lines, abandoned factories and buildings, vacant pieces of land, etc are a few of the items that can be reinvented for successful park projects.

- One such facility for Saltillo could be the former marina area. Its location to the city and its access to the Tennessee River makes it a very unique property that has numerous recreational possibilities.
- Saltillo Landing features some water access at this time but has unlimited possibilities for pedestrian, non-motorized watercraft launching, floating fishing dock, small pavilions, landscaped areas, even restrooms and utilities. The City is already taking steps to secure the use of Saltillo through an agreement that would allow them to acquire state grants for possible projects.
- There are also former easements in the city that could be advantageous as well. These are just two examples of possible land acquisitions, but the city should always be aware of land opportunities. RRD grants are available for land acquisition.



Google Maps

[Town of Saltillo Parks and Recreation Programs Offerings List](#)

Saltillo Senior Citizen Center Programs

River Day Festival

Tennessee River Poker Run and Primitive Arts Heritage Festival



Town of Saltillo Parks and Recreation Systemwide Plan Short-Mid-Long Range Goals and Importance Priorities

As a TDEC requirement for Park and Recreation Systemwide Plans, a diagram must be included that displays short-mid-long terms goals as well as priorities. The chart below was compiled from all input received through input meetings, surveys, as well as facility inventory and overall evaluation of the parks. This is a guide, but funding opportunities, land availability etc. can impact when these items are developed. Low hanging-low cost items may be able to be completed before scheduled.

	Highest Priorities	Priorities	Important
Short Term 1-3 Years	Updated Playgrounds New Floating Dock Walking Connector Trails ADA Improvements	Non-Motorized Launches City, Saltillo Landing & Lincoln Park Improvements ADA Improvements	Water-Fishing Access Programs-Activities Community Center Decision ADA Improvements
Mid Term 3-5 Years	Walking Connector Trails, ADA Improvements	Marina-Campground Property Acquisition City, Saltillo Landing & Lincoln Park Improvements Park Amenities Exercise Eq, Pickle-Ball, Equipment ADA Improvements	Water-Fishing Access Programs-Activities Improve Trails Community Center Decision ADA Improvements
Long Term 5-10 Years	Full-Service Community Center Walking Connector Trails ADA Improvements	Aquatics-Splash Pad-Pool City, Saltillo Landing & Lincoln Park Improvements Park Amenities Exercise Eq, Pickle-Ball, Equipment ADA Improvements	Disc Golf Improve Trails Community Center Decision ADA Improvements

