

# City of Mineral Point ATV/UTV Route Rules

Routes are for ATV/UTV traffic only (off road motorcycles, mini bikes, dune buggies, go carts etc are prohibited).

**Operation.** ATV/UTV operation on the routes shall be in accordance with the provisions of the Wisconsin State Statutes, the Wisconsin Administrative Code and all other applicable ordinances, as the same may be amended from time to time.

City streets are open unless posted.

Operation on city streets and parking lots only. Travel on sidewalks, pedestrian ways or in parks is prohibited.

**Speed Limit.** As posted on the street you are operating on.

Routes closed 11 pm to 6 am.

Driver must be at least 16 years old and have a valid motor vehicle driver's license.

**Open Intoxicants.** No person may possess on his or her person or in or on an ATV or UTV upon any route, any bottle or receptacle containing alcohol beverages if the bottle or receptacle has been opened, the seal has been broken or the contents of the bottle or receptacle have been partially removed or released.

**Insurance Required.** Operators must carry liability insurance.

Posted/prohibited streets cannot be crossed.



## **PROHIBITED ATV/UTV TRAFFIC**

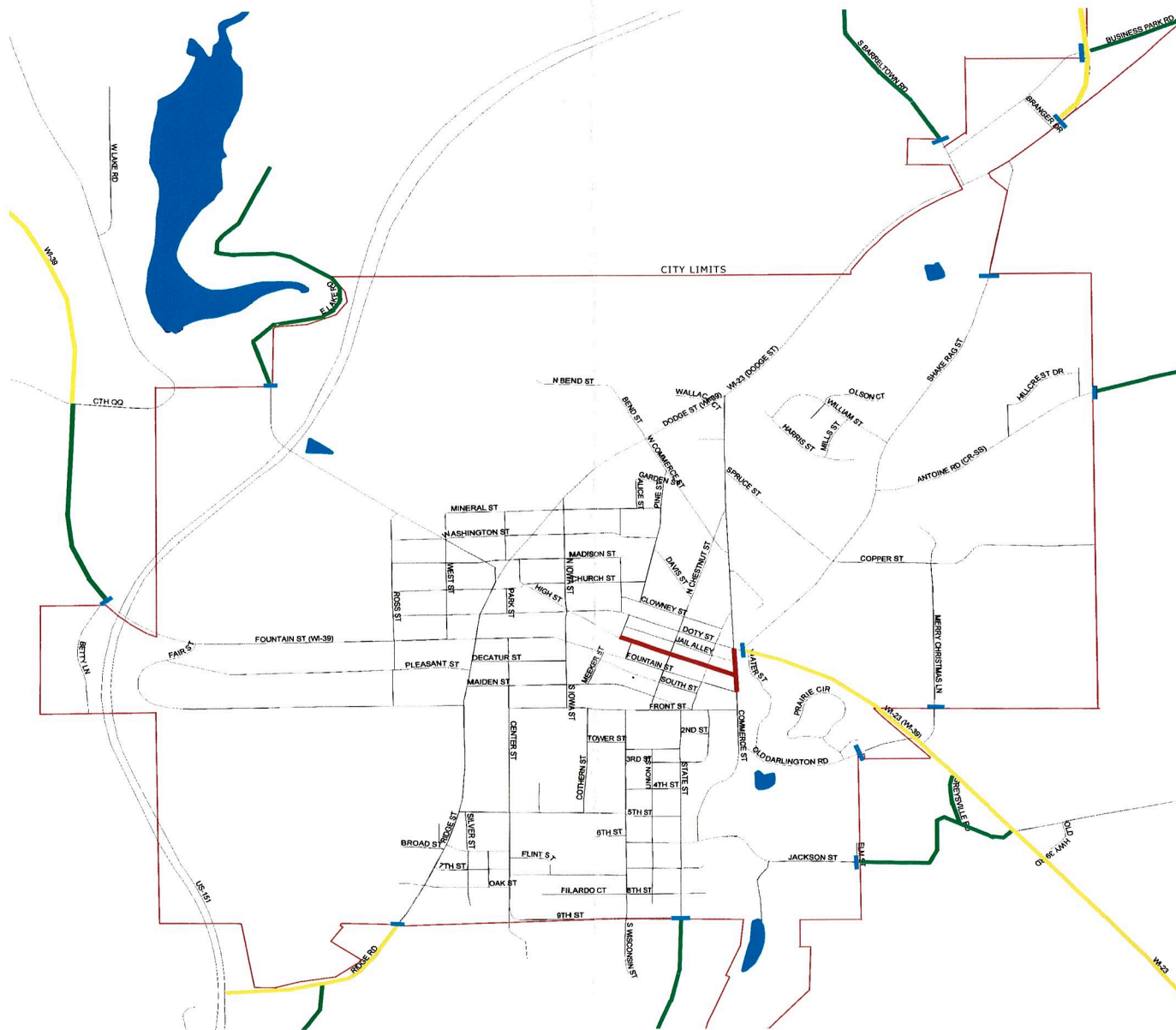
**HIGH STREET from  
N Wisconsin Street to Commerce Street**

**COMMERCE STREET from  
Fountain Street to Doty Street**

# City of Mineral Point ATV/UTV Operations Guide



Eff 04/01/2023



**Posted/Prohibited City streets**  
**Prohibited highways outside the city limits**  
**County or township roadway (Iowa County or Township rules apply)**  
**City limits/City routes end**

NOTE: The county and township roadways shown on this map do not fall under jurisdiction of the City of Mineral Point and are shown for reference only. Operators must follow the operating rules for the jurisdiction they are traveling through.

Visit City of Mineral Point web page at  
[www.cityofmineralpoint.com](http://www.cityofmineralpoint.com) for a bigger view.

#### ROUTES IN AND OUT OF THE CITY

The following routes provide an entrance and exit from the City and allow travel throughout the City:

- Cheese County Trail
- Ferndale Rd/State St
- CTH SS/Antoine Rd/Antoine St

The following routes provide a dead-end entrance into the City:

- CTH YD/Business Park Rd

The following routes provide a dead-end exit into the Township:

- Jackson St
- Merry Christmas Ln
- Old Barrettown Rd
- High St/East Lake Rd

This pamphlet is a guide for ATV/UTV travel in the City of Mineral Point. See Mineral Point Ordinance 72.085 for the complete rules and regulations regarding the operation and routes for ATV/UTVs.

**In it your responsibility to know the laws and regulations before you travel on approved city routes.** It is also important to note that this guide is for **ATV/UTVs only**. Off road motorcycles, dune buggies, go carts etc are illegal to operate on city streets.

Prohibited areas are posted with signage and mapped in this guide. The business district portion of High Street and Commerce Street are prohibited areas. **You cannot park on or cross posted/prohibited streets.**

Some streets are dead end routes as the only outlet is prohibited for ATV operation. Businesses on Business Park Road and Branger Drive are only accessible from CTH YD, a non-city route. There is no legal ATV/UTV access to Business Park Road from within the city limits.

The City Ordinance is more restrictive than state law on the operation requirements pertaining to ATV/UTVs.

If you are operating or someone in your party is operating anything other than an ATV/UTV, is under the age of 16 or does not have a valid driver's license, **YOU CANNOT OPERATE ON THE CITY ROUTE**. There are no exceptions to this. **PLAN YOUR TRIP ACCORDINGLY.**

It is the operator's responsibility to adhere to all state and local laws governing ATV/UTV usage. The City of Mineral Point has granted you the privilege to operate on city streets. This privilege can be taken away. Please do your part to ensure the routes remain safe and open for all to enjoy.

If you have any questions regarding the operation of ATV/UTVs on the city route, you can direct them to the Mineral Point Police Department at (608) 987-2313.