



COMMUNITY GATHERING SPACE VISION SURVEY

SUMMARY OF RESULTS

CITY OF KEWAUNEE
JULY 2025

Your Cedar Team



ERIC FOWLE, AICP

Senior Planner / Grant Coordinator

32 Years of Experience

Specializes In:

- Community Visioning
- Urban / Neighborhood Design
- Economic Development
- Workforce Housing
- Grant Writing



BRANDON STRELOW

Client & Project Manager

14 Years of Experience

Specializes In:

- Municipal Consultation
- Project Management
- Public Works & Utility Operations
- Asset Management
- Capital Improvement Planning
- Strategic Funding



CORY SCHEIDLER, AIA

Director of Architecture

25 Years of Experience

Specializes In:

- Project Management
- Municipal Architecture
- Space Needs Planning
- Park & Recreation Facilities
- Adaptive Re-Use / Historic Preservation



BUILDING TRUST
Your Project, Our Passion

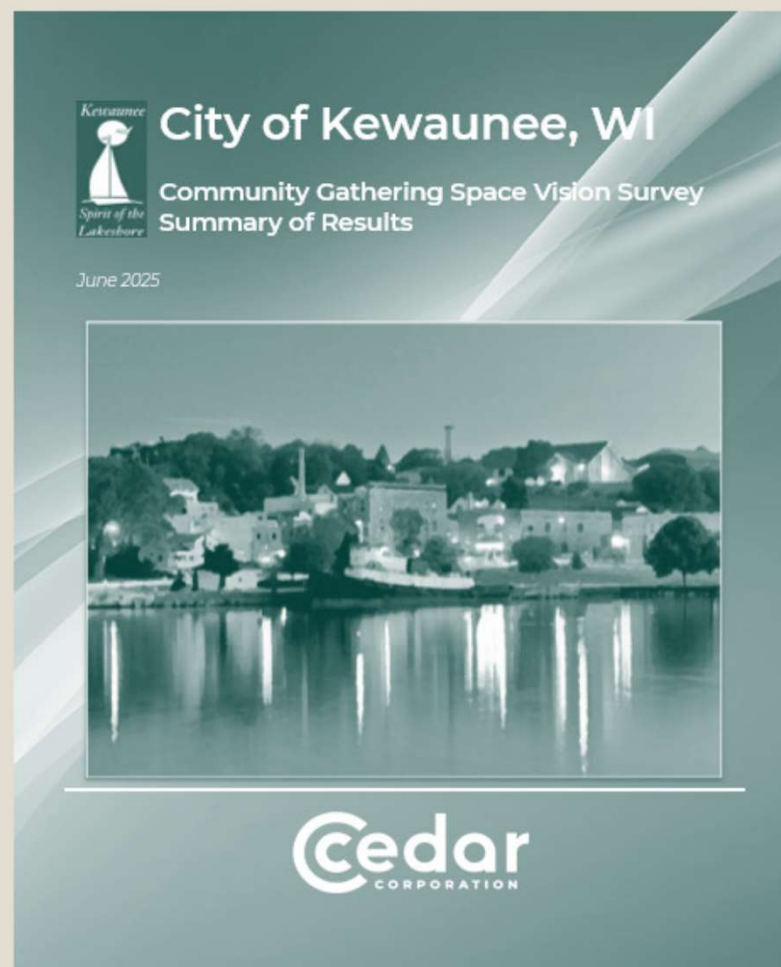


Agenda

- Background & Purpose
- Survey Methodology
- Survey Results
- Next Steps



Background & Purpose





Background & Purpose



- **Examine future needs** for an all-inclusive indoor community space(s) which could serve multiple functions.
- **Driven by** demographic changes, funding opportunities, and challenges with reduced or competing resources.
- **Initiate a more future-oriented conversation** about area residents' vision for accommodating the diverse needs of the community.
- Includes assessing needs for a **senior center/senior meal site**, a **multi-use community center**, a **public library expansion**, or other needs.
- This initial survey was conducted to **broadly gauge general and specific needs** of the community with the intent of utilizing the results to identify the next steps, including **additional community discussions** and **project studies**.

Background & Purpose

- Definitions

- **Senior Center:** Currently located in the basement of the Community Congregational Church (502 Center St.) the senior center connects older adults (60+) to vital community services that can help them stay healthy and independent. The facility serves meals M-F at 11:15 a.m. On Mondays, card playing occurs from 1-4 p.m. and on Wednesdays, Bingo is held from 9 a.m.-12 p.m. Current needs have been identified as having a space which is more accessible, provides more opportunities for activities, as well as having more natural lighting.
- **Kewaunee Public Library:** Currently located at 822 Juneau Street, the Kewaunee Public Library provides quality materials and services which fulfill educational, informational, cultural, and recreational needs for the community in an atmosphere that is welcoming and respectful. Current needs have been identified as having: more parking (preferably off-street), study rooms, casual gathering and programming spaces (including addressing ADA accessibility issues), as well as additional technology improvements.
- **Multi-Use Community Center:** A public space designed to serve people of all ages, fostering interaction and connection across generations, and typically offering programs, activities, and services catering to diverse needs and interests. No such facility currently exists.

Survey Methodology





Survey Methodology



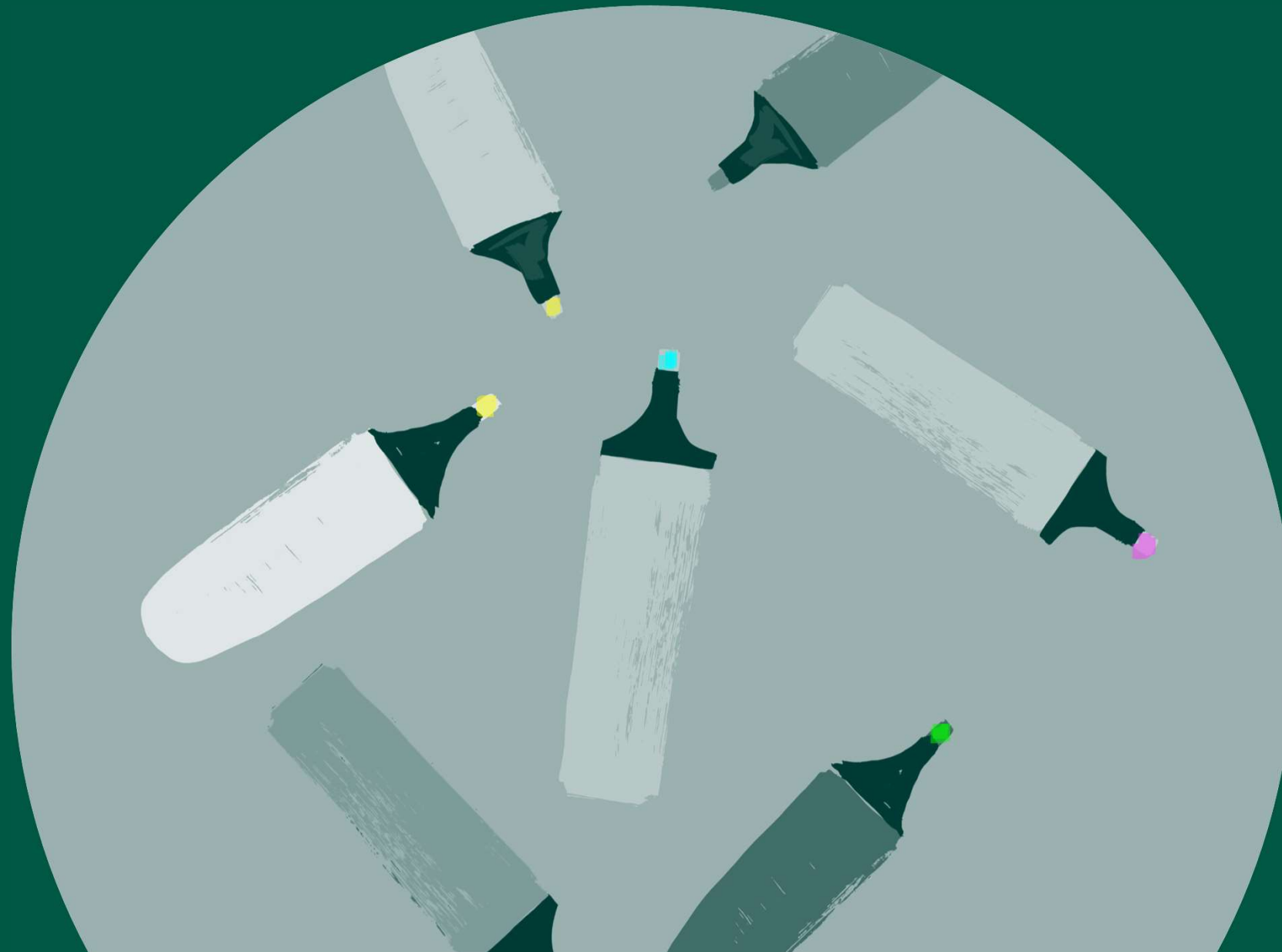
- Ad Hoc Survey Development Committee
 - Robin Nelson, City Council (as of survey date)
 - Scott Oftedahl, City Council
 - Carol Petrina, Kewaunee Public Library Director

Survey Methodology

- 25 Questions Developed
- Multiple Choice / Open-Ended
- On-Line Access Using SurveyMonkey
- Paper Copies Available at City Hall
- Promoted Using:
 - Flyer / QR Code
 - City Website
 - Social Media
 - Announcements / Word of Mouth
- Available for 5 Weeks (3/28/25 - 5/2/25)



Survey Results





Survey Results



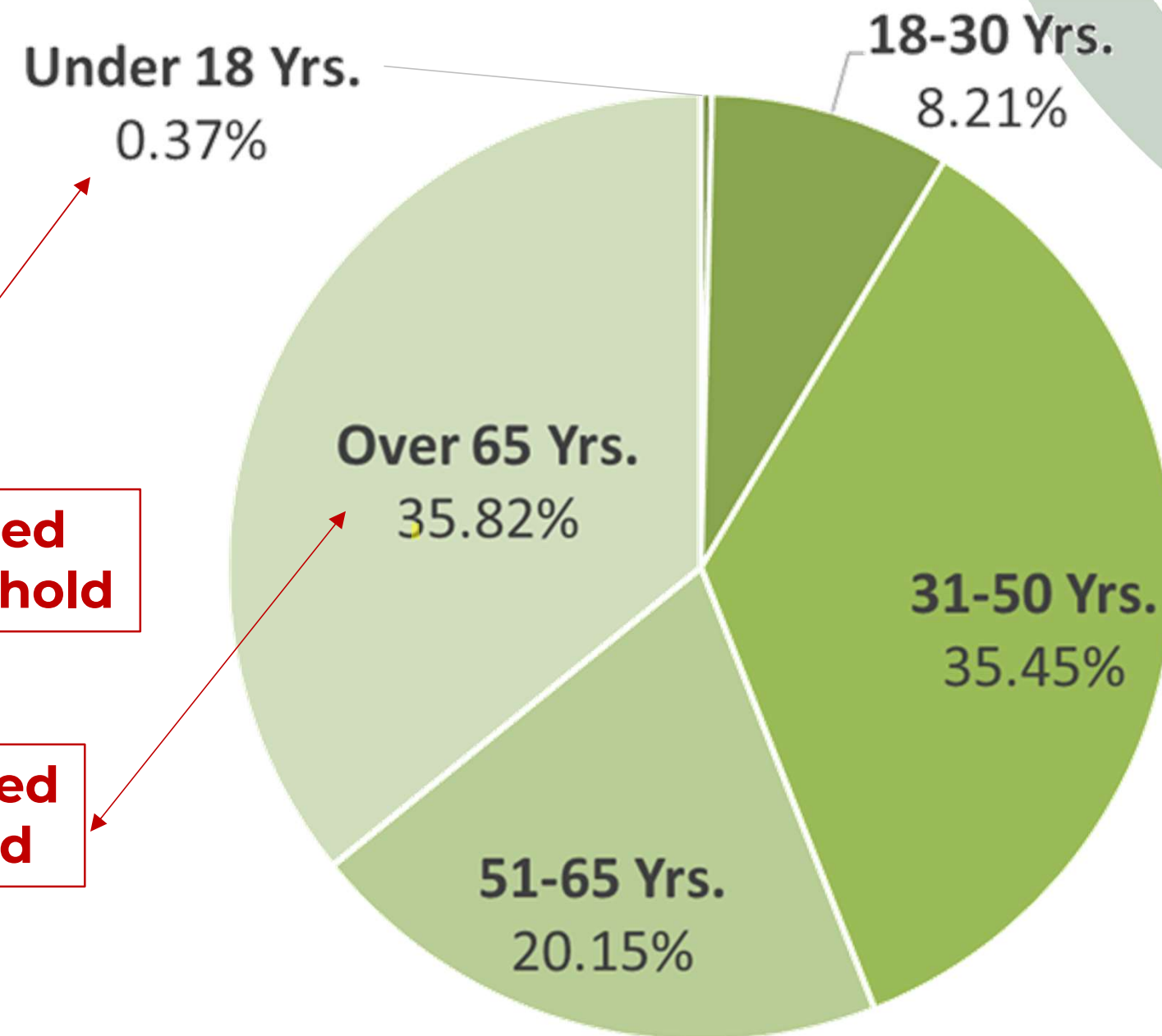
- 269 Total Survey Responses (45 in paper format)
- 9.6% Response Rate Based on 2024 Population (2,807)
 - Higher than the CORP Survey (which also has similar needs identified)
- 339 Responses Required to be Statistically Valid (its close!)
- Data Examined in 2 Groups: *“All Data” & “65 or Older Data”*

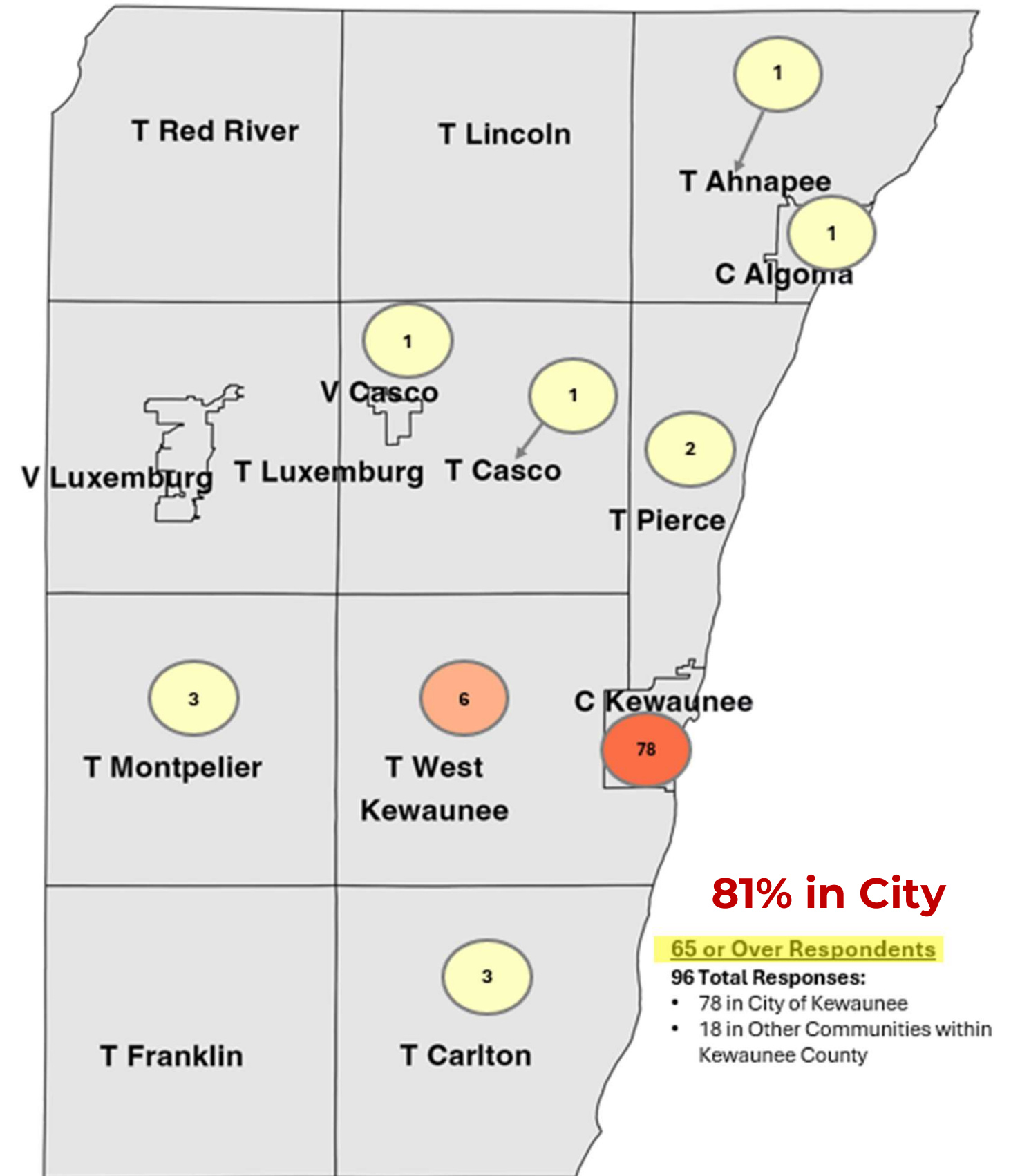
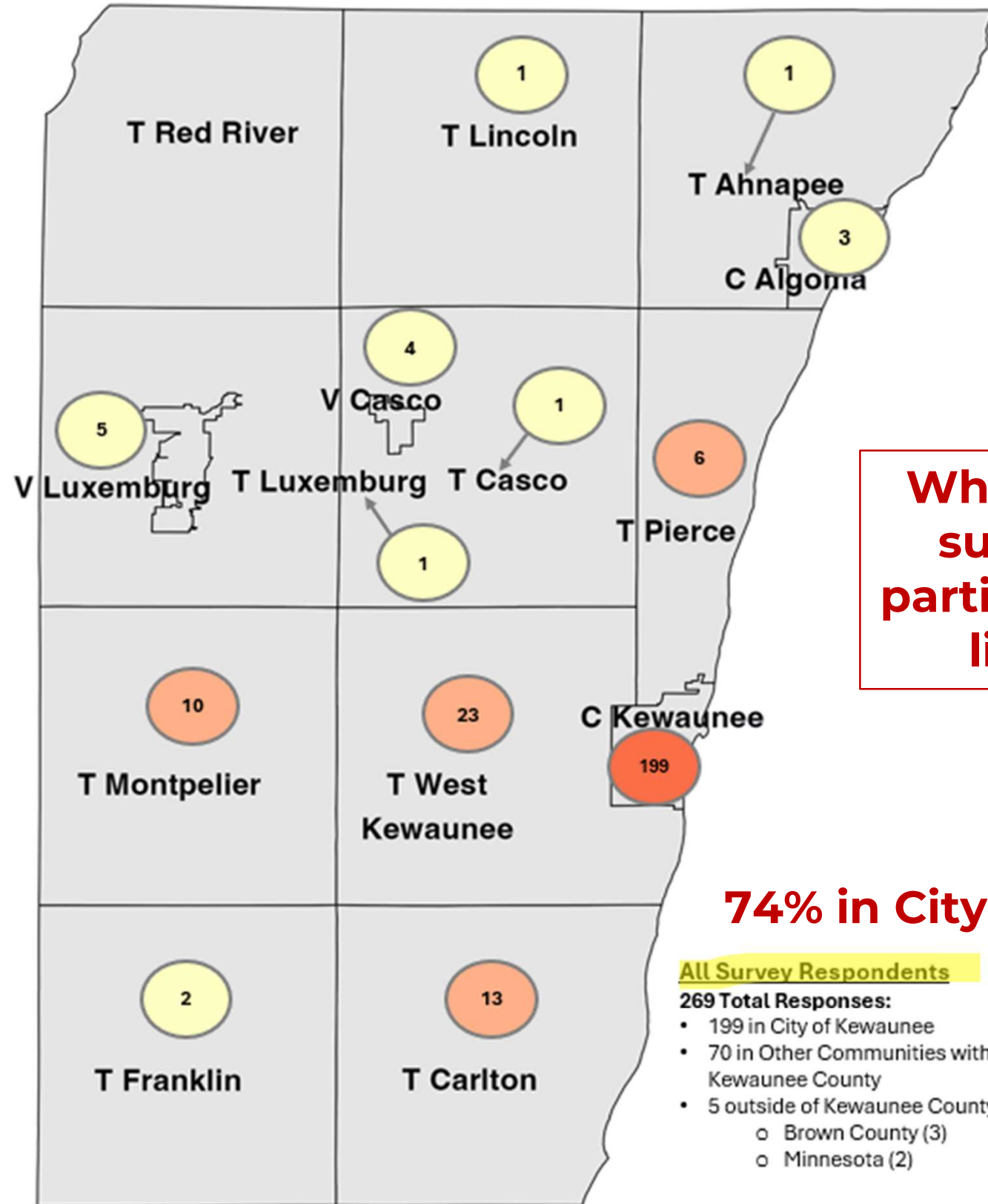
Survey Results

- Age Distribution of Respondents

Note that 98 responses (37.5%) stated they have children under 18 in household

Note that 91 responses (33.7%) stated they have seniors 65+ in household







Survey Results



- Top Organizations that Respondents Participate In

# of Mentions	Organization / Group / Activity
36	Church Organization
18	Friends of Kewaunee Library
16	Kewaunee Health and Fitness
12	Aging & Disability Resource Center (ADRC)
12	Kewaunee County Home & Community Education (HCE)
11	Other Miscellaneous (Red Cross, Special Olympics, Neighborhood Watch, etc.)
10	Senior Center / Meals
10	Educational Groups (KSD and LC PTAs, Scholarships, Retired Educ. Assn.)
9	Other Sports Organizations (trap club, volleyball, sportsmen's, fishing)
8	Other Unidentified
7	City Government (Council, Committee, Fire Dept., attend mtgs.)
7	Playing Card Clubs
7	Rotary Club
7	Kewaunee Youth Basketball Association
6	Lions Club



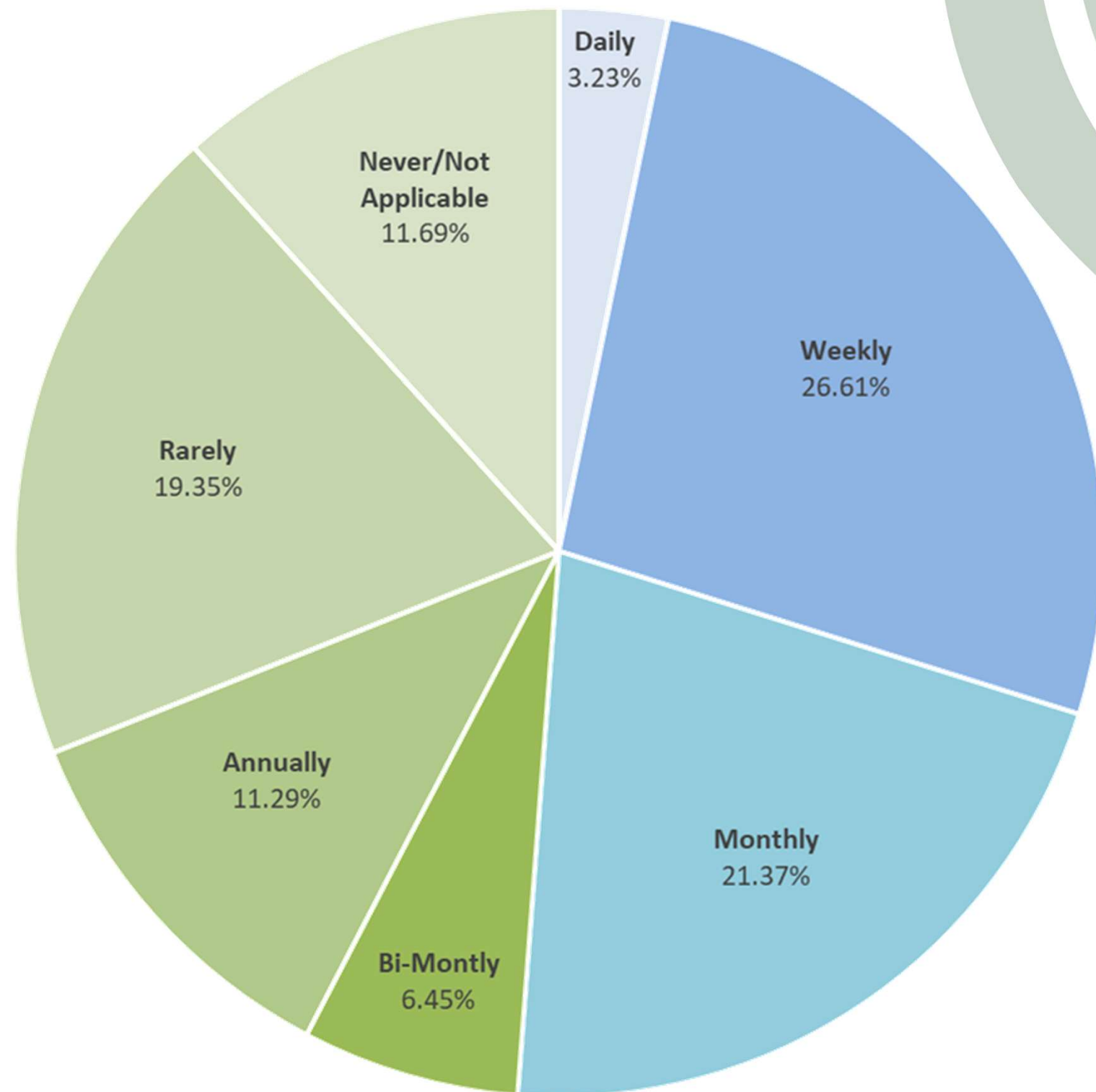
Survey Results

- Currently Used Meeting & Event Locations

Identified Meeting Locations	
ADRC Office	Kewaunee County Fairgrounds
Algoma Boat Club	Kewaunee Health & Fitness Center
Algoma High School	Kewaunee High School
Algoma United Methodist Church	Kewaunee Middle School
Anchor Down	Kewaunee Public Library
Bruemmer Park	Kewaunee Trap Club
Chamber of Commerce	Lakehaven Hall
City Hall	Legion Hall
Community Congregational Church	NWTC Green Bay
County Admin Building	NWTC Luxemburg
County Board Room	Pagel's Ponderosa Dairy
County Highway Department	Ryan Park
Down Syndrome Assn. of WI office (Green Bay)	St. Mary's Catholic Church - Luxemburg
Galleries	The Dugout (Algoma)
Grady Lodge	The Grove
Empowering & Supporting Individuals Office (Algoma)	The HUB in Algoma
Heritage Farm	Town Halls
History Center/Historical Society	Vintage Brick Venue and Events
Holy Rosary (Cafeteria)	Warming house at Dana Farm
Immanuel Lutheran Church	Wildflower Supper Club
Kewaunee Artisan Center	

Survey Results

- Kewaunee Public Library Usage
(All Data)



Survey Results

- Sufficient Programming?
 - For *All Data*, each age category had a resounding “No” indicated.
 - Ranged from 59.8% (Seniors) on the low end, to a high of 81.3% (Teens).
 - Young Children came in at 66.4%.
 - Both Adults and Families had “No” responses near 75% each.
 - The *65 and Older* data showed that 69.1% responded “No”.

Survey Results

- Existing Facility Improvement Needs
 - For *all survey results*, the **Senior Center** had the most responses in the “Needs Complete Renovation” category (50%), with “Needs Minor Improvements” coming in second with 25.3%.
 - For *all survey results*, the **Kewaunee Public Library** had the most responses (35.8%) in the “Needs Expansion” category, although “Needs Minor Improvements” came in second at 31.2%.
 - The *65 and Older Data* shows a 20-point increase (70%) in the “Needs Complete Renovation” responses for the **Senior Center**, while the *65 and Older Data* ratings for the **Kewaunee Public Library** are very similar to the set of responses for all survey results.

Survey Results

- Existing Facility Improvement Needs?
 - **Senior Center.** The *65 or Older* age-group's largest issues were *Building Parking* (33.8%), *Facility Location* (25%), and *Bathroom Access* (20%).
 - **Kewaunee Public Library.** Individual access issues were similar across *both sets of results data*, with the largest issues noted as *Building Parking* (32% and 33% respectively) and *Hours of Operation* (14.4% and 6.0% respectively).

Survey Results

- Comparable Facilities?
 - Only 41% of **all responses** thought there were sufficient existing private or non-profit spaces which exist to cover all event/meeting/function needs within the City.
 - 34.6% of respondents within the **65 and Older** data thought there were sufficient existing private or non-profit spaces available.

Survey Results

- New Facility Support?
 - Just over **52%** of *all survey takers* **“Strongly Agreed”** that area residents would benefit from a re-imagined, all-inclusive facility which serves as a Multi-Use Community Center.
 - An additional **26.9%** of respondents **“Agreed”**.
 - Only **15.1%** of all respondents **“Disagree”** or **“Strongly Disagree”**.
 - The results from just the *65 and Older* age group **mirror** the results from all survey participants.

Survey Results

- New Facility Support?
 - When asked if support would be given to combine the Kewaunee Public Library and Senior Center into a single all-inclusive Multi-Use Community Center, a majority of *all respondents* (**60.8%**) either **“Agreed”** or **“Strongly Agreed”**. A stronger **77.9%** of the *65 and Older* age group responded in the same manner.
 - **35.6%** of *all respondents* stated they would **“Strongly Agree”** with investing tax dollars into a new, centralized, all-inclusive Multi-Use Community Center. An additional **28.1%** of respondents **“Agree”**, while **21.2%** chose **“Disagree”** or **“Strongly Disagree”**. For the *65 and Older* age-group, **42.2%** **“Strongly Agree”**, with another **28.9%** stating they **“Agree”**.

Survey Results

- New Facility Support?
 - Over **78% of *all respondents***, and over **74% of *65 and Older*** respondents stated **they would be willing to pay rental fees** to use a new publicly-owned, centralized facility for private events.

Survey Results

- New Facility Location?
 - 45% of Survey Takers responded.
 - 104 specific suggestions:
 - Marquette School Site (65, 62.5%)
 - NOT at Marquette School Site (7, 6.7%)
 - Baumeister Road Site (6, 5.8%)
 - Mermaid Tails Site (5, 4.8%)
 - Ellis Street/Hamachek Property (5, 4.8%)
 - Other Specific Site (4, 3.8%)
 - Fitness Center Area (4, 3.8%)
 - Hillcrest School Site (3, 2.9%)
 - City Hall Area (3, 2.9%)
 - Stump Pond (2 / 1.9%)



Next Steps





Next Steps



1. Space Needs Study

- Validate Deficiencies Identified from Survey
- Identify New Facility Needs
 - Approximate Size
 - Facility Functions
 - Site Dependency / Potential Locations
 - Conceptual Layouts & Estimated Construction Costs
 - Potential Funding Sources

2. Community Engagement Meeting

- Present Survey and Space Needs Study Results
- Discuss Funding Options & Coordination

QUESTIONS?



THANK YOU



ERIC.FOWLE@CEDARCORP.COM



WWW.CEDARCORP.COM