



**PARKS, BEACHES, NATURAL AREAS AND TRAILS**

# **MASTER PLAN**

**DOCUMENT 2: CONCEPT PLANS**

APRIL, 2016



**CONFLUENCE**

ACKNOWLEDGMENTS

PARK COMMITTEE MEMBERS

Scott Ferguson, Chairman  
Patrick Regan, Vice-Chairman  
Lindsey Carr  
Jim Elvestrom  
Leslie Gustafson  
Cindy Hunt Webster  
Jonathan Weiss

CITY STAFF

Dana Young, Administrator-Clerk/Treasurer  
Members Name  
Members Name  
Members Name  
Members Name

MAYOR AND CITY COUNCIL

Paul A. Skrede, Mayor  
Steven Erickson  
Darel Gustafson  
Tony Jewett  
Keith Kask

CONSULTANT TEAM

Terry Minarik  
Brad Aldrich  
Emily Neuenschwander  
Jake Coryell

CONFLUENCE

- 530 North Third Street
- Suite 120
- Minneapolis, MN 55401
- tel: 612 333 3703

TABLE OF CONTENTS

DOCUMENT 1: EVALUATION AND STRATEGY

1. Introduction/Overview	4
2. Changes and Trends	7
3. Existing Park System	12
4. Community Input	18
5. Vision and Strategy	36

DOCUMENT 2: CONCEPT PLANS

Thorpe	5
Village Hall	6
Burton	7
Cottagewood	10
Shuck	11
Donkey	12
Haralson	14
Pump	15
Deephaven	20
Robinson's Bay	21
Sandy	22
Rocky	23
Linwood	24
Nocomo	25
Cleveland Trail	28
Northome	29





# PARKS

CONCEPTS





1. **THORPE PARK**
2. **VILLAGE HALL PARK**
3. **BURTON PARK**
4. **COTTAGEWOOD PARK**
5. **SHUCK PARK**
6. **DONKEY PARK**
7. **HARALSON PARK**
8. **PUMP PARK**

1. **THORPE PARK**
2. **VILLAGE HALL PARK**
3. **BURTON PARK**
4. **COTTAGEWOOD PARK**
5. **SHUCK PARK**
6. **DONKEY PARK**
7. **HARALSON PARK**
8. **PUMP PARK**





# THORPE

## PARK CONCEPT

### HIGHLIGHTS:

- New Shelter
- Removal of a diamond
- Parking lot reconfiguration
- Nature Play
- Additional Play area
- Splash Pad
- Native vegetation and swales
- Path reconfigurations
- Disc Golf







## VILLAGE HALL

SCALE: 1"=60'

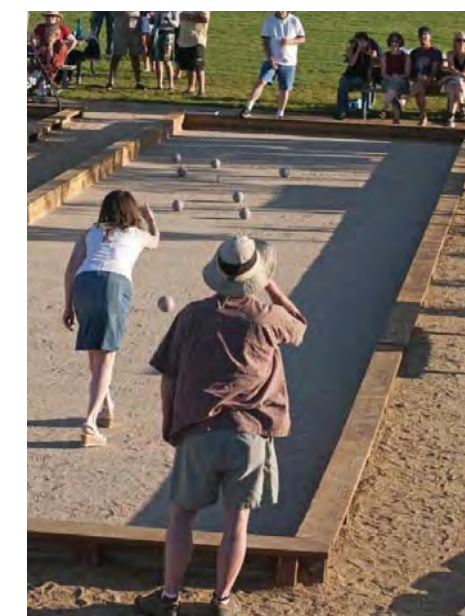
0' 15' 30' 60' 120'

# VILLAGE HALL

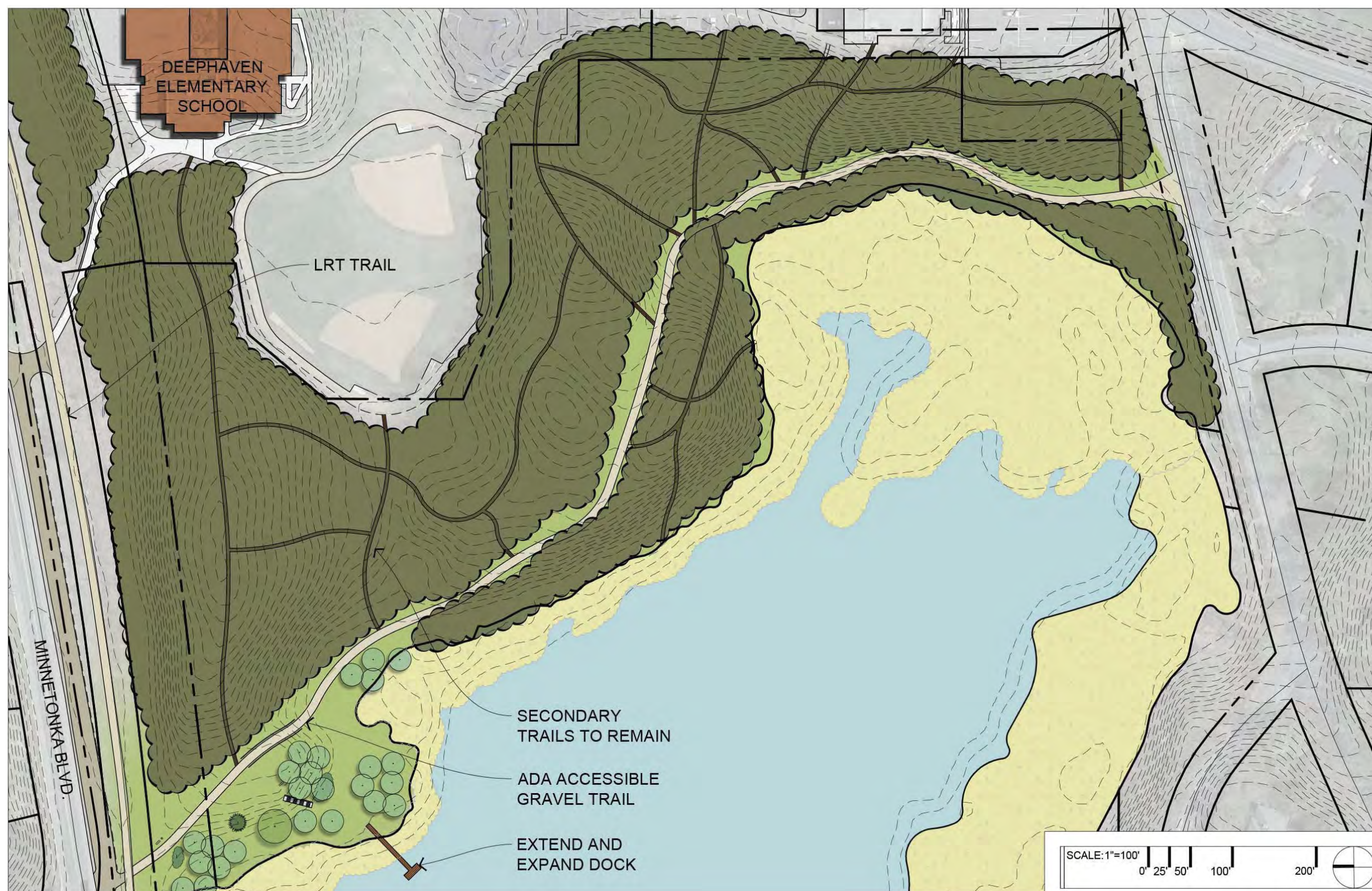
## PARK CONCEPT

### HIGHLIGHTS:

- Remove Diamond
- New Shelter
- Move Play Area
- Create Plaza with Feature Evergreen
- Tree and Garden
- Pave Hockey Rink
- Add Bocce Courts
- Raingardens and Swales for Drainage Issues







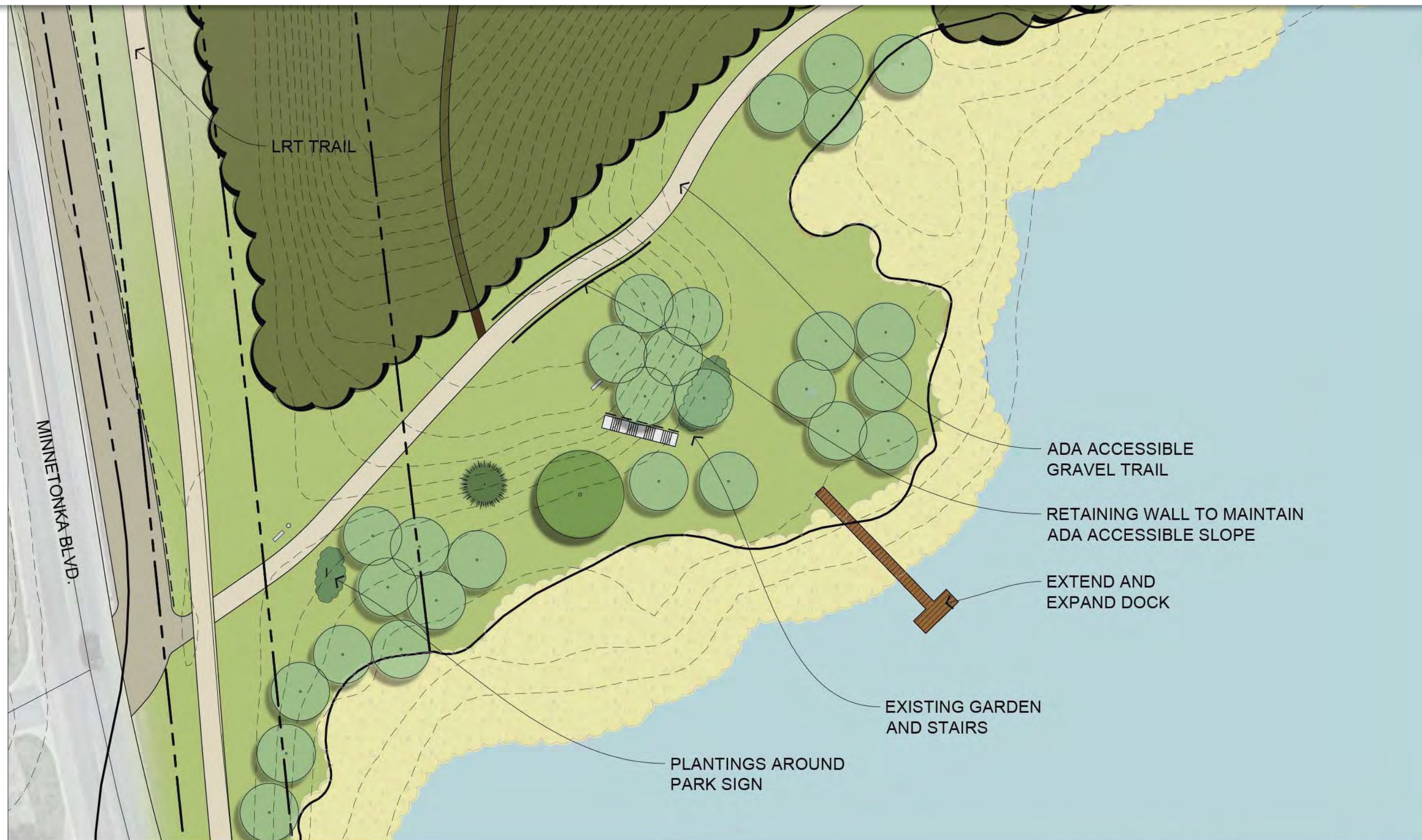
## BURTON

### PARK CONCEPT

#### HIGHLIGHTS:

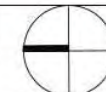
- Retain existing character
- Make improvements to ensure ADA accessibility
- Enhance entry
- Extend and expand dock
- Pave path from LRT to school
- Add bike rack near school
- Redirect culvert for more effective stormwater management





## BURTON PARK ENLARGEMENT

SCALE: 1"=40'







## BURTON PARK SCHOOL CONNECTION

SCALE: 1"=40'

0' 10' 20' 40'

80'







# COTTAGEWOOD

## PARK CONCEPT

**HIGHLIGHTS:**

- Planted Edge
- Stair/Seating transition
- New play areas
- Additional picnic tables



COTTAGEWOOD







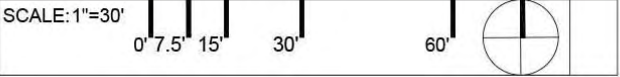
# SHUCK

## PARK CONCEPT

- HIGHLIGHTS:
- Street reconfiguration to expand park and include parking stalls
  - Nature Play Area
  - Elementary half-court basketball
  - Move Sign
  - Park Paths
  - Native vegetation in swale
  - Planted Edge - defines boundary



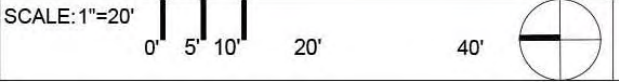
SHUCK PARK







DONKEY PARK



# DONKEY

## PARK CONCEPT 1

- HIGHLIGHTS:
- Reduce maintenance with Native vegetation and "No-mow" turf
  - Added patio or patio and firepit
  - Added sign







# DONKEY

## PARK CONCEPT 2 & 3

### HIGHLIGHTS:

- Reduce maintenance with Native vegetation and "No-mow" turf
- Added sign
- Added patio or patio and firepit





# HARALSON

## PARK CONCEPT

**HIGHLIGHTS:**

- Pave Parking
- Screen Maintenance Yard
- Patio with firepit and picnic tables
- Add Signage



HARALSON







# PUMP

## PARK CONCEPT

### HIGHLIGHTS:

- Sculpture Garden
- Park sign
- Enhanced Path
- Bench placement
- Native swale
- Planted Edge



PUMP PARK

SCALE: 1"=30'  
0' 7.5' 15' 30' 60'





# BEACHES

## CONCEPTS





## BEACHES:

- 9. DEEPHAVEN BEACH
- 10. ROBINSON'S BAY BEACH
- 11. SANDY BEACH
- 12. ROCKY BEACH
- 13. NOCOMO BEACH
- 14. LINWOOD BEACH





DEEPHAVEN BEACH



# DEEPHAVEN

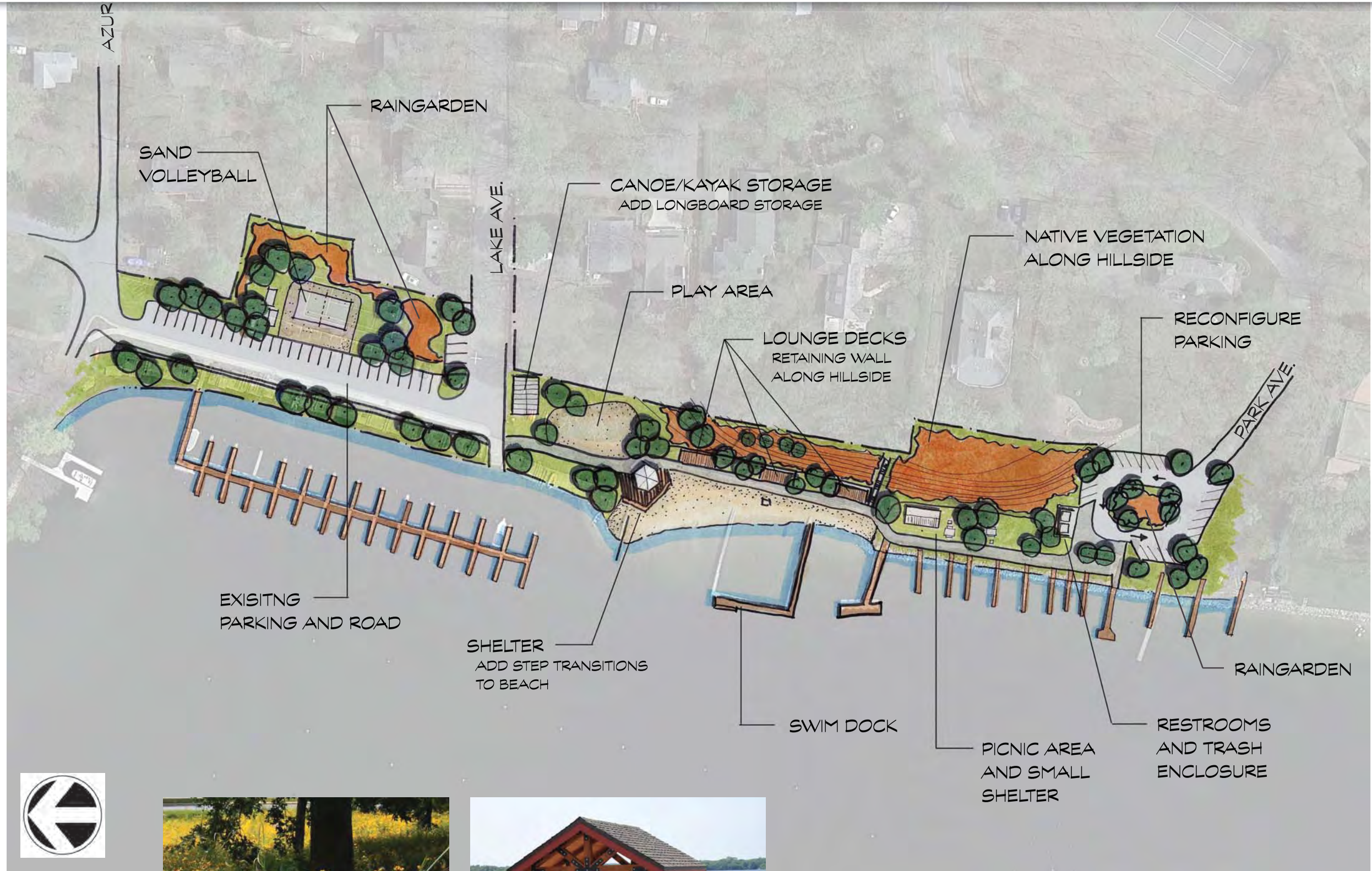
## BEACH CONCEPT 1

### HIGHLIGHTS:

- Additional Group Shelter
- Beach Expansion
- Reconfigure South Parking
- Add ADA Accessible Dock
- In-Water Slackline
- Move Play Area
- Native Vegetation swale and hillside plantings
- Hammock Lounge
- Signs







# DEEPHAVEN

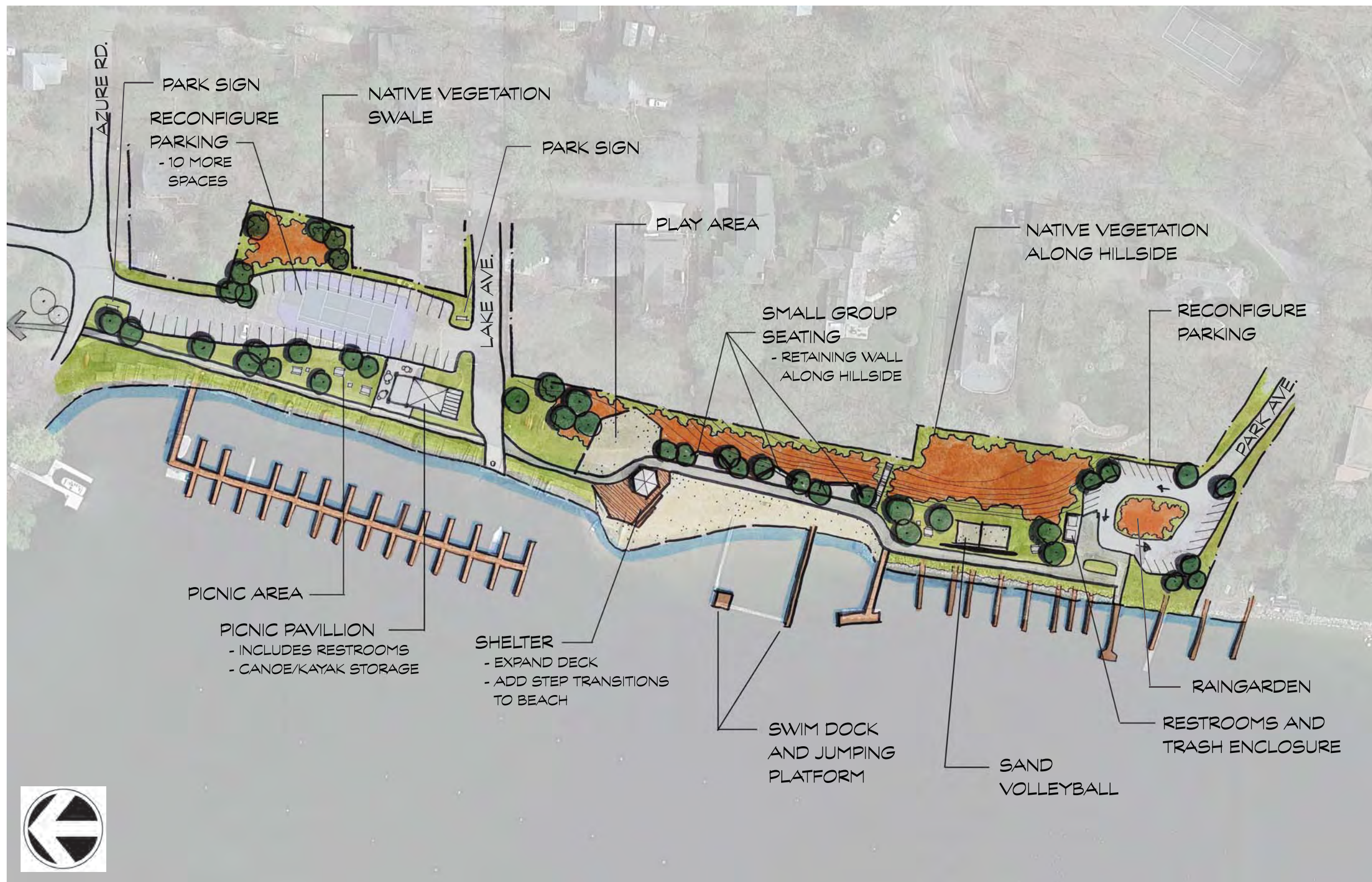
## BEACH CONCEPT 2

### HIGHLIGHTS:

- Replace Sport Court for Sand Volleyball
- Replace Dock
- Reconfigure South Parking
- Move and Enhance Play Area
- Native Vegetation swale and hillside plantings
- Lounge Decks
- Stair Transitions to Beach
- Shade Structure







# DEEPHAVEN

## BEACH CONCEPT 3

### HIGHLIGHTS:

- Reconfigure N & S Parking
- Create more usable space on the North side of site
- Picnic Pavilion & Picnic Area
- Replace Dock
- Move and Enhance Play Area
- Sand Volleyball
- Native Vegetation swale and hillside plantings
- Small Group Seating
- Expand Deck
- Green Connection to Northome Trail





# ROBINSON'S BAY

## BEACH CONCEPT

### HIGHLIGHTS:

- Reconfigure Parking
- Native Vegetation
- Additional Picnic Tables



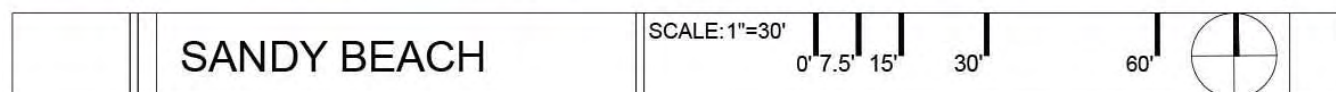
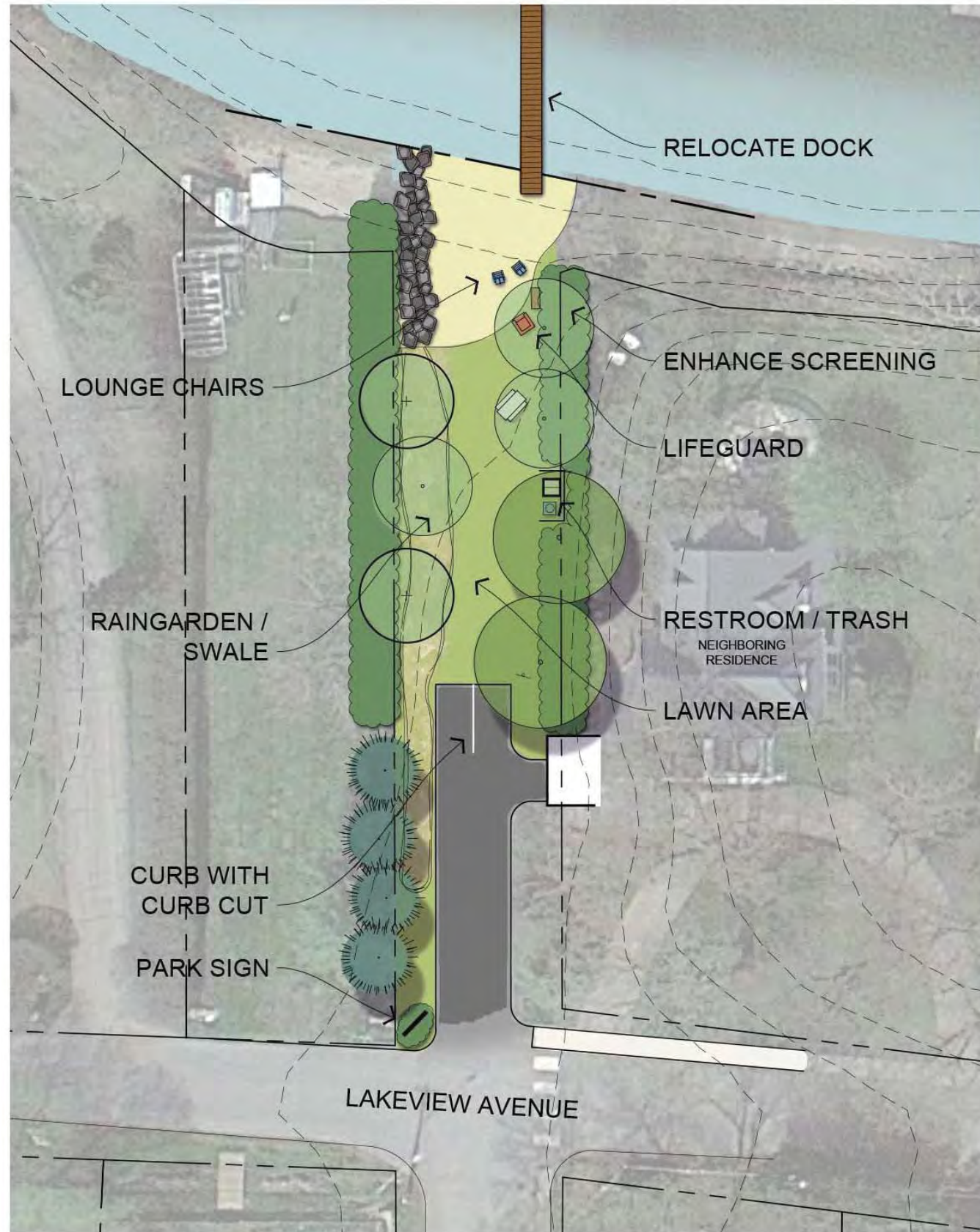
ADA accessible picnic table



ROBINSON'S BAY BEACH







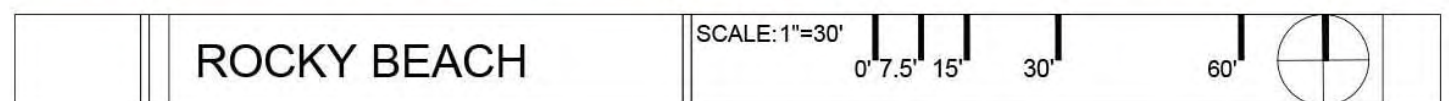
# SANDY BEACH

## BEACH CONCEPT

### HIGHLIGHTS:

- Enhance Screening
- Raingarden
- Lounge Chairs





# ROCKY BEACH

## BEACH CONCEPT

### HIGHLIGHTS:

- Reconfigure Parking
- Native Vegetation swale
- Lawn Games Court
- Lounge chairs and informal seating



# LINWOOD

IMPROVEMENT SUGGESTIONS:

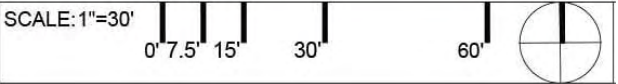
- Consider small scale wayfinding signage marking the trail to Linwood vs. neighboring driveways
- Work with adjacent landowner to prevent lawn waste disposal on trail and beach
- Topdress the beach area with sand or small, rounded gravel to prevent erosion







NOCOMO BEACH



# NOCOMO

## BEACH CONCEPT

- HIGHLIGHTS:
- Reconfigure Parking
  - Native Vegetation swale







# TRAILS

## CONCEPTS

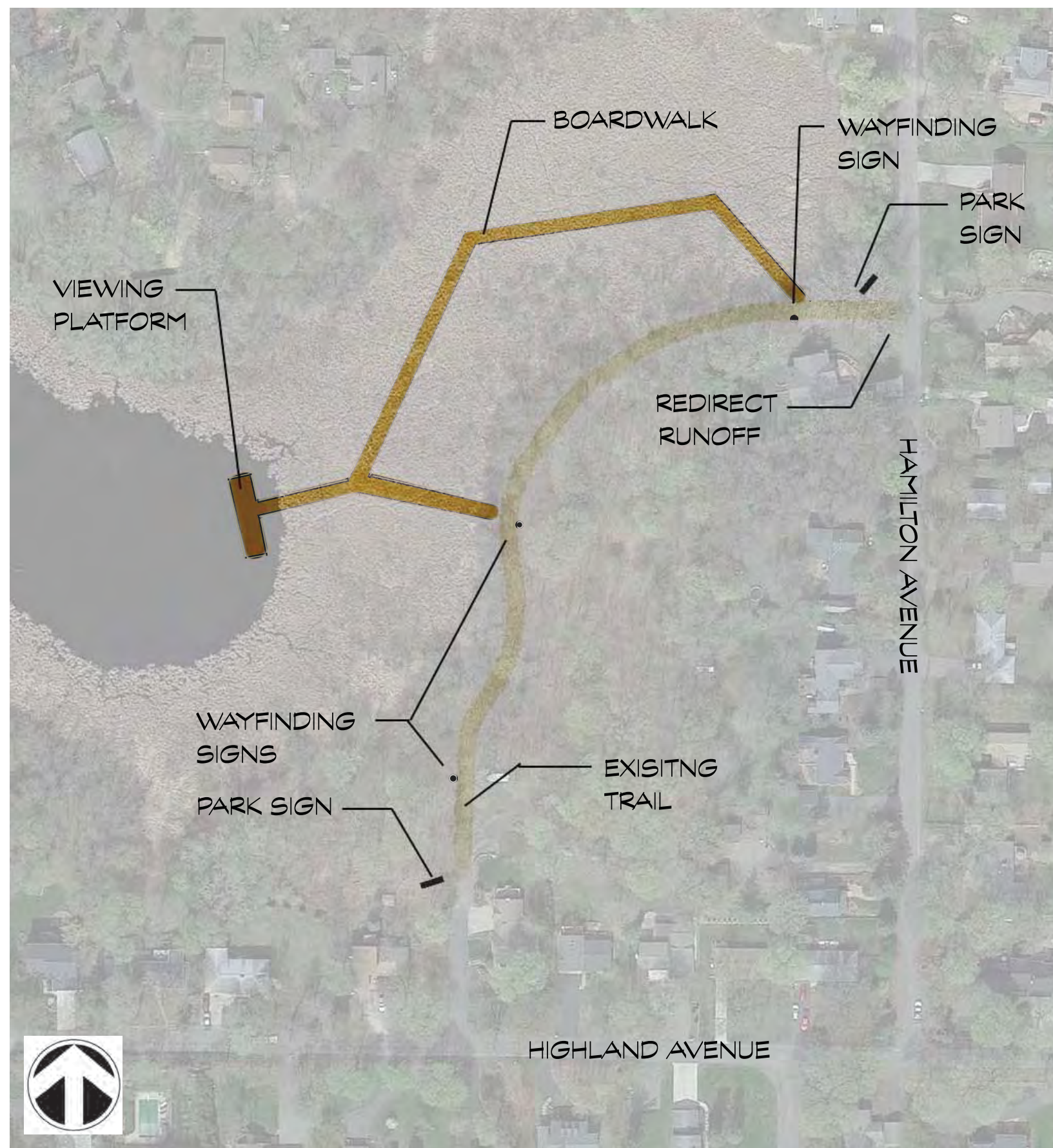




**TRAILS:**

- 15. CLEVELAND TRAIL
- 16. NORTHOME TRAIL





## CLEVELAND TRAIL ON LAKE LOUISE

### IMPROVEMENT SUGGESTIONS:

- Add Wildlife Habitats
- Consider adding a boardwalk for wildlife viewing and trail diversity
- Consider small scale wayfinding signage
- Redirect runoff to avoid further trail erosion





# NORTHOME TRAIL

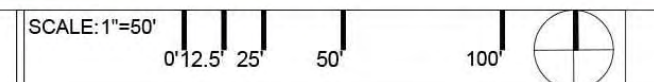
## CONCEPT 1

### HIGHLIGHTS:

- Dog Run
- Native Vegetation swale



NORTHOME TRAIL







# NORTHOME TRAIL

CONCEPT 2 & 3