

CITY OF CLAYTON

SCOTT CREEK AERIAL SEWER REPLACEMENT

ISSUE FOR BID



VICINITY MAP
NOT TO SCALE



CITY of CLAYTON
— RABUN COUNTY, GA —



LOCATION MAP
NOT TO SCALE

SHEET INDEX	
Sheet Number	Sheet Title
G-0	COVER SHEET
C-1	AERIAL SEWER PLAN
DT-1	AERIAL SEWER CROSSING DETAILS
DT-2	AERIAL SEWER CROSSING DETAILS

REVISION BLOCK			
NO.	ISSUE	BY	DATE
0	ISSUE FOR BID	WRH	11/2/2021

NOVEMBER 2021



Georgia Registered Engineering Firm PEF-004433
Expires 06/30/2022

360 Interstate North Parkway, Suite 250
Atlanta, GA 30339
Phone — (404) 334-4310
Web — www.freese.com

11/02/2021



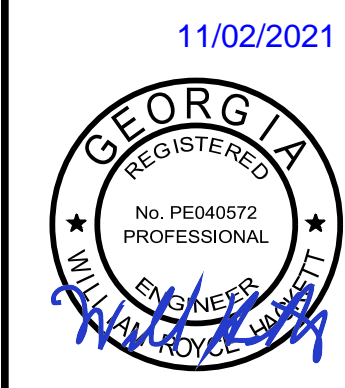
ISSUED FOR BID

1. ALL DATA SHOWN IS BASED OFF GIS DATA OBTAINED FROM PUBLIC RECORDS. NO SURVEY WAS COMPLETED FOR THIS PROJECT.
2. CONTRACTOR SHALL BE RESPONSIBLE FOR FIELD VERIFYING ALL LOCATIONS, DEPTHS, SIZES AND MATERIALS OF THE EXISTING SANITARY SEWER SYSTEM.
3. CONTRACTOR TO ENSURE NEW AERIAL PIPE MAINTAINS EXISTING INVERT ELEVATIONS AND SLOPE.
4. THE NEW PIERS SHALL IN NO CASE BE INSTALLED WITHIN THE CREEK BED. SET PIERS A MINIMUM OF 3' FROM THE TOP OF BANK ON EITHER SIDE.
5. THIS SITE FALLS WITHIN ZONE AE AS SHOWN ON FEMA FIRM PANEL 13241C0119D, EFFECTIVE DATE 9/16/2010.
6. CONTRACTOR TO PROVIDE SILT FENCE ALONG THE TOP OF BANK AS INDICATED ON DRAWINGS WITH A SILT FENCE OUTLET LOCATED AT THE LOW POINT.
7. ALL CARRIER PIPE WITHIN CASING PIPE TO BE INTERNALLY RESTRAINED PIPE SUCH AS TR-FLEX OR APPROVED EQUAL.
8. ALL DIP TO BE EPOXY COATED WITH A MINIMUM DRY FILM THICKNESS OF 3 MILS.
9. ALL DIP CARRIER PIPE NOT IN CASING SHALL BE POLYETHYLENE WRAPPED.
10. ALL CONSTRUCTION ACCESS AND ACTIVITIES TO TAKE PLACE WITHIN EXISTING SEWER EASEMENTS AND PUBLIC R/W. COORDINATE WITH CITY OF CLAYTON FOR EASEMENT INFORMATION.

ABBREVIATIONS	
DB	DEED BOOK
DIP	DUCTILE IRON PIPE
EX	EXISTING
MH	MANHOLE
PB	PLAT BOOK
PC	PRESSURE CLASS
PG	PAGE
RJ	RESTRAINED JOINT
SSMH	SANITARY SEWER MANHOLE
SN	STUB NODE

(S) EXISTING SEWER MAIN
 (10) PROPOSED SEWER MAIN
 — SS — PROPERTY LINE
 — SS — SILT FENCE
 — R — CONTOUR
 — SF — SF — 1% CHANCE ANNUAL FLOOD BOUNDARY
 — — — 0.2% CHANCE ANNUAL FLOOD BOUNDARY
 — 1% — FLOODWAY
 — 0.2% — CREEK
 — F/W — EXISTING MANHOLE
 — — — PROPOSED MANHOLE

Freese and Nichols, Inc.
Georgia Registered Engineering Firm PEF-004433



**FREESE
& NICHOLS**
360 Interstate North Parkway,
Suite 250
Atlanta, GA 30339
Phone - (404) 334-4310
Web - www.freese.com

CITY OF CLAYTON

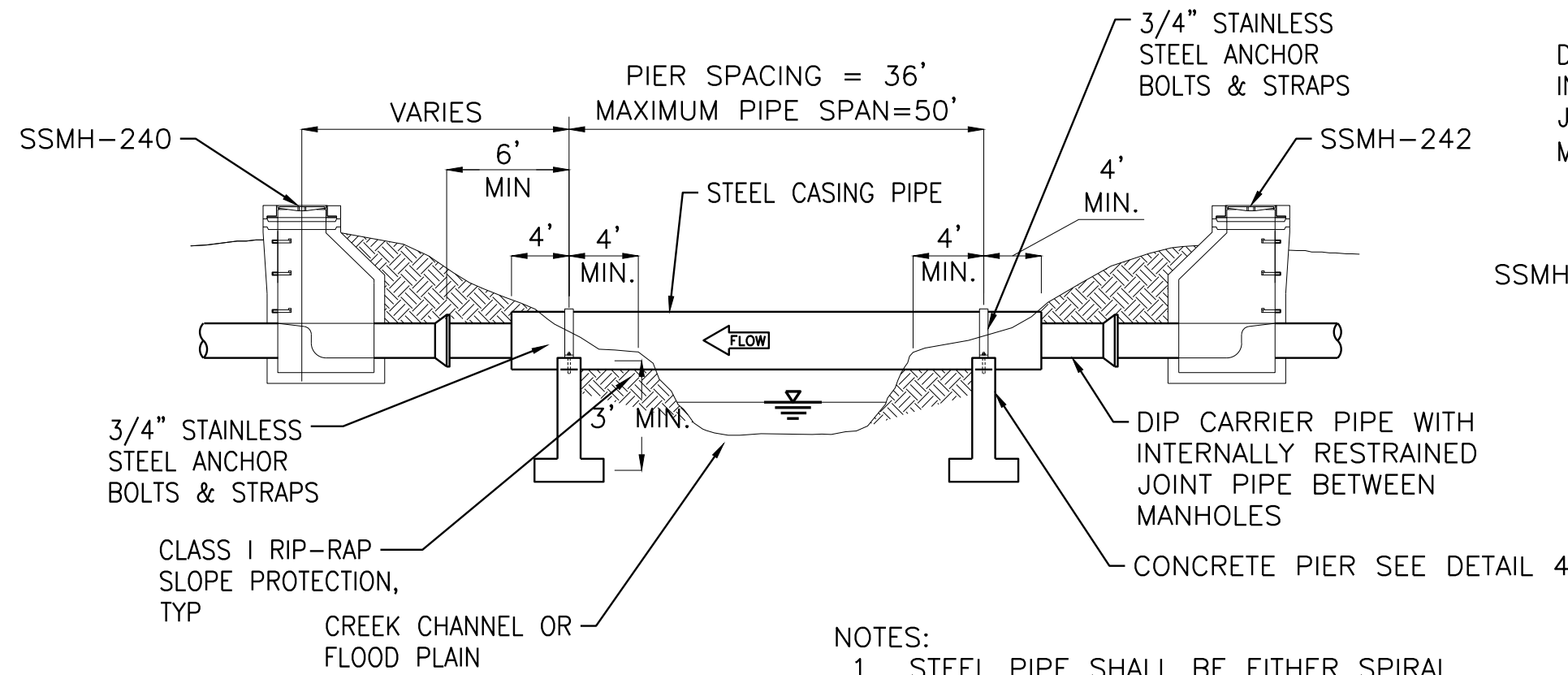
SCOTT CREEK AERIAL SEWER REPLACEMENT

CIVIL

AERIAL SEWER PLAN

NO.	ISSUE	BY	DATE	144.028 NO.
0	ISSUE FOR BID	WRH	11/2/2021	CYG20163
				DATE NOV 2021
				DESIGNED K-KP
				DRAWN K-KP
				REVISED
VERIFY SCALE	Bar is one inch on original 0 = 1" on this sheet, adjust scale	FILE NAME		WRH
0 = 1		CV-PP.dwg		

SHEET	C-1
SEQ.	

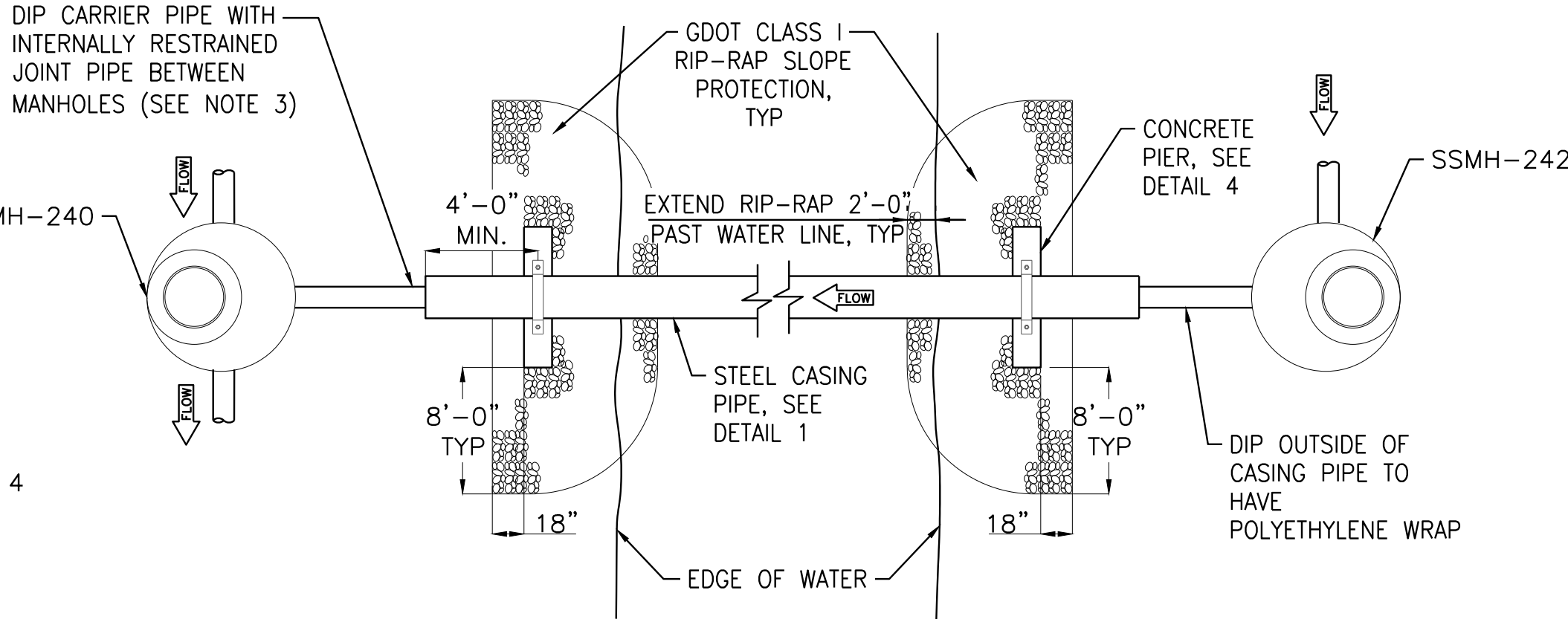


CARRIER PIPE, DIP DIAMETER (IN.)	CASING PIPE, STEEL DIAMETER (IN.)	MINIMUM CASING PIPE WALL THICKNESS (IN.)	ALLOWABLE SPAN (FT.)
10	18	0.50	50
12	20	0.50	50

- NOTES:
1. STEEL PIPE SHALL BE EITHER SPIRAL WELDED OR SMOOTH WALL SEAMLESS WITH A MINIMUM YIELD STRENGTH OF 35,000 PSI.
 2. STEEL CASING PIPE AND DIP CARRIER PIPE SHALL BE EPOXY COATED WITH A MINIMUM DRY FILM THICKNESS OF 3 MILS.
 3. DUCTILE IRON PIPE SHALL BE SUPPORTED WITH TWO CASING SPACERS AT EVERY JOINT WITHIN THE CASING PIPE AND ONE IN THE CENTER.
 4. SUPPORT TYPE FOR PIERS SHALL BE DETERMINED BY SUBGRADE (ROCK OR SOIL) AS ENCOUNTERED IN FIELD. REFER TO DETAIL 5 IF APPROPRIATE.

AERIAL PIPE CROSSING STEEL CASING PIPE ELEVATION

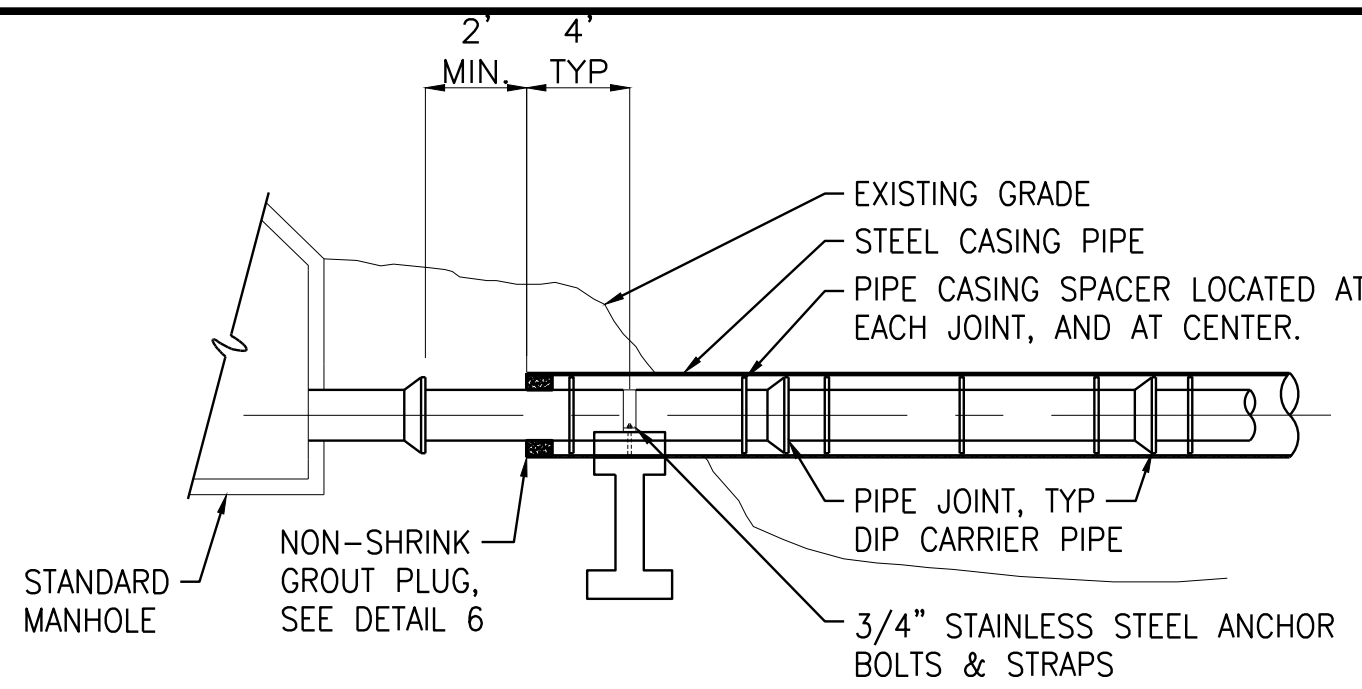
NOT TO SCALE



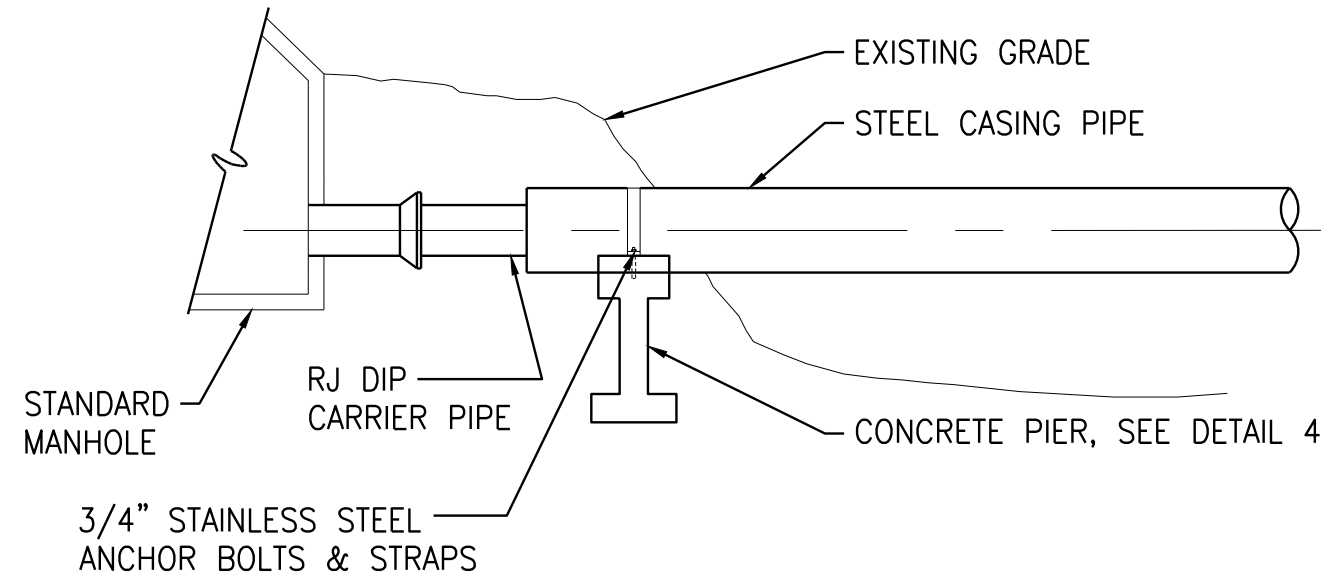
- NOTES:
1. RIP RAP FOR SLOPE PROTECTION SHALL BE GDOT CLASS I RIP RAP.
 2. WHERE DUCTILE IRON PIPE IS USED FOR CARRIER PIPE, DUCTILE IRON CARRIER PIPE SHALL BE INSTALLED UTILIZING 3 PIPE ALIGNMENT GUIDES PER JOINT, ONE SET AT EACH END AND ONE IN THE CENTER.
 3. ALL DIP SHALL BE INTERNALLY COATED WITH PROTECTO 401.

AERIAL PIPE CROSSING TYPICAL PLAN

NOT TO SCALE



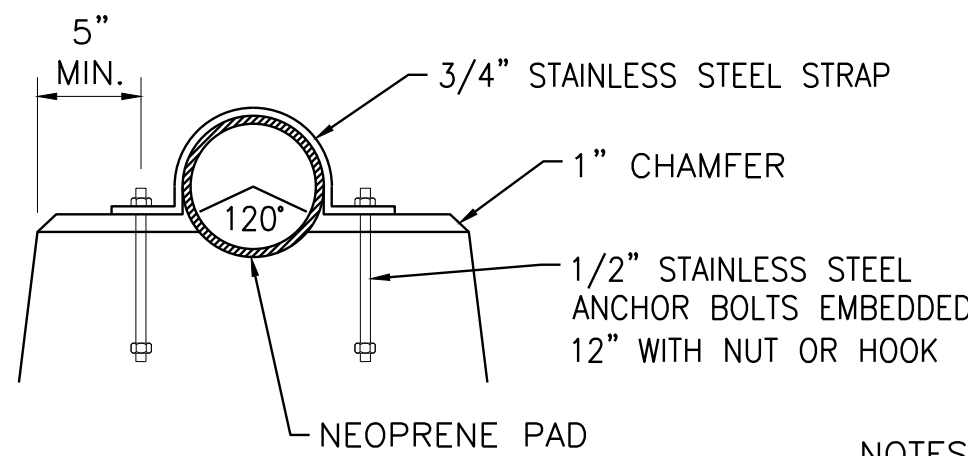
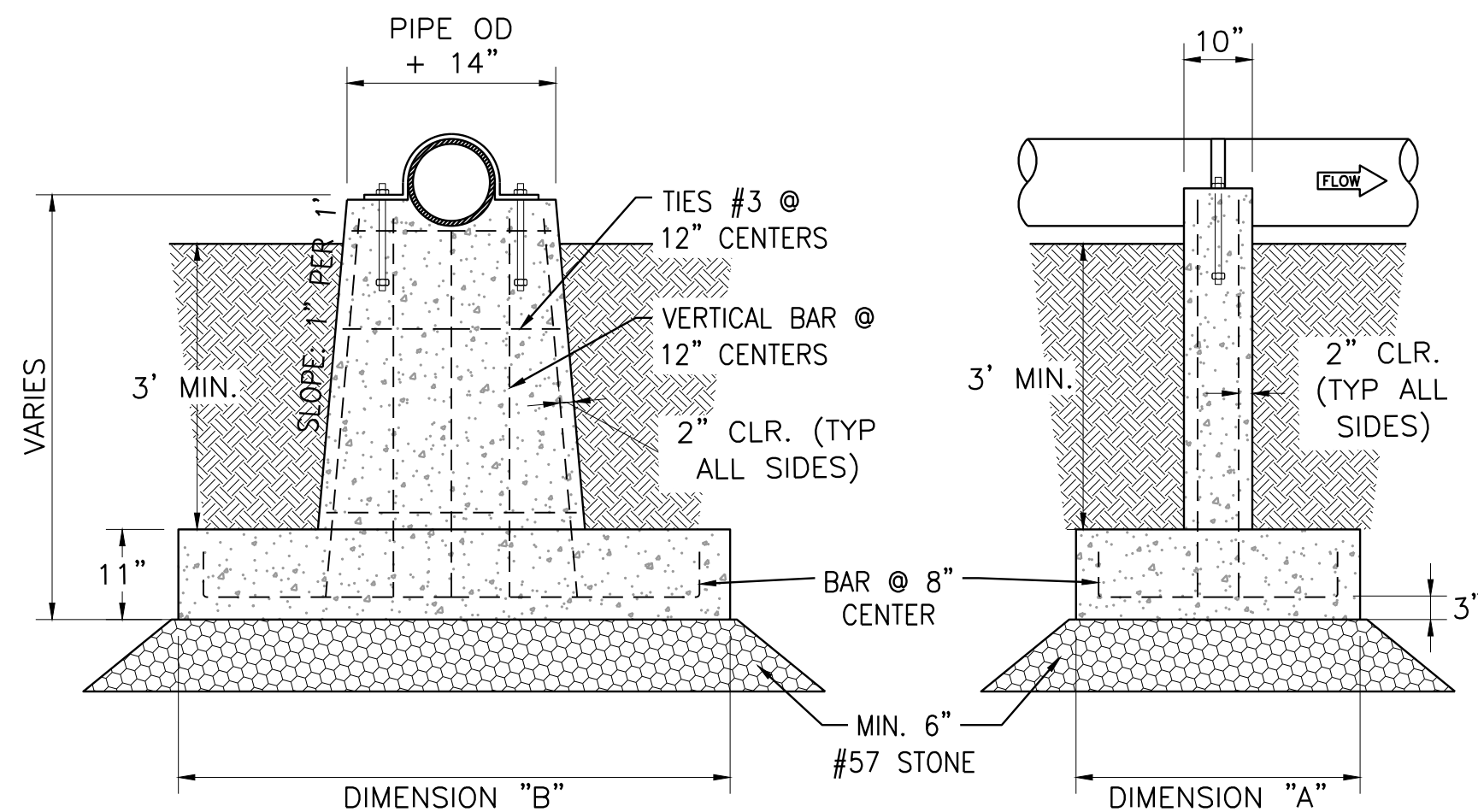
SECTION



ELEVATION

AERIAL PIPE CROSSING END SECTION

NOT TO SCALE

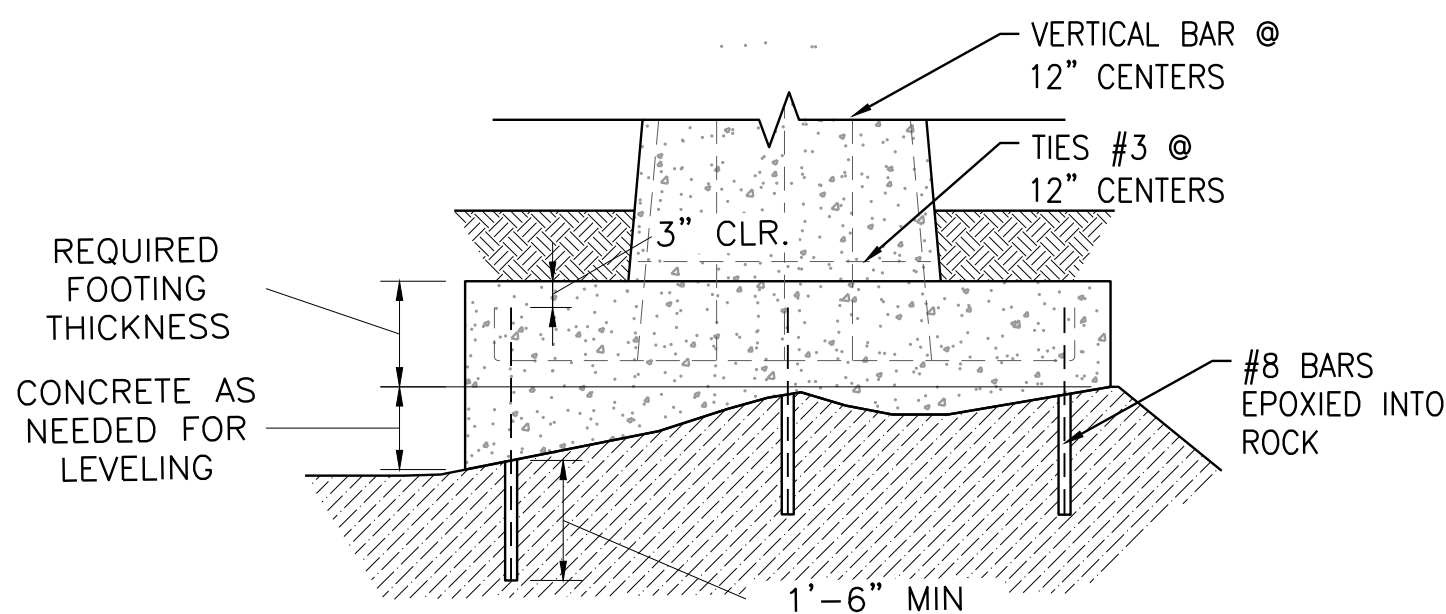
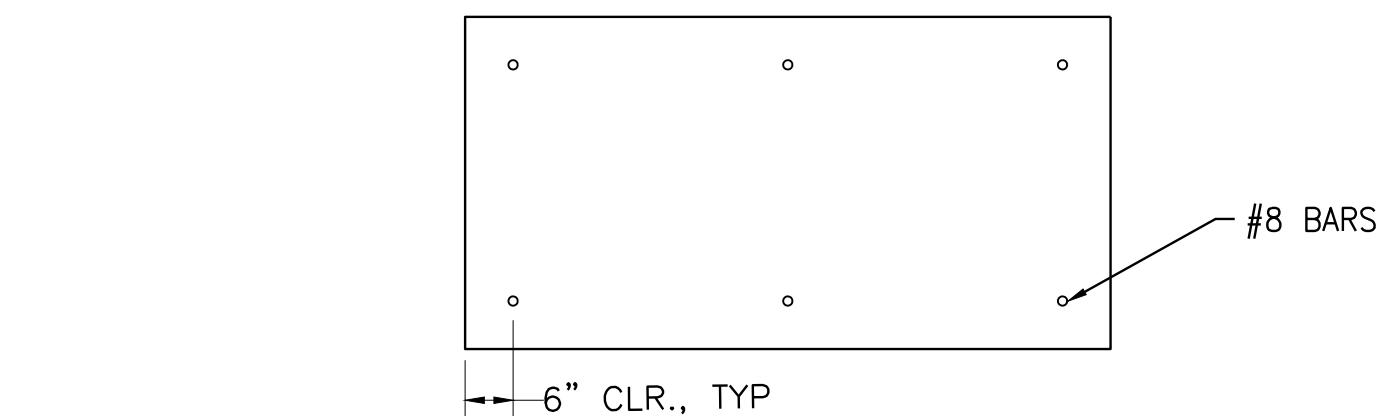


PIPE SIZE (IN.)	PIER HEIGHT (FT)	0-3	3-10	10-15	15-20	DIMENSION
8-10	2'-4"	3'-0"	4'-0"	5'-0"		A
	5'-6"	6'-0"	6'-6"	7'-0"		B
12-18	2'-4"	3'-0"	4'-0"	5'-0"		A
	6'-0"	6'-6"	7'-0"	7'-6"		B
20-24	2'-4"	3'-0"	4'-0"	5'-0"		A
	6'-6"	7'-0"	7'-6"	8'-0"		B

- NOTES:
1. REBAR BENDS NOT TO BE BENT BY HEAT.
 2. ALL CONCRETE TO BE AIR ENTRAINED CLASS "A".
 3. 1/8" TO 1/2" NEOPRENE PAD BETWEEN PIPE AND CONCRETE.
 4. ALL HARDWARE TO BE STAINLESS STEEL.
 5. FOUNDATION SOIL SHALL HAVE A MINIMUM SOIL BEARING PRESSURE OF 2,000 PSF.
 6. WHERE SHALLOW ROCK IS FOUND TO EXIST OMIT THE #57 STONE AND DO ONE OF THE FOLLOWING:
 - A. PIN FOOTING TO ROCK BY DRILLING AND EPOXYING DOWELS INTO THE ROCK, (RE: 4, THIS SHEET OR;
 - B. KEY INTO ROCK SURFACE A MINIMUM OF 12 INCHES.
 8. TOP OF FOOTING SHALL BE A MINIMUM OF 3' BELOW GRADE.

AERIAL PIPE CROSSING PIER DETAIL

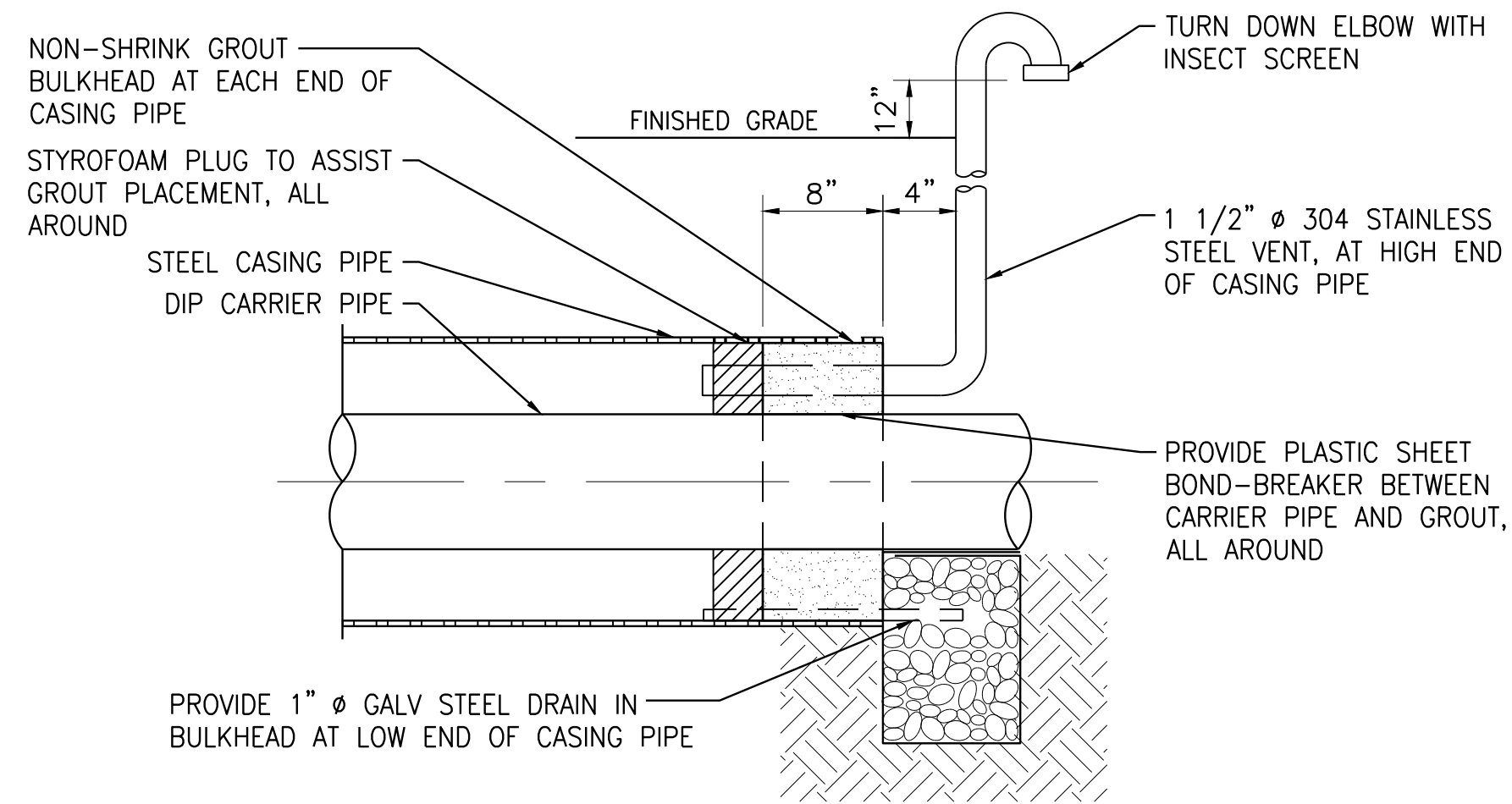
NOT TO SCALE



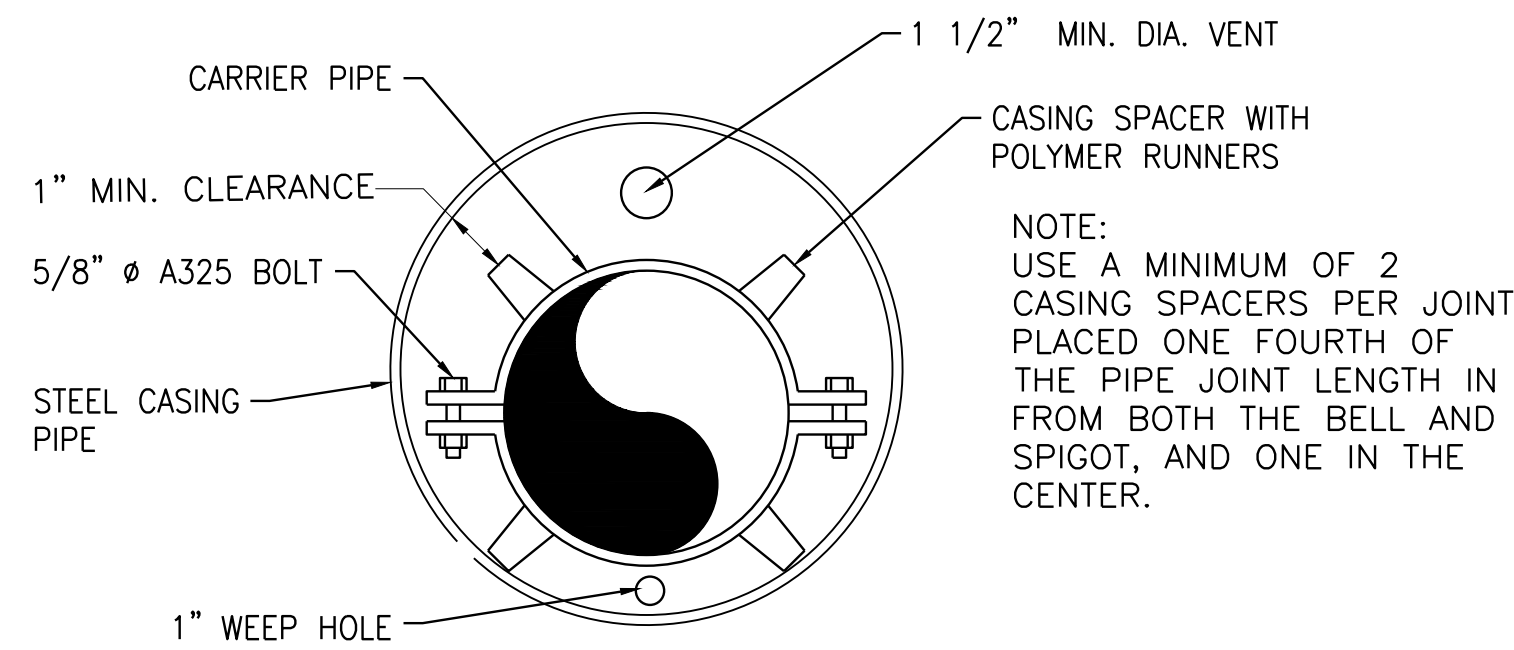
- NOTES:
1. EPOXY SHALL BE FROM HILTI OR SIKA CORP.
 2. CONTRACTOR TO COORDINATE WITH EPOXY MANUFACTURER TO DETERMINE DIAMETER OF THE DOWEL HOLE.
 3. DOWEL HOLE SHALL BE THOROUGHLY CLEANED TO ELIMINATE ANY ROCK DUST AND COMPLETELY FILLED WITH EPOXY. BOLT SHALL BE FULLY ENCAPSULATED IN EPOXY.
 4. SPACING AND PLACEMENT OF DOWELS SHALL BE AS SHOWN IN DETAIL ABOVE.

AERIAL PIER ROCK DOWEL DETAIL

NOT TO SCALE



TYPICAL CASING PIPE PLUG



PIPE ALIGNMENT GUIDE

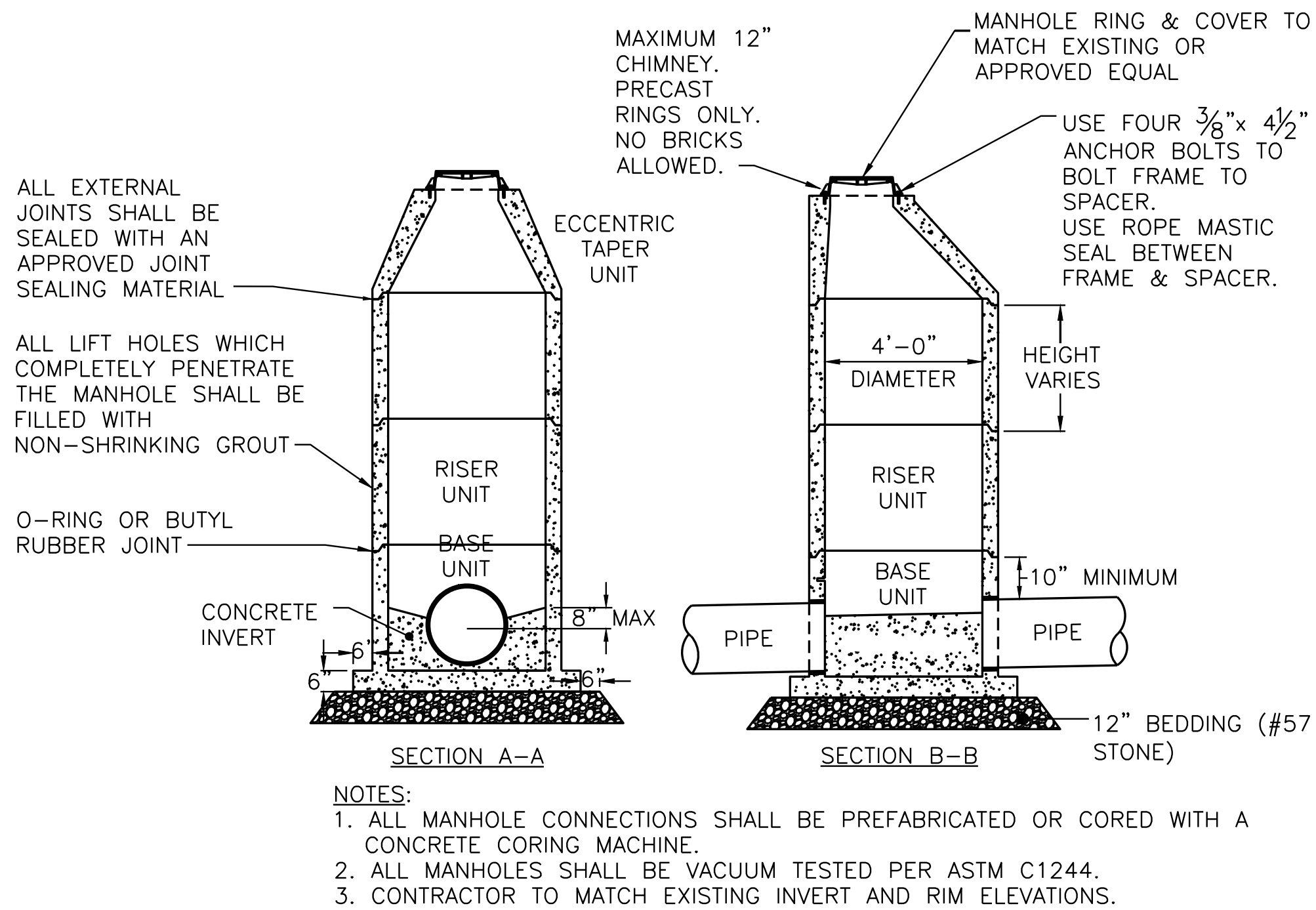
AERIAL PIPE CROSSING CASING SECTION AND DETAIL

NOT TO SCALE

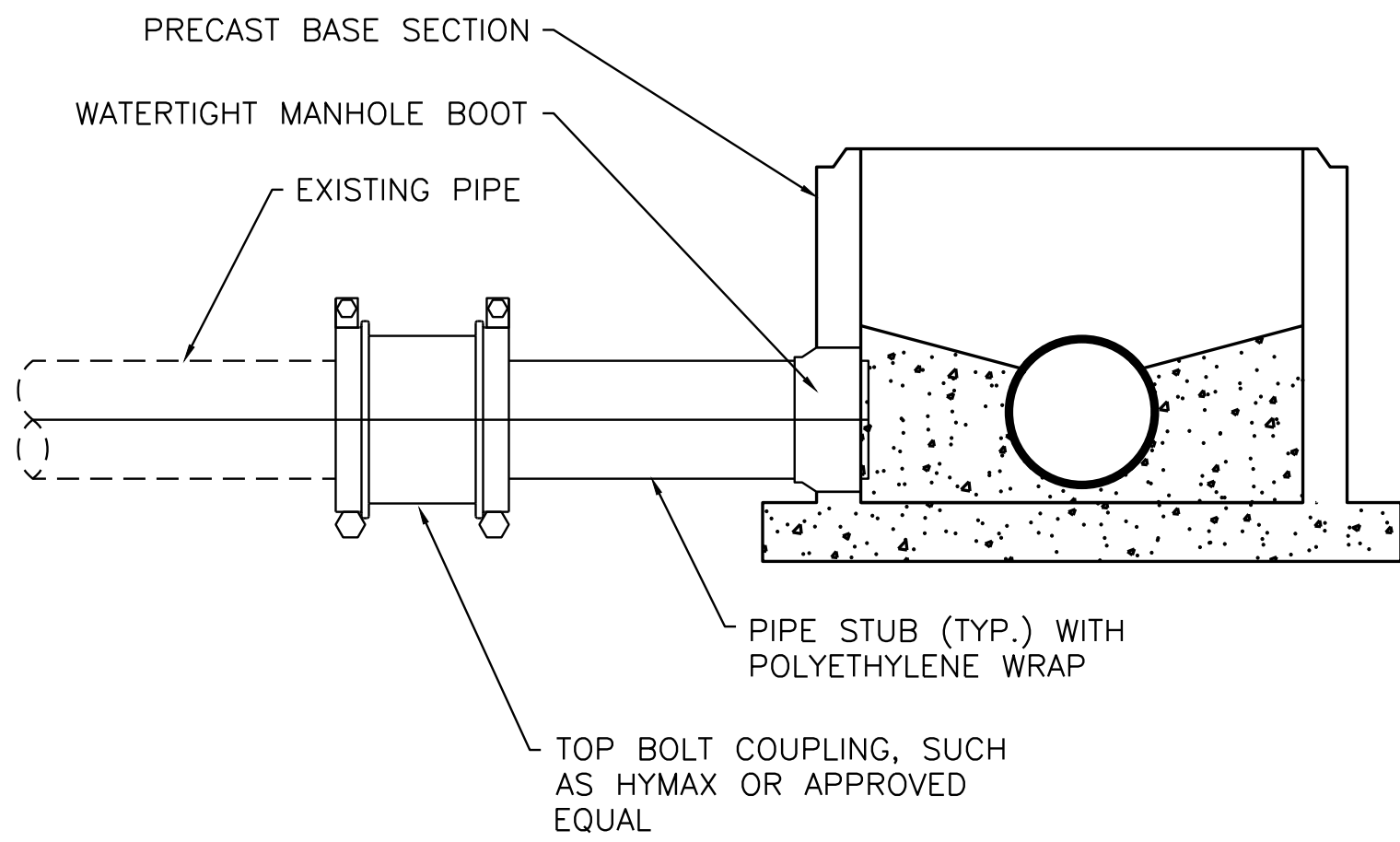
REV	DATE	BY	CHKD	APPD	DESCRIPTION
0	11/2/2021	WRH			ISSUE FOR BID
1					REVISED
2					REVISED
3					REVISED
4					REVISED
5					REVISED
6					REVISED
7					REVISED
8					REVISED
9					REVISED
10					REVISED
11					REVISED
12					REVISED
13					REVISED
14					REVISED
15					REVISED
16					REVISED
17					REVISED
18					REVISED
19					REVISED
20					REVISED

ACAD Rel: 24.0s (LMS Tech)
Filename: T:\2.0 STUDY\2.05 Scott Creek Aerial Sewer\DWG\Plan Sheets\CV-DTL1.dwg
Last Saved: 10/28/2021 10:56 AM - Saved By: 03826

Plot Date: 11/2/2021 3:08 PM Plot By: 03826 Filename: T:\2.0 STUDY\2.05 Scott Creek Aerial Sewer\DWG\Plan Sheets\CV-DTL1.dwg



7 STANDARD MANHOLE DETAIL
TYPICAL PLAN
NOT TO SCALE



8 CONNECTION TO EXISTING
PIPE AT NEW MANHOLE
NOT TO SCALE

Freeze and Nichols, Inc.
Georgia Registered Engineering Firm REF-004433

11/02/2021

FREEZE & NICHOLS
360 Interstate North Parkway,
Suite 250
Atlanta, GA 30339
Phone - (404) 334-4310
Web - www.freeze.com

CITY OF CLAYTON

SCOTT CREEK AERIAL SEWER REPLACEMENT

CIVIL

AERIAL SEWER CROSSING DETAILS

NO.	ISSUE	BY	DATE	REVISED NO.	DATE	DESIGNED	DRAWN	CHECKED	FILE NAME
0	ISSUE FOR BID	WRH	11/2/2021	CYG20163	NOV 2021	KKP	KKP	WRH	CV-DTL1.dwg
Bar is one inch on original drawing, if not one inch on this sheet, adjust scale.									

VERIFY SCALE

1" = 1'

SHEET

DT-2

ISSUED FOR BID

SEQ.